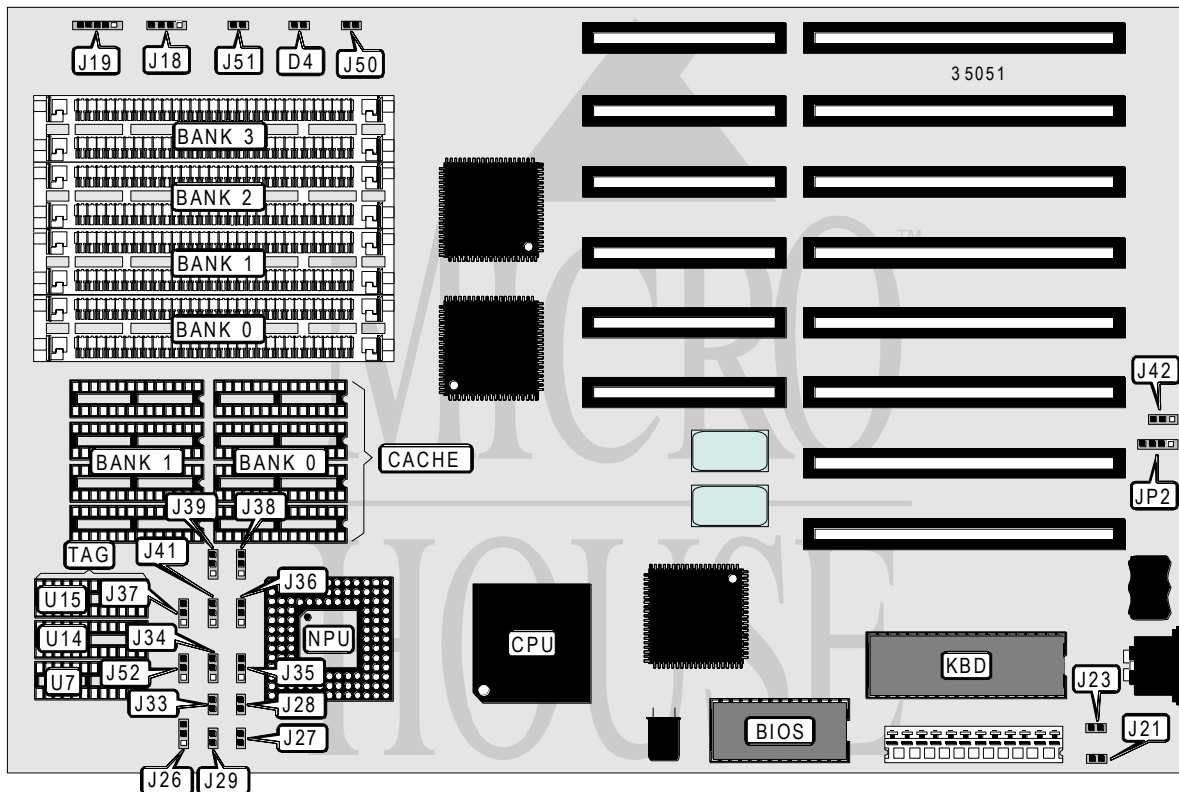


# ABIT COMPUTER CORPORATION

## FU325/FU333/FU340

<b>Processor</b>	80386DX
<b>Processor Speed</b>	25/33/40MHz
<b>Chip Set</b>	C & T/Peak DM
<b>Max. Onboard DRAM</b>	32MB
<b>Cache</b>	32/64/128/256KB
<b>BIOS</b>	AMI/C & T
<b>Dimensions</b>	330mm x 218mm
<b>I/O Options</b>	None
<b>NPU Options</b>	80387/3167



CONNECTIONS			
Purpose	Location	Purpose	Location
Turbo LED	D4	Turbo switch	J50
Speaker	J18	Reset switch	J51
Power LED & keylock	J19	External battery	JP2

Continued on next page . . .

# ABIT COMPUTER CORPORATION

## FU325/FU333/FU340

... continued from previous page

USER CONFIGURABLE SETTINGS		
Function	Jumper	Position
í Factory configured - do not alter	J21	Open
í Monitor type select monochrome	J23	Open
Monitor type select color	J23	Closed
í CMOS memory normal operation	J42	pins 2 & 3 closed
CMOS memory clear	J42	pins 1 & 2 closed

DRAM CONFIGURATION		
Size	Bank 0	Bank 1
1MB	(4) 256K x 9	NONE
2MB	(4) 256K x 9	(4) 256K x 9
4MB	(4) 1M x 9	NONE
8MB	(4) 1M x 9	(4) 1M x 9
16MB	(4) 4M x 9	NONE
32MB	(4) 4M x 9	(4) 4M x 9

CACHE CONFIGURATION				
Size	Cache	Location	TAG (U7)	TAG (U14 & U15)
32KB	(4) 8K x 8	NONE	(1) 8K x 8	NONE
64KB	(4) 8K x 8	(4) 8K x 8	NONE	(2) 16K x 4
128KB	(4) 32K x 8	NONE	(1) 32K x 8	NONE
256KB	(4) 32K x 8	(4) 32K x 8	NONE	(2) 64K x 4

CACHE JUMPER CONFIGURATION						
Size	J26	J27	J28	J29	J33	J34
32KB	1 & 2	Open	Open	Closed	Closed	Open
64KB	1 & 2	Closed	Open	Closed	Closed	1 & 2
128KB	2 & 3	Closed	Open	Closed	Open	1 & 2
256KB	2 & 3	Closed	Closed	Open	Open	1 & 2

Note: Pins designated should be in the closed position.

CACHE JUMPER CONFIGURATION (CON'T)							
Size	J35	J36	J37	J38	J39	J41	J52
32KB	2 & 3	2 & 3	2 & 3	Open	2 & 3	Open	1 & 2
64KB	Open	2 & 3	2 & 3	1 & 2	1 & 2	Open	1 & 2
128KB	Open	1 & 2	1 & 2	2 & 3	2 & 3	1 & 2	2 & 3
256KB	1 & 2	1 & 2	1 & 2	2 & 3	1 & 2	1 & 2	2 & 3

Note: Pins designated should be in the closed position.