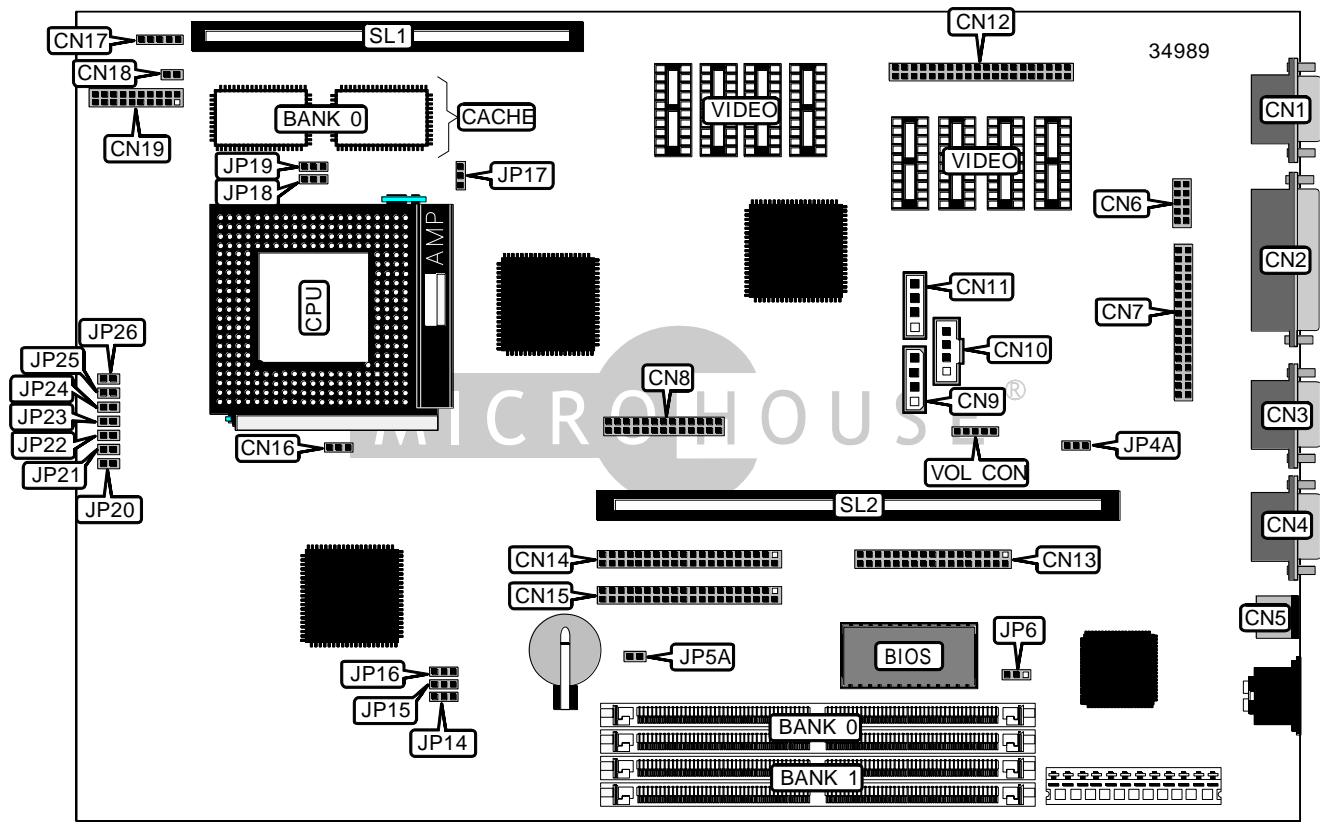


# ASUS COMPUTER INTERNATIONAL

## P/I-AP55TV (Rev. 1.2)

<b>Processor</b>	CX M1/AM K5/Pentium
<b>Processor Speed</b>	75/90/100/120/133/150/166/200MHz
<b>Chip Set</b>	Intel
<b>Video Chip Set</b>	ATI
<b>Maximum Onboard Memory</b>	128MB (EDO supported)
<b>Maximum Video Memory</b>	4MB
<b>Cache</b>	256/512KB
<b>BIOS</b>	Unidentified
<b>Dimensions</b>	330mm x 218mm
<b>I/O Options</b>	CD-ROM interfaces (3), floppy drive interface, green PC connector, IDE interfaces (2), parallel port, PS/2 mouse port, serial ports (2), VGA port, riser slot, cache slot, IR connector, USB connector, audio connector, wavetable connector, AMC connector software power on switch, software power on connector
<b>NPU Options</b>	None



Continued on next page. . .

ASUS COMPUTER INTERNATIONAL  
P/I-AP55TV (Rev. 1.2)

... continued from previous page

CONNECTIONS			
Purpose	Location	Purpose	Location
VGA port	CN1	IDE interface 1	CN14
Parallel port	CN2	IDE interface 2	CN15
Serial port 2	CN3	Chassis fan power	CN16
Serial port 1	CN4	IR connector	CN17
PS/2 mouse port	CN5	IDE interface LED	CN18
USB connector	CN6	Power LED & keylock	CN19 pins 1 - 5
Audio connector	CN7	Speaker	CN19 pins 7 - 10
Wavetable connector	CN8	Power LED	CN19 pins 12 & 13
Panasonic CD audio in	CN9	Green PC connector	CN19 pins 14 & 15
Sony CD audio in	CN10	Reset switch	CN19 pins 19 & 20
Mistumi CD audio in	CN11	Cache slot	SL1
AMC connector	CN12	Riser slot	SL2
Floppy drive interface	CN13	Volume control	VOL CON

USER CONFIGURABLE SETTINGS		
Function	Label	Position
í Onboard audio enabled	JP4A	Pins 1 & 2 closed
Onboard audio disabled	JP4A	Pins 2 & 3 closed
í CMOS memory normal operation	JP5A	Closed
CMOS memory clear	JP5A	Open
í Flash BIOS write protect disabled	JP6	Pins 1 & 2 closed
Flash BIOS write protect enabled	JP6	Pins 2 & 3 closed

DRAM CONFIGURATION		
Size	Bank 0	Bank 1
8MB	(2) 1M x 36	None
16MB	(2) 2M x 36	None
16MB	(2) 1M x 36	(2) 1M x 36
24MB	(2) 2M x 36	(2) 1M x 36
32MB	(2) 4M x 36	None
32MB	(2) 2M x 36	(2) 2M x 36
40MB	(2) 4M x 36	(2) 1M x 36
48MB	(2) 4M x 36	(2) 2M x 36
64MB	(2) 8M x 36	None
64MB	(2) 4M x 36	(2) 4M x 36
72MB	(2) 8M x 36	(2) 1M x 36
80MB	(2) 8M x 36	(2) 2M x 36
96MB	(2) 8M x 36	(2) 4M x 36
128MB	(2) 8M x 36	(2) 8M x 36

Note: Board accepts EDO memory. Banks are interchangeable.

Continued on next page. ...

# ASUS COMPUTER INTERNATIONAL

## P/I-AP55TV (Rev. 1.2)

... continued from previous page

CACHE CONFIGURATION			
Size	Bank 0	Bank 1	TAG
256KB (A)	None	256KB module installed	Unidentified
256KB (B)	(2) 32K x 32	Not installed	Unidentified
512KB (A)	(2) 32K x 32	256KB module installed	Unidentified
512KB (B)	None	512KB module installed	Unidentified
512KB (C)	(2) 64K x 32	Not installed	Unidentified

CACHE JUMPER CONFIGURATION	
Size	JP17
256KB (A)	Pins 2 & 3 closed
256KB (B)	Pins 2 & 3 closed
512KB (A)	Pins 1 & 2 closed
512KB (B)	Pins 1 & 2 closed
512KB (C)	Pins 1 & 2 closed

VIDEO MEMORY CONFIGURATION				
Size	Bank 0	Bank 1	Bank 2	Bank 3
1MB	(2) 256K x 16	None	None	None
2MB	(2) 256K x 16	(2) 256K x 16	None	None
3MB	(2) 256K x 16	(2) 256K x 16	(2) 256K x 16	None
4MB	(2) 256K x 16	(2) 256K x 16	(2) 256K x 16	(2) 256K x 16

Note: The location of banks 1, 2 & 3 are unidentified.

CPU SPEED SELECTION (CYRIX)							
CPU speed	Clock speed	Multiplier	JP14	JP15	JP16	JP18	JP19
166MHz	66MHz	2x	1 & 2	2 & 3	2 & 3	1 & 2	2 & 3

Note: Pins designated should be in the closed position.

CPU SPEED SELECTION (AMD)							
CPU speed	Clock speed	Multiplier	JP14	JP15	JP16	JP18	JP19
75MHz	50MHz	1.5x	2 & 3	2 & 3	2 & 3	1 & 2	1 & 2
90MHz	60MHz	1.5x	2 & 3	2 & 3	1 & 2	1 & 2	1 & 2
100MHz	66MHz	1.5x	1 & 2	2 & 3	2 & 3	1 & 2	1 & 2

Note: Pins designated should be in the closed position.

Continued on next page. . .

ASUS COMPUTER INTERNATIONAL  
P/I-AP55TV (Rev. 1.2)

... continued from previous page

CPU SPEED SELECTION (INTEL)							
CPU speed	Clock speed	Multiplier	JP14	JP15	JP16	JP18	JP19
75MHz	50MHz	1.5x	2 & 3	2 & 3	2 & 3	1 & 2	1 & 2
90MHz	60MHz	1.5x	2 & 3	2 & 3	1 & 2	1 & 2	1 & 2
100MHz	66MHz	1.5x	1 & 2	2 & 3	2 & 3	1 & 2	1 & 2
120MHz	60MHz	2x	2 & 3	2 & 3	1 & 2	1 & 2	2 & 3
133MHz	66MHz	2x	1 & 2	2 & 3	2 & 3	1 & 2	2 & 3
150MHz	60MHz	2.5x	2 & 3	2 & 3	1 & 2	2 & 3	2 & 3
166MHz	66MHz	2.5x	1 & 2	2 & 3	2 & 3	2 & 3	2 & 3
200MHz	66MHz	3x	1 & 2	2 & 3	2 & 3	2 & 3	1 & 2

Note: Pins designated should be in the closed position.

CPU VOLTAGE SELECTION (SINGLE)		
Voltage	JP20	JP21
í 3.38v (STD)	Closed	Open
3.5v (VRE)	Open	Closed

CPU VOLTAGE SELECTION (DUAL)					
Voltage	JP22	JP23	JP24	JP25	JP26
2.5v	Open	Open	Open	Closed	Open
2.7v	Open	Closed	Open	Open	Open
í 2.8v	Closed	Open	Open	Open	Open
2.9v	Open	Open	Closed	Open	Open
Reserved	Open	Open	Open	Open	Closed