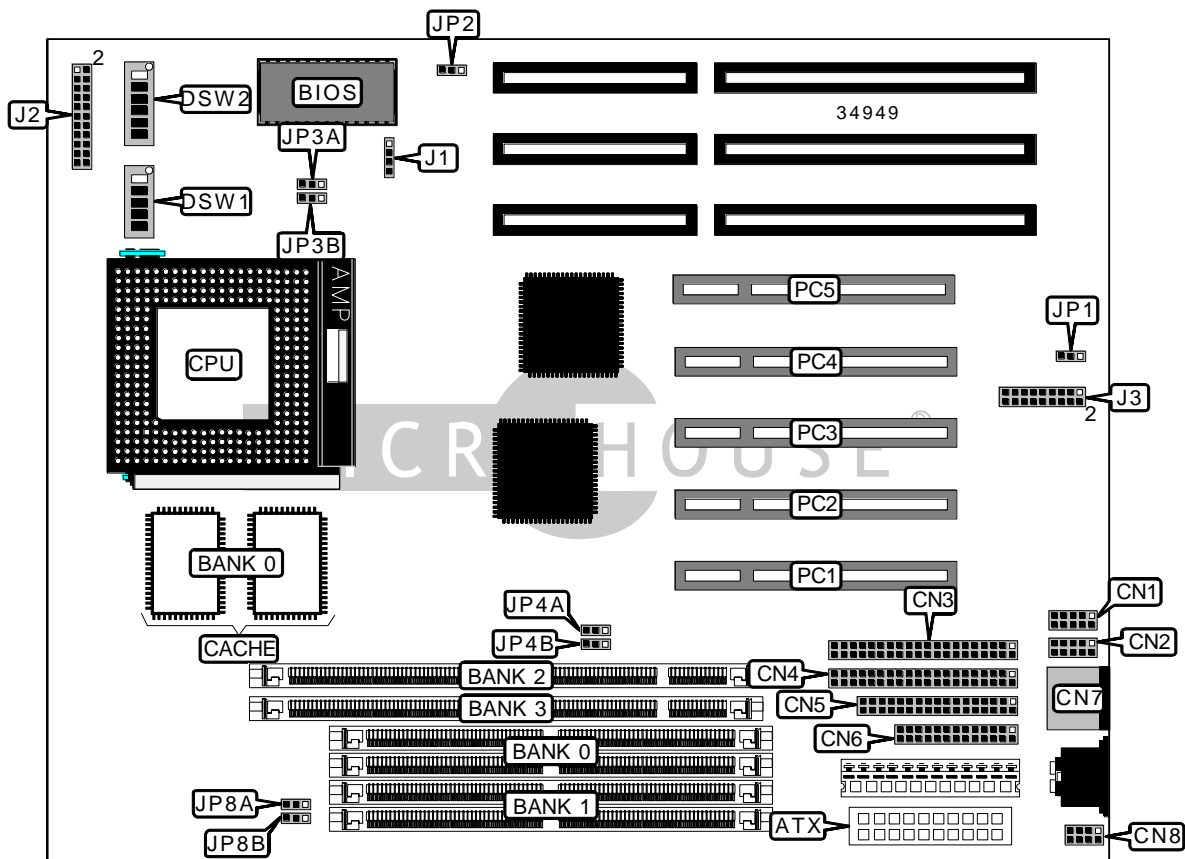


# AMPTRON INTERNATIONAL, INC.

## PM-9600

<b>Device Type</b>	Mainboard
<b>Processor</b>	CX 6X86/IBM 6X86/CX 6X86L/IBM 6X86L/CX 686MX/IBM 6X86MX/ CX M1/IDT C6/AM K5/AM K6/Pentium
<b>Processor Speed</b>	75/90/100/120/133/150/166/180/200/233MHz
<b>Chip Set</b>	TX Two
<b>Video Chip Set</b>	None
<b>Maximum Onboard Memory</b>	512MB (EDO & SDRAM supported)
<b>Maximum Video Memory</b>	None
<b>Cache</b>	1024KB
<b>BIOS</b>	AMI
<b>Dimensions</b>	254mm x 218mm
<b>I/O Options</b>	32-bit PCI slots (5), floppy drive interface, green PC connector, IDE interfaces (2), parallel port, PS/2 mouse port, PS/2 mouse interface, serial ports (2), ATX power connector
<b>NPU Options</b>	None



Continued on next page. . .

AMPTRON INTERNATIONAL, INC.  
 P M - 9 6 0 0

... continued from previous page

CONNECTIONS			
Purpose	Location	Purpose	Location
ATX power connector	ATX	Speaker	J2/pins 1/3/5/7
Serial port 1	CN1	Power LED & keylock	J2/pins 2/4/6/8/10
Serial port 2	CN2	Turbo LED	J2/pins 13 & 14
IDE interface 2	CN3	IDE interface LED	J2/pins 15 & 16
IDE interface 1	CN4	Reset switch	J2/pins 17 & 18
Floppy drive interface	CN5	Green PC LED	J2/pins 19 & 20
Parallel port	CN6	Green PC connector	J2/pins 21 & 22
PS/2 mouse port	CN7	ATX form connector	J3
PS/2 mouse interface	CN8	32-bit PCI slots	PC1 – PC5
Chassis fan power	J1		

USER CONFIGURABLE SETTINGS		
Function	Label	Position
í CMOS memory normal operation	JP1	Pins 2 & 3 closed
CMOS memory clear	JP1	Pins 1 & 2 closed
Flash BIOS voltage select 12v	JP2	Pins 1 & 2 closed
Flash BIOS voltage select 5v	JP2	Pins 2 & 3 closed

SIMM CONFIGURATION		
Size	Bank 0	Bank 1
8MB	(2) 1M x 36	None
16MB	(2) 2M x 36	None
16MB	(2) 1M x 36	(2) 1M x 36
24MB	(2) 2M x 36	(2) 1M x 36
32MB	(2) 4M x 36	None
32MB	(2) 2M x 36	(2) 2M x 36
40MB	(2) 4M x 36	(2) 1M x 36
48MB	(2) 4M x 36	(2) 2M x 36
64MB	(2) 8M x 36	None
64MB	(2) 4M x 36	(2) 4M x 36
72MB	(2) 8M x 36	(2) 1M x 36
80MB	(2) 8M x 36	(2) 2M x 36
96MB	(2) 8M x 36	(2) 4M x 36
128MB	(2) 8M x 36	(2) 8M x 36

Continued on next page. . .

AMPTRON INTERNATIONAL, INC.  
 P M - 9 6 0 0

... continued from previous page

SIMM CONFIGURATION (CON'T)		
Size	Bank 0	Bank 1
128MB	(2) 16M x 36	None
136MB	(2) 16M x 36	(2) 1M x 36
144MB	(2) 16M x 36	(2) 2M x 36
160MB	(2) 16M x 36	(2) 4M x 36
192MB	(2) 16M x 36	(2) 8M x 36
256MB	(2) 16M x 36	(2) 16M x 36
256MB	(2) 32M x 36	None
264MB	(2) 32M x 36	(2) 1M x 36
272MB	(2) 32M x 36	(2) 2M x 36
288MB	(2) 32M x 36	(2) 4M x 36
320MB	(2) 32M x 36	(2) 8M x 36
384MB	(2) 32M x 36	(2) 16M x 36
512MB	(2) 32M x 36	(2) 32M x 36

Note: Board accepts EDO memory.

DIMM CONFIGURATION		
Size	Bank 2	Bank 3
8MB	(1) 1M x 64	None
16MB	(1) 2M x 64	None
16MB	(1) 1M x 64	(1) 1M x 64
24MB	(1) 2M x 64	(1) 1M x 64
32MB	(1) 4M x 64	None
32MB	(1) 2M x 64	(1) 2M x 64
40MB	(1) 4M x 64	(1) 1M x 64
48MB	(1) 4M x 64	(1) 2M x 64
64MB	(1) 8M x 64	None
64MB	(1) 4M x 64	(1) 4M x 64
72MB	(1) 8M x 64	(1) 1M x 64
80MB	(1) 8M x 64	(1) 2M x 64
96MB	(1) 8M x 64	(1) 4M x 64
128MB	(1) 16M x 64	None
128MB	(1) 8M x 64	(1) 8M x 64
136MB	(1) 16M x 64	(1) 1M x 64
144MB	(1) 16M x 64	(1) 2M x 64

Continued on next page...

AMPTRON INTERNATIONAL, INC.  
 P M - 9 6 0 0

... continued from previous page

DIMM CONFIGURATION (CON'T)		
Size	Bank 2	Bank 3
160MB	(1) 16M x 64	(1) 4M x 64
192MB	(1) 16M x 64	(1) 8M x 64
256MB	(1) 16M x 64	(1) 16M x 64
256MB	(1) 32M x 64	None
264MB	(1) 32M x 64	(1) 1M x 64
272MB	(1) 32M x 64	(1) 2M x 64
288MB	(1) 32M x 64	(1) 4M x 64
320MB	(1) 32M x 64	(1) 8M x 64
384MB	(1) 32M x 64	(1) 16M x 64
512MB	(1) 32M x 64	(1) 32M x 64

Note: Board accepts SDRAM memory.

DIMM/SIMM JUMPER CONFIGURATION		
Setting	JP8A	JP8B
3 banks used	Pins 1 & 2 closed	Pins 1 & 2 closed
4 banks used	Pins 2 & 3 closed	Pins 2 & 3 closed

DIMM VOLTAGE CONFIGURATION		
Voltage	JP4A	JP4B
3.3v	Pins 2 & 3 closed	Pins 2 & 3 closed
5v	Pins 1 & 2 closed	Pins 1 & 2 closed

CACHE CONFIGURATION	
Size	Bank 0
1MB	(2) 128K x 32

CPU SPEED SELECTION (CX 6X86)							
CPU speed	Clock speed	Multiplier	DSW1/1	DSW1/2	DSW1/3	DSW1/4	DSW1/5
150MHz	60MHz	2x	On	Off	N/A	On	On
166MHz	66MHz	2x	On	Off	N/A	Off	On

CPU SPEED SELECTION (IBM 6X86)							
CPU speed	Clock speed	Multiplier	DSW1/1	DSW1/2	DSW1/3	DSW1/4	DSW1/5
150MHz	60MHz	2x	On	Off	N/A	On	On
166MHz	66MHz	2x	On	Off	N/A	Off	On

Continued on next page...

AMPTRON INTERNATIONAL, INC.  
P M - 9 6 0 0

... continued from previous page

CPU SPEED SELECTION (CX 6X86L)							
CPU speed	Clock speed	Multiplier	DSW1/1	DSW1/2	DSW1/3	DSW1/4	DSW1/5
166MHz	66MHz	2x	On	Off	N/A	Off	On

CPU SPEED SELECTION (IBM 6X86L)							
CPU speed	Clock speed	Multiplier	DSW1/1	DSW1/2	DSW1/3	DSW1/4	DSW1/5
166MHz	66MHz	2x	On	Off	N/A	Off	On

CPU SPEED SELECTION (CX 6X86MX)							
CPU speed	Clock speed	Multiplier	DSW1/1	DSW1/2	DSW1/3	DSW1/4	DSW1/5
166MHz	66MHz	2x	On	Off	N/A	Off	On

CPU SPEED SELECTION (IBM 6X86MX)							
CPU speed	Clock speed	Multiplier	DSW1/1	DSW1/2	DSW1/3	DSW1/4	DSW1/5
166MHz	66MHz	2x	On	Off	N/A	Off	On

CPU SPEED SELECTION (IDT C6)							
CPU speed	Clock speed	Multiplier	DSW1/1	DSW1/2	DSW1/3	DSW1/4	DSW1/5
200MHz	66MHz	3x	Off	On	N/A	Off	On

CPU SPEED SELECTION (AM K5)							
CPU speed	Clock speed	Multiplier	DSW1/1	DSW1/2	DSW1/3	DSW1/4	DSW1/5
100MHz	66MHz	1.5x	Off	Off	N/A	Off	On
120MHz	60MHz	1.5x	Off	Off	N/A	On	On
133MHz	66MHz	1.5x	Off	Off	N/A	Off	On
150MHz	60MHz	2.5x	On	On	N/A	On	On
166MHz	66MHz	2.5x	On	On	N/A	Off	On

CPU SPEED SELECTION (AM K6)							
CPU speed	Clock speed	Multiplier	DSW1/1	DSW1/2	DSW1/3	DSW1/4	DSW1/5
166MHz	66MHz	2.5x	On	On	N/A	Off	On
200MHz	66MHz	3x	Off	On	N/A	Off	On
233MHz	66MHz	3.5x	Off	Off	Off	Off	On

Continued on next page...

AMPTRON INTERNATIONAL, INC.  
P M - 9 6 0 0

... continued from previous page

CPU SPEED SELECTION (INTEL)							
CPU speed	Clock speed	Multiplier	DSW1/1	DSW1/2	DSW1/3	DSW1/4	DSW1/5
90MHz	60MHz	1.5x	Off	Off	N/A	On	On
100MHz	66MHz	1.5x	Off	Off	N/A	Off	On
120MHz	60MHz	2x	On	Off	N/A	On	On
133MHz	66MHz	2x	On	Off	N/A	Off	On
150MHz	60MHz	2.5x	On	On	N/A	On	On
166MHz	66MHz	2.5x	On	On	N/A	Off	On
180MHz	60MHz	3x	Off	On	N/A	On	On
200MHz	66MHz	3x	Off	On	N/A	Off	On

CPU SPEED SELECTION (INTEL MMX)							
CPU speed	Clock speed	Multiplier	DSW1/1	DSW1/2	DSW1/3	DSW1/4	DSW1/5
166MHz	66MHz	2.5x	On	On	N/A	Off	On
200MHz	66MHz	3x	Off	On	N/A	Off	On
233MHz	66MHz	3.5x	Off	Off	Off	Off	On

CPU TYPE SELECTION		
Type	JP3A	JP3B
Single voltage	Pins 2 & 3 closed	Pins 2 & 3 closed
Dual voltage	Pins 1 & 2 closed	Pins 1 & 2 closed

CPU VOLTAGE SELECTION						
Voltage	DSW2/1	DSW2/2	DSW2/3	DSW2/4	DSW2/5	DSW2/6
2.2v	Off	Off	Off	Off	Off	Off
2.5v	Off	Off	Off	Off	Off	On
2.8v	Off	Off	Off	Off	On	On
2.9v	Off	Off	Off	On	Off	On
3.2v	Off	Off	On	Off	Off	On
3.3v	Off	On	Off	Off	Off	On
3.5v	On	Off	Off	Off	Off	On