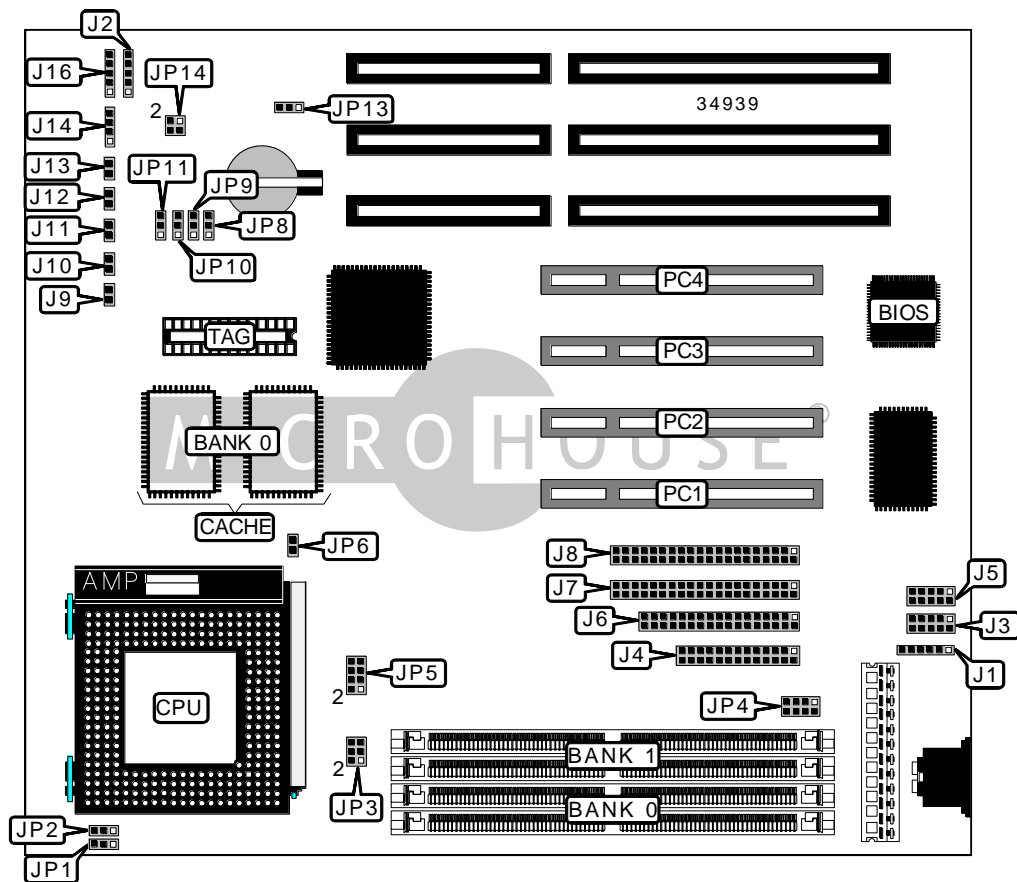


# DIAMOND FLOWER, INC. 586STE (REV. A+)

<b>Device Type</b>	Mainboard
<b>Processor</b>	CX 6X86/IBM 6X86/CX 6X86L/IBM 6X86L/AM K5/Pentium
<b>Processor Speed</b>	75/90/100/120/133/150/166/200MHz
<b>Chip Set</b>	SIS
<b>Video Chip Set</b>	None
<b>Maximum Onboard Memory</b>	256MB (EDO supported)
<b>Maximum Video Memory</b>	None
<b>Cache</b>	256/512KB
<b>BIOS</b>	Award
<b>Dimensions</b>	220mm x 220mm
<b>I/O Options</b>	32-bit PCI slots (4), floppy drive interface, green PC connector, IDE interfaces (2), parallel port, PS/2 mouse interface, serial ports (2)
<b>NPU Options</b>	None



*Continued on next page . . .*

DIAMOND FLOWER, INC.  
586STE (REV. A+)

... continued from previous page

CONNECTIONS			
Purpose	Location	Purpose	Location
PS/2 mouse interface	J1	Turbo LED	J9
IR connector	J2	IDE interface LED	J10
Serial port 2	J3	Green PC LED	J11
Parallel port	J4	Green PC connector	J12
Serial port 1	J5	Reset switch	J13
Floppy drive interface	J6	Speaker	J14
IDE interface 2	J7	Power LED & keylock	J16
IDE interface 1	J8	32-bit PCI slots	PC1 – PC4

USER CONFIGURABLE SETTINGS		
Function	Label	Position
í CMOS memory normal operation	JP13	Pins 1 & 2 closed
CMOS memory clear	JP13	Pins 2 & 3 closed

SIMM CONFIGURATION		
Size	Bank 0	Bank 1
8MB	(2) 1M x 36	None
16MB	(2) 2M x 36	None
16MB	(2) 1M x 36	(2) 1M x 36
24MB	(2) 2M x 36	(2) 1M x 36
32MB	(2) 4M x 36	None
32MB	(2) 2M x 36	(2) 2M x 36
40MB	(2) 4M x 36	(2) 1M x 36
48MB	(2) 4M x 36	(2) 2M x 36
64MB	(2) 8M x 36	None
64MB	(2) 4M x 36	(2) 4M x 36
72MB	(2) 8M x 36	(2) 1M x 36
80MB	(2) 8M x 36	(2) 2M x 36
96MB	(2) 8M x 36	(2) 4M x 36
128MB	(2) 8M x 36	(2) 8M x 36
128MB	(2) 16M x 36	None
136MB	(2) 16M x 36	(2) 1M x 36

Continued on next page...

DIAMOND FLOWER, INC.  
586STE (REV. A+)

... continued from previous page

SIMM CONFIGURATION (CON'T)		
Size	Bank 0	Bank 1
144MB	(2) 16M x 36	(2) 2M x 36
160MB	(2) 16M x 36	(2) 4M x 36
192MB	(2) 16M x 36	(2) 8M x 36
256MB	(2) 16M x 36	(2) 16M x 36
Note: Board accepts EDO memory.		

CACHE CONFIGURATION		
Size	Bank 0	TAG
256KB	(2) 32K x 32	Unidentified
512KB	(2) 64K x 32	Unidentified

CPU SPEED SELECTION (CX 6X86)						
CPU speed	Clock speed	Multiplier	JP1	JP2	JP4	JP8
120MHz	50MHz	2x	1 & 2	2 & 3	3 & 4, 7 & 8	1 & 2
133MHz	55MHz	2x	1 & 2	2 & 3	1 & 2	1 & 2
150MHz	60MHz	2x	1 & 2	2 & 3	3 & 4, 5 & 6	1 & 2
166MHz	66MHz	2x	1 & 2	2 & 3	5 & 6	1 & 2
200MHz	75MHz	2x	1 & 2	2 & 3	3 & 4	2 & 3
Note: Pins designated should be in the closed position.						

CPU SPEED SELECTION (CX 6X86, CON'T)					
CPU speed	Clock speed	Multiplier	JP9	JP10	JP11
120MHz	50MHz	2x	2 & 3	2 & 3	2 & 3
133MHz	55MHz	2x	2 & 3	2 & 3	1 & 2
150MHz	60MHz	2x	1 & 2	2 & 3	2 & 3
166MHz	66MHz	2x	2 & 3	1 & 2	2 & 3
200MHz	75MHz	2x	1 & 2	2 & 3	1 & 2
Note: Pins designated should be in the closed position.					

Continued on next page. . .

DIAMOND FLOWER, INC.  
586STE (REV. A+)

... continued from previous page

CPU SPEED SELECTION (IBM 6X86)						
CPU speed	Clock speed	Multiplier	JP1	JP2	JP4	JP8
120MHz	50MHz	2x	1 & 2	2 & 3	3 & 4, 7 & 8	1 & 2
133MHz	55MHz	2x	1 & 2	2 & 3	1 & 2	1 & 2
150MHz	60MHz	2x	1 & 2	2 & 3	3 & 4, 5 & 6	1 & 2
166MHz	66MHz	2x	1 & 2	2 & 3	5 & 6	1 & 2
200MHz	75MHz	2x	1 & 2	2 & 3	3 & 4	2 & 3

Note: Pins designated should be in the closed position.

CPU SPEED SELECTION (IBM 6X86, CON'T)					
CPU speed	Clock speed	Multiplier	JP9	JP10	JP11
120MHz	50MHz	2x	2 & 3	2 & 3	2 & 3
133MHz	55MHz	2x	2 & 3	2 & 3	1 & 2
150MHz	60MHz	2x	1 & 2	2 & 3	2 & 3
166MHz	66MHz	2x	2 & 3	1 & 2	2 & 3
200MHz	75MHz	2x	1 & 2	2 & 3	1 & 2

Note: Pins designated should be in the closed position.

CPU SPEED SELECTION (CX 6X86L)						
CPU speed	Clock speed	Multiplier	JP1	JP2	JP4	JP8
166MHz	66MHz	2x	1 & 2	2 & 3	5 & 6	1 & 2
200MHz	75MHz	2x	1 & 2	2 & 3	3 & 4	2 & 3

Note: Pins designated should be in the closed position.

CPU SPEED SELECTION (CX 6X86L, CON'T)					
CPU speed	Clock speed	Multiplier	JP9	JP10	JP11
166MHz	66MHz	2x	2 & 3	1 & 2	2 & 3
200MHz	75MHz	2x	1 & 2	2 & 3	1 & 2

Note: Pins designated should be in the closed position.

CPU SPEED SELECTION (IBM 6X86L)						
CPU speed	Clock speed	Multiplier	JP1	JP2	JP4	JP8
166MHz	66MHz	2x	1 & 2	2 & 3	5 & 6	1 & 2
200MHz	75MHz	2x	1 & 2	2 & 3	3 & 4	2 & 3

Note: Pins designated should be in the closed position.

Continued on next page...

DIAMOND FLOWER, INC.  
586STE (REV. A+)

... continued from previous page

CPU SPEED SELECTION (IBM 6X86L, CON'T)					
CPU speed	Clock speed	Multiplier	JP9	JP10	JP11
166MHz	66MHz	2x	2 & 3	1 & 2	2 & 3
200MHz	75MHz	2x	1 & 2	2 & 3	1 & 2

Note: Pins designated should be in the closed position.

CPU SPEED SELECTION (AM K5)						
CPU speed	Clock speed	Multiplier	JP1	JP2	JP4	JP8
75MHz	50MHz	1.5x	1 & 2	1 & 2	3 & 4, 7 & 8	1 & 2
90MHz	60MHz	1.5x	1 & 2	1 & 2	3 & 4, 5 & 6	1 & 2
100MHz	66MHz	1.5x	1 & 2	1 & 2	5 & 6	1 & 2
120MHz	60MHz	1.5x	1 & 2	1 & 2	3 & 4, 5 & 6	1 & 2
133MHz	66MHz	1.5x	1 & 2	1 & 2	5 & 6	1 & 2

Note: Pins designated should be in the closed position.

CPU SPEED SELECTION (AM K5, CON'T)					
CPU speed	Clock speed	Multiplier	JP9	JP10	JP11
75MHz	50MHz	1.5x	2 & 3	2 & 3	2 & 3
90MHz	60MHz	1.5x	1 & 2	2 & 3	2 & 3
100MHz	66MHz	1.5x	2 & 3	1 & 2	2 & 3
120MHz	60MHz	1.5x	1 & 2	2 & 3	2 & 3
133MHz	66MHz	1.5x	2 & 3	1 & 2	2 & 3

Note: Pins designated should be in the closed position.

CPU SPEED SELECTION (INTEL)						
CPU speed	Clock speed	Multiplier	JP1	JP2	JP4	JP8
75MHz	50MHz	1.5x	1 & 2	1 & 2	3 & 4, 7 & 8	1 & 2
90MHz	60MHz	1.5x	1 & 2	1 & 2	3 & 4, 5 & 6	1 & 2
100MHz	66MHz	1.5x	1 & 2	1 & 2	5 & 6	1 & 2
120MHz	60MHz	2x	1 & 2	2 & 3	3 & 4, 5 & 6	1 & 2
133MHz	66MHz	2x	1 & 2	2 & 3	5 & 6	1 & 2
150MHz	60MHz	2.5x	2 & 3	2 & 3	3 & 4, 5 & 6	1 & 2
166MHz	66MHz	2.5x	2 & 3	2 & 3	5 & 6	1 & 2
200MHz	66MHz	3x	2 & 3	1 & 2	5 & 6	1 & 2

Note: Pins designated should be in the closed position.

Continued on next page...

DIAMOND FLOWER, INC.  
586STE (REV. A+)

... continued from previous page

CPU SPEED SELECTION (INTEL, CON'T)					
CPU speed	Clock speed	Multiplier	JP9	JP10	JP11
75MHz	50MHz	1.5x	2 & 3	2 & 3	2 & 3
90MHz	60MHz	1.5x	1 & 2	2 & 3	2 & 3
100MHz	66MHz	1.5x	2 & 3	1 & 2	2 & 3
120MHz	60MHz	2x	1 & 2	2 & 3	2 & 3
133MHz	66MHz	2x	2 & 3	1 & 2	2 & 3
150MHz	60MHz	2.5x	1 & 2	2 & 3	2 & 3
166MHz	66MHz	2.5x	2 & 3	1 & 2	2 & 3
200MHz	66MHz	3x	2 & 3	1 & 2	2 & 3

Note: Pins designated should be in the closed position.

CPU SPEED SELECTION (INTEL MMX)						
CPU speed	Clock speed	Multiplier	JP1	JP2	JP4	JP8
166MHz	66MHz	2.5x	2 & 3	2 & 3	5 & 6	1 & 2
200MHz	66MHz	3x	2 & 3	1 & 2	5 & 6	1 & 2

Note: Pins designated should be in the closed position.

CPU SPEED SELECTION (INTEL MMX, CON'T)					
CPU speed	Clock speed	Multiplier	JP9	JP10	JP11
166MHz	66MHz	2.5x	2 & 3	1 & 2	2 & 3
200MHz	66MHz	3x	2 & 3	1 & 2	2 & 3

Note: Pins designated should be in the closed position.

CPU TYPE SELECTION	
Type	JP6
AMD	Open
Cyrix	Closed
Intel	Open

Continued on next page...

DIAMOND FLOWER, INC.  
586STE (REV. A+)

... continued from previous page

CPU VOLTAGE SELECTION (SINGLE)			
Voltage	JP3	JP5	JP14
3.3v	Open	3 & 4, 5 & 6, 7 & 8	1 & 2
3.5v	Open	3 & 4, 5 & 6, 7 & 8	3 & 4
Note: Pins designated should be in the closed position.			

CPU VOLTAGE SELECTION (DUAL)			
Voltage	JP3	JP5	JP14
2.7v	1 & 2	1 & 2	1 & 2
2.8v	3 & 4	1 & 2	1 & 2
2.9v	5 & 6	1 & 2	1 & 2
Note: Pins designated should be in the closed position.			