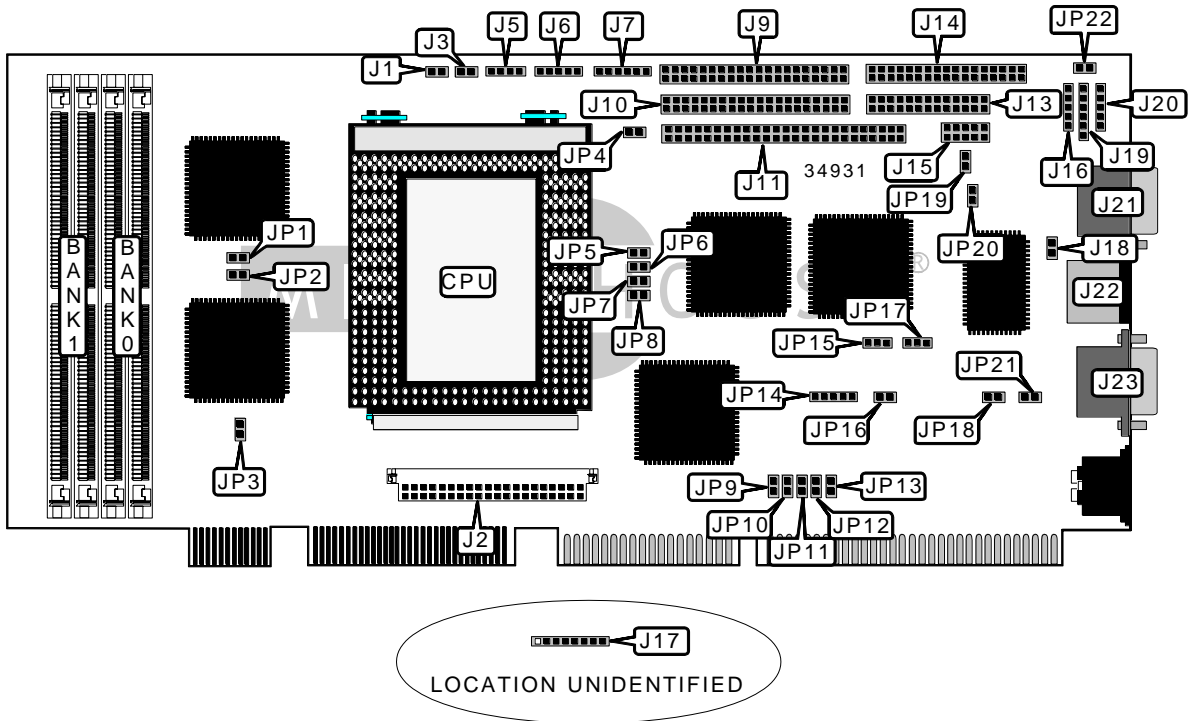


# TECHNOLAND, INC.

## PEAK 610SR

<b>Device Type</b>	Single board computer
<b>Processor</b>	Pentium Pro
<b>Processor Speed</b>	150/166/180/200MHz
<b>Chip Set</b>	Intel
<b>Video Chip Set</b>	None
<b>Maximum Onboard Memory</b>	256MB (EDO supported)
<b>Maximum Video Memory</b>	None
<b>Cache</b>	256/512KB (located on Pentium Pro CPU)
<b>BIOS</b>	Award
<b>Dimensions</b>	338mm x 122mm
<b>I/O Options</b>	Floppy drive interface, IDE interfaces (2), SCSI interface, SCSI adapter connector, parallel port, PS/2 mouse interface, serial ports (3), VRM connector, USB connector
<b>NPU Options</b>	None



Continued on next page. . .

TECHNOLAND, INC.  
PEAK 610SR

... continued from previous page

CONNECTIONS			
Purpose	Location	Purpose	Location
IDE interface LED	J1	F3/F4 connector	J16
VRM connector	J2	Serial port 2 internal	J17
Reset switch	J3	Switching card mouse connector	J18
Speaker	J5	USB connector	J19
Power LED & keylock	J6	Auxiliary keyboard connector	J20
3.3v power	J7	Serial port 2 external	J21
IDE interface 1	J9	PS/2 mouse interface	J22
IDE interface 2	J10	Serial port 1	J23
SCSI interface	J11	Green PC connector	JP3
Parallel port	J13	CPU fan power	JP4
Floppy drive interface	J14	SCSI interface LED	JP22
SCSI adapter connector	J15		

USER CONFIGURABLE SETTINGS		
Function	Label	Position
í SCSI bus select 8-bit	JP5	Open
SCSI bus select 16-bit	JP5	Closed
í ISA CLK vs PCI /4	JP13	Closed
ISA CLK vs PCI /3	JP13	Open
í BIOS type select EPROM	JP14	Pins 2 & 3 closed
BIOS type select flash	JP14	Pins 1 & 2, 4 & 5 closed
í Monitor type select color	JP16	Closed
Monitor type select monochrome	JP16	Open
í CMOS memory normal operation	JP18	Open
CMOS memory clear	JP18	Closed
í SCSI termination enabled	JP19	Closed
SCSI termination disabled	JP19	Open
í On board I/O enabled	JP20	Open
On board I/O disabled	JP20	Closed
í Watchdog timer port select port F2	JP21	Open
Watchdog timer port select port F6	JP21	Closed

Continued on next page. . .

TECHNOLAND, INC.  
PEAK 610SR

... continued from previous page

SIMM CONFIGURATION		
Size	Bank 0	Bank 1
8MB	(2) 1M x 36	None
16MB	(2) 2M x 36	None
16MB	(2) 1M x 36	(2) 1M x 36
24MB	(2) 2M x 36	(2) 1M x 36
32MB	(2) 4M x 36	None
32MB	(2) 2M x 36	(2) 2M x 36
40MB	(2) 4M x 36	(2) 1M x 36
48MB	(2) 4M x 36	(2) 2M x 36
64MB	(2) 8M x 36	None
64MB	(2) 4M x 36	(2) 4M x 36
96MB	(2) 8M x 36	(2) 4M x 36
128MB	(2) 8M x 36	(2) 8M x 36
128MB	(2) 16M x 36	None
192MB	(2) 16M x 36	(2) 8M x 36
256MB	(2) 16M x 36	(2) 16M x 36

Note: Board accepts EDO memory.

CACHE CONFIGURATION
Note: 256KB/512KB cache is located on the Pentium Pro CPU.

CPU SPEED SELECTION							
CPU speed	Clock speed	Multiplier	JP1	JP2	JP6	JP7	JP8
150MHz	60MHz	2.5x	Closed	Open	Closed	Open	Closed
166MHz	66MHz	2.5x	Open	Closed	Closed	Closed	Closed
180MHz	60MHz	3x	Closed	Open	Closed	Open	Closed
200MHz	66MHz	3x	Open	Closed	Closed	Closed	Closed

CPU SPEED SELECTION (CON'T)						
CPU speed	Clock speed	Multiplier	JP9	JP10	JP11	JP12
150MHz	60MHz	2.5x	Closed	Closed	Closed	Open
166MHz	66MHz	2.5x	Closed	Closed	Closed	Open
180MHz	60MHz	3x	Closed	Closed	Open	Closed
200MHz	66MHz	3x	Closed	Closed	Open	Closed

Continued on next page...

TECHNOLAND, INC.  
PEAK 610SR

... continued from previous page

RAID DRAM SELECTION		
Setting	JP15	JP17
1MB	Pins 1 & 2 closed	Pins 1 & 2 closed
4MB	Pins 2 & 3 closed	Pins 2 & 3 closed