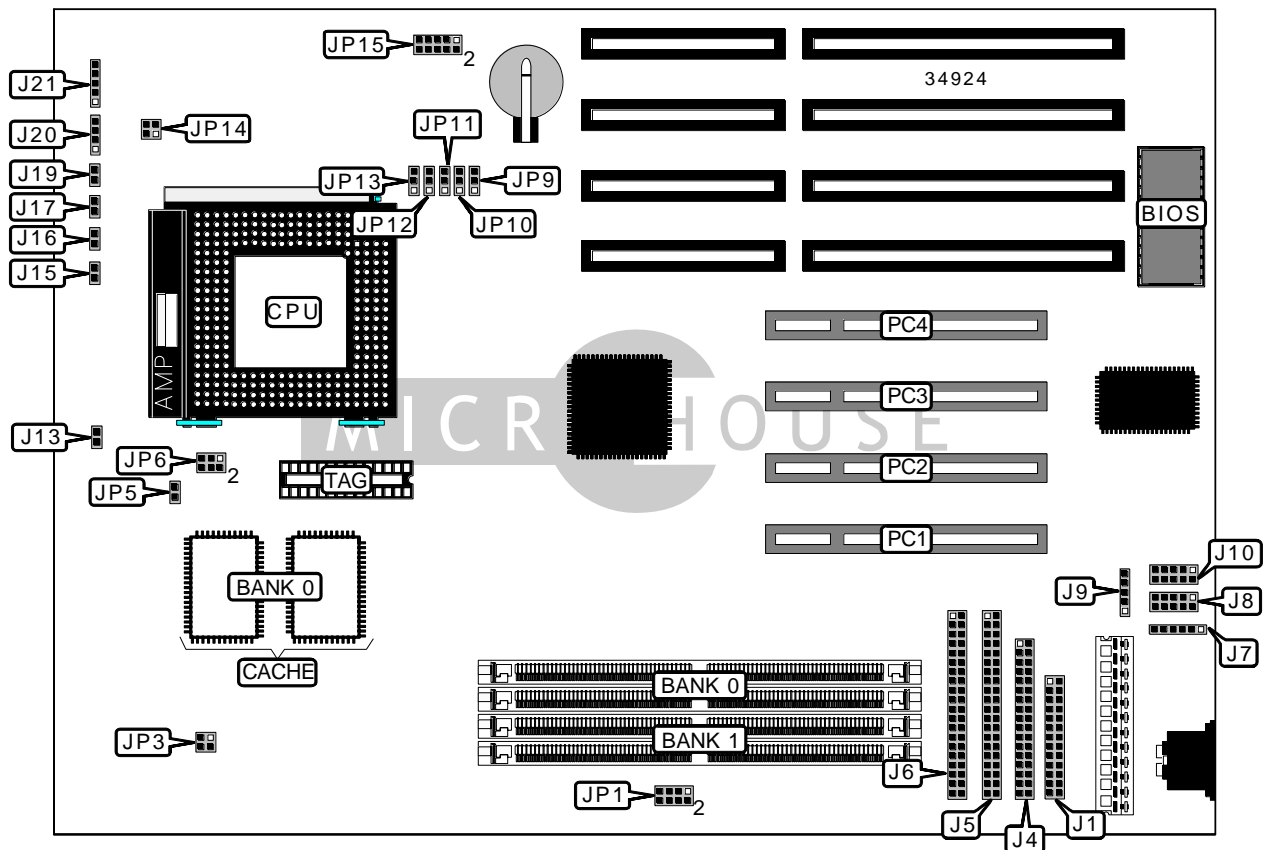


DIAMOND FLOWER, INC. 586STC (REV. DC+)

Device Type	Mainboard
Processor	CX 6X86/IBM 6X86/CX 6X86L/IBM 6X86L/CX 686MX/IBM 6X86MX/ AM K5/AM K6/Pentium
Processor Speed	75/90/100/120/133/150/166/200/233MHz
Chip Set	SIS
Video Chip Set	None
Maximum Onboard Memory	256MB (EDO supported)
Maximum Video Memory	None
Cache	256/512KB
BIOS	Award
Dimensions	280mm x 220mm
I/O Options	32-bit PCI slots (4), floppy drive interface, green PC connector, IDE interfaces (2), parallel port, PS/2 mouse interface, serial ports (2), IR connector
NPU Options	None



Continued on next page...

DIAMOND FLOWER, INC.
586STC (REV. DC+)

... continued from previous page

CONNECTIONS			
Purpose	Location	Purpose	Location
Parallel port	J1	Turbo LED	J13
Floppy drive interface	J4	Green PC LED	J15
IDE interface 2	J5	Green PC connector	J16
IDE interface 1	J6	IDE interface LED	J17
PS/2 mouse interface	J7	Reset switch	J19
Serial port 1	J8	Speaker	J20
IR connector	J9	Power LED & keylock	J21
Serial port 2	J10	32-bit PCI slots	PC1 – PC4

USER CONFIGURABLE SETTINGS		
Function	Label	Position
í CMOS memory normal operation	JP9	Pins 1 & 2 closed
CMOS memory clear	JP9	Pins 2 & 3 closed

SIMM CONFIGURATION		
Size	Bank 0	Bank 1
8MB	(2) 1M x 36	None
16MB	(2) 2M x 36	None
16MB	(2) 1M x 36	(2) 1M x 36
24MB	(2) 2M x 36	(2) 1M x 36
32MB	(2) 4M x 36	None
32MB	(2) 2M x 36	(2) 2M x 36
40MB	(2) 4M x 36	(2) 1M x 36
48MB	(2) 4M x 36	(2) 2M x 36
64MB	(2) 8M x 36	None
64MB	(2) 4M x 36	(2) 4M x 36
72MB	(2) 8M x 36	(2) 1M x 36
80MB	(2) 8M x 36	(2) 2M x 36
96MB	(2) 8M x 36	(2) 4M x 36
128MB	(2) 8M x 36	(2) 8M x 36
128MB	(2) 16M x 36	None
136MB	(2) 16M x 36	(2) 1M x 36

Continued on next page...

DIAMOND FLOWER, INC.
586STC (REV. DC+)

... continued from previous page

SIMM CONFIGURATION (CON'T)		
Size	Bank 0	Bank 1
144MB	(2) 16M x 36	(2) 2M x 36
160MB	(2) 16M x 36	(2) 4M x 36
192MB	(2) 16M x 36	(2) 8M x 36
256MB	(2) 16M x 36	(2) 16M x 36
Note: Board accepts EDO memory.		

CACHE CONFIGURATION		
Size	Bank 0	TAG
256KB	(2) 32K x 32	Unidentified
512KB	(2) 64K x 32	Unidentified

CPU SPEED SELECTION (CX 6X86)								
CPU speed	Clock speed	Multiplier	JP1	JP6	JP10	JP11	JP12	JP13
133MHz	55MHz	2x	1 & 2	1 & 2	1 & 2	2 & 3	2 & 3	1 & 2
150MHz	60MHz	2x	3 & 4, 5 & 6	1 & 2	1 & 2	1 & 2	2 & 3	2 & 3
166MHz	66MHz	2x	5 & 6	1 & 2	1 & 2	2 & 3	1 & 2	2 & 3
200MHz	75MHz	2x	3 & 4	1 & 2	2 & 3	1 & 2	2 & 3	1 & 2
Note: Pins designated should be in the closed position.								

CPU SPEED SELECTION (IBM 6X86)								
CPU speed	Clock speed	Multiplier	JP1	JP6	JP10	JP11	JP12	JP13
133MHz	55MHz	2x	1 & 2	1 & 2	1 & 2	2 & 3	2 & 3	1 & 2
150MHz	60MHz	2x	3 & 4, 5 & 6	1 & 2	1 & 2	1 & 2	2 & 3	2 & 3
166MHz	66MHz	2x	5 & 6	1 & 2	1 & 2	2 & 3	1 & 2	2 & 3
200MHz	75MHz	2x	3 & 4	1 & 2	2 & 3	1 & 2	2 & 3	1 & 2
Note: Pins designated should be in the closed position.								

CPU SPEED SELECTION (CX 6X86L)								
CPU speed	Clock speed	Multiplier	JP1	JP6	JP10	JP11	JP12	JP13
133MHz	55MHz	2x	1 & 2	1 & 2	1 & 2	2 & 3	2 & 3	1 & 2
150MHz	60MHz	2x	3 & 4, 5 & 6	1 & 2	1 & 2	1 & 2	2 & 3	2 & 3
166MHz	66MHz	2x	5 & 6	1 & 2	1 & 2	2 & 3	1 & 2	2 & 3
200MHz	75MHz	2x	3 & 4	1 & 2	2 & 3	1 & 2	2 & 3	1 & 2
Note: Pins designated should be in the closed position.								

Continued on next page...

DIAMOND FLOWER, INC.
586STC (REV. DC+)

... continued from previous page

CPU SPEED SELECTION (IBM 6X86L)								
CPU speed	Clock speed	Multiplier	JP1	JP6	JP10	JP11	JP12	JP13
133MHz	55MHz	2x	1 & 2	1 & 2	1 & 2	2 & 3	2 & 3	1 & 2
150MHz	60MHz	2x	3 & 4, 5 & 6	1 & 2	1 & 2	1 & 2	2 & 3	2 & 3
166MHz	66MHz	2x	5 & 6	1 & 2	1 & 2	2 & 3	1 & 2	2 & 3
200MHz	75MHz	2x	3 & 4	1 & 2	2 & 3	1 & 2	2 & 3	1 & 2

Note: Pins designated should be in the closed position.

CPU SPEED SELECTION (CX 6X86MX)								
CPU speed	Clock speed	Multiplier	JP1	JP6	JP10	JP11	JP12	JP13
166MHz	60MHz	2.5x	3 & 4, 5 & 6	1 & 2, 3 & 4	1 & 2	1 & 2	2 & 3	2 & 3
200MHz	66MHz	2.5x	5 & 6	1 & 2, 3 & 4	1 & 2	2 & 3	1 & 2	2 & 3
233MHz	66MHz	2.5x	5 & 6	1 & 2, 3 & 4	1 & 2	2 & 3	1 & 2	2 & 3
233MHz	75MHz	3x	3 & 4	3 & 4	2 & 3	1 & 2	2 & 3	1 & 2
266MHz	75MHz	3x	3 & 4	3 & 4	2 & 3	1 & 2	2 & 3	1 & 2

Note: Pins designated should be in the closed position.

CPU SPEED SELECTION (IBM 6X86MX)								
CPU speed	Clock speed	Multiplier	JP1	JP6	JP10	JP11	JP12	JP13
166MHz	60MHz	2.5x	3 & 4, 5 & 6	1 & 2, 3 & 4	1 & 2	1 & 2	2 & 3	2 & 3
200MHz	66MHz	2.5x	5 & 6	1 & 2, 3 & 4	1 & 2	2 & 3	1 & 2	2 & 3
233MHz	66MHz	2.5x	5 & 6	1 & 2, 3 & 4	1 & 2	2 & 3	1 & 2	2 & 3
233MHz	75MHz	3x	3 & 4	3 & 4	2 & 3	1 & 2	2 & 3	1 & 2
266MHz	75MHz	3x	3 & 4	3 & 4	2 & 3	1 & 2	2 & 3	1 & 2

Note: Pins designated should be in the closed position.

CPU SPEED SELECTION (AM K5)								
CPU speed	Clock speed	Multiplier	JP1	JP6	JP10	JP11	JP12	JP13
75MHz	50MHz	1.5x	3 & 4, 7 & 8	Open	1 & 2	2 & 3	2 & 3	2 & 3
90MHz	60MHz	1.5x	3 & 4, 5 & 6	Open	1 & 2	1 & 2	2 & 3	2 & 3
100MHz	66MHz	1.5x	5 & 6	Open	1 & 2	2 & 3	1 & 2	2 & 3
120MHz	60MHz	1.5x	3 & 4, 5 & 6	Open	1 & 2	1 & 2	2 & 3	2 & 3
133MHz	66MHz	1.5x	5 & 6	Open	1 & 2	2 & 3	1 & 2	2 & 3
166MHz	66MHz	2.5x	5 & 6	1 & 2, 3 & 4	1 & 2	2 & 3	1 & 2	2 & 3

Note: Pins designated should be in the closed position.

Continued on next page...

DIAMOND FLOWER, INC.
586STC (REV. DC+)

... continued from previous page

CPU SPEED SELECTION (AM K6)								
CPU speed	Clock speed	Multiplier	JP1	JP6	JP10	JP11	JP12	JP13
166MHz	66MHz	2.5x	5 & 6	1 & 2, 3 & 4	1 & 2	2 & 3	1 & 2	2 & 3
200MHz	66MHz	3x	5 & 6	3 & 4	1 & 2	2 & 3	1 & 2	2 & 3
233MHz	66MHz	3.5x	5 & 6	Open	1 & 2	2 & 3	1 & 2	2 & 3

Note: Pins designated should be in the closed position.

CPU SPEED SELECTION (INTEL)								
CPU speed	Clock speed	Multiplier	JP1	JP6	JP10	JP11	JP12	JP13
75MHz	50MHz	1.5x	3 & 4, 7 & 8	Open	1 & 2	2 & 3	2 & 3	2 & 3
90MHz	60MHz	1.5x	3 & 4, 5 & 6	Open	1 & 2	1 & 2	2 & 3	2 & 3
100MHz	66MHz	1.5x	5 & 6	Open	1 & 2	2 & 3	1 & 2	2 & 3
120MHz	60MHz	2x	3 & 4, 5 & 6	1 & 2	1 & 2	1 & 2	2 & 3	2 & 3
133MHz	66MHz	2x	5 & 6	1 & 2	1 & 2	2 & 3	1 & 2	2 & 3
150MHz	60MHz	2.5x	3 & 4, 5 & 6	1 & 2, 3 & 4	1 & 2	1 & 2	2 & 3	2 & 3
166MHz	66MHz	2.5x	5 & 6	1 & 2, 3 & 4	1 & 2	2 & 3	1 & 2	2 & 3
200MHz	66MHz	3x	5 & 6	3 & 4	1 & 2	2 & 3	1 & 2	2 & 3

Note: Pins designated should be in the closed position.

CPU SPEED SELECTION (INTEL MMX)								
CPU speed	Clock speed	Multiplier	JP1	JP6	JP10	JP11	JP12	JP13
166MHz	66MHz	2.5x	5 & 6	1 & 2, 3 & 4	1 & 2	2 & 3	1 & 2	2 & 3
200MHz	66MHz	3x	5 & 6	3 & 4	1 & 2	2 & 3	1 & 2	2 & 3
233MHz	66MHz	3.5x	5 & 6	Open	1 & 2	2 & 3	1 & 2	2 & 3

Note: Pins designated should be in the closed position.

CPU TYPE SELECTION	
Type	JP5
AMD	Open
Cyrix	Closed
IBM	Closed
Intel	Open

Continued on next page...

DIAMOND FLOWER, INC.
586STC (REV. DC+)

... continued from previous page

CPU VOLTAGE SELECTION			
Voltage	JP3	JP14	JP15
3.5v	Open	1 & 2, 3 & 4	Open
3.3v	Open	1 & 2, 3 & 4	3 & 4
3.2v	1 & 2, 3 & 4	Open	1 & 2, 3 & 4
3.1v	1 & 2, 3 & 4	Open	5 & 6
3.0v	1 & 2, 3 & 4	Open	1 & 2, 5 & 6
2.9v	1 & 2, 3 & 4	Open	3 & 4, 5 & 6
2.8v	1 & 2, 3 & 4	Open	1 & 2, 3 & 4, 5 & 6
2.7v	1 & 2, 3 & 4	Open	7 & 8
2.6v	1 & 2, 3 & 4	Open	1 & 2, 7 & 8
2.5v	1 & 2, 3 & 4	Open	3 & 4, 7 & 8

Note: Pins designated should be in the closed position.