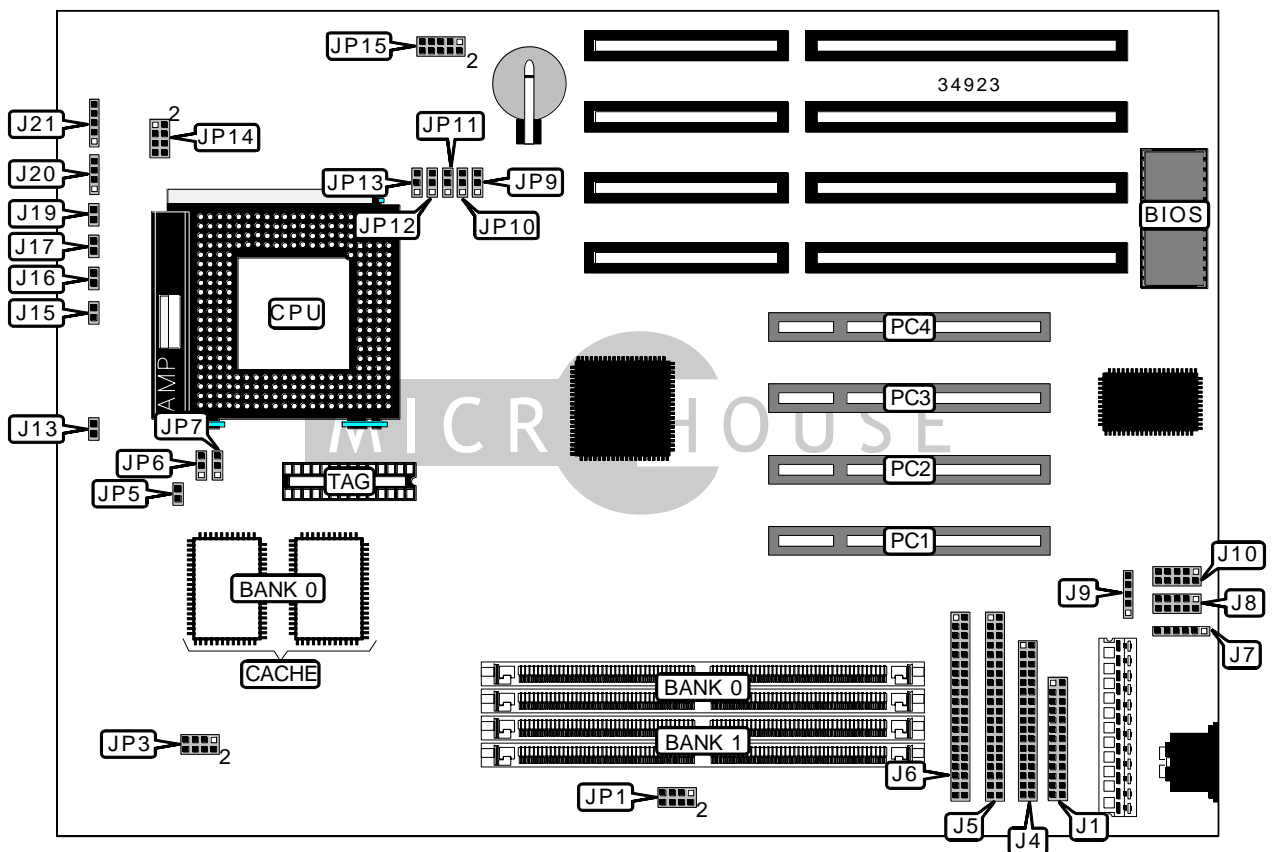


DIAMOND FLOWER, INC. 586STC (REV. A+)

Device Type	Mainboard
Processor	CX 6X86L/IBM 6X86L/AM K5/Pentium
Processor Speed	75/90/100/120/133/150/166/200MHz
Chip Set	SIS
Video Chip Set	None
Maximum Onboard Memory	256MB (EDO supported)
Maximum Video Memory	None
Cache	256/512KB
BIOS	Award
Dimensions	280mm x 220mm
I/O Options	32-bit PCI slots (4), floppy drive interface, green PC connector, IDE interfaces (2), parallel port, PS/2 mouse interface, serial ports (2), IR connector
NPU Options	None



Continued on next page...

DIAMOND FLOWER, INC.
586STC (REV. A+)

... continued from previous page

CONNECTIONS			
Purpose	Location	Purpose	Location
Parallel port	J1	Turbo LED	J13
Floppy drive interface	J4	Green PC LED	J15
IDE interface 2	J5	Green PC connector	J16
IDE interface 1	J6	IDE interface LED	J17
PS/2 mouse interface	J7	Reset switch	J19
Serial port 1	J8	Speaker	J20
IR connector	J9	Power LED & keylock	J21
Serial port 2	J10	32-bit PCI slots	PC1 – PC4

USER CONFIGURABLE SETTINGS		
Function	Label	Position
í CMOS memory normal operation	JP9	Pins 1 & 2 closed
CMOS memory clear	JP9	Pins 2 & 3 closed

SIMM CONFIGURATION		
Size	Bank 0	Bank 1
8MB	(2) 1M x 36	None
16MB	(2) 2M x 36	None
16MB	(2) 1M x 36	(2) 1M x 36
24MB	(2) 2M x 36	(2) 1M x 36
32MB	(2) 4M x 36	None
32MB	(2) 2M x 36	(2) 2M x 36
40MB	(2) 4M x 36	(2) 1M x 36
48MB	(2) 4M x 36	(2) 2M x 36
64MB	(2) 8M x 36	None
64MB	(2) 4M x 36	(2) 4M x 36
72MB	(2) 8M x 36	(2) 1M x 36
80MB	(2) 8M x 36	(2) 2M x 36
96MB	(2) 8M x 36	(2) 4M x 36
128MB	(2) 16M x 36	None

Continued on next page...

DIAMOND FLOWER, INC.
586STC (REV. A+)

... continued from previous page

SIMM CONFIGURATION (CON'T)		
Size	Bank 0	Bank 1
128MB	(2) 8M x 36	(2) 8M x 36
136MB	(2) 16M x 36	(2) 1M x 36
144MB	(2) 16M x 36	(2) 2M x 36
160MB	(2) 16M x 36	(2) 4M x 36
192MB	(2) 16M x 36	(2) 8M x 36
256MB	(2) 16M x 36	(2) 16M x 36

Note: Board accepts EDO memory.

CACHE CONFIGURATION		
Size	Bank 0	TAG
256KB	(2) 32K x 32	Unidentified
512KB	(2) 64K x 32	Unidentified

CPU SPEED SELECTION (CX 6X86)					
CPU speed	Clock speed	Multiplier	JP1	JP6	JP7
133MHz	55MHz	2x	1 & 2	1 & 2	2 & 3
150MHz	60MHz	2x	3 & 4, 5 & 6	1 & 2	2 & 3
166MHz	66MHz	2x	5 & 6	1 & 2	2 & 3
200MHz	75MHz	2x	3 & 4	1 & 2	2 & 3

Note: Pins designated should be in the closed position.

CPU SPEED SELECTION (CX 6X86, CON'T)						
CPU speed	Clock speed	Multiplier	JP10	JP11	JP12	JP13
133MHz	55MHz	2x	1 & 2	2 & 3	2 & 3	1 & 2
150MHz	60MHz	2x	1 & 2	1 & 2	2 & 3	2 & 3
166MHz	66MHz	2x	1 & 2	2 & 3	1 & 2	2 & 3
200MHz	75MHz	2x	2 & 3	1 & 2	2 & 3	1 & 2

Note: Pins designated should be in the closed position.

Continued on next page. . .

DIAMOND FLOWER, INC.
586STC (REV. A+)

... continued from previous page

CPU SPEED SELECTION (IBM 6X86)					
CPU speed	Clock speed	Multiplier	JP1	JP6	JP7
133MHz	55MHz	2x	1 & 2	1 & 2	2 & 3
150MHz	60MHz	2x	3 & 4, 5 & 6	1 & 2	2 & 3
166MHz	66MHz	2x	5 & 6	1 & 2	2 & 3
200MHz	75MHz	2x	3 & 4	1 & 2	2 & 3

Note: Pins designated should be in the closed position.

CPU SPEED SELECTION (IBM 6X86, CON'T)						
CPU speed	Clock speed	Multiplier	JP10	JP11	JP12	JP13
133MHz	55MHz	2x	1 & 2	2 & 3	2 & 3	1 & 2
150MHz	60MHz	2x	1 & 2	1 & 2	2 & 3	2 & 3
166MHz	66MHz	2x	1 & 2	2 & 3	1 & 2	2 & 3
200MHz	75MHz	2x	2 & 3	1 & 2	2 & 3	1 & 2

Note: Pins designated should be in the closed position.

CPU SPEED SELECTION (CX 6X86L)					
CPU speed	Clock speed	Multiplier	JP1	JP6	JP7
133MHz	55MHz	2x	1 & 2	1 & 2	2 & 3
150MHz	60MHz	2x	3 & 4, 5 & 6	1 & 2	2 & 3
166MHz	66MHz	2x	5 & 6	1 & 2	2 & 3
200MHz	75MHz	2x	3 & 4	1 & 2	2 & 3

Note: Pins designated should be in the closed position.

CPU SPEED SELECTION (CX 6X86L, CON'T)						
CPU speed	Clock speed	Multiplier	JP10	JP11	JP12	JP13
133MHz	55MHz	2x	1 & 2	2 & 3	2 & 3	1 & 2
150MHz	60MHz	2x	1 & 2	1 & 2	2 & 3	2 & 3
166MHz	66MHz	2x	1 & 2	2 & 3	1 & 2	2 & 3
200MHz	75MHz	2x	2 & 3	1 & 2	2 & 3	1 & 2

Note: Pins designated should be in the closed position.

Continued on next page...

DIAMOND FLOWER, INC.
586STC (REV. A+)

... continued from previous page

CPU SPEED SELECTION (IBM 6X86L)					
CPU speed	Clock speed	Multiplier	JP1	JP6	JP7
133MHz	55MHz	2x	1 & 2	1 & 2	2 & 3
150MHz	60MHz	2x	3 & 4, 5 & 6	1 & 2	2 & 3
166MHz	66MHz	2x	5 & 6	1 & 2	2 & 3
200MHz	75MHz	2x	3 & 4	1 & 2	2 & 3

Note: Pins designated should be in the closed position.

CPU SPEED SELECTION (IBM 6X86L, CON'T)						
CPU speed	Clock speed	Multiplier	JP10	JP11	JP12	JP13
133MHz	55MHz	2x	1 & 2	2 & 3	2 & 3	1 & 2
150MHz	60MHz	2x	1 & 2	1 & 2	2 & 3	2 & 3
166MHz	66MHz	2x	1 & 2	2 & 3	1 & 2	2 & 3
200MHz	75MHz	2x	2 & 3	1 & 2	2 & 3	1 & 2

Note: Pins designated should be in the closed position.

CPU SPEED SELECTION (AM K5)					
CPU speed	Clock speed	Multiplier	JP1	JP6	JP7
75MHz	50MHz	1.5x	3 & 4, 7 & 8	1 & 2	1 & 2
90MHz	60MHz	1.5x	3 & 4, 5 & 6	1 & 2	1 & 2
100MHz	66MHz	1.5x	5 & 6	1 & 2	1 & 2
120MHz	60MHz	1.5x	3 & 4, 5 & 6	1 & 2	1 & 2
133MHz	66MHz	1.5x	5 & 6	1 & 2	1 & 2

Note: Pins designated should be in the closed position.

CPU SPEED SELECTION (AM K5, CON'T)						
CPU speed	Clock speed	Multiplier	JP10	JP11	JP12	JP13
75MHz	50MHz	1.5x	1 & 2	2 & 3	2 & 3	2 & 3
90MHz	60MHz	1.5x	1 & 2	1 & 2	2 & 3	2 & 3
100MHz	66MHz	1.5x	1 & 2	2 & 3	1 & 2	2 & 3
120MHz	60MHz	1.5x	1 & 2	1 & 2	2 & 3	2 & 3
133MHz	66MHz	1.5x	1 & 2	2 & 3	1 & 2	2 & 3

Note: Pins designated should be in the closed position.

Continued on next page. . .

DIAMOND FLOWER, INC.
586STC (REV. A+)

... continued from previous page

CPU SPEED SELECTION (INTEL)					
CPU speed	Clock speed	Multiplier	JP1	JP6	JP7
75MHz	50MHz	1.5x	3 & 4, 7 & 8	1 & 2	1 & 2
90MHz	60MHz	1.5x	3 & 4, 5 & 6	1 & 2	1 & 2
100MHz	66MHz	1.5x	5 & 6	1 & 2	1 & 2
120MHz	60MHz	2x	3 & 4, 5 & 6	1 & 2	2 & 3
133MHz	66MHz	2x	5 & 6	1 & 2	2 & 3
150MHz	60MHz	2.5x	3 & 4, 5 & 6	2 & 3	2 & 3
166MHz	66MHz	2.5x	5 & 6	2 & 3	2 & 3
200MHz	66MHz	3x	5 & 6	2 & 3	1 & 2

Note: Pins designated should be in the closed position.

CPU SPEED SELECTION (INTEL, CON'T)						
CPU speed	Clock speed	Multiplier	JP10	JP11	JP12	JP13
75MHz	50MHz	1.5x	1 & 2	2 & 3	2 & 3	2 & 3
90MHz	60MHz	1.5x	1 & 2	1 & 2	2 & 3	2 & 3
100MHz	66MHz	1.5x	1 & 2	2 & 3	1 & 2	2 & 3
120MHz	60MHz	2x	1 & 2	1 & 2	2 & 3	2 & 3
133MHz	66MHz	2x	1 & 2	2 & 3	1 & 2	2 & 3
150MHz	60MHz	2.5x	1 & 2	1 & 2	2 & 3	2 & 3
166MHz	66MHz	2.5x	1 & 2	2 & 3	1 & 2	2 & 3
200MHz	66MHz	3x	1 & 2	2 & 3	1 & 2	2 & 3

Note: Pins designated should be in the closed position.

CPU SPEED SELECTION (INTEL MMX)					
CPU speed	Clock speed	Multiplier	JP1	JP6	JP7
166MHz	66MHz	2.5x	5 & 6	2 & 3	2 & 3
200MHz	66MHz	3x	5 & 6	2 & 3	1 & 2

Note: Pins designated should be in the closed position.

CPU SPEED SELECTION (INTEL MMX, CON'T)						
CPU speed	Clock speed	Multiplier	JP10	JP11	JP12	JP13
166MHz	66MHz	2.5x	1 & 2	2 & 3	1 & 2	2 & 3
200MHz	66MHz	3x	1 & 2	2 & 3	1 & 2	2 & 3

Note: Pins designated should be in the closed position.

Continued on next page...

DIAMOND FLOWER, INC.
586STC (REV. A+)

... continued from previous page

CPU TYPE SELECTION	
Type	JP5
AMD	Open
Cyrix	Closed
IBM	Closed
Intel	Open

CPU VOLTAGE SELECTION			
Voltage	JP3	JP14	JP15
3.3v	Open	5 & 6, 7 & 8	3 & 4
3.5v	Open	5 & 6, 7 & 8	1 & 2
2.9v	1 & 2, 3 & 4, 5 & 6	Open	5 & 6
2.8v	1 & 2, 3 & 4, 5 & 6	Open	7 & 8
2.7v	1 & 2, 3 & 4, 5 & 6	Open	9 & 10
Note: Pins designated should be in the closed position.			