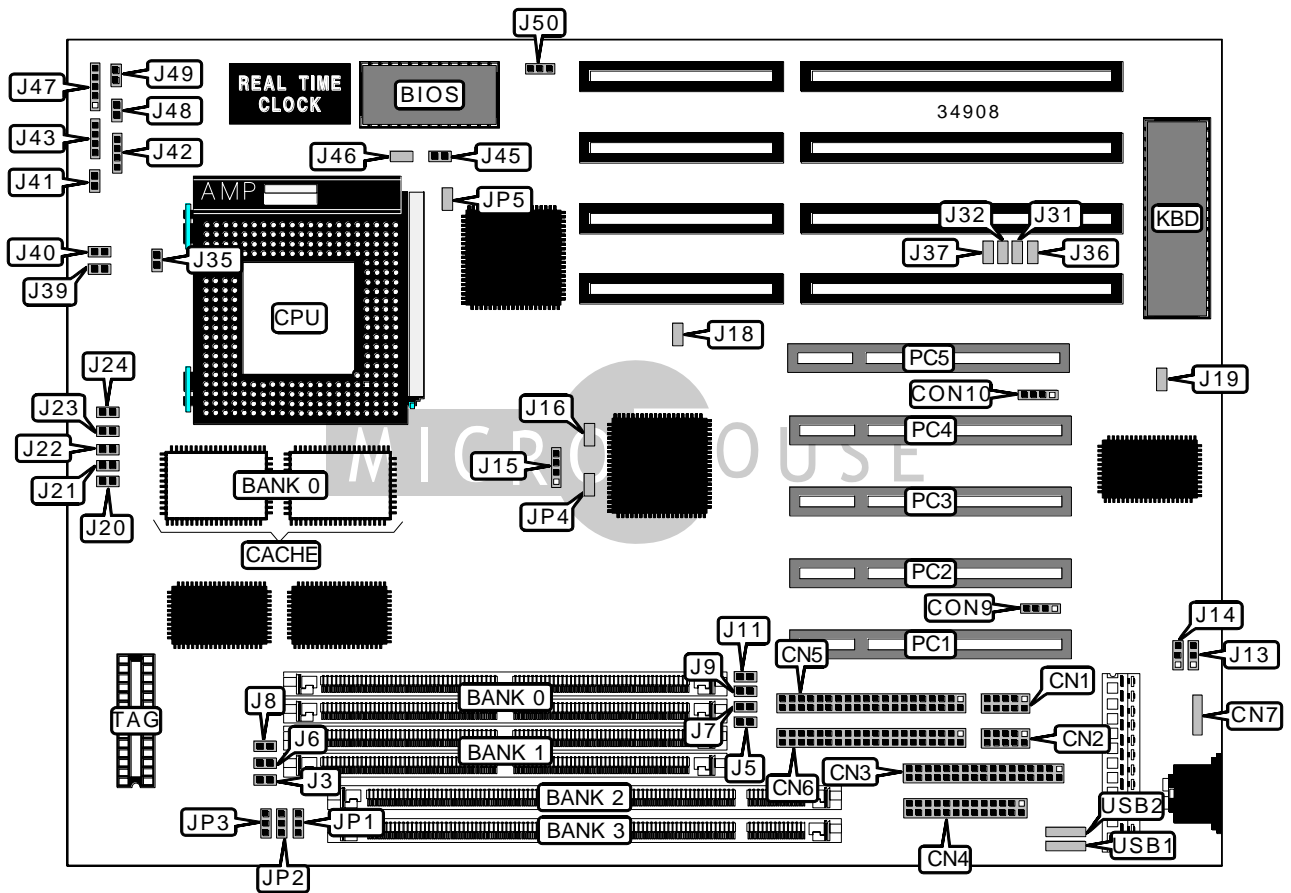


TYAN COMPUTER CORPORATION

S1471

Device Type	Mainboard
Processor	CX 6X86/IBM 6X86/SGS 6X86/CX M1/Pentium
Processor Speed	75/90/100/120/133/150/166/200MHz
Chip Set	Intel
Video Chip Set	None
Maximum Onboard Memory	128MB (EDO & SDRAM supported)
Maximum Video Memory	None
Cache	256/512KB
BIOS	AMI, Award
Dimensions	330mm x 218mm
I/O Options	32-bit PCI slots (5), floppy drive interface, IDE interfaces (2), parallel port, PS/2 mouse interface, serial ports (2), IR connector (2), USB connectors (2)
NPU Options	None



Continued on next page...

TYAN COMPUTER CORPORATION
S 1 4 7 1

... continued from previous page

CONNECTIONS			
Purpose	Location	Purpose	Location
Serial port 2	CN1	Reset switch	J41
Serial port 1	CN2	Speaker	J42
Floppy drive interface	CN3	IDE interface LED	J43
Parallel port	CN4	Power LED & keylock	J47
IDE interface 2	CN5	Turbo LED	J48
IDE interface 1	CN6	Turbo switch	J49
PS/2 mouse interface	CN7	32-bit PCI slots	PC1 – PC5
IR connector	CON9	USB connector 1	USB1
IR connector	CON10	USB connector 2	USB2

USER CONFIGURABLE SETTINGS		
Function	Label	Position
í Factory configured - do not alter	J16	Unidentified
í Factory configured - do not alter	J18	Unidentified
í Factory configured - do not alter	J19	Unidentified
í Factory configured - do not alter	J31	Unidentified
í Factory configured - do not alter	J32	Unidentified
í Factory configured - do not alter	J36	Unidentified
í Factory configured - do not alter	J37	Unidentified
í CMOS memory normal operation	J45	Open
CMOS memory clear	J45	Closed
í Factory configured - do not alter	J46	Unidentified
í Factory configured - do not alter	J50	Pins 1 & 2 closed
í Factory configured - do not alter	JP4	Unidentified
í Factory configured - do not alter	JP5	Unidentified

SIMM CONFIGURATION		
Size	Bank 0	Bank 1
8MB	(2) 1M x 36	None
16MB	(2) 2M x 36	None
16MB	(2) 1M x 36	(2) 1M x 36
24MB	(2) 2M x 36	(2) 1M x 36
32MB	(2) 4M x 36	None
32MB	(2) 2M x 36	(2) 2M x 36

Continued on next page. . .

TYAN COMPUTER CORPORATION
S1471

... continued from previous page

SIMM CONFIGURATION (CON'T)		
Size	Bank 0	Bank 1
40MB	(2) 4M x 36	(2) 1M x 36
48MB	(2) 4M x 36	(2) 2M x 36
64MB	(2) 8M x 36	None
64MB	(2) 4M x 36	(2) 4M x 36
72MB	(2) 8M x 36	(2) 1M x 36
80MB	(2) 8M x 36	(2) 2M x 36
96MB	(2) 8M x 36	(2) 4M x 36
128MB	(2) 8M x 36	(2) 8M x 36

Note: Board accepts EDO memory.

DIMM CONFIGURATION		
Size	Bank 2	Bank 3
8MB	(1) 1M x 64	None
16MB	(1) 2M x 64	None
16MB	(1) 1M x 64	(1) 1M x 64
24MB	(1) 2M x 64	(1) 1M x 64
32MB	(1) 4M x 64	None
32MB	(1) 2M x 64	(1) 2M x 64
40MB	(1) 4M x 64	(1) 1M x 64
48MB	(1) 4M x 64	(1) 2M x 64
64MB	(1) 8M x 64	None
64MB	(1) 4M x 64	(1) 4M x 64
72MB	(1) 8M x 64	(1) 1M x 64
80MB	(1) 8M x 64	(1) 2M x 64
96MB	(1) 8M x 64	(1) 4M x 64
128MB	(1) 8M x 64	(1) 8M x 64

Note: Board accepts SDRAM memory.

DIMM VOLTAGE CONFIGURATION					
Voltage	J3	J5	J6	J7	J8
3.3v	Closed	Open	Closed	Open	Closed
5v	Open	Closed	Open	Closed	Open

Continued on next page. . .

TYAN COMPUTER CORPORATION
S 1 4 7 1

... continued from previous page

DIMM VOLTAGE CONFIGURATION (CON'T)					
Voltage	J9	J11	JP1	JP2	JP3
3.3v	Open	Open	2 & 3	2 & 3	2 & 3
í 5v	Closed	Closed	1 & 2	1 & 2	1 & 2

Note: Pins designated should be in the closed position.

CACHE CONFIGURATION		
Size	Bank 0	TAG
256KB	(2) 32K x 32	Unidentified
512KB	(2) 64K x 32	Unidentified

CPU SPEED SELECTION (CX 6X86)					
CPU speed	Clock speed	Multiplier	J15	J39	J40
120MHz	50MHz	2x	1 & 2, 3 & 4	Open	Closed
150MHz	60MHz	2x	3 & 4	Open	Closed
166MHz	66MHz	2x	1 & 2	Open	Closed

Note: Pins designated should be in the closed position.

CPU SPEED SELECTION (IBM 6X86)					
CPU speed	Clock speed	Multiplier	J15	J39	J40
120MHz	50MHz	2x	1 & 2, 3 & 4	Open	Closed
150MHz	60MHz	2x	3 & 4	Open	Closed
166MHz	66MHz	2x	1 & 2	Open	Closed

Note: Pins designated should be in the closed position.

CPU SPEED SELECTION (SGS 6X86)					
CPU speed	Clock speed	Multiplier	J15	J39	J40
120MHz	50MHz	2x	1 & 2, 3 & 4	Open	Closed
150MHz	60MHz	2x	3 & 4	Open	Closed
166MHz	66MHz	2x	1 & 2	Open	Closed

Note: Pins designated should be in the closed position.

Continued on next page. . .

TYAN COMPUTER CORPORATION
S 1 4 7 1

... continued from previous page

CPU SPEED SELECTION (CX M1)					
CPU speed	Clock speed	Multiplier	J15	J39	J40
120MHz	50MHz	2x	1 & 2, 3 & 4	Open	Closed
150MHz	60MHz	2x	3 & 4	Open	Closed
166MHz	66MHz	2x	1 & 2	Open	Closed

Note: Pins designated should be in the closed position.

CPU SPEED SELECTION (INTEL)					
CPU speed	Clock speed	Multiplier	J15	J39	J40
75MHz	50MHz	1.5x	1 & 2, 3 & 4	Open	Open
90MHz	60MHz	1.5x	3 & 4	Open	Open
100MHz	66MHz	1.5x	1 & 2	Open	Open
120MHz	60MHz	2x	3 & 4	Open	Closed
133MHz	66MHz	2x	1 & 2	Open	Closed
150MHz	60MHz	2.5x	3 & 4	Closed	Closed
166MHz	66MHz	2.5x	1 & 2	Closed	Closed
200MHz	66MHz	3x	1 & 2	Closed	Open

Note: Pins designated should be in the closed position.

CPU SPEED SELECTION (INTEL MMX)					
CPU speed	Clock speed	Multiplier	J15	J39	J40
166MHz	66MHz	2.5x	1 & 2	Closed	Closed
200MHz	66MHz	3x	1 & 2	Closed	Open

Note: Pins designated should be in the closed position.

CPU TYPE SELECTION						
Type	J20	J21	J22	J23	J24	J35
Cyrix	Open	Closed	Open	Closed	Open	Open
IBM	Open	Closed	Open	Closed	Open	Open
SGS	Open	Closed	Open	Closed	Open	Open
í Intel	Closed	Open	Open	Open	Closed	Closed
í Intel MMX	Closed	Open	Open	Open	Closed	Closed

SERIAL PORT SELECTION		
Setting	J13	J14
Used as serial port	Pins 1 & 2 closed	Pins 1 & 2 closed
Used as IR connector	Pins 2 & 3 closed	Pins 2 & 3 closed