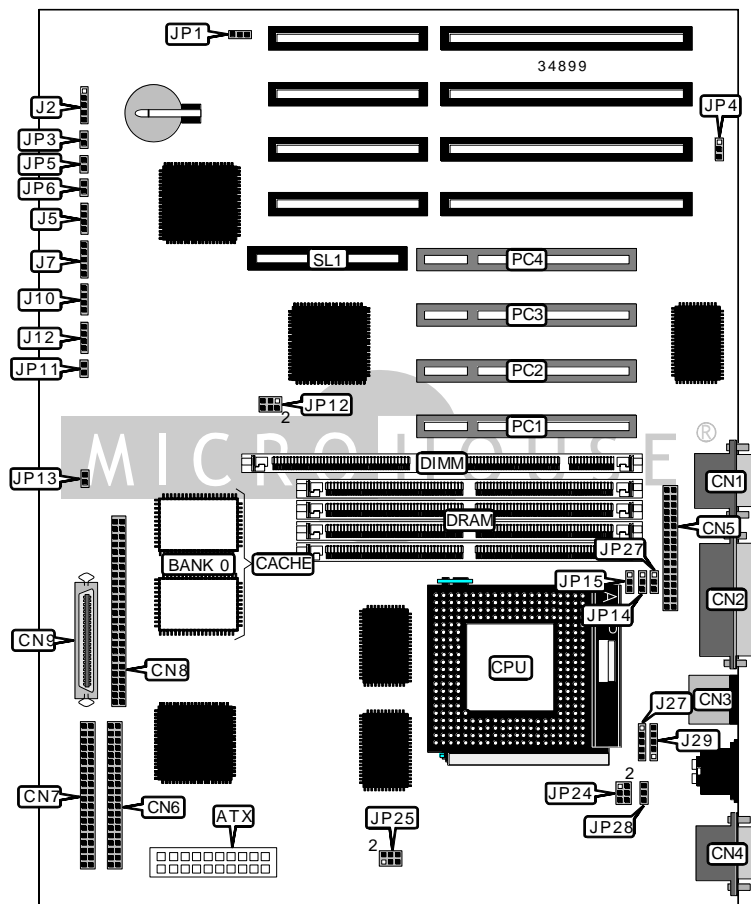


SHUTTLE COMPUTER INTERNATIONAL, INC.

HOT-559S (VER. 1.3)

Device Type	Mainboard
Processor	CX 6X86/IBM 6X86/CX 6X86L/IBM 6X86L/AM K5/AM K6/Pentium
Processor Speed	75/90/100/120/133/150/166/200/233/266MHz
Chip Set	Intel
Video Chip Set	None
Maximum Onboard Memory	128MB (EDO & SDRAM supported)
Maximum Video Memory	None
Cache	256/512KB
BIOS	Award
Dimensions	305mm x 240mm
I/O Options	32-bit PCI slots (4), floppy drive interface, green PC connector, IDE interfaces (2), SCSI-2 interface, Wide Ultra SCSI interface, parallel port, PS/2 mouse port, serial ports (2), IR connector, USB connectors (2), ATX power connector, RAID slot
NPU Options	None



Continued on next page. . .

SHUTTLE COMPUTER INTERNATIONAL, INC.
HOT-559S (VER. 1.3)

... continued from previous page

CONNECTIONS			
Purpose	Location	Purpose	Location
ATX power connector	ATX	Power LED & keylock	J7
Serial port 2	CN1	IDE interface LED	J10
Parallel port	CN2	Sleep/power connector	J12
PS/2 mouse port	CN3	USB connector 1	J27
Serial port 1	CN4	USB connector 2	J29
Floppy drive interface	CN5	Reset switch	JP3
IDE interface	CN6	Green PC connector	JP5
IDE interface	CN7	Green PC LED	JP6
SCSI-2 interface	CN8	SCSI interface LED	JP11
Ultra Wide SCSI interface	CN9	Chassis fan power	JP28
IR connector	J2	32-bit PCI slots	PC1 – PC4
Speaker	J5	RAID slot	SL1

USER CONFIGURABLE SETTINGS		
Function	Label	Position
Flash BIOS voltage select 12v	JP1	Pins 1 & 2 closed
Flash BIOS voltage select 5v	JP1	Pins 2 & 3 closed
í CMOS memory normal operation	JP4	Pins 1 & 2 closed
CMOS memory clear	JP4	Pins 2 & 3 closed
í SCSI termination enabled	JP13	Open
SCSI termination disabled	JP13	Closed

SIMM CONFIGURATION		
Size	Bank 0	Bank 1
8MB	(2) 1M x 36	None
16MB	(2) 2M x 36	None
16MB	(2) 1M x 36	(2) 1M x 36
24MB	(2) 2M x 36	(2) 1M x 36
32MB	(2) 4M x 36	None
32MB	(2) 2M x 36	(2) 2M x 36
40MB	(2) 4M x 36	(2) 1M x 36
48MB	(2) 4M x 36	(2) 2M x 36
64MB	(2) 8M x 36	None

Continued on next page...

SHUTTLE COMPUTER INTERNATIONAL, INC.
HOT-559S (VER. 1.3)

... continued from previous page

SIMM CONFIGURATION (CON'T)		
Size	Bank 0	Bank 1
64MB	(2) 4M x 36	(2) 4M x 36
72MB	(2) 8M x 36	(2) 1M x 36
80MB	(2) 8M x 36	(2) 2M x 36
96MB	(2) 8M x 36	(2) 4M x 36
128MB	(2) 8M x 36	(2) 8M x 36

Note: Board accepts EDO memory.

DIMM CONFIGURATION	
Size	Bank 2
8MB	(1) 1M x 64
16MB	(1) 2M x 64
32MB	(1) 4M x 64
64MB	(1) 8M x 64
128MB	(1) 16M x 64

CACHE CONFIGURATION	
Size	Bank 0
256KB	(2) 32K x 32
512KB	(2) 64K x 32

CPU SPEED SELECTION (CX 6X86)						
CPU speed	Clock speed	Multiplier	JP12	JP14	JP15	JP27
120MHz	50MHz	2x	1 & 2, 3 & 4, 5 & 6	2 & 3	1 & 2	2 & 3
133MHz	55MHz	2x	1 & 2, 3 & 4	2 & 3	1 & 2	2 & 3
150MHz	60MHz	2x	3 & 4, 5 & 6	2 & 3	1 & 2	2 & 3
166MHz	66MHz	2x	1 & 2, 5 & 6	2 & 3	1 & 2	2 & 3

Note: Pins designated should be in the closed position.

CPU SPEED SELECTION (IBM 6X86)						
CPU speed	Clock speed	Multiplier	JP12	JP14	JP15	JP27
120MHz	50MHz	2x	1 & 2, 3 & 4, 5 & 6	2 & 3	1 & 2	2 & 3
133MHz	55MHz	2x	1 & 2, 3 & 4	2 & 3	1 & 2	2 & 3
150MHz	60MHz	2x	3 & 4, 5 & 6	2 & 3	1 & 2	2 & 3
166MHz	66MHz	2x	1 & 2, 5 & 6	2 & 3	1 & 2	2 & 3

Note: Pins designated should be in the closed position.

Continued on next page. . .

SHUTTLE COMPUTER INTERNATIONAL, INC.
HOT-559S (VER. 1.3)

... continued from previous page

CPU SPEED SELECTION (CX 6X86L)						
CPU speed	Clock speed	Multiplier	JP12	JP14	JP15	JP27
150MHz	60MHz	2x	3 & 4, 5 & 6	2 & 3	1 & 2	2 & 3
166MHz	66MHz	2x	1 & 2, 5 & 6	2 & 3	1 & 2	2 & 3

Note: Pins designated should be in the closed position.

CPU SPEED SELECTION (IBM 6X86L)						
CPU speed	Clock speed	Multiplier	JP12	JP14	JP15	JP27
150MHz	60MHz	2x	3 & 4, 5 & 6	2 & 3	1 & 2	2 & 3
166MHz	66MHz	2x	1 & 2, 5 & 6	2 & 3	1 & 2	2 & 3

Note: Pins designated should be in the closed position.

CPU SPEED SELECTION (AM K5)						
CPU speed	Clock speed	Multiplier	JP12	JP14	JP15	JP27
75MHz	50MHz	1.5x	1 & 2, 3 & 4, 5 & 6	2 & 3	2 & 3	2 & 3
90MHz	60MHz	1.5x	3 & 4, 5 & 6	2 & 3	2 & 3	2 & 3
100MHz	66MHz	1.5x	1 & 2, 5 & 6	2 & 3	2 & 3	2 & 3
120MHz	60MHz	1.5x	3 & 4, 5 & 6	2 & 3	2 & 3	2 & 3
133MHz	66MHz	1.5x	1 & 2, 5 & 6	2 & 3	2 & 3	2 & 3
150MHz	60MHz	1.75x	3 & 4, 5 & 6	1 & 2	1 & 2	2 & 3
166MHz	66MHz	1.75x	1 & 2, 5 & 6	1 & 2	1 & 2	2 & 3

Note: Pins designated should be in the closed position.

CPU SPEED SELECTION (AM K5)						
CPU speed	Clock speed	Multiplier	JP12	JP14	JP15	JP27
166MHz	66MHz	2.5x	1 & 2, 5 & 6	1 & 2	1 & 2	2 & 3
200MHz	66MHz	3x	1 & 2, 5 & 6	1 & 2	2 & 3	2 & 3
233MHz	66MHz	3.5x	1 & 2, 5 & 6	2 & 3	2 & 3	2 & 3
266MHz	66MHz	4x	1 & 2, 5 & 6	2 & 3	1 & 2	1 & 2

Note: Pins designated should be in the closed position.

Continued on next page...

SHUTTLE COMPUTER INTERNATIONAL, INC.
HOT-559S (VER. 1.3)

... continued from previous page

CPU SPEED SELECTION (INTEL)						
CPU speed	Clock speed	Multiplier	JP12	JP14	JP15	JP27
75MHz	50MHz	1.5x	1 & 2, 3 & 4, 5 & 6	2 & 3	2 & 3	2 & 3
90MHz	60MHz	1.5x	3 & 4, 5 & 6	2 & 3	2 & 3	2 & 3
100MHz	66MHz	1.5x	1 & 2, 5 & 6	2 & 3	2 & 3	2 & 3
120MHz	60MHz	2x	3 & 4, 5 & 6	2 & 3	1 & 2	2 & 3
133MHz	66MHz	2x	1 & 2, 5 & 6	2 & 3	1 & 2	2 & 3
150MHz	60MHz	2.5x	3 & 4, 5 & 6	1 & 2	1 & 2	2 & 3
166MHz	66MHz	2.5x	1 & 2, 5 & 6	1 & 2	1 & 2	2 & 3
200MHz	66MHz	3x	1 & 2, 5 & 6	1 & 2	2 & 3	2 & 3

Note: Pins designated should be in the closed position.

CPU SPEED SELECTION (INTEL MMX)						
CPU speed	Clock speed	Multiplier	JP12	JP14	JP15	JP27
150MHz	60MHz	2.5x	3 & 4, 5 & 6	1 & 2	1 & 2	2 & 3
166MHz	66MHz	2.5x	1 & 2, 5 & 6	1 & 2	1 & 2	2 & 3
200MHz	66MHz	3x	1 & 2, 5 & 6	1 & 2	2 & 3	2 & 3
233MHz	66MHz	3.5x	1 & 2, 5 & 6	2 & 3	2 & 3	2 & 3

Note: Pins designated should be in the closed position.

CPU VOLTAGE SELECTION (SINGLE)		
Voltage	JP24	JP25
3.3v	Pins 3 & 4, 5 & 6 closed	Pins 3 & 5, 4 & 6 closed
3.52v	Pins 1 & 3, 5 & 6 closed	Pins 3 & 5, 4 & 6 closed

CPU VOLTAGE SELECTION (DUAL)		
V core	JP24	JP25
2.8v	Pins 5 & 6 closed	Pins 1 & 3, 2 & 4 closed
2.9v	Pins 1 & 2, 5 & 6 closed	Pins 1 & 3, 2 & 4 closed
3.2v	Pins 3 & 4 closed	Pins 1 & 3, 2 & 4 closed