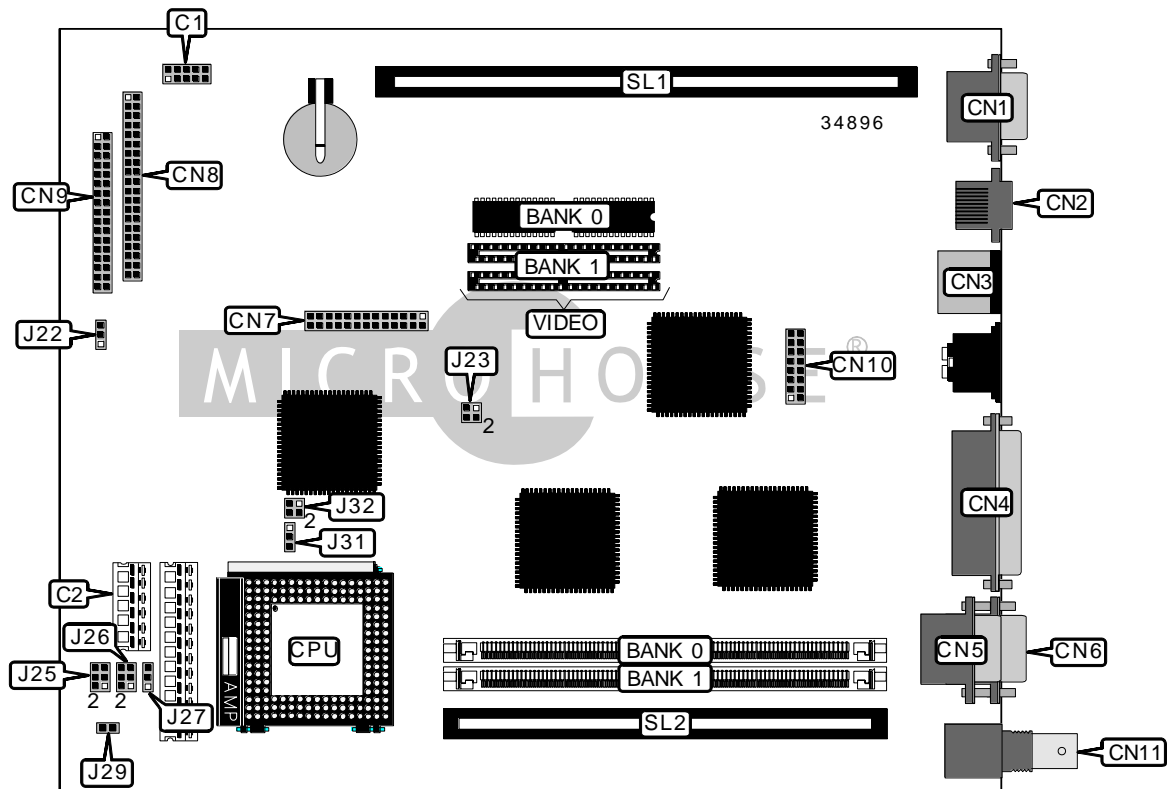


# UNISYS CORPORATION OPEN SYSTEMS CWP

<b>Device Type</b>	Mainboard
<b>Processor</b>	80486SX2/80486DX/80486DX2/80486DX4
<b>Processor Speed</b>	33/50(internal)/66(internal)/100(internal)MHz
<b>Chip Set</b>	Unidentified
<b>Video Chip Set</b>	Cirrus Logic
<b>Maximum Onboard Memory</b>	64MB
<b>Maximum Video Memory</b>	2MB
<b>Cache</b>	256KB
<b>BIOS</b>	Unidentified
<b>Dimensions</b>	254mm x 218mm
<b>I/O Options</b>	Ethernet connector, floppy drive interface, IDE interface, parallel port, PS/2 mouse port, serial ports (2), VGA feature connector, VGA port, riser slot, cache slot
<b>NPU Options</b>	None



*Continued on next page...*

UNISYS CORPORATION  
OPEN SYSTEMS CWP

... continued from previous page

CONNECTIONS			
Purpose	Location	Purpose	Location
LED, speaker	C1	VGA feature connector	CN7
3.3v power	C2	IDE interface 1	CN8
VGA port	CN1	Floppy drive interface	CN9
Ethernet connector	CN2	Smart port connector	CN10
PS/2 mouse port	CN3	BNC connector	CN11
Parallel port	CN4	Riser slot	SL1
Serial port 1	CN5	Cache slot	SL2
Serial port 2	CN6		

SIMM CONFIGURATION		
Size	Bank 0	Bank 1
1MB	(1) 256K x 36	None
2MB	(1) 512K x 36	None
2MB	(1) 256K x 36	(1) 256K x 36
4MB	(1) 1M x 36	None
4MB	(1) 512K x 36	(1) 512K x 36
5MB	(1) 1M x 36	(1) 256K x 36
6MB	(1) 1M x 36	(1) 512K x 36
8MB	(1) 2M x 36	None
8MB	(1) 1M x 36	(1) 1M x 36
9MB	(1) 2M x 36	(1) 256K x 36
10MB	(1) 2M x 36	(1) 512K x 36
12MB	(1) 2M x 36	(1) 1M x 36
16MB	(1) 4M x 36	None
16MB	(1) 2M x 36	(1) 2M x 36
17MB	(1) 4M x 36	(1) 256K x 36
18MB	(1) 4M x 36	(1) 512K x 36
20MB	(1) 4M x 36	(1) 1M x 36
24MB	(1) 4M x 36	(1) 2M x 36
32MB	(1) 8M x 36	None
32MB	(1) 4M x 36	(1) 4M x 36
33MB	(1) 8M x 36	(1) 256K x 36
34MB	(1) 8M x 36	(1) 512K x 36
36MB	(1) 8M x 36	(1) 1M x 36
40MB	(1) 8M x 36	(1) 2M x 36
48MB	(1) 8M x 36	(1) 4M x 36
64MB	(1) 8M x 36	(1) 8M x 36

Continued on next page...

UNISYS CORPORATION  
OPEN SYSTEMS CWP

... continued from previous page

CACHE CONFIGURATION	
Size	SL2
256KB	256KB module installed

VIDEO MEMORY CONFIGURATION		
Size	Bank 0	Bank 1
1MB	1MB	None
2MB	1MB	(2) 256K x 16

CPU TYPE SELECTION				
Type	J22	J23	J25	J26
80486SX2-33	1 & 2	1 & 3	1 & 3, 2 & 4	1 & 3, 2 & 4
80486DX2-50	1 & 2	2 & 4	1 & 3, 2 & 4	1 & 3, 2 & 4
80486DX2-66	1 & 2	1 & 3	1 & 3, 2 & 4	1 & 3, 2 & 4
80486DX4-100	1 & 2	1 & 3	3 & 5, 4 & 6	3 & 5, 4 & 6

Note: Pins designated should be in the closed position.

CPU TYPE SELECTION (CON'T)				
Type	J27	J29	J31	J32
80486SX2-33	1 & 2	Open	1 & 2	Open
80486DX2-50	1 & 2	Open	1 & 2	Open
80486DX2-66	1 & 2	Open	1 & 2	Open
80486DX4-100	2 & 3	Open	1 & 2	Open

Note: Pins designated should be in the closed position.