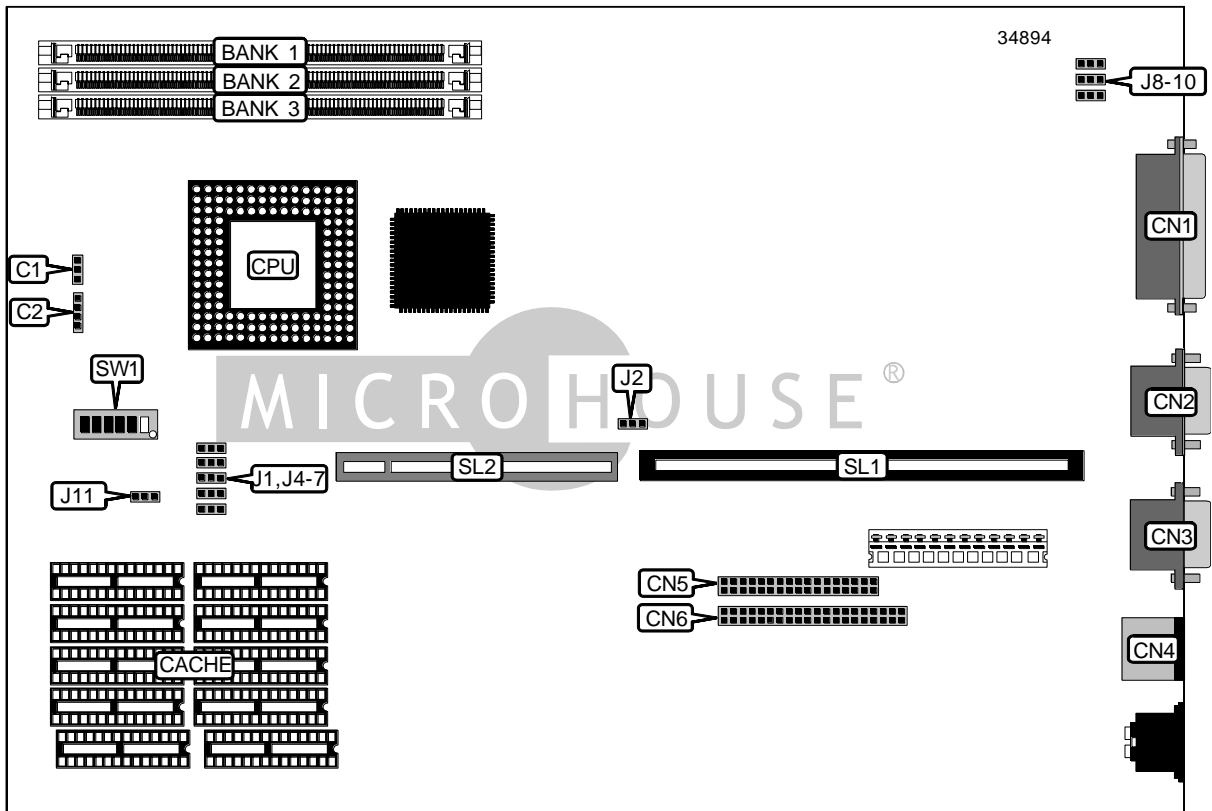


TRIGEM MICROSYSTEM, INC.

486 / M V

| | |
|-------------------------------|---|
| Device Type | Mainboard |
| Processor | 80486SX/80486DX/80486DX2 |
| Processor Speed | 25/33/50(internal)/66(internal)MHz |
| Chip Set | Unidentified |
| Video Chip Set | Unidentified |
| Maximum Onboard Memory | 40MB |
| Maximum Video Memory | 1MB |
| Cache | 64/128/256KB |
| BIOS | Unidentified |
| Dimensions | 330mm x 218mm |
| I/O Options | 32-bit VESA local bus slot, floppy drive interface, IDE interface, parallel port, PS/2 mouse port, serial ports (2), riser slot |
| NPU Options | None |



Continued on next page. . .

TRIGEM MICROSYSTEM, INC.
486/MV

... continued from previous page

| CONNECTIONS | | | |
|---|----------|----------------------------|----------|
| Purpose | Location | Purpose | Location |
| Parallel port | CN1 | Floppy drive interface | CN5 |
| Serial port | CN2 | IDE interface | CN6 |
| Serial port | CN3 | Riser slot | SL1 |
| PS/2 mouse port | CN4 | 32-bit VESA local bus slot | SL2 |
| Note: CN1 – CN6 are for general location purposes. The location may not be exact. | | | |

| USER CONFIGURABLE SETTINGS | | |
|-------------------------------------|-------|-------------------|
| Function | Label | Position |
| í Factory configured - do not alter | C1 | Unidentified |
| í Factory configured - do not alter | C2 | Unidentified |
| í Factory configured - do not alter | J2 | Unidentified |
| í Factory configured - do not alter | J8 | Unidentified |
| í Factory configured - do not alter | J9 | Unidentified |
| í CMOS memory normal operation | J10 | Pins 2 & 3 closed |
| CMOS memory clear | J10 | Pins 1 & 2 closed |
| í Factory configured - do not alter | J11 | Unidentified |
| í Password enabled | SW1/4 | Off |
| Password disabled | SW1/4 | On |
| í Monitor type select color | SW1/5 | On |
| Monitor type select monochrome | SW1/5 | Off |
| í Cache disabled | SW1/6 | Off |
| Cache enabled | SW1/6 | On |

| SIMM CONFIGURATION | | | | |
|--|--------|-------------|-------------|-------------|
| Size | Bank 0 | Bank 1 | Bank 2 | Bank 3 |
| 4MB | 4MB | None | None | None |
| 8MB | 4MB | (1) 1M x 36 | None | None |
| 12MB | 4MB | (1) 1M x 36 | (1) 1M x 36 | None |
| 16MB | 4MB | (1) 1M x 36 | (1) 1M x 36 | (1) 1M x 36 |
| 20MB | 4MB | (1) 4M x 36 | None | None |
| 24MB | 4MB | (1) 1M x 36 | (1) 4M x 36 | None |
| 36MB | 4MB | (1) 4M x 36 | (1) 4M x 36 | None |
| 40MB | 4MB | (1) 1M x 36 | (1) 4M x 36 | (1) 4M x 36 |
| Note: Bank 0 is factory installed and is not configurable. | | | | |

Continued on next page. . .

TRIGEM MICROSYSTEM, INC.
486/MV

... continued from previous page

| CACHE CONFIGURATION | | | |
|---------------------|-------------|-------------|--------------|
| Size | Bank 0 | Bank 1 | TAG |
| 64KB | (4) 8K x 8 | (4) 8K x 8 | Unidentified |
| 128KB | (4) 32K x 8 | None | Unidentified |
| 256KB | (4) 32K x 8 | (4) 32K x 8 | Unidentified |

| CACHE JUMPER CONFIGURATION | | | | |
|----------------------------|-------------------|-------------------|-------------------|-------------------|
| Size | J4 | J5 | J6 | J7 |
| None | Pins 1 & 2 closed | Pins 1 & 2 closed | Pins 1 & 2 closed | Pins 1 & 2 closed |
| 64KB | Pins 1 & 2 closed | Pins 1 & 2 closed | Pins 1 & 2 closed | Pins 2 & 3 closed |
| 128KB | Pins 2 & 3 closed | Pins 1 & 2 closed | Pins 2 & 3 closed | Pins 1 & 2 closed |
| 256KB | Pins 2 & 3 closed | Pins 2 & 3 closed | Pins 1 & 2 closed | Pins 2 & 3 closed |

| VIDEO MEMORY CONFIGURATION |
|--|
| Note: Board accepts 512KB/1MB of video memory. The location and chip sizes are unidentified. |

| CPU SPEED SELECTION | | | |
|---------------------|-------|-------|-------|
| Speed | SW1/1 | SW1/2 | SW1/3 |
| 25MHz | Off | Off | On |
| 33MHz | On | On | Off |
| 50iMHz | Off | Off | On |
| 66iMHz | On | On | Off |

| CPU TYPE SELECTION | |
|--------------------|-------------------|
| Type | J1 |
| 80486SX | Pins 2 & 3 closed |
| 80486DX | Pins 1 & 2 closed |
| 80486DX2 | Pins 1 & 2 closed |