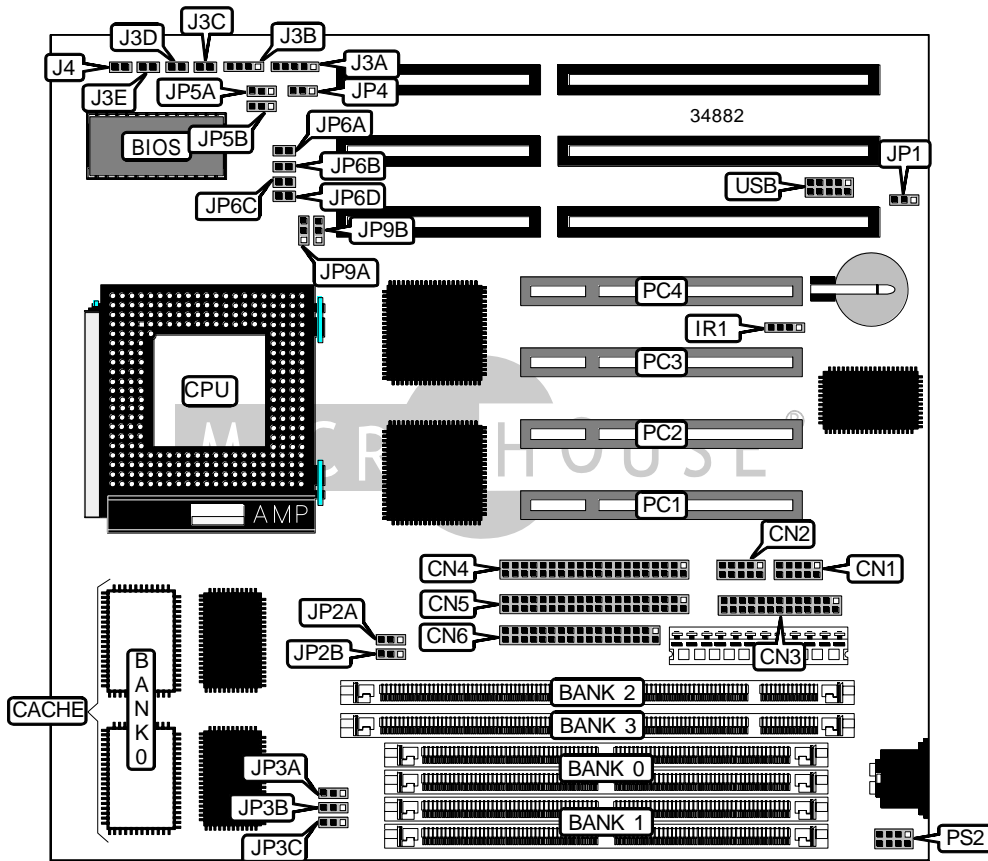


PC WAVE, INC. M 5 3 7

Device Type	Mainboard
Processor	CX 6X86/IBM 6X86/CX 6X86L/IBM 6X86L/CX 686MX/IBM 6X86MX/ AM K5/AM K6/IDT C6/Pentium
Processor Speed	75/90/100/120/133/150/166/180/200/233MHz
Chip Set	VX Pro
Video Chip Set	None
Maximum Onboard Memory	384MB (EDO & SDRAM supported)
Maximum Video Memory	None
Cache	512KB
BIOS	Award
Dimensions	254mm x 218mm
I/O Options	32-bit PCI slots (4), floppy drive interface, IDE interfaces (2), parallel port, PS/2 mouse interface, serial ports (2), IR connector, USB connector
NPU Options	None



Continued on next page. . .

PC WAVE, INC.
M537

... continued from previous page

CONNECTIONS			
Purpose	Location	Purpose	Location
Serial port 1	CN1	Speaker	J3B
Serial port 2	CN2	Reset switch	J3C
Parallel port	CN3	IDE interface LED	J3D
IDE interface 2	CN4	Turbo LED	J3E
IDE interface 1	CN5	Turbo switch	J4
Floppy drive interface	CN6	32-bit PCI slots	PC1 – PC4
IR connector	IR1	PS/2 mouse interface	PS2
Power LED & keylock	J3A	USB connector	USB

USER CONFIGURABLE SETTINGS		
Function	Label	Position
CMOS memory normal operation	JP1	Pins 1 & 2 closed
CMOS memory clear	JP1	Pins 2 & 3 closed
PCI clock select CPU CLK/2	JP3D	Pins 1 & 2 closed
PCI clock select 33MHz	JP3D	Pins 2 & 3 closed
Flash BIOS voltage select 12v	JP4	Pins 1 & 2 closed
Flash BIOS voltage select 5v	JP4	Pins 2 & 3 closed
Note: The location of JP3D is unidentified.		

SIMM CONFIGURATION		
Size	Bank 0	Bank 1
8MB	(2) 1M x 36	None
16MB	(2) 2M x 36	None
16MB	(2) 1M x 36	(2) 1M x 36
24MB	(2) 2M x 36	(2) 1M x 36
32MB	(2) 4M x 36	None
32MB	(2) 2M x 36	(2) 2M x 36
40MB	(2) 4M x 36	(2) 1M x 36
48MB	(2) 4M x 36	(2) 2M x 36
64MB	(2) 8M x 36	None
64MB	(2) 4M x 36	(2) 4M x 36
72MB	(2) 8M x 36	(2) 1M x 36
80MB	(2) 8M x 36	(2) 2M x 36
96MB	(2) 8M x 36	(2) 4M x 36
128MB	(2) 8M x 36	(2) 8M x 36
128MB	(2) 16M x 36	None
136MB	(2) 16M x 36	(2) 1M x 36

Continued on next page...

PC WAVE, INC.
M537

... continued from previous page

SIMM CONFIGURATION (CON'T)		
Size	Bank 0	Bank 1
144MB	(2) 16M x 36	(2) 2M x 36
160MB	(2) 16M x 36	(2) 4M x 36
192MB	(2) 16M x 36	(2) 8M x 36
256MB	(2) 16M x 36	(2) 16M x 36
Note: Board accepts EDO memory. Do not populate banks 0 & 3 at the same time.		

DIMM CONFIGURATION		
Size	Bank 2	Bank 3
8MB	(1) 1M x 64	None
16MB	(1) 2M x 64	None
16MB	(1) 1M x 64	(1) 1M x 64
24MB	(1) 2M x 64	(1) 1M x 64
32MB	(1) 4M x 64	None
32MB	(1) 2M x 64	(1) 2M x 64
40MB	(1) 4M x 64	(1) 1M x 64
48MB	(1) 4M x 64	(1) 2M x 64
64MB	(1) 8M x 64	None
64MB	(1) 4M x 64	(1) 4M x 64
72MB	(1) 8M x 64	(1) 1M x 64
80MB	(1) 8M x 64	(1) 2M x 64
96MB	(1) 8M x 64	(1) 4M x 64
128MB	(1) 8M x 64	(1) 8M x 64
Note: Board accepts SDRAM memory.		

DIMM/SIMM VOLTAGE CONFIGURATION		
Voltage	JP2A	JP2B
3.3v	Pins 2 & 3 closed	Pins 2 & 3 closed
5v	Pins 1 & 2 closed	Pins 1 & 2 closed

CACHE CONFIGURATION	
Size	Bank 0
512KB	(2) 64K x 32

Continued on next page. . .

PC WAVE, INC.
M537

... continued from previous page

CPU SPEED SELECTION (CX 6X86)							
CPU speed	Clock speed	Multiplier	JP3A	JP3B	JP3C	JP5A	JP5B
120MHz	50MHz	2x	2 & 3	2 & 3	2 & 3	2 & 3	1 & 2
133MHz	55MHz	2x	1 & 2	2 & 3	2 & 3	2 & 3	1 & 2
150MHz	60MHz	2x	2 & 3	2 & 3	1 & 2	2 & 3	1 & 2
166MHz	66MHz	2x	2 & 3	1 & 2	2 & 3	2 & 3	1 & 2

Note: Pins designated should be in the closed position.

CPU SPEED SELECTION (IBM 6X86)							
CPU speed	Clock speed	Multiplier	JP3A	JP3B	JP3C	JP5A	JP5B
120MHz	50MHz	2x	2 & 3	2 & 3	2 & 3	2 & 3	1 & 2
133MHz	55MHz	2x	1 & 2	2 & 3	2 & 3	2 & 3	1 & 2
150MHz	60MHz	2x	2 & 3	2 & 3	1 & 2	2 & 3	1 & 2
166MHz	66MHz	2x	2 & 3	1 & 2	2 & 3	2 & 3	1 & 2

Note: Pins designated should be in the closed position.

CPU SPEED SELECTION (CX 6X86L)							
CPU speed	Clock speed	Multiplier	JP3A	JP3B	JP3C	JP5A	JP5B
120MHz	50MHz	2x	2 & 3	2 & 3	2 & 3	2 & 3	1 & 2
133MHz	55MHz	2x	1 & 2	2 & 3	2 & 3	2 & 3	1 & 2
150MHz	60MHz	2x	2 & 3	2 & 3	1 & 2	2 & 3	1 & 2
166MHz	66MHz	2x	2 & 3	1 & 2	2 & 3	2 & 3	1 & 2

Note: Pins designated should be in the closed position.

CPU SPEED SELECTION (IBM 6X86L)							
CPU speed	Clock speed	Multiplier	JP3A	JP3B	JP3C	JP5A	JP5B
120MHz	50MHz	2x	2 & 3	2 & 3	2 & 3	2 & 3	1 & 2
133MHz	55MHz	2x	1 & 2	2 & 3	2 & 3	2 & 3	1 & 2
150MHz	60MHz	2x	2 & 3	2 & 3	1 & 2	2 & 3	1 & 2
166MHz	66MHz	2x	2 & 3	1 & 2	2 & 3	2 & 3	1 & 2

Note: Pins designated should be in the closed position.

CPU SPEED SELECTION (CX 6X86MX)							
CPU speed	Clock speed	Multiplier	JP3A	JP3B	JP3C	JP5A	JP5B
166MHz	66MHz	2.5x	2 & 3	1 & 2	2 & 3	2 & 3	2 & 3
200MHz	66MHz	3x	2 & 3	1 & 2	2 & 3	1 & 2	2 & 3
233MHz	75MHz	3x	1 & 2	2 & 3	1 & 2	1 & 2	2 & 3

Note: Pins designated should be in the closed position.

Continued on next page...

PC WAVE, INC.
M 5 3 7

... continued from previous page

CPU SPEED SELECTION (IBM 6X86MX)							
CPU speed	Clock speed	Multiplier	JP3A	JP3B	JP3C	JP5A	JP5B
166MHz	66MHz	2.5x	2 & 3	1 & 2	2 & 3	2 & 3	2 & 3
200MHz	66MHz	3x	2 & 3	1 & 2	2 & 3	1 & 2	2 & 3
233MHz	75MHz	3x	1 & 2	2 & 3	1 & 2	1 & 2	2 & 3

Note: Pins designated should be in the closed position.

CPU SPEED SELECTION (AM K5)							
CPU speed	Clock speed	Multiplier	JP3A	JP3B	JP3C	JP5A	JP5B
75MHz	50MHz	1.5x	2 & 3	2 & 3	2 & 3	1 & 2	1 & 2
90MHz	60MHz	1.5x	2 & 3	2 & 3	1 & 2	1 & 2	1 & 2
100MHz	66MHz	1.5x	2 & 3	1 & 2	2 & 3	1 & 2	1 & 2
120MHz	60MHz	2.0x	2 & 3	2 & 3	1 & 2	2 & 3	1 & 2
133MHz	66MHz	2.0x	2 & 3	1 & 2	2 & 3	2 & 3	1 & 2
150MHz	60MHz	2.5x	2 & 3	2 & 3	1 & 2	2 & 3	2 & 3
166MHz	66MHz	2.5x	2 & 3	1 & 2	2 & 3	2 & 3	2 & 3

Note: Pins designated should be in the closed position.

CPU SPEED SELECTION (AM K6)							
CPU speed	Clock speed	Multiplier	JP3A	JP3B	JP3C	JP5A	JP5B
200MHz	66MHz	3x	2 & 3	1 & 2	2 & 3	1 & 2	2 & 3
233MHz	66MHz	3.5x	2 & 3	1 & 2	2 & 3	1 & 2	1 & 2

Note: Pins designated should be in the closed position.

CPU SPEED SELECTION (IDT C6)							
CPU speed	Clock speed	Multiplier	JP3A	JP3B	JP3C	JP5A	JP5B
200MHz	66MHz	3x	2 & 3	1 & 2	2 & 3	1 & 2	2 & 3

Note: Pins designated should be in the closed position.

Continued on next page. . .

PC WAVE, INC.
M537

... continued from previous page

CPU SPEED SELECTION (INTEL)							
CPU speed	Clock speed	Multiplier	JP3A	JP3B	JP3C	JP5A	JP5B
75MHz	50MHz	1.5x	2 & 3	2 & 3	2 & 3	1 & 2	1 & 2
90MHz	60MHz	1.5x	2 & 3	2 & 3	1 & 2	1 & 2	1 & 2
100MHz	66MHz	1.5x	2 & 3	1 & 2	2 & 3	1 & 2	1 & 2
120MHz	60MHz	2x	2 & 3	2 & 3	1 & 2	2 & 3	1 & 2
133MHz	66MHz	2x	2 & 3	1 & 2	2 & 3	2 & 3	1 & 2
150MHz	60MHz	2.5x	2 & 3	2 & 3	1 & 2	2 & 3	2 & 3
166MHz	66MHz	2.5x	2 & 3	1 & 2	2 & 3	2 & 3	2 & 3
180MHz	60MHz	3x	2 & 3	2 & 3	1 & 2	1 & 2	2 & 3
200MHz	66MHz	3x	2 & 3	1 & 2	2 & 3	1 & 2	2 & 3

Note: Pins designated should be in the closed position.

CPU SPEED SELECTION (INTEL MMX)							
CPU speed	Clock speed	Multiplier	JP3A	JP3B	JP3C	JP5A	JP5B
166MHz	66MHz	2.5x	2 & 3	1 & 2	2 & 3	2 & 3	2 & 3
200MHz	66MHz	3x	2 & 3	1 & 2	2 & 3	1 & 2	2 & 3
233MHz	66MHz	3.5x	2 & 3	1 & 2	2 & 3	1 & 2	1 & 2

Note: Pins designated should be in the closed position.

CPU TYPE SELECTION		
Type	JP9A	JP9B
Single voltage CPU	Pins 2 & 3 closed	Pins 2 & 3 closed
Dual voltage CPU	Pins 1 & 2 closed	Pins 1 & 2 closed

CPU VOLTAGE SELECTION				
Voltage	JP6A	JP6B	JP6C	JP6D
2.5v	Open	Open	Open	Open
2.8v	Open	Open	Open	Closed
2.9v	Open	Open	Closed	Open
3.2v	Open	Closed	Open	Open
3.5v	Closed	Open	Open	Open