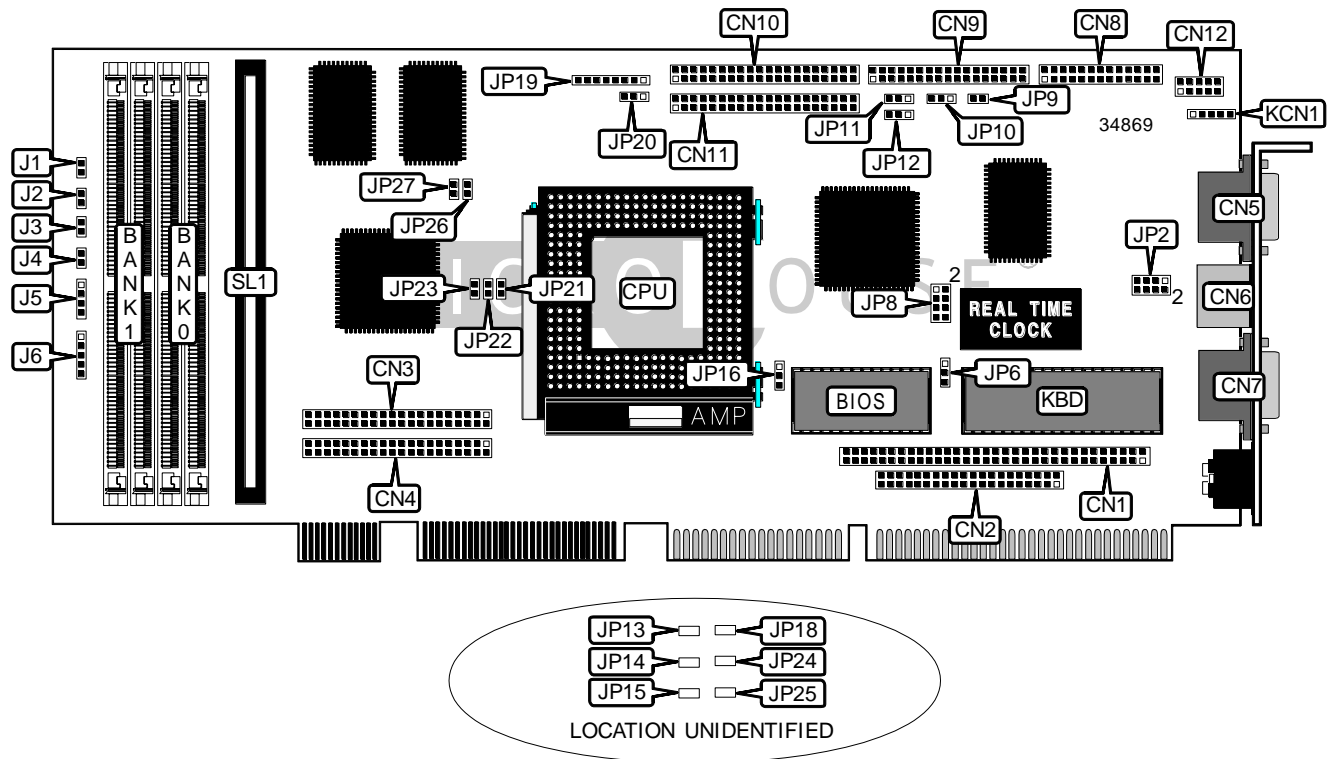


LANNER ELECTRONICS, INC.

AP-5200IF

Device Type	Mainboard
Processor	Pentium
Processor Speed	75/90/100/120/133/150/166/180/200MHz
Chip Set	Intel
Video Chip Set	Unidentified
Maximum Onboard Memory	128MB
Maximum Video Memory	Unidentified
Cache	512KB
BIOS	Award
Dimensions	Unidentified
I/O Options	Floppy drive interface, IDE interfaces (2), parallel port, PS/2 mouse port, serial ports (2), cache slot, PC/104 connectors (2), VGA interface, PCI piggyback connector
NPU Options	None



Continued on next page...

LANNER ELECTRONICS, INC.
 AP-5200IF

... continued from previous page

CONNECTIONS			
Purpose	Location	Purpose	Location
PC/104 connector	CN1	VGA interface	CN12
PC/104 connector	CN2	Reset switch	J1
PCI piggyback connector	CN3	Turbo switch	J2
PCI piggyback connector	CN4	IDE interface LED	J3
Serial port 1	CN5	Turbo LED	J4
PS/2 mouse port	CN6	Speaker	J5
Serial port 2	CN7	Power LED & keylock	J6
Parallel port	CN8	Green PC connector	JP9
Floppy drive interface	CN9	Power connector	JP19
IDE interface 1	CN10	Auxiliary keyboard connector	KCN1
IDE interface 2	CN11	Cache slot	SL1

USER CONFIGURABLE SETTINGS		
Function	Label	Position
í Flash BIOS voltage select 5v	JP6	Pins 1 & 2 closed
Flash BIOS voltage select 12v	JP6	Pins 2 & 3 closed
í IDE2 IRQ select IRQ15	JP10	Pins 1 & 2 closed
IDE2 IRQ select MIRQ0	JP10	Pins 2 & 3 closed
í Factory configured - do not alter	JP11	Unidentified
í Factory configured - do not alter	JP13	Unidentified
í Factory configured - do not alter	JP14	Unidentified
í Factory configured - do not alter	JP15	Unidentified
í Factory configured - do not alter	JP18	Unidentified
í Power good signal detect from board	JP20	Pins 1 & 2 closed
Power good signal detect from power supply	JP20	Pins 2 & 3 closed
í Factory configured - do not alter	JP22	Unidentified
í Factory configured - do not alter	JP24	Unidentified
í Factory configured - do not alter	JP25	Unidentified

SIMM CONFIGURATION		
Size	Bank 0	Bank 1
8MB	(2) 1M x 36	None
16MB	(2) 2M x 36	None
16MB	(2) 1M x 36	(2) 1M x 36
24MB	(2) 2M x 36	(2) 1M x 36
32MB	(2) 4M x 36	None
32MB	(2) 2M x 36	(2) 2M x 36

Continued on next page...

LANNER ELECTRONICS, INC.
 AP-5200IF

... continued from previous page

SIMM CONFIGURATION (CON'T)		
Size	Bank 0	Bank 1
40MB	(2) 4M x 36	(2) 1M x 36
48MB	(2) 4M x 36	(2) 2M x 36
64MB	(2) 8M x 36	None
64MB	(2) 4M x 36	(2) 4M x 36
72MB	(2) 8M x 36	(2) 1M x 36
80MB	(2) 8M x 36	(2) 2M x 36
96MB	(2) 8M x 36	(2) 4M x 36
128MB	(2) 8M x 36	(2) 8M x 36

CACHE CONFIGURATION	
Size	SL1
512KB	512KB module installed

CPU SPEED SELECTION							
CPU speed	Clock speed	Multiplier	JP12	JP21	JP23	JP26	JP27
75MHz	50MHz	1.5x	1 & 2	Open	Open	Open	Open
90MHz	60MHz	1.5x	2 & 3	Open	Open	Open	Closed
100MHz	66MHz	1.5x	2 & 3	Open	Open	Closed	Closed
120MHz	60MHz	2x	2 & 3	Open	Closed	Open	Closed
133MHz	66MHz	2x	2 & 3	Open	Closed	Closed	Closed
150MHz	60MHz	2.5x	2 & 3	Closed	Closed	Open	Closed
166MHz	66MHz	2.5x	2 & 3	Closed	Closed	Closed	Closed
180MHz	60MHz	3x	2 & 3	Closed	Open	Open	Closed
200MHz	66MHz	3x	2 & 3	Closed	Open	Closed	Closed

Note: Pins designated should be in the closed position.

SERIAL PORT 2 INTERRUPT SELECTION		
IRQ	COM port	JP8
IRQ10	3	Pins 5 & 7 closed
IRQ11	3	Pins 7 & 8 closed
IRQ10	4	Pins 5 & 6 closed
IRQ11	4	Pins 6 & 8 closed

WATCHDOG TIMER ACTIVE SELECTION	
Time out	JP2
.5 sec	Pins 1 & 2 closed
1 sec	Pins 3 & 4 closed
2 sec	Pins 5 & 6 closed
4 sec	Pins 7 & 8 closed

Continued on next page...

LANNER ELECTRONICS, INC.
AP-5200IF

... continued from previous page

WATCHDOG TIMER ACTIVE SELECTION	
Setting	JP16
í Reset system	Pins 1 & 2 closed
NMI system	Pins 2 & 3 closed
Disabled	Open