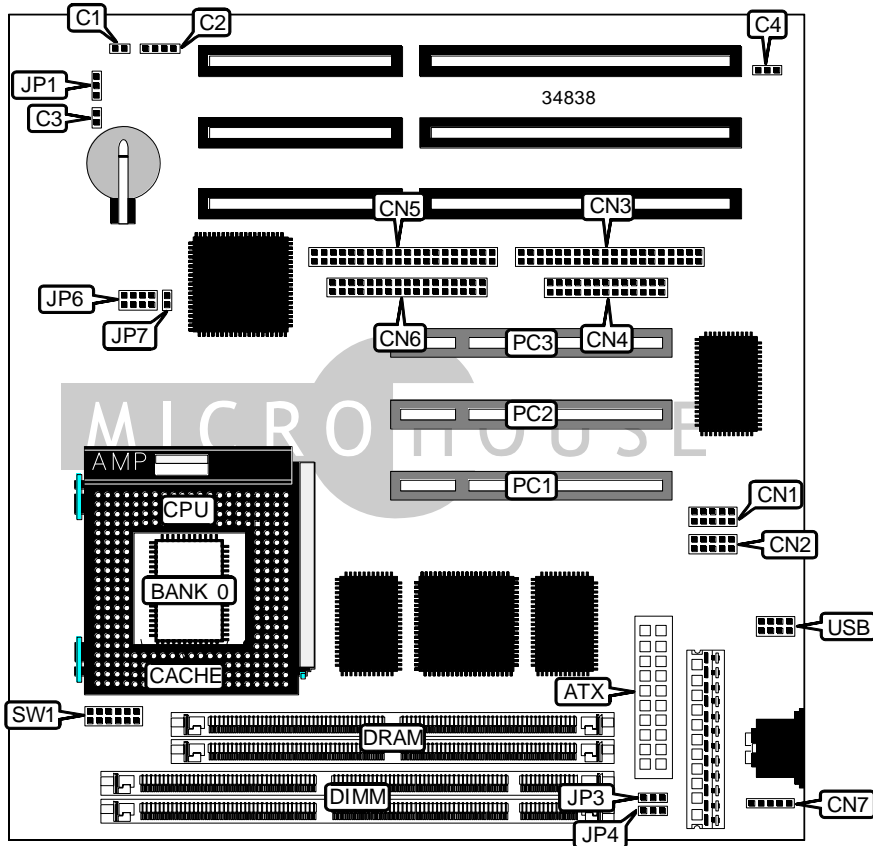


ACHITEC CORPORATION, LTD.
 ACHI-154

Device Type	Mainboard
Processor	CX 6X86L/CX 686MX/AM K5/AM K6/Pentium
Processor Speed	133/150/166/200/233MHz
Chip Set	VIA
Video Chip Set	None
Maximum Onboard Memory	512MB (EDO & SDRAM supported)
Maximum Video Memory	None
Cache	512KB
BIOS	Award
Dimensions	220mm x 190mm
I/O Options	32-bit PCI slots (3), floppy drive interface, IDE interfaces (2), parallel port, PS/2 mouse interface, serial ports (2), USB connector, ATX power connector
NPU Options	None



Continued on next page...

ACHITEC CORPORATION, LTD.
 ACHI - 154

... continued from previous page

CONNECTIONS			
Purpose	Location	Purpose	Location
ATX power connector	ATX	Parallel port	CN4
Soft off power supply	C1	IDE interface	CN5
IR connector	C2	Floppy drive interface	CN6
Serial port	CN1	PS/2 mouse interface	CN7
Serial port	CN2	32-bit PCI slots	PC1 – PC3
IDE interface	CN3	USB connector	USB
Note: Depending on board version, CN3 may be the parallel interface & CN4 may be the floppy drive interface.			

USER CONFIGURABLE SETTINGS		
Function	Label	Position
í Factory configured - do not alter	C3	Unidentified
í Factory configured - do not alter	C4	Unidentified
í CMOS normal operation	JP1	Pins 1 & 2 closed
CMOS memory clear	JP1	Pins 2 & 3 closed
í Factory configured - do not alter	JP3	Unidentified
í Factory configured - do not alter	JP4	Unidentified
Power supply select AT	JP7	Open
Power supply select ATX	JP7	Closed

SIMM CONFIGURATION	
Size	Bank 0
8MB	(2) 1M x 36
16MB	(2) 2M x 36
32MB	(2) 4M x 36
64MB	(2) 8M x 36
128MB	(2) 16M x 36
256MB	(2) 32M x 36
512MB	(2) 64M x 36
Note: Board accepts EDO memory.	

DIMM CONFIGURATION		
Size	Bank 0	Bank 1
8MB	(1) 1M x 64	None
16MB	(1) 2M x 64	None
16MB	(1) 1M x 64	(1) 1M x 64
24MB	(1) 2M x 64	(1) 1M x 64
32MB	(1) 4M x 64	None

Continued on next page...

ACHITEC CORPORATION, LTD.
 ACHI-154

... continued from previous page

DIMM CONFIGURATION (CON'T)		
Size	Bank 0	Bank 1
32MB	(1) 2M x 64	(1) 2M x 64
40MB	(1) 4M x 64	(1) 1M x 64
48MB	(1) 4M x 64	(1) 2M x 64
64MB	(1) 8M x 64	None
64MB	(1) 4M x 64	(1) 4M x 64
72MB	(1) 8M x 64	(1) 1M x 64
80MB	(1) 8M x 64	(1) 2M x 64
96MB	(1) 8M x 64	(1) 4M x 64
128MB	(1) 16M x 64	None
128MB	(1) 8M x 64	(1) 8M x 64
136MB	(1) 16M x 64	(1) 1M x 64
144MB	(1) 16M x 64	(1) 2M x 64
160MB	(1) 16M x 64	(1) 4M x 64
192MB	(1) 16M x 64	(1) 8M x 64
256MB	(1) 32M x 64	None
256MB	(1) 16M x 64	(1) 16M x 64
264MB	(1) 32M x 64	(1) 1M x 64
272MB	(1) 32M x 64	(1) 2M x 64
288MB	(1) 32M x 64	(1) 4M x 64
320MB	(1) 32M x 64	(1) 8M x 64
384MB	(1) 32M x 64	(1) 16M x 64
512MB	(1) 32M x 64	(1) 32M x 64

Note: Board accepts SDRAM memory.

CACHE CONFIGURATION	
Size	Bank 0
512KB	(1) 64K x 64

CPU SPEED SELECTION (CX 6X86L)								
CPU speed	Clock speed	Multiplier	SW1/1	SW1/2	SW1/3	SW1/4	SW1/5	SW1/6
133MHz	60MHz	2x	Open	Open	Closed	Closed	Closed	Closed
166MHz	66MHz	2x	Open	Open	Closed	Closed	Open	Closed
200MHz	75MHz	2x	Open	Open	Closed	Open	Closed	Open

Continued on next page...

ACHITEC CORPORATION, LTD.
 ACHI-154

... continued from previous page

CPU SPEED SELECTION (CX 6X86MX)								
CPU speed	Clock speed	Multiplier	SW1/1	SW1/2	SW1/3	SW1/4	SW1/5	SW1/6
166MHz	66MHz	2x	Open	Open	Closed	Closed	Open	Closed
200MHz	66MHz	2.5x	Open	Closed	Closed	Closed	Open	Closed
233MHz	66MHz	3x	Open	Closed	Open	Closed	Open	Closed
266MHz	66MHz	3.5x	Open	Open	Open	Closed	Open	Closed

CPU SPEED SELECTION (AM K5)								
CPU speed	Clock speed	Multiplier	SW1/1	SW1/2	SW1/3	SW1/4	SW1/5	SW1/6
133MHz	66MHz	2x	Open	Open	Closed	Closed	Open	Closed
166MHz	66MHz	2.5x	Open	Closed	Closed	Closed	Open	Closed
200MHz	66MHz	3x	Open	Closed	Open	Closed	Open	Closed

CPU SPEED SELECTION (AM K6)								
CPU speed	Clock speed	Multiplier	SW1/1	SW1/2	SW1/3	SW1/4	SW1/5	SW1/6
166MHz	66MHz	2.5x	Open	Closed	Closed	Closed	Open	Closed
200MHz	66MHz	3x	Open	Closed	Open	Closed	Open	Closed
233MHz	66MHz	3.5x	Open	Open	Open	Closed	Open	Closed

CPU SPEED SELECTION (INTEL)								
CPU speed	Clock speed	Multiplier	SW1/1	SW1/2	SW1/3	SW1/4	SW1/5	SW1/6
133MHz	66MHz	2x	Open	Open	Closed	Closed	Open	Closed
150MHz	60MHz	2.5x	Open	Closed	Closed	Closed	Closed	Open
166MHz	66MHz	2.5x	Open	Closed	Closed	Closed	Open	Closed
200MHz	66MHz	3x	Open	Closed	Open	Closed	Open	Closed

CPU SPEED SELECTION (INTEL MMX)								
CPU speed	Clock speed	Multiplier	SW1/1	SW1/2	SW1/3	SW1/4	SW1/5	SW1/6
166MHz	66MHz	2.5x	Open	Closed	Closed	Closed	Open	Closed
200MHz	66MHz	3x	Open	Closed	Open	Closed	Open	Closed
233MHz	66MHz	3.5x	Open	Open	Open	Closed	Open	Closed

Continued on next page. . .

ACHITEC CORPORATION, LTD.
ACHI - 154

... continued from previous page

CPU VOLTAGE SELECTION				
Voltage	JP6/1	JP6/2	JP6/3	JP6/4
2.0	Open	Open	Open	Open
2.1	Closed	Open	Open	Open
2.2	Open	Closed	Open	Open
2.3	Closed	Closed	Open	Open
2.4	Open	Open	Closed	Open
2.5	Closed	Open	Closed	Open
2.6	Open	Closed	Closed	Open
2.7	Closed	Closed	Closed	Open
2.8	Open	Open	Open	Closed
2.9	Closed	Open	Open	Closed
3.0	Open	Closed	Open	Closed
3.1	Closed	Closed	Open	Closed
3.2	Open	Open	Closed	Closed
3.3	Closed	Open	Closed	Closed
3.4	Open	Closed	Closed	Closed
3.5	Closed	Closed	Closed	Closed