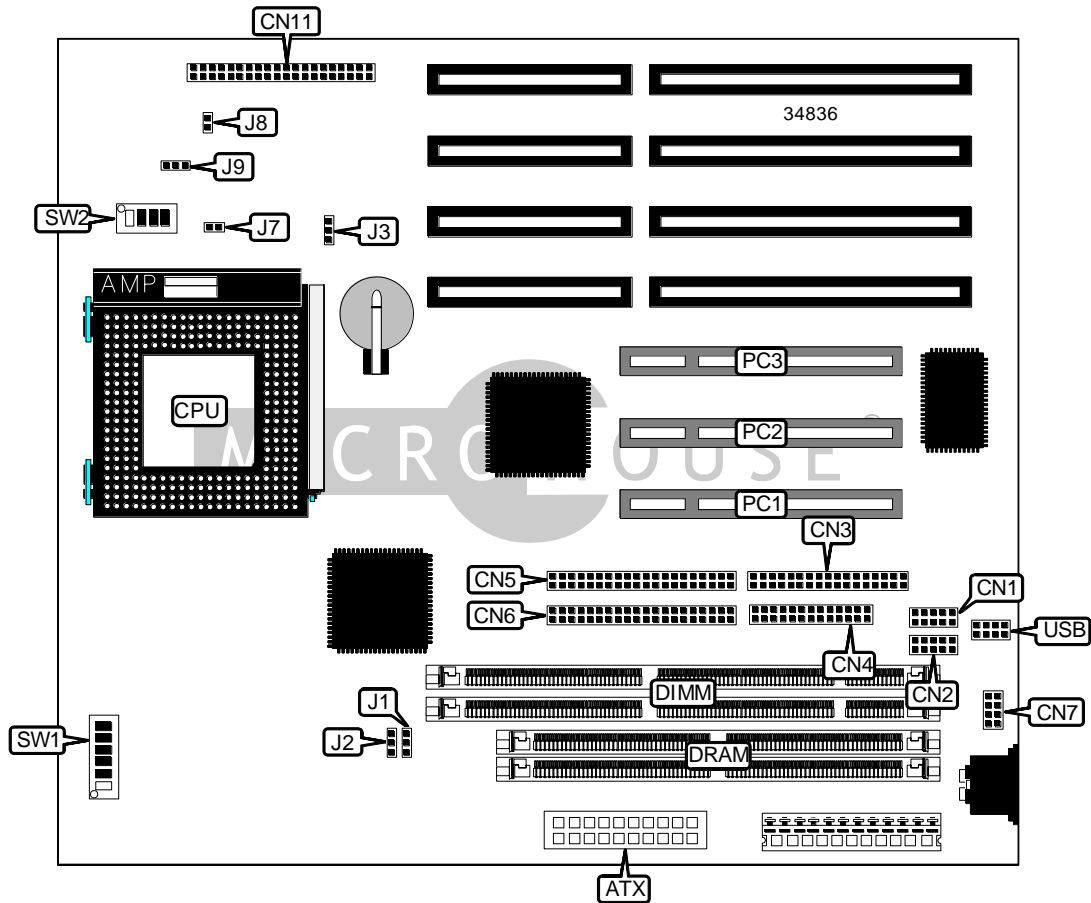


ACHITEC CORPORATION, LTD.

ACHI-150

Device Type	Mainboard
Processor	CX 6X86/IBM 6X86/CX 686MX/IBM 6X86MX/IDT/AM K5/ AM K6/Pentium
Processor Speed	90/100/120/133/150/166/180/200/233/266/300/333MHz
Chip Set	Intel
Video Chip Set	None
Maximum Onboard Memory	256MB (EDO & SDRAM supported)
Maximum Video Memory	None
Cache	256/512KB
BIOS	Award
Dimensions	250mm x 220mm
I/O Options	32-bit PCI slots (3), floppy drive interface, IDE interfaces (2), parallel port, PS/2 mouse interface, serial ports (2), USB connector, ATX power connector
NPU Options	None



Continued on next page . . .

ACHITEC CORPORATION, LTD.
 ACHI - 150

... continued from previous page

CONNECTIONS			
Purpose	Location	Purpose	Location
ATX power connector	ATX	IDE interface 2	CN5
Serial port 2	CN1	IDE interface 1	CN6
Serial port 1	CN2	PS/2 mouse interface	CN7
Floppy drive interface	CN3	32-bit PCI slots	PC1 – PC3
Parallel port	CN4	USB connector	USB

USER CONFIGURABLE SETTINGS		
Function	Label	Position
í Factory configured - do not alter	CN11	Unidentified
í CMOS memory normal operation	J3	Pins 1 & 2 closed
CMOS memory clear	J3	Pins 2 & 3 closed
í Factory configured - do not alter	J7	Unidentified
í Factory configured - do not alter	J8	Unidentified
í Factory configured - do not alter	J9	Unidentified

SIMM CONFIGURATION	
Size	Bank 0
8MB	(2) 1M x 36
16MB	(2) 2M x 36
32MB	(2) 4M x 36
64MB	(2) 8M x 36
128MB	(2) 16M x 36
256MB	(2) 32M x 36

Note: Board accepts EDO memory.

DIMM CONFIGURATION		
Size	Bank 0	Bank 1
8MB	(1) 1M x 64	None
16MB	(1) 2M x 64	None
16MB	(1) 1M x 64	(1) 1M x 64
24MB	(1) 2M x 64	(1) 1M x 64
32MB	(1) 4M x 64	None
32MB	(1) 2M x 64	(1) 2M x 64
40MB	(1) 4M x 64	(1) 1M x 64
48MB	(1) 4M x 64	(1) 2M x 64
64MB	(1) 8M x 64	None

Continued on next page...

ACHITEC CORPORATION, LTD.
 ACHI-150

... continued from previous page

SIMM CONFIGURATION (CON'T)		
Size	Bank 0	Bank 1
64MB	(1) 4M x 64	(1) 4M x 64
72MB	(1) 8M x 64	(1) 1M x 64
80MB	(1) 8M x 64	(1) 2M x 64
96MB	(1) 8M x 64	(1) 4M x 64
128MB	(1) 16M x 64	None
128MB	(1) 8M x 64	(1) 8M x 64
136MB	(1) 16M x 64	(1) 1M x 64
144MB	(1) 16M x 64	(1) 2M x 64
160MB	(1) 16M x 64	(1) 4M x 64
192MB	(1) 16M x 64	(1) 8M x 64
256MB	(1) 16M x 64	(1) 16M x 64

Note: Board accepts SDRAM memory.

DIMM VOLTAGE CONFIGURATION		
Voltage	J1	J2
3.3v	Pins 2 & 3 closed	Pins 2 & 3 closed
5v	Pins 1 & 2 closed	Pins 1 & 2 closed

CACHE CONFIGURATION
 Note: 256/512KB cache is factory installed and is not configurable. The location is unidentified.

CPU SPEED SELECTION (CX 6X86)								
CPU speed	Clock speed	Multiplier	SW1/1	SW1/2	SW1/3	SW1/4	SW1/5	SW1/6
150MHz	60MHz	2x	On	Off	Off	On	Off	Off
166MHz	66MHz	2x	On	Off	Off	Off	Off	Off
166MHz	60MHz	2.5x	On	On	Off	On	Off	Off
200MHz	75MHz	2x	On	Off	Off	Off	On	Off

CPU SPEED SELECTION (IBM 6X86)								
CPU speed	Clock speed	Multiplier	SW1/1	SW1/2	SW1/3	SW1/4	SW1/5	SW1/6
150MHz	60MHz	2x	On	Off	Off	On	Off	Off
166MHz	66MHz	2x	On	Off	Off	Off	Off	Off
166MHz	60MHz	2.5x	On	On	Off	On	Off	Off
200MHz	75MHz	2x	On	Off	Off	Off	On	Off

Continued on next page...

ACHITEC CORPORATION, LTD.
 ACHI-150

... continued from previous page

CPU SPEED SELECTION (CX 6X86MX)								
CPU speed	Clock speed	Multiplier	SW1/1	SW1/2	SW1/3	SW1/4	SW1/5	SW1/6
233MHz	75MHz	2.5x	On	On	Off	Off	On	Off
233MHz	66MHz	3x	Off	On	Off	Off	Off	Off
266MHz	75MHz	3x	Off	On	Off	Off	On	Off
266MHz	66MHz	3.5x	Off	Off	Off	Off	Off	Off

CPU SPEED SELECTION (IBM 6X86MX)								
CPU speed	Clock speed	Multiplier	SW1/1	SW1/2	SW1/3	SW1/4	SW1/5	SW1/6
233MHz	75MHz	2.5x	On	On	Off	Off	On	Off
233MHz	66MHz	3x	Off	On	Off	Off	Off	Off
266MHz	75MHz	3x	Off	On	Off	Off	On	Off
266MHz	66MHz	3.5x	Off	Off	Off	Off	Off	Off

CPU SPEED SELECTION (IDT)								
CPU speed	Clock speed	Multiplier	SW1/1	SW1/2	SW1/3	SW1/4	SW1/5	SW1/6
200MHz	66MHz	3x	Off	On	Off	Off	Off	Off

CPU SPEED SELECTION (AM K5)								
CPU speed	Clock speed	Multiplier	SW1/1	SW1/2	SW1/3	SW1/4	SW1/5	SW1/6
90MHz	60MHz	1.5x	Off	Off	Off	On	Off	Off
100MHz	66MHz	1.5x	Off	Off	Off	Off	Off	Off
120MHz	60MHz	2x	On	Off	Off	On	Off	Off
133MHz	66MHz	2x	On	Off	Off	Off	Off	Off
150MHz	60MHz	2.5x	On	On	Off	On	Off	Off
166MHz	66MHz	2.5x	On	On	Off	Off	Off	Off

CPU SPEED SELECTION (AM K6)								
CPU speed	Clock speed	Multiplier	SW1/1	SW1/2	SW1/3	SW1/4	SW1/5	SW1/6
166MHz	66MHz	2.5x	On	On	Off	Off	Off	Off
200MHz	66MHz	3x	Off	On	Off	Off	Off	Off
233MHz	66MHz	3.5x	Off	Off	Off	Off	Off	Off
266MHz	66MHz	4x	On	Off	On	Off	Off	Off
300MHz	66MHz	4.5x	On	On	On	Off	Off	Off
333MHz	66MHz	5x	Off	On	On	Off	Off	Off

Continued on next page. . .

ACHITEC CORPORATION, LTD.
 ACHI - 150

... continued from previous page

CPU SPEED SELECTION (INTEL)								
CPU speed	Clock speed	Multiplier	SW1/1	SW1/2	SW1/3	SW1/4	SW1/5	SW1/6
90MHz	60MHz	1.5x	Off	Off	Off	On	Off	Off
100MHz	66MHz	1.5x	Off	Off	Off	Off	Off	Off
120MHz	60MHz	2x	On	Off	Off	On	Off	Off
133MHz	66MHz	2x	On	Off	Off	Off	Off	Off
150MHz	60MHz	2.5x	On	On	Off	On	Off	Off
166MHz	66MHz	2.5x	On	On	Off	Off	Off	Off
200MHz	66MHz	3x	Off	On	Off	Off	Off	Off

CPU SPEED SELECTION (INTEL MMX)								
CPU speed	Clock speed	Multiplier	SW1/1	SW1/2	SW1/3	SW1/4	SW1/5	SW1/6
200MHz	66MHz	3x	Off	On	Off	Off	Off	Off
233MHz	66MHz	3.5x	Off	Off	Off	Off	Off	Off
266MHz	66MHz	4x	On	Off	On	Off	Off	Off
300MHz	66MHz	4.5x	On	On	On	Off	Off	Off
333MHz	66MHz	5x	Off	On	On	Off	Off	Off

CPU VOLTAGE SELECTION				
Voltage	SW2/1	SW2/2	SW2/3	SW2/4
2.0	Off	Off	Off	Off
2.1	On	Off	Off	Off
2.2	Off	On	Off	Off
2.3	On	On	Off	Off
2.4	Off	Off	On	Off
2.5	On	Off	On	Off
2.6	Off	On	On	Off
2.7	On	On	On	Off
2.8	Off	Off	Off	On
2.9	On	Off	Off	On
3.0	Off	On	Off	On
3.1	On	On	Off	On
3.2	Off	Off	On	On
3.3	On	Off	On	On
3.4	Off	On	On	On
3.5	On	On	On	On