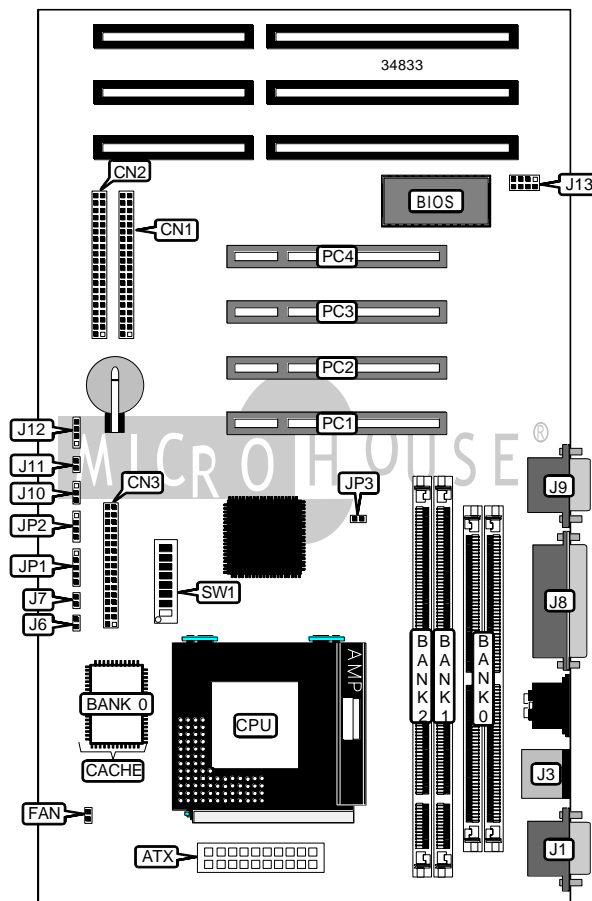


# GIGA-BYTE TECHNOLOGY CO., LTD.

## GA - 5 8 6 S T X

<b>Device Type</b>	Mainboard
<b>Processor</b>	CX 6X86/IBM 6X86/CX 6X86L/IBM 6X86L/CX 686MX/IBM 6X86MX/ AM K5/AM K6/Pentium
<b>Processor Speed</b>	90/100/120/133/150/166/180/200/233MHz
<b>Chip Set</b>	SIS
<b>Video Chip Set</b>	None
<b>Maximum Onboard Memory</b>	384MB (EDO & supported)
<b>Maximum Video Memory</b>	None
<b>Cache</b>	512KB
<b>BIOS</b>	Award
<b>Dimensions</b>	305mm x 244mm
<b>I/O Options</b>	32-bit PCI slots (2), floppy drive interface, green PC connector, IDE interfaces (2), parallel port, PS/2 mouse port, serial ports (2), IR connector, USB connector, ATX power connector
<b>NPU Options</b>	None



Continued on next page. . .

GIGA-BYTE TECHNOLOGY CO., LTD.  
GA - 586STX

... continued from previous page

CONNECTIONS			
Purpose	Location	Purpose	Location
ATX power connector	ATX	Parallel port	J8
IDE interface 2	CN1	Serial port 2	J9
IDE interface 1	CN2	Power LED	J10
Floppy drive interface	CN3	Reset switch	J11
CPU fan power	FAN	Speaker	J12
Serial port 1	J1	USB connector	J13
PS/2 mouse port	J3	IR connector	JP1
Soft off power supply 1	J6	IDE interface LED	JP2
Soft off power supply 2	J7	32-bit PCI slots	PC1 – PC4

DIMM/ SIMM CONFIGURATION			
Size	Bank 0	Bank 1	Bank 2
8MB	(2) 1M x 36	None	None
8MB	None	(1) 1M x 64	None
16MB	(2) 2M x 36	None	None
16MB	None	(1) 2M x 64	None
16MB	None	(1) 1M x 64	(1) 1M x 64
24MB	(2) 1M x 36	(1) 1M x 64	(1) 1M x 64
24MB	None	(1) 1M x 64	(1) 2M x 64
24MB	(2) 2M x 36	(1) 1M x 64	None
32MB	None	(1) 2M x 64	(1) 2M x 64
32MB	(2) 1M x 36	(1) 1M x 64	(1) 2M x 64
32MB	(2) 2M x 36	(1) 1M x 64	(1) 1M x 64
32MB	(2) 4M x 36	None	None
32MB	None	(1) 4M x 64	None
32MB	(2) 2M x 36	(1) 2M x 64	None
40MB	(2) 1M x 36	(1) 4M x 64	None
40MB	(2) 1M x 36	(1) 2M x 64	(1) 2M x 64
40MB	(2) 2M x 36	(1) 1M x 64	(1) 2M x 64
40MB	None	(1) 1M x 64	(1) 4M x 64
40MB	(2) 4M x 36	(1) 1M x 64	None
48MB	None	(1) 2M x 64	(1) 4M x 64
48MB	(2) 1M x 36	(1) 1M x 64	(1) 4M x 64
48MB	(2) 2M x 36	(1) 2M x 64	(1) 2M x 64
48MB	(2) 4M x 36	(1) 1M x 64	(1) 1M x 64
48MB	(2) 2M x 36	(1) 4M x 64	None
48MB	(2) 4M x 36	(1) 2M x 64	None

Continued on next page...

GIGA-BYTE TECHNOLOGY CO., LTD.  
GA - 586STX

... continued from previous page

DIMM/ SIMM CONFIGURATION (CON'T)			
Size	Bank 0	Bank 1	Bank 2
56MB	(2) 1M x 36	(1) 2M x 64	(1) 4M x 64
56MB	(2) 2M x 36	(1) 1M x 64	(1) 4M x 64
56MB	(2) 4M x 36	(1) 2M x 64	(1) 1M x 64
64MB	None	(1) 4M x 64	(1) 4M x 64
64MB	(2) 2M x 36	(1) 2M x 64	(1) 4M x 64
64MB	(2) 4M x 36	(1) 2M x 64	(1) 2M x 64
64MB	(2) 8M x 36	None	None
64MB	None	(1) 8M x 64	None
64MB	(2) 4M x 36	(1) 4M x 64	None
72MB	(2) 8M x 36	(1) 1M x 64	None
72MB	(2) 1M x 36	(1) 4M x 64	(1) 4M x 64
72MB	(2) 4M x 36	(1) 1M x 64	(1) 4M x 64
72MB	None	(1) 1M x 64	(1) 8M x 64
80MB	None	(1) 2M x 64	(1) 8M x 64
80MB	(2) 2M x 36	(1) 4M x 64	(1) 4M x 64
80MB	(2) 4M x 36	(1) 2M x 64	(1) 4M x 64
80MB	(2) 8M x 36	(1) 1M x 64	(1) 1M x 64
80MB	(2) 8M x 36	(1) 2M x 64	None
88MB	(2) 8M x 36	(1) 1M x 64	(1) 2M x 64
96MB	None	(1) 4M x 64	(1) 8M x 64
96MB	(2) 4M x 36	(1) 4M x 64	(1) 4M x 64
96MB	(2) 8M x 36	(1) 2M x 64	(1) 2M x 64
96MB	(2) 8M x 36	(1) 4M x 64	None
104MB	(2) 8M x 36	(1) 1M x 64	(1) 4M x 64
112MB	(2) 8M x 36	(1) 2M x 64	(1) 4M x 64
128MB	(2) 16M x 36	None	None
128MB	(2) 8M x 36	(1) 4M x 64	(1) 4M x 64
128MB	None	(1) 8M x 64	(1) 8M x 64
136MB	(2) 16M x 36	(1) 1M x 64	None
144MB	(2) 16M x 36	(1) 2M x 64	None
144MB	(2) 16M x 36	(1) 1M x 64	(1) 1M x 64
152MB	(2) 16M x 36	(1) 1M x 64	(1) 2M x 64
160MB	(2) 16M x 36	(1) 2M x 64	(1) 2M x 64
160MB	(2) 16M x 36	(1) 4M x 64	None
168MB	(2) 16M x 36	(1) 1M x 64	(1) 4M x 64
176MB	(2) 16M x 36	(1) 2M x 64	(1) 4M x 64

Continued on next page. . .

GIGA-BYTE TECHNOLOGY CO., LTD.  
GA - 586STX

... continued from previous page

DIMM/ SIMM CONFIGURATION (CON'T)			
Size	Bank 0	Bank 1	Bank 2
192MB	(2) 16M x 36	(1) 4M x 64	(1) 4M x 64
200MB	(2) 16M x 36	(1) 8M x 64	(1) 1M x 64
208MB	(2) 16M x 36	(1) 8M x 64	(1) 2M x 64
224MB	(2) 16M x 36	(1) 8M x 64	(1) 4M x 64
256MB	(2) 16M x 36	(1) 8M x 64	(1) 8M x 64
272MB	(2) 32M x 36	(1) 1M x 64	(1) 1M x 64
280MB	(2) 32M x 36	(1) 1M x 64	(1) 2M x 64
288MB	(2) 32M x 36	(1) 2M x 64	(1) 2M x 64
296MB	(2) 32M x 36	(1) 1M x 64	(1) 4M x 64
304MB	(2) 32M x 36	(1) 2M x 64	(1) 4M x 64
320MB	(2) 32M x 36	(1) 4M x 64	(1) 4M x 64
328MB	(2) 32M x 36	(1) 1M x 64	(1) 8M x 64
336MB	(2) 32M x 36	(1) 2M x 64	(1) 8M x 64
352MB	(2) 32M x 36	(1) 4M x 64	(1) 8M x 64
384MB	(2) 32M x 36	(1) 8M x 64	(1) 8M x 64

CACHE CONFIGURATION	
Size	Bank 0
512KB	(1) 64K x 64

CPU SPEED SELECTION (CX 6X86)							
CPU speed	Clock speed	Multiplier	JP3	SW1/1	SW1/2	SW1/3	SW1/8
150MHz	60MHz	2x	Open	On	On	Off	Off
166MHz	66MHz	2x	Open	Off	On	Off	Off
200MHz	75MHz	2x	Closed	Off	On	Off	Off

CPU SPEED SELECTION (IBM 6X86)							
CPU speed	Clock speed	Multiplier	JP3	SW1/1	SW1/2	SW1/3	SW1/8
150MHz	60MHz	2x	Open	On	On	Off	Off
166MHz	66MHz	2x	Open	Off	On	Off	Off
200MHz	75MHz	2x	Closed	Off	On	Off	Off

CPU SPEED SELECTION (CX 6X86L)							
CPU speed	Clock speed	Multiplier	JP3	SW1/1	SW1/2	SW1/3	SW1/8
150MHz	60MHz	2x	Open	On	On	Off	Off
166MHz	66MHz	2x	Open	Off	On	Off	Off
200MHz	75MHz	2x	Closed	Off	On	Off	Off

Continued on next page. . .

GIGA-BYTE TECHNOLOGY CO., LTD.  
GA - 586STX

... continued from previous page

CPU SPEED SELECTION (IBM 6X86L)							
CPU speed	Clock speed	Multiplier	JP3	SW1/1	SW1/2	SW1/3	SW1/8
150MHz	60MHz	2x	Open	On	On	Off	Off
166MHz	66MHz	2x	Open	Off	On	Off	Off
200MHz	75MHz	2x	Closed	Off	On	Off	Off

CPU SPEED SELECTION (CX 6X86MX)							
CPU speed	Clock speed	Multiplier	JP3	SW1/1	SW1/2	SW1/3	SW1/8
166MHz	60MHz	2.5x	Open	On	On	On	Off
200MHz	66MHz	2.5x	Open	Off	On	On	Off
200MHz	75MHz	2x	Closed	Off	On	Off	Off
233MHz	66MHz	3x	Open	Off	Off	On	Off
233MHz	75MHz	2.5x	Closed	Off	On	On	Off

CPU SPEED SELECTION (IBM 6X86MX)							
CPU speed	Clock speed	Multiplier	JP3	SW1/1	SW1/2	SW1/3	SW1/8
166MHz	60MHz	2.5x	Open	On	On	On	Off
200MHz	66MHz	2.5x	Open	Off	On	On	Off
200MHz	75MHz	2x	Closed	Off	On	Off	Off
233MHz	66MHz	3x	Open	Off	Off	On	Off
233MHz	75MHz	2.5x	Closed	Off	On	On	Off

CPU SPEED SELECTION (AM K5)							
CPU speed	Clock speed	Multiplier	JP3	SW1/1	SW1/2	SW1/3	SW1/8
133MHz	66MHz	2x	Open	Off	On	Off	Off
166MHz	66MHz	2.5x	Open	Off	On	On	Off

CPU SPEED SELECTION (AM K6)							
CPU speed	Clock speed	Multiplier	JP3	SW1/1	SW1/2	SW1/3	SW1/8
166MHz	66MHz	2.5x	Open	Off	On	On	Off
180MHz	60MHz	3x	Open	On	Off	On	Off
200MHz	66MHz	3x	Open	Off	Off	On	Off
233MHz	66MHz	3.5x	Open	Off	Off	Off	Off

Continued on next page...

GIGA-BYTE TECHNOLOGY CO., LTD.  
GA - 586STX

... continued from previous page

CPU SPEED SELECTION (INTEL)							
CPU speed	Clock speed	Multiplier	JP3	SW1/1	SW1/2	SW1/3	SW1/8
90MHz	60MHz	1.5x	Open	On	Off	Off	Off
100MHz	66MHz	1.5x	Open	Off	Off	Off	Off
120MHz	60MHz	2x	Open	On	On	Off	Off
133MHz	66MHz	2x	Open	Off	On	Off	Off
150MHz	60MHz	2.5x	Open	On	On	On	Off
166MHz	66MHz	2.5x	Open	Off	On	On	Off
180MHz	60MHz	3x	Open	On	Off	On	Off
200MHz	66MHz	3x	Open	Off	Off	On	Off

CPU SPEED SELECTION (INTEL MMX)							
CPU speed	Clock speed	Multiplier	JP3	SW1/1	SW1/2	SW1/3	SW1/8
150MHz	60MHz	2.5x	Open	On	On	On	Off
166MHz	66MHz	2.5x	Open	Off	On	On	Off
200MHz	66MHz	3x	Open	Off	Off	On	Off
233MHz	66MHz	3.5x	Open	Off	Off	Off	Off

CPU VOLTAGE SELECTION				
Voltage	SW1/4	SW1/5	SW1/6	SW1/7
Auto	Off	Off	Off	On
2.0	Off	Off	Off	Off
2.1	Off	Off	On	Off
2.2	Off	On	Off	Off
2.3	Off	On	On	Off
2.4	On	Off	Off	Off
2.5	On	Off	On	Off
2.6	On	On	Off	Off
2.7	On	On	On	Off
2.8	Off	Off	Off	On
2.9	Off	Off	On	On
3.0	Off	On	Off	On
3.1	Off	On	On	On
3.2	On	Off	Off	On
3.3	On	Off	On	On
3.4	On	On	Off	On
3.5	On	On	On	On