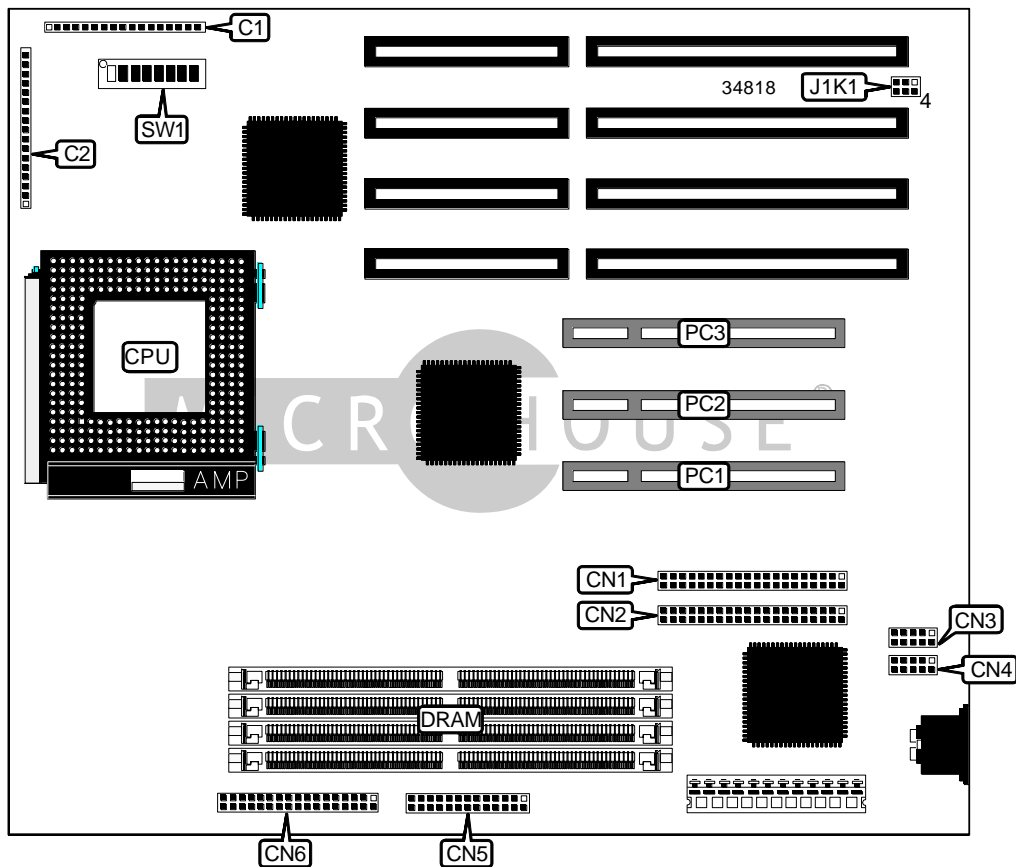


# INTEL CORPORATION ADVANCED/ZP

<b>Device Type</b>	Mainboard
<b>Processor</b>	Pentium
<b>Processor Speed</b>	75/90/100/120/133MHz
<b>Chip Set</b>	Intel
<b>Video Chip Set</b>	Unidentified
<b>Maximum Onboard Memory</b>	128MB (EDO supported)
<b>Maximum Video Memory</b>	None
<b>Cache</b>	Unidentified
<b>BIOS</b>	Unidentified
<b>Dimensions</b>	254mm x 218mm
<b>I/O Options</b>	32-bit PCI slots (3), floppy drive interface, green PC connector, IDE interfaces (2), parallel port, serial ports (2), IR connector
<b>NPU Options</b>	None



Continued on next page. . .

# INTEL CORPORATION ADVANCED/ZP

... continued from previous page

CONNECTIONS			
Purpose	Location	Purpose	Location
Turbo LED	C1/pins 1 & 2	IDE interface 2	CN1
IDE interface LED	C1/pins 4 - 8	IDE interface 1	CN2
Power LED & keylock	C1/pins 10 - 14	Serial port 2	CN3
Reset switch	C1/pins 16 & 17	Serial port 1	CN4
Green PC connector	C2/pins 1 & 2	Parallel port	CN5
IR connector	C2/pins 4 - 8	Floppy drive interface	CN6
Chassis fan power	C2/pins 10 - 13	32-bit PCI slots	PC1 - PC3
Speaker	C2/pins 14 - 17		

USER CONFIGURABLE SETTINGS		
Function	Label	Position
í BIOS normal operation	J1K1	Pins 1 & 2 closed
BIOS recovery mode	J1K1	Pins 2 & 3 closed
ISA bus speed select 1/3	SW1/1	Off
ISA bus speed select 1/4	SW1/1	On
í Password normal operation	SW1/3	Off
Password clear	SW1/3	On
í CMOS memory normal operation	SW1/4	Off
CMOS memory clear	SW1/4	On
í Setup access enabled	SW1/5	Off
Setup access disabled	SW1/5	On

SIMM CONFIGURATION		
Size	Bank 0	Bank 1
8MB	(2) 1M x 36	None
16MB	(2) 2M x 36	None
16MB	(2) 1M x 36	(2) 1M x 36
24MB	(2) 2M x 36	(2) 1M x 36
32MB	(2) 4M x 36	None
32MB	(2) 2M x 36	(2) 2M x 36
40MB	(2) 4M x 36	(2) 1M x 36
48MB	(2) 4M x 36	(2) 2M x 36
64MB	(2) 8M x 36	None
64MB	(2) 4M x 36	(2) 4M x 36
72MB	(2) 8M x 36	(2) 1M x 36
80MB	(2) 8M x 36	(2) 2M x 36
96MB	(2) 8M x 36	(2) 4M x 36
128MB	(2) 8M x 36	(2) 8M x 36

Note: Board accepts EDO memory.

Continued on next page. . .

INTEL CORPORATION  
ADVANCED/ZP

... continued from previous page

CACHE CONFIGURATION	
Note: The size and location of the cache is unidentified.	

CPU SPEED SELECTION					
CPU speed	Clock speed	Multiplier	SW1/6	SW1/7	SW1/8
75MHz	50MHz	1.5x	Off	Off	Off
90MHz	60MHz	1.5x	Off	On	Off
100MHz	66MHz	1.5x	Off	Off	On
120MHz	60MHz	2x	On	On	Off
133MHz	66MHz	2x	On	Off	On

CPU TYPE SELECTION	
Type	SW1/2
í VR	Off
VRE	On