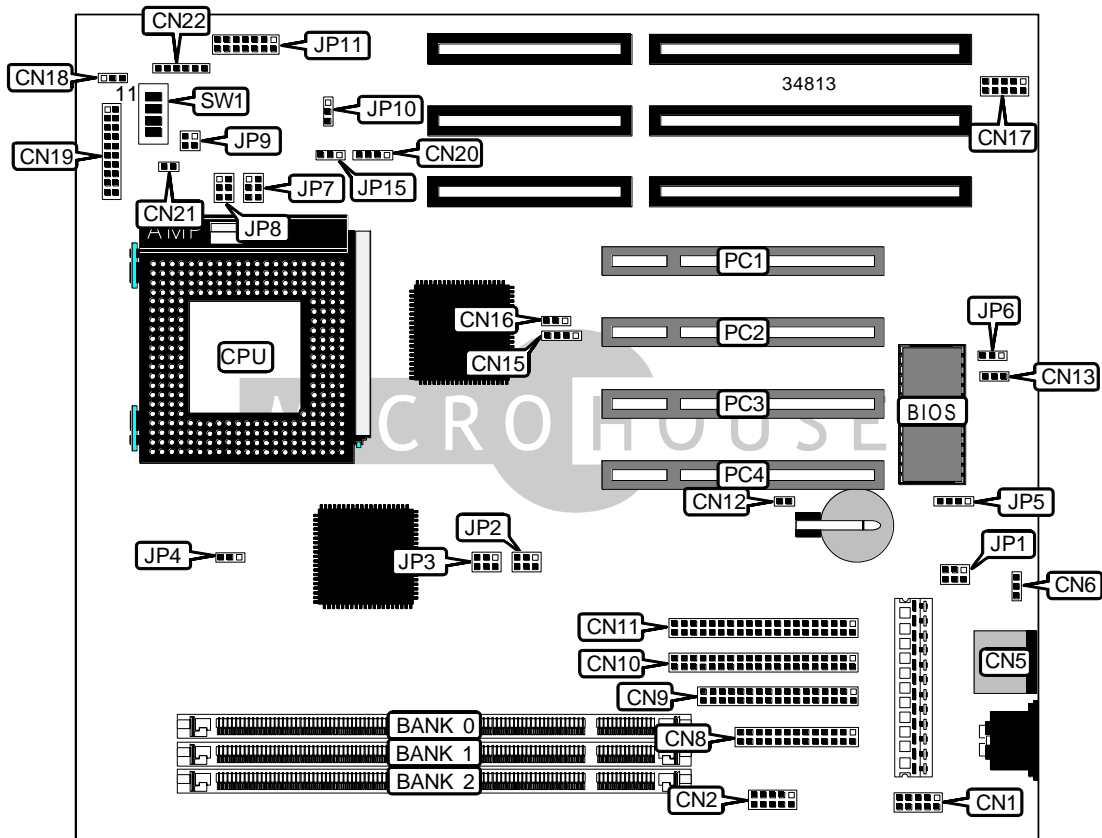


ACER, INC.
V 5 8

Device Type	Mainboard
Processor	CX 6X86L/CX M2/AM K6/Pentium
Processor Speed	Unidentified
Chip Set	Unidentified
Video Chip Set	None
Maximum Onboard Memory	256MB (SDRAM supported)
Maximum Video Memory	None
Cache	512KB
BIOS	Unidentified
Dimensions	254mm x 218mm
I/O Options	32-bit PCI slots (4), floppy drive interface, green PC connector, IDE interfaces (2), parallel port, PS/2 mouse port, serial ports (2), USB connector
NPU Options	None



Continued on next page . . .

... continued from previous page

CONNECTIONS			
Purpose	Location	Purpose	Location
Serial port 1	CN1	Power button	CN18
Serial port 2	CN2	Keylock	CN19/pins 1 – 5
PS/2 mouse port	CN5	Speaker	CN19/pins 7 – 10
Green PC connector	CN6	Green PC LED	CN19/pins 12 & 13
Parallel port	CN8	Power LED	CN19/pins 15 - 17
Floppy drive interface	CN9	Reset switch	CN19/pins 19 & 20
IDE interface 2	CN10	IDE interface LED	CN20
IDE interface 1	CN11	CPU fan power	CN21
Wake on LAN connector	CN13	CPU fan/hardware monitor	CN22
Wake on modem connector	CN16	32-bit PCI slots	PC1 – PC4
USB connector	CN17		

USER CONFIGURABLE SETTINGS		
Function	Label	Position
? Factory configured - do not alter (CMOS clear)	CN12	Unidentified
? Factory configured - do not alter	CN15	Unidentified
? Factory configured - do not alter	JP4	Open
? Factory configured - do not alter	JP6	Pins 2 & 3 closed
? Factory configured - do not alter	JP10	Pins 2 & 3 closed
Password enabled	SW1/4	On
Password disabled	SW1/4	Off

DIMM CONFIGURATION			
Size	Bank 0	Bank 1	Bank 2
16MB	(1) 2M x 64	None	None
32MB	(1) 4M x 64	None	None
32MB	(1) 2M x 64	(1) 2M x 64	None
40MB	(1) 4M x 64	(1) 1M x 64	None
48MB	(1) 4M x 64	(1) 2M x 64	None
48MB	(1) 2M x 64	(1) 2M x 64	(1) 2M x 64
64MB	(1) 8M x 64	None	None
64MB	(1) 4M x 64	(1) 2M x 64	(1) 2M x 64
64MB	(1) 4M x 64	(1) 4M x 64	None
80MB	(1) 8M x 64	(1) 2M x 64	None
80MB	(1) 4M x 64	(1) 4M x 64	(1) 2M x 64
96MB	(1) 8M x 64	(1) 2M x 64	(1) 2M x 64

Continued on next page...

... continued from previous page

DIMM CONFIGURATION (CON'T)			
Size	Bank 0	Bank 1	Bank 2
96MB	(1) 8M x 64	(1) 4M x 64	None
96MB	(1) 4M x 64	(1) 4M x 64	(1) 4M x 64
112MB	(1) 8M x 64	(1) 4M x 64	(1) 2M x 64
128MB	(1) 16M x 64	None	None
128MB	(1) 8M x 64	(1) 4M x 64	(1) 4M x 64
128MB	(1) 8M x 64	(1) 8M x 64	None
136MB	(1) 16M x 64	(1) 1M x 64	None
144MB	(1) 16M x 64	(1) 2M x 64	None
144MB	(1) 8M x 64	(1) 8M x 64	(1) 2M x 64
160MB	(1) 16M x 64	(1) 2M x 64	(1) 2M x 64
160MB	(1) 16M x 64	(1) 4M x 64	None
160MB	(1) 8M x 64	(1) 8M x 64	(1) 4M x 64
176MB	(1) 16M x 64	(1) 4M x 64	(1) 2M x 64
192MB	(1) 16M x 64	(1) 4M x 64	(1) 4M x 64
192MB	(1) 16M x 64	(1) 8M x 64	None
192MB	(1) 8M x 64	(1) 8M x 64	(1) 8M x 64
208MB	(1) 16M x 64	(1) 8M x 64	(1) 2M x 64
224MB	(1) 16M x 64	(1) 8M x 64	(1) 4M x 64
256MB	(1) 16M x 64	(1) 8M x 64	(1) 8M x 64

Note: Board accepts SDRAM memory.

CACHE CONFIGURATION		
Size	Bank 0	TAG
512KB	(2) 64K x 32	(1) 32K x 8

CPU BUS SPEED SELECTION		
CPU speed	JP2	JP3
60MHz	Pins 1 & 3, 2 & 4 closed	Pins 3 & 5, 4 & 6 closed
66MHz	Pins 3 & 5, 4 & 6 closed	Pins 3 & 5, 4 & 6 closed
75MHz	Pins 1 & 3, 2 & 4 closed	Pins 1 & 3, 2 & 4 closed
83.3MHz	Pins 3 & 5, 4 & 6 closed	Pins 1 & 3, 2 & 4 closed

CPU MULTIPLIER SELECTION (CX 6X86L)			
Multiplier	SW1/1	SW1/2	SW1/3
3x	Off	Off	Off
2x	On	Off	Off
2x	On	On	Off
3x	Off	On	Off

Continued on next page...

... continued from previous page

CPU MULTIPLIER SELECTION (CX M2)			
Multiplier	SW1/1	SW1/2	SW1/3
2x	On	Off	Off
2.5x	On	On	Off
3x	Off	On	Off
3.5x	Off	Off	Off

CPU MULTIPLIER SELECTION (AM K6)			
Multiplier	SW1/1	SW1/2	SW1/3
2.5x	On	On	Off
3x	Off	On	Off
3.5x	Off	Off	Off

CPU MULTIPLIER SELECTION (INTEL)			
Multiplier	SW1/1	SW1/2	SW1/3
1.5x	Off	Off	Off
2x	On	Off	Off
2.5x	On	On	Off
3x	Off	On	Off
3.5x	Off	Off	Off

CPU TYPE SELECTION	
Type	JP8
Single voltage	Pins 3 & 5, 4 & 6 closed
? Dual voltage	Pins 1 & 3, 2 & 4 closed

CPU CORE VOLTAGE SELECTION	
Voltage	JP11
2.1v	Pins 11 & 12 closed
? 2.8v	Pins 3 & 4 closed
2.9v	Pins 5 & 6 closed
3.2v	Pins 7 & 8 closed
3.3v	Pins 1 & 2 closed
3.5v	Pins 9 & 10 closed

HARDWARE MONITORING CORE VOLTAGE SELECTION	
Voltage	JP7
? 2.8v	Pins 5 & 6 closed
2.9v	Pins 3 & 4 closed
3.2v	Pins 1 & 2 closed

Continued on next page...

ACER, INC.
V58

... continued from previous page

HARDWARE MONITORING VOLTAGE SELECTION	
Voltage	JP9
? 3.3v	Pins 3 & 4 closed
3.52v	Pins 1 & 2 closed

BIOS SELECTION	
Setting	JP5
? 5v	Pins 2 & 3 closed
12v	Pins 1 & 2 closed
None	Pins 3 & 4 closed

POWER SUPPLY SELECTION		
Setting	JP1	JP15
? Resume	Pins 3 & 5, 4 & 6 closed	Pins 2 & 3 closed
Traditional	Pins 1 & 3, 2 & 4 closed	Pins 1 & 2 closed