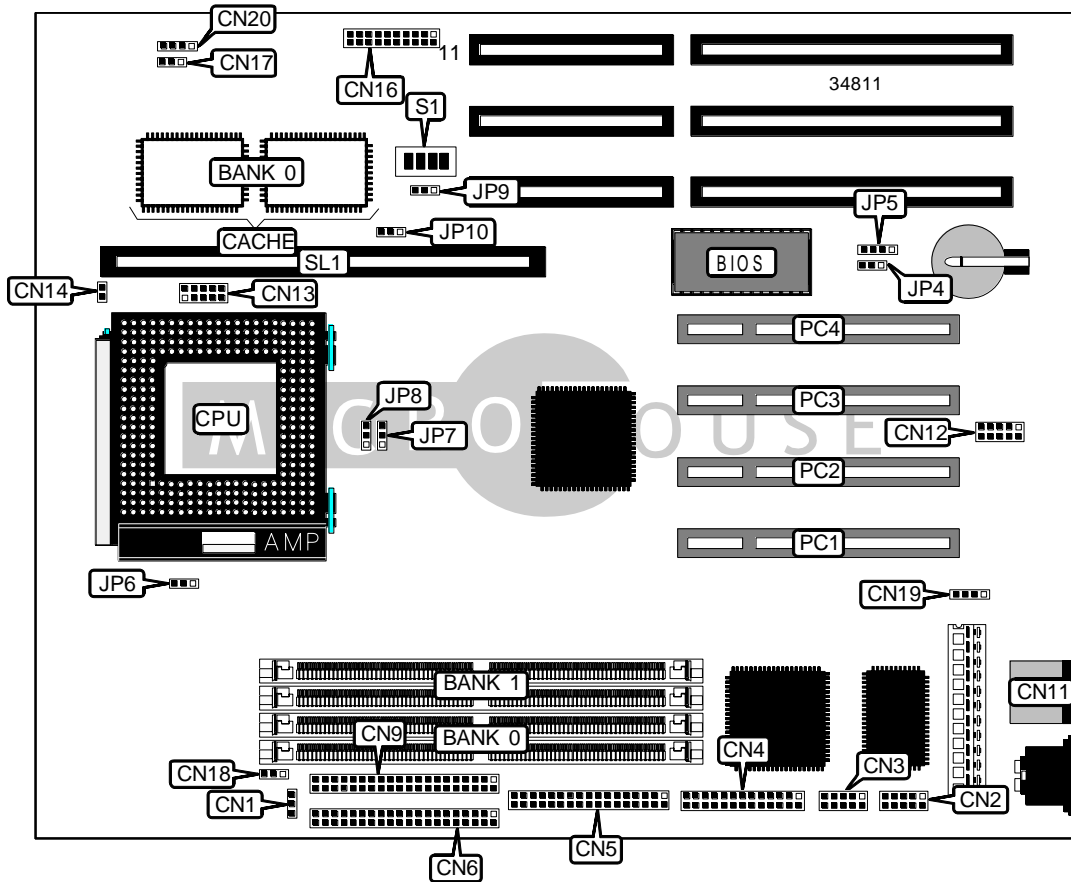


ACER, INC.
V 5 5

Device Type	Mainboard
Processor	CX M1/AM K5/Pentium
Processor Speed	75/90/100/120/133/150/166/200MHz
Chip Set	Unidentified
Video Chip Set	None
Maximum Onboard Memory	128MB (EDO supported)
Maximum Video Memory	None
Cache	256/512KB
BIOS	Unidentified
Dimensions	254mm x 218mm
I/O Options	32-bit PCI slots (4), floppy drive interface, green PC connector, IDE interfaces (2), parallel port, PS/2 mouse port, serial ports (2), cache slot, IR connector, USB connector
NPU Options	None



Continued on next page . . .

ACER, INC.
V 5 5

... continued from previous page

CONNECTIONS			
Purpose	Location	Purpose	Location
Standby power connector	CN1	Power LED & keylock	CN16/pins 1 – 5
Serial port 2	CN2	Speaker	CN16/pins 7 – 10
Serial port 1	CN3	Green PC LED	CN16/pins 12 & 13
Parallel port	CN4	Reset switch	CN16/pins 19 & 20
Floppy drive interface	CN5	Green PC connector	CN17
IDE interface 2	CN6	Software shutdown switch	CN18
IDE interface 1	CN9	IR connector	CN19
PS/2 mouse port	CN11	IDE interface LED	CN20
USB connector	CN12	32-bit PCI slots	PC1 – PC4
CPU power shorting block	CN13	Cache slot	SL1
CPU fan power	CN14		

USER CONFIGURABLE SETTINGS		
Function	Label	Position
? BIOS type select flash	JP4	Pins 2 & 3 closed
BIOS type select EPROM	JP4	Pins 1 & 2 closed

SIMM CONFIGURATION		
Size	Bank 0	Bank 1
8MB	(2) 1M x 36	None
16MB	(2) 2M x 36	None
16MB	(2) 1M x 36	(2) 1M x 36
24MB	(2) 2M x 36	(2) 1M x 36
32MB	(2) 4M x 36	None
32MB	(2) 2M x 36	(2) 2M x 36
40MB	(2) 4M x 36	(2) 1M x 36
48MB	(2) 4M x 36	(2) 2M x 36
64MB	(2) 8M x 36	None
64MB	(2) 4M x 36	(2) 4M x 36
72MB	(2) 8M x 36	(2) 1M x 36
80MB	(2) 8M x 36	(2) 2M x 36
96MB	(2) 8M x 36	(2) 4M x 36
128MB	(2) 8M x 36	(2) 8M x 36

CACHE CONFIGURATION		
Size	Bank 0	SL1
256KB	(2) 32K x 32	Not installed
512KB	(2) 32K x 32	256KB module installed

Continued on next page. . .

... continued from previous page

CACHE JUMPER CONFIGURATION		
Size	JP8	JP9
256KB	Pins 2 & 3 closed	Pins 2 & 3 closed
512KB	Pins 1 & 2 closed	Pins 1 & 2 closed

CACHE TYPE CONFIGURATION	
Type	JP10
? M1 1 + 4 mode	Pins 2 & 3 closed
M1 linear burst mode	Pins 1 & 2 closed

CPU CLOCK FREQUENCY SELECTION		
Clock speed	S1/3	S1/4
50MHz	On	On
60MHz	Off	On
66MHz	On	Off

CPU BUS RATIO SELECTION (CYRIX)		
Bus ratio	S1/1	SW1/2
1	On	On
2	Off	On
3	Off	Off
4	On	Off

CPU BUS RATIO SELECTION (AMD)		
Bus ratio	S1/1	SW1/2
2	On	On
2	Off	On
3/2	On	Off
3/2	Off	Off

CPU BUS RATIO SELECTION (INTEL)		
Bus ratio	S1/1	SW1/2
2	Off	On
3	On	Off
3/2	Off	Off
5/2	On	On

Continued on next page...

ACER, INC.
V55

... continued from previous page

CPU VOLTAGE SELECTION			
Voltage	V core	JP6	JP7
? 3.3v	2.8v	Pins 2 & 3 closed	Pins 2 & 3 closed
3.5v	2.5v	Pins 1 & 2 closed	Pins 1 & 2 closed

BIOS SELECTION	
Type	JP5
NC	Pins 1 & 2 closed
? 29E010	Pins 2 & 3 closed
28F001	Pins 3 & 4 closed