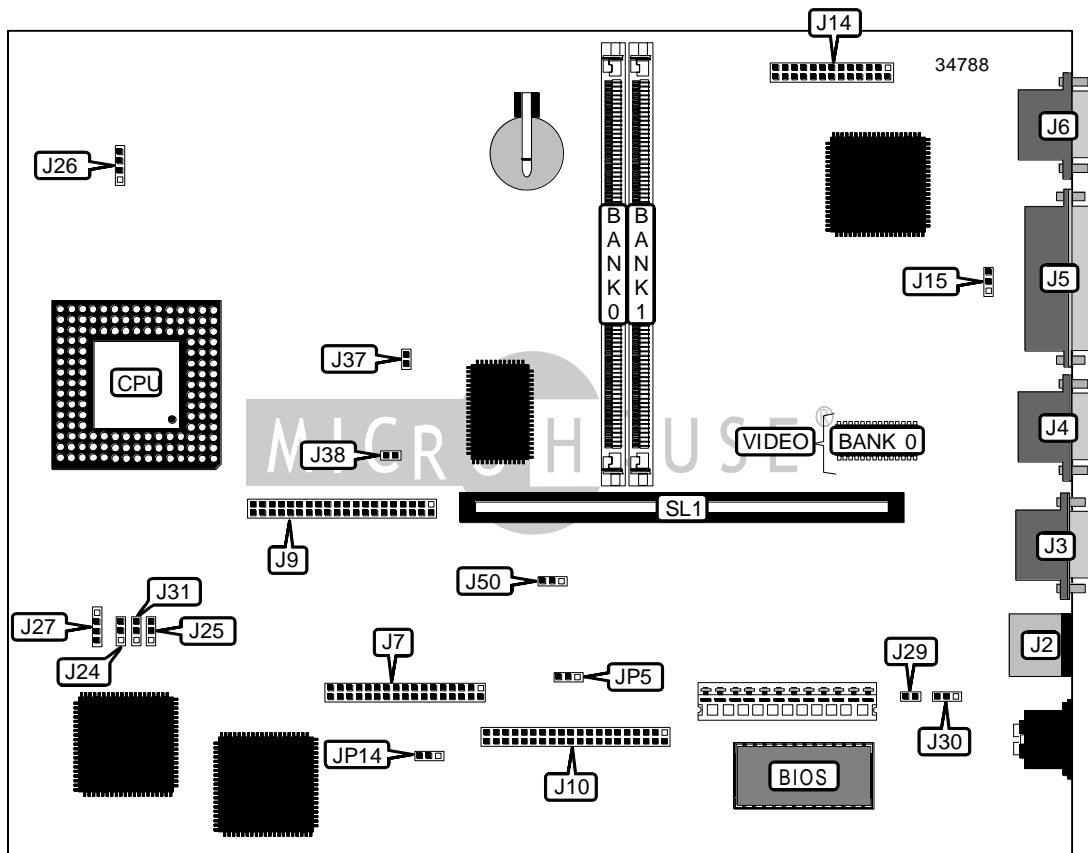


IBM CORPORATION

APTIVA 2144 TYPE C-1, APTIVA 2168 TYPE C-1

| | |
|-------------------------------|---|
| Device Type | Mainboard |
| Processor | 80486SX/80486SX2/80487SX/ODP486/80486DX/80486DX2 |
| Processor Speed | 25/33/50(internal)/66(internal)MHz |
| Chip Set | Unidentified |
| Video Chip Set | Unidentified |
| Maximum Onboard Memory | 64MB |
| Maximum Video Memory | 1MB |
| Cache | None |
| BIOS | Unidentified |
| Dimensions | 330mm x 218mm |
| I/O Options | Floppy drive interface, IDE interfaces (2), parallel port, PS/2 mouse port, serial ports (2), riser slot, VGA feature connector |
| NPU Options | None |



Continued on next page . . .

IBM CORPORATION

APTIVA 2144 TYPE C-1, APTIVA 2168 TYPE C-1

... continued from previous page

| CONNECTIONS | | | |
|------------------------|----------|-------------------------|----------|
| Purpose | Location | Purpose | Location |
| PS/2 mouse port | J2 | VGA feature connector | J14 |
| Serial port 1 | J3 | IDE interface LED | J26 |
| Serial port 2 | J4 | Speaker | J27 |
| Parallel port | J5 | Soft off power supply | J29 |
| VGA port | J6 | Soft off power supply | J30 |
| Floppy drive interface | J7 | Chassis fan power | J38 |
| IDE interface 1 | J9 | Wake on modem connector | JP5 |
| IDE interface 2 | J10 | Riser slot | SL1 |

| USER CONFIGURABLE SETTINGS | | |
|-----------------------------|-------|-------------------|
| Function | Label | Position |
| í On board video disabled | J15 | Pins 1 & 2 closed |
| On board video enabled | J15 | Pins 2 & 3 closed |
| Parity enabled | J50 | Pins 1 & 2 closed |
| Parity disabled | J50 | Pins 2 & 3 closed |
| í Password normal operation | JP14 | Pins 1 & 2 closed |
| Password clear | JP14 | Pins 2 & 3 closed |

| SIMM CONFIGURATION | | |
|--------------------|---------------|---------------|
| Size | Bank 0 | Bank 1 |
| 1MB | (1) 256K x 36 | None |
| 2MB | (1) 512K x 36 | None |
| 2MB | (1) 256K x 36 | (1) 256K x 36 |
| 3MB | (1) 512K x 36 | (1) 256K x 36 |
| 4MB | (1) 1M x 36 | None |
| 4MB | (1) 512K x 36 | (1) 512K x 36 |
| 5MB | (1) 1M x 36 | (1) 256K x 36 |
| 6MB | (1) 512K x 36 | (1) 1M x 36 |
| 8MB | (1) 2M x 36 | None |
| 8MB | (1) 1M x 36 | (1) 1M x 36 |
| 9MB | (1) 2M x 36 | (1) 256K x 36 |
| 10MB | (1) 2M x 36 | (1) 512K x 36 |
| 12MB | (1) 2M x 36 | (1) 1M x 36 |
| 16MB | (1) 4M x 36 | None |
| 16MB | (1) 2M x 36 | (1) 2M x 36 |
| 17MB | (1) 256K x 36 | (1) 4M x 36 |

Continued on next page...

IBM CORPORATION

APTIVA 2144 TYPE C-1, APTIVA 2168 TYPE C-1

... continued from previous page

| SIMM CONFIGURATION (CON'T) | | |
|----------------------------|---------------|---------------|
| Size | Bank 0 | Bank 1 |
| 18MB | (1) 512K x 36 | (1) 4M x 36 |
| 20MB | (1) 4M x 36 | (1) 1M x 36 |
| 24MB | (1) 4M x 36 | (1) 2M x 36 |
| 32MB | (1) 8M x 36 | None |
| 32MB | (1) 4M x 36 | (1) 4M x 36 |
| 33MB | (1) 8M x 36 | (1) 256K x 36 |
| 34MB | (1) 8M x 36 | (1) 512K x 36 |
| 36MB | (1) 8M x 36 | (1) 1M x 36 |
| 40MB | (1) 8M x 36 | (1) 2M x 36 |
| 48MB | (1) 8M x 36 | (1) 4M x 36 |
| 64MB | (1) 8M x 36 | (1) 8M x 36 |

| VIDEO MEMORY CONFIGURATION |
|---|
| Note: Board is factory installed with either 512KB or 1MB video memory. |

| CPU SPEED SELECTION | |
|---------------------|--------|
| Speed | J37 |
| 25MHz | Closed |
| 33MHz | Open |
| 50MHz | Closed |
| 66MHz | Open |

| CPU TYPE SELECTION | | | |
|--------------------|-------------------|-------------------|-------------------|
| Type | J24 | J25 | J31 |
| 80486SX | Pins 2 & 3 closed | Pins 2 & 3 closed | Pins 1 & 2 closed |
| 80486SX | Pins 2 & 3 closed | Pins 1 & 2 closed | Pins 2 & 3 closed |
| 80487SX | Pins 1 & 2 closed | Pins 1 & 2 closed | Pins 2 & 3 closed |
| ODP486 | Pins 1 & 2 closed | Pins 1 & 2 closed | Pins 2 & 3 closed |
| 80486DX | Pins 2 & 3 closed | Pins 1 & 2 closed | Pins 2 & 3 closed |
| 80486DX2 | Pins 2 & 3 closed | Pins 1 & 2 closed | Pins 2 & 3 closed |

Note: The settings for the 80486SX2 are unidentified.