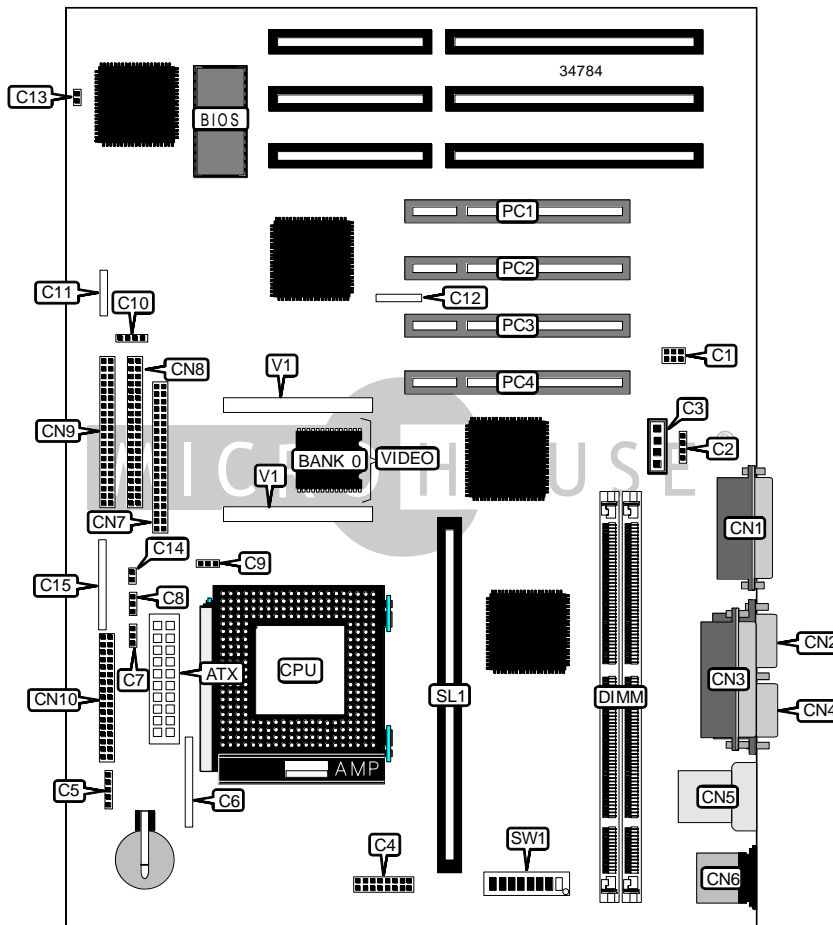


SIEMENS-NIXDORF INFORMATIONSSYSTEME AG SYSTEM BOARD D990

| | |
|-------------------------------|---|
| Device Type | Mainboard |
| Processor | Pentium |
| Processor Speed | 90/100/120/133/150/166/200MHz |
| Chip Set | Unidentified |
| Video Chip Set | Matrox |
| Maximum Onboard Memory | 256MB (EDO & SDRAM supported) |
| Maximum Video Memory | 4MB (SGRAM supported) |
| Cache | 128/256/512KB |
| BIOS | Unidentified |
| Dimensions | 305mm x 244mm |
| I/O Options | 32-bit PCI slots (4), floppy drive interface, game/MIDI port, IDE interfaces (2), parallel port, PS/2 mouse port, serial port, VGA feature connector, VGA port, cache slot, IR connector, USB connector, ATX power connector, audio in – CD-ROM |
| NPU Options | None |



Continued on next page...

SIEMENS-NIXDORF INFORMATIONSSYSTEME AG

SYSTEM BOARD D990

... continued from previous page

| CONNECTIONS | | | |
|-------------------------|----------|------------------------|-----------|
| Purpose | Location | Purpose | Location |
| ATX power connector | ATX | Front panel connector | C15 |
| Voice modem connector | C1 | Game/MIDI port | CN1 |
| Auxiliary in | C2 | VGA port | CN2 |
| Audio in – CD-ROM | C3 | Parallel port | CN3 |
| Chip card reader | C4 | Serial port 1 | CN4 |
| IR connector | C5 | USB connector | CN5 |
| Reset switch | C6 | PS/2 mouse port | CN6 |
| SCSI interface LED | C7 | VGA feature connector | CN7 |
| Soft off power supply | C8 | IDE interface 1 | CN8 |
| Chassis fan power | C9 | IDE interface 2 | CN9 |
| Speaker | C10 | Floppy drive interface | CN10 |
| I2C connector | C11 | 32-bit PCI slots | PC1 – PC4 |
| Wake on modem connector | C13 | Cache slot | SL1 |
| Power on connector | C14 | | |

| USER CONFIGURABLE SETTINGS | | |
|---------------------------------------|-------|--------------|
| Function | Label | Position |
| í Factory configured - do not alter | C12 | Unidentified |
| í Flash BIOS normal operation | SW1/5 | Off |
| Flash BIOS recovery mode | SW1/5 | On |
| í Factory configured - do not alter | SW1/6 | Off |
| í Factory configured - do not alter | SW1/7 | Unidentified |
| í Floppy drive write protect disabled | SW1/8 | Off |
| Floppy drive write protect enabled | SW1/8 | On |

| DIMM CONFIGURATION | | |
|--------------------|-------------|-------------|
| Size | Bank 0 | Bank 1 |
| 8MB | (1) 1M x 64 | None |
| 16MB | (1) 2M x 64 | None |
| 16MB | (1) 1M x 64 | (1) 1M x 64 |
| 24MB | (1) 2M x 64 | (1) 1M x 64 |
| 32MB | (1) 4M x 64 | None |
| 32MB | (1) 2M x 64 | (1) 2M x 64 |
| 40MB | (1) 4M x 64 | (1) 1M x 64 |
| 48MB | (1) 4M x 64 | (1) 2M x 64 |
| 64MB | (1) 8M x 64 | None |

Continued on next page...

SIEMENS-NIXDORF INFORMATIONSSYSTEME AG
SYSTEM BOARD D990

... continued from previous page

| DIMM CONFIGURATION (CON'T) | | |
|----------------------------|--------------|--------------|
| Size | Bank 0 | Bank 1 |
| 64MB | (1) 4M x 64 | (1) 4M x 64 |
| 72MB | (1) 8M x 64 | (1) 1M x 64 |
| 80MB | (1) 8M x 64 | (1) 2M x 64 |
| 96MB | (1) 8M x 64 | (1) 4M x 64 |
| 128MB | (1) 16M x 64 | None |
| 128MB | (1) 8M x 64 | (1) 8M x 64 |
| 136MB | (1) 16M x 64 | (1) 1M x 64 |
| 144MB | (1) 16M x 64 | (1) 2M x 64 |
| 160MB | (1) 16M x 64 | (1) 4M x 64 |
| 192MB | (1) 16M x 64 | (1) 8M x 64 |
| 256MB | (1) 16M x 64 | (1) 16M x 64 |

Note: Board accepts EDO & SDRAM memory.

| CACHE CONFIGURATION | |
|---------------------|------------------------|
| Size | SL1 |
| 128KB | 128KB module installed |
| 256KB | 256KB module installed |
| 512KB | 512KB module installed |

| VIDEO MEMORY CONFIGURATION | | |
|----------------------------|--------|----------------------|
| Size | Bank 0 | V1 |
| 2MB | 2MB | None |
| 4MB | 2MB | 2MB module installed |

| CPU SPEED SELECTION | | | | | | |
|---------------------|-------------|------------|-------|-------|-------|-------|
| CPU speed | Clock speed | Multiplier | SW1/1 | SW1/2 | SW1/3 | SW1/4 |
| 90MHz | 60MHz | 1.5x | Off | On | Off | Off |
| 100MHz | 66MHz | 1.5x | On | Off | Off | Off |
| 120MHz | 60MHz | 2x | Off | On | On | Off |
| 133MHz | 66MHz | 2x | On | Off | On | Off |
| 150MHz | 60MHz | 2.5x | Off | On | On | On |
| 166MHz | 66MHz | 2.5x | On | Off | On | On |
| 200MHz | 66MHz | 3x | On | Off | Off | On |