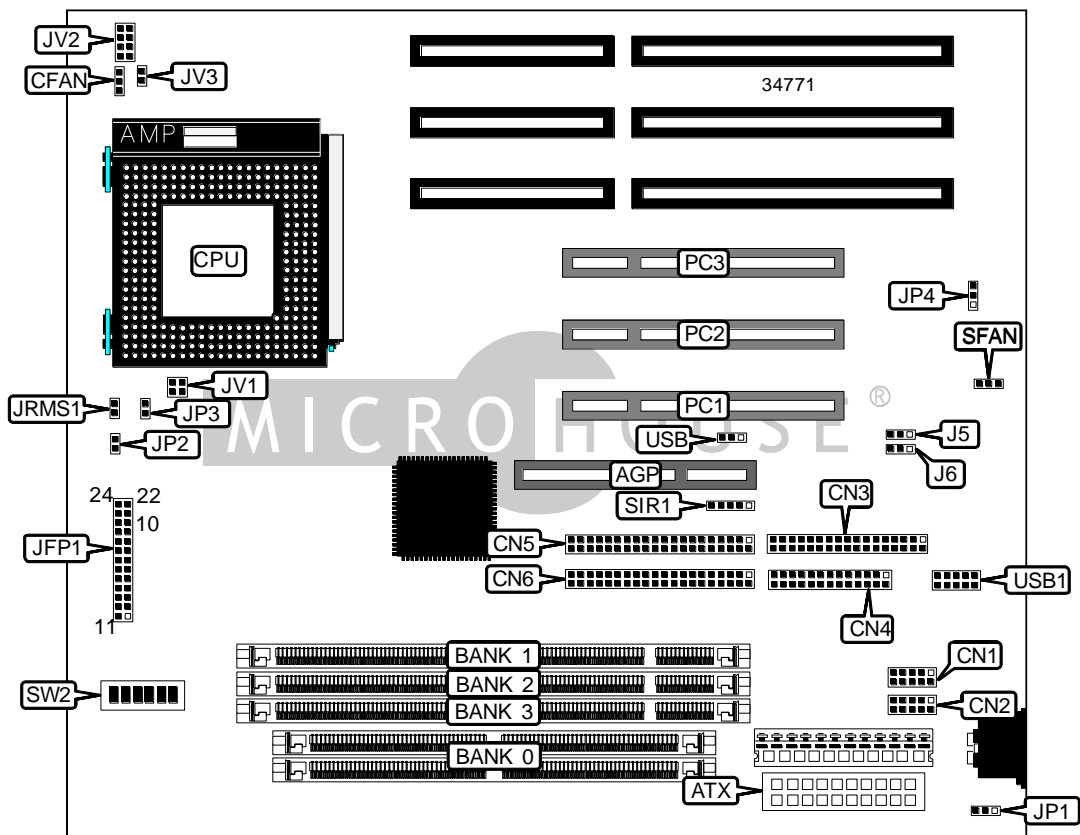


MICRO-STAR INTERNATIONAL CO., LTD.

MS - 5 1 6 8

Device Type	Mainboard
Processor	CX 6X86/CX 6X86L/CX 686MX/AM K5/AM K6/Pentium
Processor Speed	Unidentified
Chip Set	SIS
Video Chip Set	None
Maximum Onboard Memory	384MB (EDO & SDRAM supported)
Maximum Video Memory	None
Cache	512KB
BIOS	Unidentified
Dimensions	240mm x 220mm
I/O Options	32-bit PCI slots (3), floppy drive interface, green PC connector, IDE interfaces (2), parallel port, serial ports (2), USB connector, ATX power connector, AGP slot
NPU Options	None



Continued on next page. . .

MICRO-STAR INTERNATIONAL CO., LTD.
MS - 5168

... continued from previous page

CONNECTIONS			
Purpose	Location	Purpose	Location
AGP slot	AGP	Power LED & keylock	JFP1/pins 1 - 5
ATX power connector	ATX	Speaker	JFP1/pins 7 - 10
CPU fan power	CFAN	Turbo LED	JFP1/pins 12 & 13
Serial port 2	CN1	Reset switch	JFP1/pins 19 & 20
Serial port 1	CN2	IDE interface LED	JFP1/pins 22 & 24
Floppy drive interface	CN3	Green PC LED	JP2
Parallel port	CN4	Soft off power supply	JRMS1
IDE interface 2	CN5	32-bit PCI slots	PC1 – PC3
IDE interface 1	CN6	Chassis fan power	SFAN
Wake on modem connector	J5	IR connector	SIR1
Wake on LAN connector	J6	USB connector	USB1

USER CONFIGURABLE SETTINGS		
Function	Label	Position
Power on mode voltage select VCC	JP1	Pins 2 & 3 closed
Power on mode voltage select 5vsb	JP1	Pins 1 & 2 closed
í Factory configured - do not alter	JP3	Unidentified
í Factory configured - do not alter	JP4	Unidentified
í Factory configured - do not alter	USB	Unidentified

SIMM CONFIGURATION	
Size	Bank 0
8MB	(2) 1M x 36
16MB	(2) 2M x 36
32MB	(2) 4M x 36
64MB	(2) 8M x 36
128MB	(2) 16M x 36
256MB	(2) 32M x 36

Note: Board accepts EDO memory.

DIMM CONFIGURATION			
Size	Bank 1	Bank 2	Bank 3
8MB	(1) 1M x 64	None	None
16MB	(1) 2M x 64	None	None
16MB	(1) 1M x 64	(1) 1M x 64	None
24MB	(1) 2M x 64	(1) 1M x 64	None
24MB	(1) 1M x 64	(1) 1M x 64	(1) 1M x 64
32MB	(1) 4M x 64	None	None
32MB	(1) 2M x 64	(1) 2M x 64	None
40MB	(1) 4M x 64	(1) 1M x 64	None

Continued on next page. . .

MICRO-STAR INTERNATIONAL CO., LTD.
MS - 5 1 6 8

... continued from previous page

DIMM CONFIGURATION (CON'T)			
Size	Bank 1	Bank 2	Bank 3
48MB	(1) 4M x 64	(1) 2M x 64	None
48MB	(1) 2M x 64	(1) 2M x 64	(1) 2M x 64
64MB	(1) 8M x 64	None	None
64MB	(1) 4M x 64	(1) 4M x 64	None
72MB	(1) 8M x 64	(1) 1M x 64	None
80MB	(1) 8M x 64	(1) 2M x 64	None
96MB	(1) 8M x 64	(1) 4M x 64	None
96MB	(1) 4M x 64	(1) 4M x 64	(1) 4M x 64
128MB	(1) 16M x 64	None	None
128MB	(1) 8M x 64	(1) 8M x 64	None
136MB	(1) 16M x 64	(1) 1M x 64	None
144MB	(1) 16M x 64	(1) 2M x 64	None
160MB	(1) 16M x 64	(1) 4M x 64	None
192MB	(1) 16M x 64	(1) 8M x 64	None
192MB	(1) 8M x 64	(1) 8M x 64	(1) 8M x 64
256MB	(1) 32M x 64	None	None
256MB	(1) 16M x 64	(1) 16M x 64	None
264MB	(1) 32M x 64	(1) 1M x 64	None
272MB	(1) 32M x 64	(1) 2M x 64	None
288MB	(1) 32M x 64	(1) 4M x 64	None
320MB	(1) 32M x 64	(1) 8M x 64	None
384MB	(1) 32M x 64	(1) 16M x 64	None
384MB	(1) 16M x 64	(1) 16M x 64	(1) 16M x 64

Note: Board accepts SDRAM memory.

CACHE CONFIGURATION
Note: 512KB cache is factory installed and is not configurable. The location is unidentified.

CPU CLOCK SPEED SELECTION					
CPU speed	AGP speed	PCI speed	SW2/4	SW2/5	SW2/6
60MHz	60MHz	30MHz	On	On	On
66MHz	66MHz	33MHz	Off	On	On
75MHz	64MHz	32MHz	On	On	Off
83MHz	66MHz	33MHz	Off	On	Off

CPU MULTIPLIER SELECTION			
Multiplier	SW2/1	SW2/2	SW2/3
1.5x	Off	Off	Off
2x	On	Off	Off
2.5x	On	On	Off
3x	Off	On	Off
3.5x	Off	Off	Off

Continued on next page...

... continued from previous page

CPU VOLTAGE SELECTION		
Voltage	V core	JV2
3.3v	2.0v	Open
3.3v	2.1v	Pins 7 & 8 closed
3.3v	2.2v	Pins 5 & 6 closed
3.3v	2.3v	Pins 5 & 6, 7 & 8 closed
3.3v	2.4v	Pins 3 & 4 closed
3.3v	2.5v	Pins 3 & 4, 7 & 8 closed
3.3v	2.6v	Pins 3 & 4, 5 & 6, closed
3.3v	2.7v	Pins 3 & 4, 5 & 6, 7 & 8 closed
3.3v	2.8v	Pins 1 & 2 closed
3.3v	2.9v	Pins 1 & 2, 7 & 8 closed
3.3v	3.0v	Pins 1 & 2, 5 & 6 closed
3.3v	3.1v	Pins 1 & 2, 5 & 6, 7 & 8 closed
3.3v	3.2v	Pins 1 & 2, 3 & 4 closed
3.3v	3.3v	Pins 1 & 2, 3 & 4, 7 & 8 closed
3.3v	3.4v	Pins 1 & 2, 3 & 4, 5 & 6 closed
3.5v	3.5v	Pins 1 & 2, 3 & 4, 5 & 6, 7 & 8 closed

CPU VOLTAGE SELECTION		
Setting	JV1	JV3
Single	Open	Closed
Dual	Pins 1 & 2, 3 & 4 closed	Open