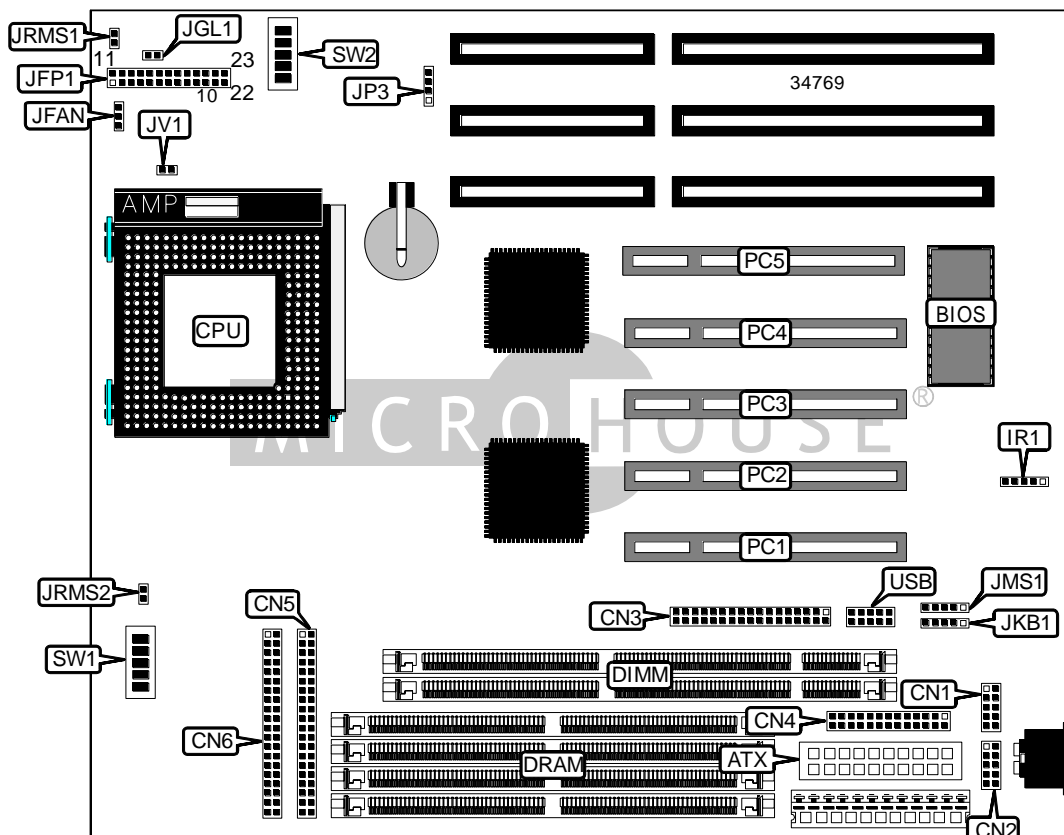


MICRO-STAR INTERNATIONAL CO., LTD.
 MS - 5 1 6 4

Device Type	Mainboard
Processor	CX 6X86/CX 6X86L/CX 686MX/AM K5/AM K6/Pentium
Processor Speed	90/100/120/133/150/166/200/233MHz
Chip Set	Aladdin
Video Chip Set	None
Maximum Onboard Memory	1GB (EDO & SDRAM supported)
Maximum Video Memory	None
Cache	512KB
BIOS	Unidentified
Dimensions	250mm x 220mm
I/O Options	32-bit PCI slots (5), floppy drive interface, IDE interfaces (2), parallel port, PS/2 mouse interface, serial ports (2), IR connector, USB connector, ATX power connector
NPU Options	None



Continued on next page...

... continued from previous page

CONNECTIONS			
Purpose	Location	Purpose	Location
ATX power connector	ATX	Speaker	JFP1/pins 7 - 10
Serial port 1	CN1	Turbo LED	JFP1/pins 12 & 13
Serial port 2	CN2	Reset switch	JFP1/pins 19 & 20
Floppy drive interface	CN3	IDE interface LED	JFP1/pins 22 & 24
Parallel port	CN4	Auxiliary keyboard connector	JKB1
IDE interface 2	CN5	PS/2 mouse interface	JMS1
IDE interface 1	CN6	Soft off power supply	JRMS1
IR connector	IR1	Soft off power supply	JRMS2
Chassis fan power	JFAN	32-bit PCI slots	PC1 – PC5
Power LED & keylock	JFP1/pins 1 - 5	USB connector	USB

USER CONFIGURABLE SETTINGS		
Function	Label	Position
í Factory configured - do not alter	JGL1	Unidentified
í CMOS memory normal operation	JP3	Pins 2 & 3 closed
CMOS memory clear	JP3	Pins 3 & 4 closed

SIMM CONFIGURATION		
Size	Bank 0	Bank 1
8MB	(2) 1M x 36	None
16MB	(2) 2M x 36	None
16MB	(2) 1M x 36	(2) 1M x 36
24MB	(2) 2M x 36	(2) 1M x 36
32MB	(2) 4M x 36	None
32MB	(2) 2M x 36	(2) 2M x 36
40MB	(2) 4M x 36	(2) 1M x 36
48MB	(2) 4M x 36	(2) 2M x 36
64MB	(2) 8M x 36	None
64MB	(2) 4M x 36	(2) 4M x 36
72MB	(2) 8M x 36	(2) 1M x 36
80MB	(2) 8M x 36	(2) 2M x 36
96MB	(2) 8M x 36	(2) 4M x 36
128MB	(2) 8M x 36	(2) 8M x 36
128MB	(2) 16M x 36	None
136MB	(2) 16M x 36	(2) 1M x 36
144MB	(2) 16M x 36	(2) 2M x 36
160MB	(2) 16M x 36	(2) 4M x 36
192MB	(2) 16M x 36	(2) 8M x 36
256MB	(2) 16M x 36	(2) 16M x 36
256MB	(2) 32M x 36	None
264MB	(2) 32M x 36	(2) 1M x 36

Continued on next page. . .

MICRO-STAR INTERNATIONAL CO., LTD.
MS-5164

... continued from previous page

SIMM CONFIGURATION (CON'T)		
Size	Bank 0	Bank 1
272MB	(2) 32M x 36	(2) 2M x 36
288MB	(2) 32M x 36	(2) 4M x 36
320MB	(2) 32M x 36	(2) 8M x 36
384MB	(2) 32M x 36	(2) 16M x 36
512MB	(2) 64M x 36	None
512MB	(2) 32M x 36	(2) 32M x 36
520MB	(2) 64M x 36	(2) 1M x 36
528MB	(2) 64M x 36	(2) 2M x 36
544MB	(2) 64M x 36	(2) 4M x 36
576MB	(2) 64M x 36	(2) 8M x 36
640MB	(2) 64M x 36	(2) 16M x 36
768MB	(2) 64M x 36	(2) 32M x 36
1024MB	(2) 64M x 36	(2) 64M x 36

Note: Board accepts EDO memory. Do not mix SIMMs & DIMMs.

DIMM CONFIGURATION		
Size	Bank 2	Bank 3
8MB	(1) 1M x 64	None
16MB	(1) 2M x 64	None
16MB	(1) 1M x 64	(1) 1M x 64
24MB	(1) 2M x 64	(1) 1M x 64
32MB	(1) 4M x 64	None
32MB	(1) 2M x 64	(1) 2M x 64
40MB	(1) 4M x 64	(1) 1M x 64
48MB	(1) 4M x 64	(1) 2M x 64
64MB	(1) 8M x 64	None
64MB	(1) 4M x 64	(1) 4M x 64
72MB	(1) 8M x 64	(1) 1M x 64
80MB	(1) 8M x 64	(1) 2M x 64
96MB	(1) 8M x 64	(1) 4M x 64
128MB	(1) 16M x 64	None
128MB	(1) 8M x 64	(1) 8M x 64
136MB	(1) 16M x 64	(1) 1M x 64
144MB	(1) 16M x 64	(1) 2M x 64
160MB	(1) 16M x 64	(1) 4M x 64
192MB	(1) 16M x 64	(1) 8M x 64
256MB	(1) 16M x 64	(1) 16M x 64
256MB	(1) 32M x 64	None
264MB	(1) 32M x 64	(1) 1M x 64
272MB	(1) 32M x 64	(1) 2M x 64
288MB	(1) 32M x 64	(1) 4M x 64

Continued on next page...

MICRO-STAR INTERNATIONAL CO., LTD.
MS-5164

... continued from previous page

DIMM CONFIGURATION (CON'T)		
Size	Bank 2	Bank 3
320MB	(1) 32M x 64	(1) 8M x 64
384MB	(1) 32M x 64	(1) 16M x 64
512MB	(1) 32M x 64	(1) 32M x 64
512MB	(1) 64M x 64	None
520MB	(1) 64M x 64	(1) 1M x 64
528MB	(1) 64M x 64	(1) 2M x 64
544MB	(1) 64M x 64	(1) 4M x 64
576MB	(1) 64M x 64	(1) 8M x 64
640MB	(1) 64M x 64	(1) 16M x 64
768MB	(1) 64M x 64	(1) 32M x 64
1024MB	(1) 64M x 64	(1) 64M x 64

Note: Board accepts SDRAM memory.

CACHE CONFIGURATION
Note: 512KB cache is factory installed and is not configurable. The location is unidentified.

CPU SPEED SELECTION (CX 6X86)							
CPU speed	Clock speed	Multiplier	SW1/1	SW1/2	SW1/3	SW1/4	SW1/5
150MHz	60MHz	2x	On	Off	Off	On	On
166MHz	66MHz	2.5x	On	On	Off	On	On
200MHz	66MHz	2.5x	On	On	Off	Off	On

CPU SPEED SELECTION (CX 6X86L)							
CPU speed	Clock speed	Multiplier	SW1/1	SW1/2	SW1/3	SW1/4	SW1/5
166MHz	66MHz	2.5x	On	On	Off	On	On
200MHz	66MHz	2.5x	On	On	Off	Off	On

CPU SPEED SELECTION (CX 6X86MX)							
CPU speed	Clock speed	Multiplier	SW1/1	SW1/2	SW1/3	SW1/4	SW1/5
166MHz	60MHz	2.5x	On	On	Off	On	On
200MHz	66MHz	2.5x	On	On	Off	Off	On
233MHz	75MHz	2.5x	On	On	Off	On	Off
233MHz	66MHz	3x	Off	On	Off	Off	On
266MHz	75MHz	3x	Off	On	Off	On	Off
266MHz	66MHz	3.5x	Off	Off	Off	Off	On

Continued on next page. . .

MICRO-STAR INTERNATIONAL CO., LTD.

MS - 5 1 6 4

... continued from previous page

CPU SPEED SELECTION (AM K5)							
CPU speed	Clock speed	Multiplier	SW1/1	SW1/2	SW1/3	SW1/4	SW1/5
90MHz	60MHz	1.5x	Off	Off	Off	On	On
100MHz	66MHz	1.5x	Off	Off	Off	Off	On
120MHz	60MHz	1.5x	On	Off	Off	On	On
133MHz	66MHz	2x	On	Off	Off	Off	On
150MHz	60MHz	2.5x	On	On	Off	On	On
166MHz	66MHz	2.5x	On	On	Off	Off	On

CPU SPEED SELECTION (AM K6)							
CPU speed	Clock speed	Multiplier	SW1/1	SW1/2	SW1/3	SW1/4	SW1/5
166MHz	66MHz	2.5x	On	On	Off	Off	On
200MHz	66MHz	3x	Off	On	Off	Off	On
233MHz	66MHz	3.5x	Off	Off	Off	Off	On

CPU SPEED SELECTION (INTEL)							
CPU speed	Clock speed	Multiplier	SW1/1	SW1/2	SW1/3	SW1/4	SW1/5
90MHz	60MHz	1.5x	Off	Off	Off	On	On
100MHz	66MHz	1.5x	Off	Off	Off	Off	On
120MHz	60MHz	2x	On	Off	Off	On	On
133MHz	66MHz	2x	On	Off	Off	Off	On
150MHz	60MHz	2.5x	On	On	Off	On	On
166MHz	66MHz	2.5x	On	On	Off	Off	On
200MHz	66MHz	3x	Off	On	Off	Off	On

CPU SPEED SELECTION (INTEL MMX)							
CPU speed	Clock speed	Multiplier	SW1/1	SW1/2	SW1/3	SW1/4	SW1/5
166MHz	66MHz	2.5x	On	On	Off	Off	On
200MHz	66MHz	3x	Off	On	Off	Off	On
233MHz	66MHz	3.5x	Off	Off	Off	Off	On

CPU VOLTAGE SELECTION						
Voltage	V core	SW2/1	SW2/2	SW2/3	SW2/4	SW2/5
3.3v	2.1v	Off	Off	Off	Off	On
3.3v	2.5v	Off	Off	On	Off	On
3.3v	2.8v	Off	On	Off	Off	Off
3.3v	2.9v	Off	On	Off	Off	On
3.3v	3.2v	Off	On	On	Off	Off
3.3v	3.3v	Off	On	On	Off	On
3.5v	3.5v	Off	On	On	On	On

CPU VOLTAGE SELECTION	
Voltage	JV1
Single	Open
Dual	Closed