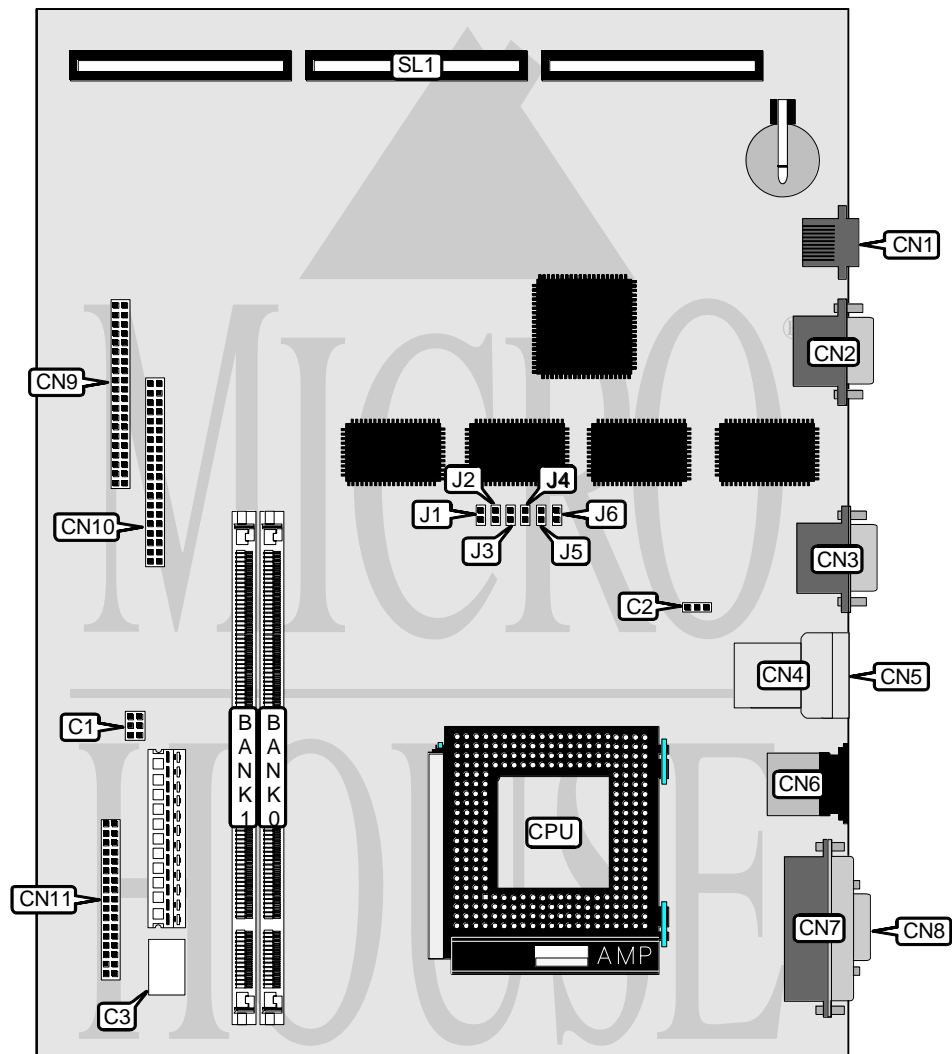


DELL COMPUTER CORPORATION OPTIPLEX GN, OPTIPLEX GN+

Processor	Pentium
Processor Speed	166/200/233MHz
Chip Set	Intel
Video Chip Set	S3
Maximum Onboard Memory	256MB (EDO supported)
Maximum Video Memory	2MB
Cache	256/512KB
BIOS	Phoenix
Dimensions	305mm x 244mm
I/O Options	Ethernet 10BaseT connector, floppy drive interface, IDE interfaces (2), parallel port, PS/2 mouse port, serial ports (2), VGA port, riser slot,
NPU Options	None



Continued on next page. . .

DELL COMPUTER CORPORATION
OPTIPLEX G N, OPTIPLEX G N +

... continued from previous page

CONNECTIONS			
Purpose	Location	Purpose	Location
Chassis fan power	C2	Parallel port	CN7
Ethernet 10BaseT connector	CN1	Serial port 1	CN8
VGA port	CN2	IDE interface 1	CN9
Serial port 2	CN3	IDE interface 2	CN10
USB connector 1	CN4	Floppy drive interface	CN11
USB connector 2	CN5	Riser slot	SL1
PS/2 mouse port	CN6		

USER CONFIGURABLE SETTINGS			
Function	Label	Position	
í Factory configured - do not alter	C1	Unidentified	
í Factory configured - do not alter	C3	Unidentified	
í Factory configured - do not alter	J1	Open	
í Password enabled	J2	Closed	
Password disabled	J2	Open	
í Factory configured - do not alter	J6	Open	

DIMM CONFIGURATION		
Size	Bank 0	Bank 1
16MB	(1) 2M x 64	None
32MB	(1) 4M x 64	None
32MB	(1) 2M x 64	(1) 2M x 64
48MB	(1) 4M x 64	(1) 2M x 64
64MB	(1) 8M x 64	None
64MB	(1) 4M x 64	(1) 4M x 64
80MB	(1) 8M x 64	(1) 2M x 64
96MB	(1) 8M x 64	(1) 4M x 64
128MB	(1) 16M x 64	None
128MB	(1) 8M x 64	(1) 8M x 64
144MB	(1) 16M x 64	(1) 2M x 64
160MB	(1) 16M x 64	(1) 4M x 64
192MB	(1) 16M x 64	(1) 8M x 64
256MB	(1) 16M x 64	(1) 16M x 64

Note: Board accepts EDO memory.

CACHE CONFIGURATION
Note: The location of the 256KB/512KB cache is unidentified.

Continued on next page. . .

DELL COMPUTER CORPORATION
OPTIPLEX GN, OPTIPLEX GN+

... continued from previous page

VIDEO MEMORY CONFIGURATION

Note: 2MB video memory is factory installed and is not configurable. The location is unidentified.

CPU SPEED SELECTION

CPU speed	Clock speed	Multiplier	J3	J4	J5
166MHz	66MHz	2.5x	Open	Open	Closed
200MHz	66MHz	3x	Open	Closed	Open
233MHz	66MHz	3.5x	Closed	Open	Open