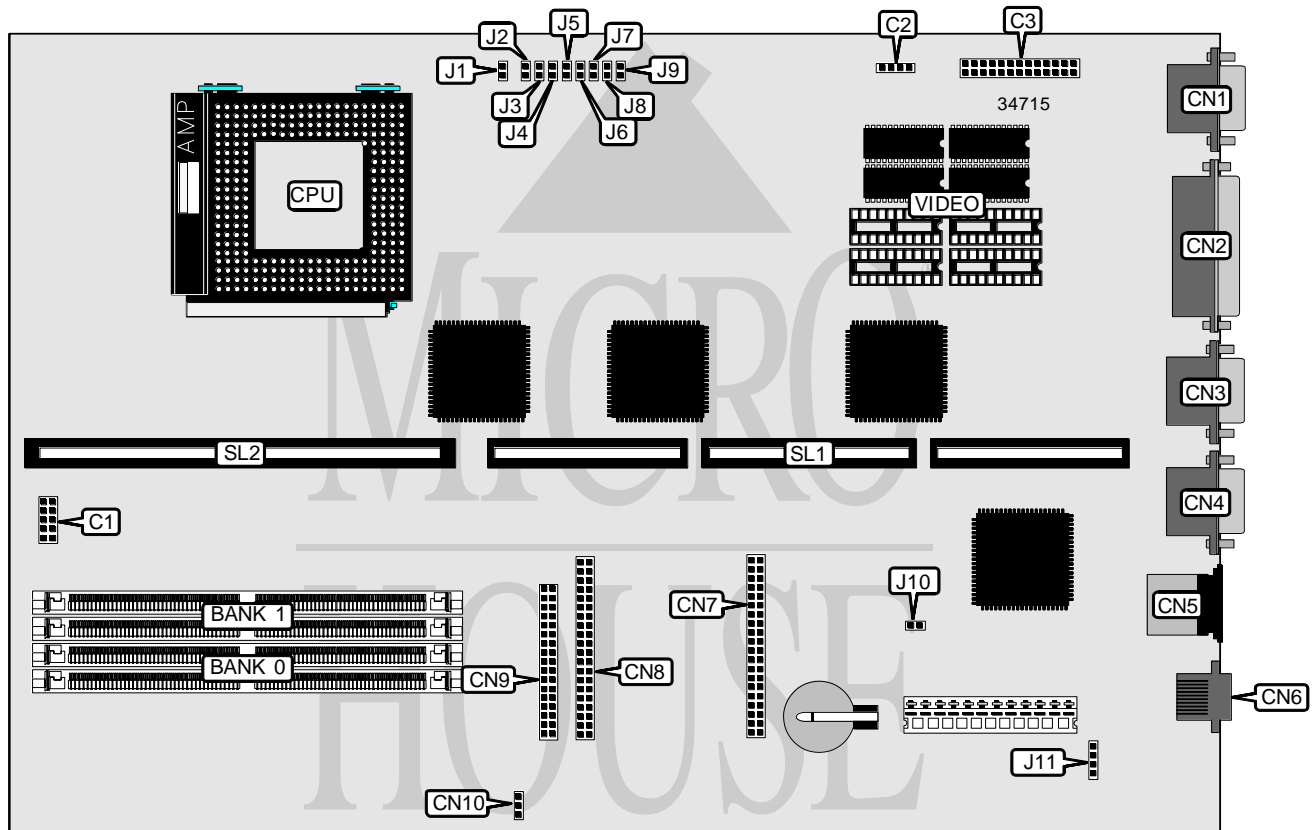


# DELL COMPUTER CORPORATION OPTIPLEX GL, OPTIPLEX GL+

<b>Processor</b>	Pentium
<b>Processor Speed</b>	75/90/100/120/133/150/166MHz
<b>Chip Set</b>	Intel
<b>Video Chip Set</b>	S3
<b>Maximum Onboard Memory</b>	128MB (EDO supported)
<b>Maximum Video Memory</b>	2MB
<b>Cache</b>	256KB
<b>BIOS</b>	Unidentified
<b>Dimensions</b>	330mm x 218mm
<b>I/O Options</b>	Ethernet 10BaseT connector, floppy drive interface, IDE interfaces (2), parallel port, PS/2 mouse port, serial ports (2), VGA feature connector, VGA port, riser slot, cache slot
<b>NPU Options</b>	None



*Continued on next page . . .*

DELL COMPUTER CORPORATION  
OPTIPLEX GL, OPTIPLEX GL+

... continued from previous page

CONNECTIONS			
Purpose	Location	Purpose	Location
Front panel connector	C1	Ethernet 10BaseT connector	CN6
IDE interface LED 1	C2	IDE interface 1	CN7
VGA feature connector	C3	IDE interface 2	CN8
VGA port	CN1	Floppy drive interface	CN9
Parallel port	CN2	Chassis fan power	CN10
Serial port 2	CN3	IDE interface LED 2	J11
Serial port 1	CN4	Riser slot	SL1
PS/2 mouse port	CN5	Cache slot	SL2

USER CONFIGURABLE SETTINGS		
Function	Label	Position
í Factory configured - do not alter	J2	Open
í Password enabled	J3	Closed
Password disabled	J3	Open
í NIC programming normal operation	J10	Open
NIC programming clear	J10	Closed

SIMM CONFIGURATION		
Size	Bank 0	Bank 1
8MB	(2) 1M x 36	None
16MB	(2) 2M x 36	None
16MB	(2) 1M x 36	(2) 1M x 36
24MB	(2) 2M x 36	(2) 1M x 36
32MB	(2) 4M x 36	None
32MB	(2) 2M x 36	(2) 2M x 36
40MB	(2) 4M x 36	(2) 1M x 36
48MB	(2) 4M x 36	(2) 2M x 36
64MB	(2) 8M x 36	None
64MB	(2) 4M x 36	(2) 4M x 36
72MB	(2) 8M x 36	(2) 1M x 36
80MB	(2) 8M x 36	(2) 2M x 36
96MB	(2) 8M x 36	(2) 4M x 36
128MB	(2) 8M x 36	(2) 8M x 36

CACHE CONFIGURATION	
Size	SL1
256KB	256KB module installed

Continued on next page. . .

DELL COMPUTER CORPORATION  
OPTIPLEX GL, OPTIPLEX GL+

... continued from previous page

**VIDEO MEMORY CONFIGURATION**

Note: Board is factory installed with 2MB video memory. The configuration is unidentified.

**CPU SPEED SELECTION**

CPU speed	Clock speed	Multiplier	J1	J4	J5
75MHz	50MHz	1.5x	Open	Open	Open
90MHz	60MHz	1.5x	Open	Open	Open
100MHz	66MHz	1.5x	Open	Open	Open
120MHz	60MHz	2x	Open	Open	Open
133MHz	66MHz	2x	Open	Open	Closed
150MHz	60MHz	2.5x	Open	Closed	Open
166MHz	66MHz	2.5x	Closed	Open	Open

**CPU SPEED SELECTION (CON'T)**

CPU speed	Clock speed	Multiplier	J6	J7	J8	J9
75MHz	50MHz	1.5x	Open	Open	Open	Closed
90MHz	60MHz	1.5x	Open	Open	Closed	Open
100MHz	66MHz	1.5x	Open	Closed	Open	Open
120MHz	60MHz	2x	Closed	Open	Open	Open
133MHz	66MHz	2x	Open	Open	Open	Open
150MHz	60MHz	2.5x	Open	Open	Open	Open
166MHz	66MHz	2.5x	Open	Open	Open	Open