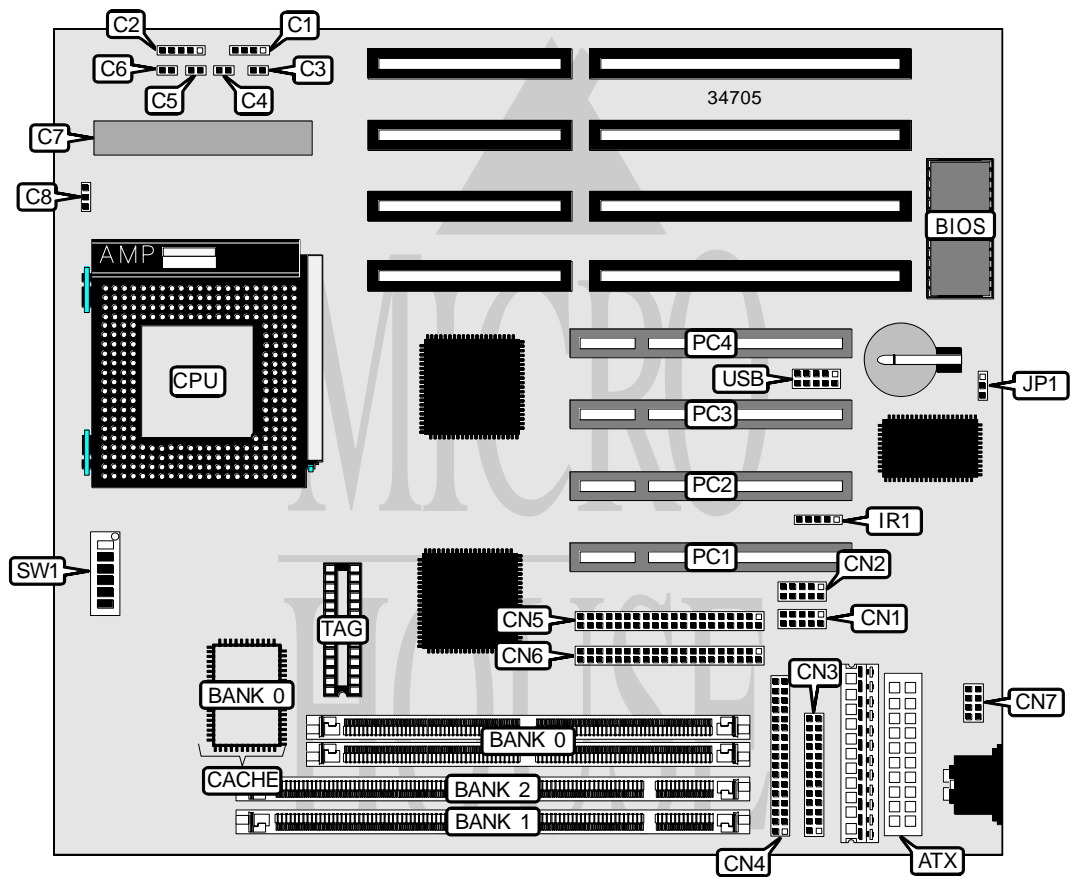


GENOA SYSTEMS CORPORATION

TURBOEXPRESS 586TX LC

Processor	CX 6X86L/CX 686MX/IBM 6X86L/IBM 6X86MX/AM K5/AM K6/Pentium
Processor Speed	75/90/100/120/133/150/166/200/233/266/300MHz
Chip Set	Intel
Video Chip Set	None
Maximum Onboard Memory	256MB (EDO & SDRAM supported)
Maximum Video Memory	None
Cache	512KB
BIOS	Award
Dimensions	254mm x 218mm
I/O Options	32-bit PCI slots (4), floppy drive interface, IDE interfaces (2), parallel port, PS/2 mouse interface, serial ports (2), IR connector, USB connector, ATX power connector, SMM connector
NPU Options	None



Continued on next page. . .

GENOA SYSTEMS CORPORATION
TURBOEXPRESS 586TX LC

... continued from previous page

CONNECTIONS			
Purpose	Location	Purpose	Location
ATX power connector	ATX	Serial port 2	CN2
Speaker	C1	Parallel port	CN3
Power LED & keylock	C2	Floppy drive interface	CN4
IDE interface LED	C3	IDE interface 2	CN5
Turbo LED	C4	IDE interface 1	CN6
Reset switch	C5	PS/2 mouse port	CN7
Soft off power supply	C6	IR connector	IR1
SMM connector	C7	32-bit PCI slots	PC1 – PC4
CPU fan power	C8	USB connector	USB
Serial port 1	CN1		

USER CONFIGURABLE SETTINGS		
Function	Label	Position
CMOS memory normal operation	JP1	Pins 1 & 2 closed
CMOS memory clear	JP1	Pins 2 & 3 closed

SIMM CONFIGURATION	
Size	Bank 0
8MB	(2) 1M x 36
16MB	(2) 2M x 36
32MB	(2) 4M x 36
64MB	(2) 8M x 36
128MB	(2) 16M x 36
256MB	(2) 32M x 36

Note: Board accepts EDO & SDRAM memory.

DIMM CONFIGURATION		
Size	Bank 0	Bank 1
8MB	(1) 1M x 64	None
16MB	(1) 2M x 64	None
16MB	(1) 1M x 64	(1) 1M x 64
24MB	(1) 2M x 64	(1) 1M x 64
32MB	(1) 4M x 64	None
32MB	(1) 2M x 64	(1) 2M x 64
40MB	(1) 4M x 64	(1) 1M x 64
48MB	(1) 4M x 64	(1) 2M x 64
64MB	(1) 8M x 64	None
64MB	(1) 4M x 64	(1) 4M x 64
72MB	(1) 8M x 64	(1) 1M x 64
80MB	(1) 8M x 64	(1) 2M x 64
96MB	(1) 8M x 64	(1) 4M x 64

Continued on next page. . .

GENOA SYSTEMS CORPORATION
 TURBOEXPRESS 586TX LC

... continued from previous page

DIMM CONFIGURATION (CON'T)		
Size	Bank 0	Bank 1
128MB	(1) 16M x 64	None
128MB	(1) 8M x 64	(1) 8M x 64
136MB	(1) 16M x 64	(1) 1M x 64
144MB	(1) 16M x 64	(1) 2M x 64
160MB	(1) 16M x 64	(1) 4M x 64
192MB	(1) 16M x 64	(1) 8M x 64
256MB	(1) 16M x 64	(1) 16M x 64

DIMM/ SIMM CONFIGURATION			
Size	Bank 0	Bank 1	Bank 2
16MB	(2) 1M x 36	(1) 1M x 64	None
16MB	(2) 1M x 36	None	(1) 1M x 64
24MB	(2) 2M x 36	(1) 1M x 64	None
24MB	(2) 1M x 36	None	(1) 2M x 64
32MB	(2) 2M x 36	(1) 2M x 64	None
32MB	(2) 2M x 36	None	(1) 2M x 64
40MB	(2) 4M x 36	(1) 1M x 64	None
40MB	(2) 4M x 36	None	(1) 1M x 64
48MB	(2) 4M x 36	(1) 2M x 64	None
48MB	(2) 4M x 36	None	(1) 2M x 64
64MB	(2) 4M x 36	(1) 4M x 64	None
64MB	(2) 4M x 36	None	(1) 4M x 64
72MB	(2) 8M x 36	(1) 1M x 64	None
72MB	(2) 8M x 36	None	(1) 1M x 64
80MB	(2) 8M x 36	(1) 2M x 64	None
80MB	(2) 8M x 36	None	(1) 2M x 64
96MB	(2) 8M x 36	(1) 4M x 64	None
96MB	(2) 8M x 36	None	(1) 4M x 64
128MB	(2) 8M x 36	(1) 8M x 64	None
128MB	(2) 8M x 36	None	(1) 8M x 64
136MB	(2) 1M x 36	(1) 16M x 64	None
144MB	(2) 2M x 36	(1) 16M x 64	None
160MB	(2) 4M x 36	(1) 16M x 64	None
192MB	(2) 8M x 36	(1) 16M x 64	None
256MB	(2) 16M x 36	(1) 16M x 64	None

Note: Board accepts EDO memory. If SDRAM DIMMs are used in bank 1 or bank 2, bank 0 must be empty.

CACHE CONFIGURATION		
Size	Bank 0	TAG
512KB	(1) 64K x 64	Unidentified

Continued on next page. . .

GENOA SYSTEMS CORPORATION
TURBOEXPRESS 586TX LC

... continued from previous page

CPU SPEED SELECTION (CX 6X86)								
CPU speed	Clock speed	Multiplier	SW1/1	SW1/2	SW1/3	SW1/4	SW1/5	SW1/6
133MHz	55MHz	2x	On	Off	Off	On	On	Off
150MHz	60MHz	2x	On	Off	Off	Off	On	On
166MHz	66MHz	2x	On	Off	Off	On	Off	On

CPU SPEED SELECTION (CX 6X86L)								
CPU speed	Clock speed	Multiplier	SW1/1	SW1/2	SW1/3	SW1/4	SW1/5	SW1/6
133MHz	55MHz	2x	On	Off	Off	Off	Off	On
150MHz	60MHz	2x	On	Off	Off	Off	On	On
166MHz	66MHz	2x	On	Off	Off	On	Off	On

CPU SPEED SELECTION (CX 6X86MX)								
CPU speed	Clock speed	Multiplier	SW1/1	SW1/2	SW1/3	SW1/4	SW1/5	SW1/6
166MHz	60MHz	2.5x	On	On	Off	Off	On	On
166MHz	66MHz	2x	On	Off	Off	On	Off	On
200MHz	66MHz	2.5x	On	On	Off	On	Off	On
233MHz	66MHz	3x	Off	Off	Off	On	Off	On
266MHz	66MHz	4x	Off	On	Off	On	Off	On

CPU SPEED SELECTION (IBM 6X86)								
CPU speed	Clock speed	Multiplier	SW1/1	SW1/2	SW1/3	SW1/4	SW1/5	SW1/6
133MHz	55MHz	2x	On	Off	Off	On	On	Off
150MHz	60MHz	2x	On	Off	Off	Off	On	On
166MHz	66MHz	2x	On	Off	Off	On	Off	On

CPU SPEED SELECTION (IBM 6X86L)								
CPU speed	Clock speed	Multiplier	SW1/1	SW1/2	SW1/3	SW1/4	SW1/5	SW1/6
133MHz	55MHz	2x	On	Off	Off	Off	Off	On
150MHz	60MHz	2x	On	Off	Off	Off	On	On
166MHz	66MHz	2x	On	Off	Off	On	Off	On

CPU SPEED SELECTION (IBM 6X86MX)								
CPU speed	Clock speed	Multiplier	SW1/1	SW1/2	SW1/3	SW1/4	SW1/5	SW1/6
166MHz	60MHz	2.5x	On	On	Off	Off	On	On
166MHz	66MHz	2x	On	Off	Off	On	Off	On
200MHz	66MHz	2.5x	On	On	Off	On	Off	On
233MHz	66MHz	3x	Off	Off	Off	On	Off	On
266MHz	66MHz	4x	Off	On	Off	On	Off	On

Continued on next page...

GENOA SYSTEMS CORPORATION
TURBOEXPRESS 586TX LC

... continued from previous page

CPU SPEED SELECTION (AM K5)								
CPU speed	Clock speed	Multiplier	SW1/1	SW1/2	SW1/3	SW1/4	SW1/5	SW1/6
75MHz	50MHz	1.5x	Off	Off	Off	On	On	On
90MHz	60MHz	1.5x	Off	Off	Off	Off	On	On
100MHz	66MHz	1.5x	Off	Off	Off	On	Off	On
120MHz	60MHz	1.5x	Off	Off	Off	Off	On	On
133MHz	66MHz	1.5x	Off	Off	Off	On	Off	On
150MHz	60MHz	1.75x	On	On	Off	Off	On	On
166MHz	66MHz	1.75x	On	On	Off	On	Off	On

CPU SPEED SELECTION (AM K6)								
CPU speed	Clock speed	Multiplier	SW1/1	SW1/2	SW1/3	SW1/4	SW1/5	SW1/6
166MHz	66MHz	2.5x	On	On	Off	On	Off	On
200MHz	66MHz	3x	Off	On	Off	On	Off	On
233MHz	66MHz	3.5x	Off	Off	Off	On	Off	On
266MHz	66MHz	4x	On	Off	On	On	Off	On
300MHz	66MHz	4.5x	On	On	On	On	Off	On

CPU SPEED SELECTION (INTEL)								
CPU speed	Clock speed	Multiplier	SW1/1	SW1/2	SW1/3	SW1/4	SW1/5	SW1/6
75MHz	50MHz	1.5x	Off	Off	Off	On	On	On
90MHz	60MHz	1.5x	Off	Off	Off	Off	On	On
100MHz	66MHz	1.5x	Off	Off	Off	On	Off	On
120MHz	60MHz	2x	On	Off	Off	Off	On	On
133MHz	66MHz	2x	On	Off	Off	On	Off	On
150MHz	60MHz	2.5x	On	On	Off	Off	On	On
166MHz	66MHz	2.5x	On	On	Off	On	Off	On
200MHz	66MHz	3x	Off	Off	Off	On	Off	On

CPU SPEED SELECTION (INTEL MMX)								
CPU speed	Clock speed	Multiplier	SW1/1	SW1/2	SW1/3	SW1/4	SW1/5	SW1/6
166MHz	66MHz	2.5x	On	On	Off	On	Off	On
200MHz	66MHz	3x	Off	Off	Off	On	Off	On
233MHz	66MHz	3.5x	Off	Off	Off	On	Off	On