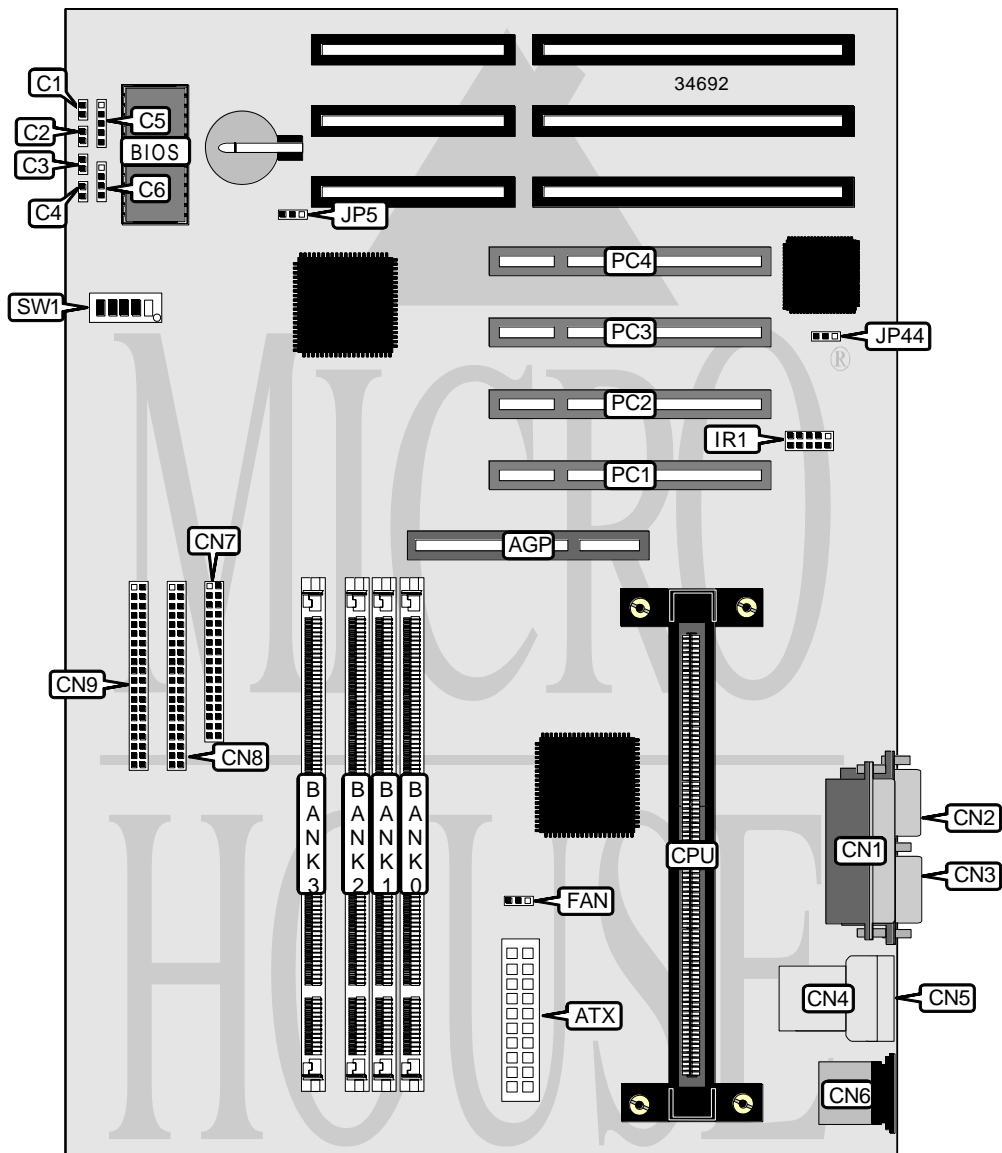


SOYO COMPUTER CO., LTD.

6 K B

Processor	Pentium II
Processor Speed	233/266/300/333MHz
Chip Set	Intel
Video Chip Set	None
Maximum Onboard Memory	512MB (EDO & SDRAM supported)
Maximum Video Memory	None
Cache	256/512KB (located on Pentium II CPU)
BIOS	Unidentified
Dimensions	305mm x 244mm
I/O Options	32-bit PCI slots (4), floppy drive interface, IDE interfaces (2), parallel port, PS/2 mouse port, serial ports (2), IR connector, USB connectors (2), ATX power connector, AGP slot
NPU Options	None



Continued on next page. . .

... continued from previous page

CONNECTIONS			
Purpose	Location	Purpose	Location
AGP slot	AGP	USB connector 1	CN4
ATX power connector	ATX	USB connector 2	CN5
Reset switch	C1	PS/2 mouse port	CN6
Soft off power supply	C2	Floppy drive interface	CN7
Turbo LED	C3	IDE interface 2	CN8
IDE interface LED	C4	IDE interface 1	CN9
Power LED & keylock	C5	CPU fan power	FAN
Speaker	C6	IR connector	IR1
Parallel port	CN1	Wake on LAN connector	JP44
Serial port 2	CN2	32-bit PCI slots	PC1 – PC4
Serial port 1	CN3		

USER CONFIGURABLE SETTINGS		
Function	Label	Position
í CMOS memory normal operation	JP5	Pins 1 & 2 closed
CMOS memory clear	JP5	Pins 2 & 3 closed

DIMM CONFIGURATION				
Size	Bank 0	Bank 1	Bank 2	Bank 3
8MB	(1) 1M x 64	None	None	None
16MB	(1) 2M x 64	None	None	None
16MB	(1) 1M x 64	(1) 1M x 64	None	None
24MB	(1) 2M x 64	(1) 1M x 64	None	None
24MB	(1) 1M x 64	(1) 1M x 64	(1) 1M x 64	None
32MB	(1) 2M x 64	(1) 2M x 64	None	None
32MB	(1) 4M x 64	None	None	None
32MB	(1) 1M x 64	(1) 1M x 64	(1) 1M x 64	(1) 1M x 64
40MB	(1) 2M x 64	(1) 2M x 64	(1) 1M x 64	None
40MB	(1) 2M x 64	(1) 1M x 64	(1) 1M x 64	(1) 1M x 64
40MB	(1) 4M x 64	(1) 1M x 64	None	None
48MB	(1) 2M x 64	(1) 2M x 64	(1) 2M x 64	None
48MB	(1) 2M x 64	(1) 2M x 64	(1) 1M x 64	(1) 1M x 64
48MB	(1) 4M x 64	(1) 1M x 64	(1) 1M x 64	None
56MB	(1) 4M x 64	(1) 2M x 64	(1) 1M x 64	None
56MB	(1) 4M x 64	(1) 1M x 64	(1) 1M x 64	(1) 1M x 64
64MB	(1) 2M x 64	(1) 2M x 64	(1) 2M x 64	(1) 2M x 64
64MB	(1) 4M x 64	(1) 4M x 64	None	None
64MB	(1) 8M x 64	None	None	None
80MB	(1) 4M x 64	(1) 2M x 64	(1) 2M x 64	(1) 2M x 64
80MB	(1) 4M x 64	(1) 4M x 64	(1) 1M x 64	(1) 1M x 64
80MB	(1) 8M x 64	(1) 2M x 64	None	None

Continued on next page...

... continued from previous page

DIMM CONFIGURATION (CON'T)				
Size	Bank 0	Bank 1	Bank 2	Bank 3
80MB	(1) 8M x 64	(1) 1M x 64	(1) 1M x 64	None
96MB	(1) 4M x 64	(1) 4M x 64	(1) 2M x 64	(1) 2M x 64
96MB	(1) 4M x 64	(1) 4M x 64	(1) 4M x 64	None
96MB	(1) 8M x 64	(1) 2M x 64	(1) 1M x 64	(1) 1M x 64
112MB	(1) 4M x 64	(1) 4M x 64	(1) 4M x 64	(1) 2M x 64
112MB	(1) 8M x 64	(1) 4M x 64	(1) 2M x 64	None
112MB	(1) 8M x 64	(1) 4M x 64	(1) 1M x 64	(1) 1M x 64
128MB	(1) 16M x 64	None	None	None
128MB	(1) 4M x 64	(1) 4M x 64	(1) 4M x 64	(1) 4M x 64
128MB	(1) 8M x 64	(1) 4M x 64	(1) 4M x 64	None
128MB	(1) 8M x 64	(1) 8M x 64	None	None
160MB	(1) 16M x 64	(1) 2M x 64	(1) 1M x 64	(1) 1M x 64
192MB	(1) 16M x 64	(1) 4M x 64	(1) 4M x 64	None
192MB	(1) 8M x 64	(1) 8M x 64	(1) 4M x 64	(1) 4M x 64
192MB	(1) 8M x 64	(1) 8M x 64	(1) 8M x 64	None
224MB	(1) 16M x 64	(1) 8M x 64	(1) 2M x 64	(1) 2M x 64
224MB	(1) 16M x 64	(1) 8M x 64	(1) 4M x 64	None
256MB	(1) 16M x 64	(1) 16M x 64	None	None
256MB	(1) 16M x 64	(1) 8M x 64	(1) 4M x 64	(1) 4M x 64
256MB	(1) 16M x 64	(1) 8M x 64	(1) 8M x 64	None
256MB	(1) 8M x 64	(1) 8M x 64	(1) 8M x 64	(1) 8M x 64
288MB	(1) 16M x 64	(1) 16M x 64	(1) 4M x 64	None
320MB	(1) 16M x 64	(1) 8M x 64	(1) 8M x 64	(1) 8M x 64
384MB	(1) 16M x 64	(1) 16M x 64	(1) 16M x 64	None
384MB	(1) 16M x 64	(1) 16M x 64	(1) 8M x 64	(1) 8M x 64
448MB	(1) 16M x 64	(1) 16M x 64	(1) 16M x 64	(1) 8M x 64
512MB	(1) 16M x 64	(1) 16M x 64	(1) 16M x 64	(1) 16M x 64

Note: Board accepts EDO & SDRAM memory.

CACHE CONFIGURATION
Note: 256KB/512KB cache is located on the Pentium II CPU.

CPU SPEED SELECTION							
CPU speed	Clock speed	Multiplier	SW1/1	SW1/2	SW1/3	SW1/4	SW1/5
233MHz	66MHz	3.5x	Off	On	Off	Off	On
266MHz	66MHz	4x	Off	On	On	On	Off
300MHz	66MHz	4.5x	Off	On	Off	On	Off
333MHz	66MHz	5x	Off	On	On	Off	Off