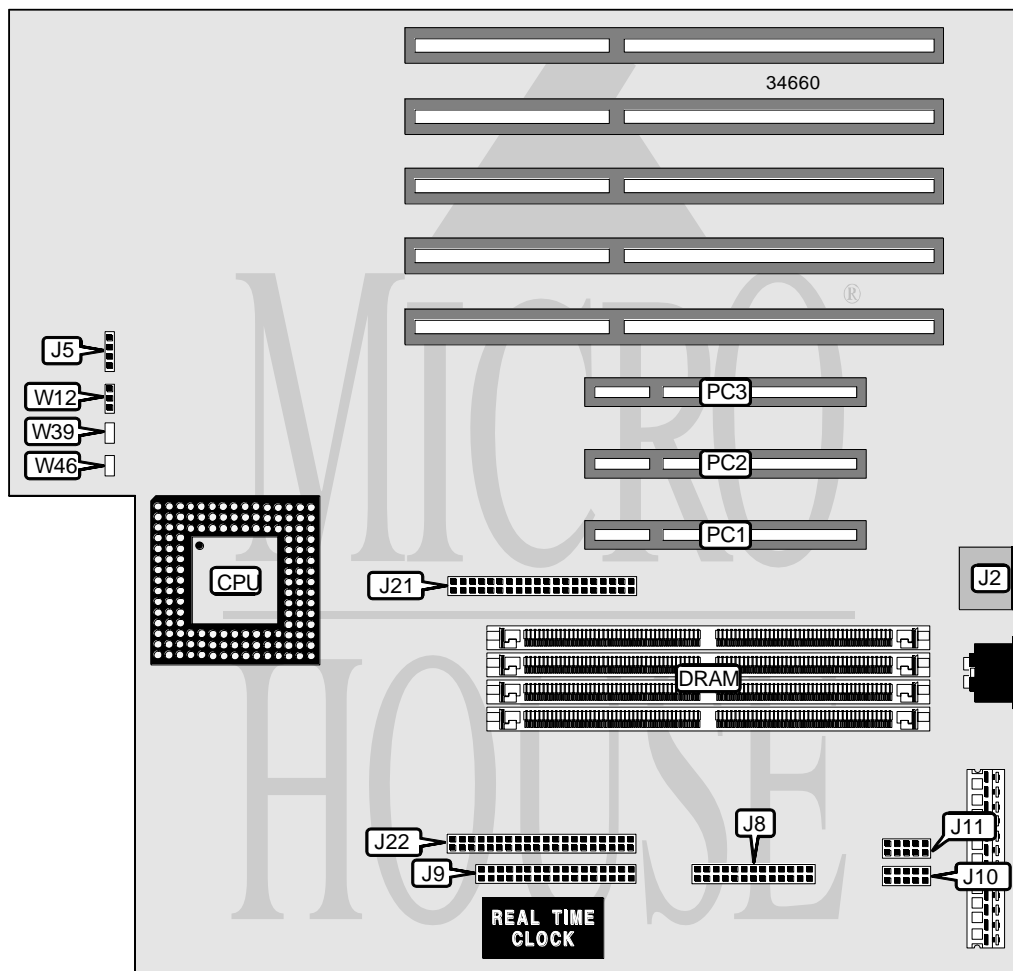


IBM CORPORATION PC SERVER 300 (TYPE 8640) ONO, 1NO, 1NJ, ONJ

Processor	80486SX/80486DX/80486DX2/80486DX4/P24T
Processor Speed	25/33/50(internal)/66(internal)/75(internal)/100(internal)MHz
Chip Set	Unidentified
Video Chip Set	None
Maximum Onboard Memory	128MB
Maximum Video Memory	None
Cache	128/256KB
BIOS	Unidentified
Dimensions	355mm x 304mm
I/O Options	32-bit PCI slots (3), floppy drive interface, IDE interfaces (2), parallel port, PS/2 mouse port, serial ports (2)
NPU Options	None



THE LOCATION OF ALL JUMPERS ARE UNIDENTIFIED

Continued on next page . . .

IBM CORPORATION

PC SERVER 300 (TYPE 8640) ONO, 1NO, 1NJ, ONJ

... continued from previous page

CONNECTIONS			
Purpose	Location	Purpose	Location
PS/2 mouse port	J2	IDE interface 1	J21
Speaker	J5	IDE interface 2	J22
Parallel port	J8	Power LED	W12
Floppy drive interface	J9	PCI IDE interface LED	W39
Serial port 2	J10	ISA IDE interface LED	W46
Serial port 1	J11	32-bit PCI slots	PC1 – PC3

USER CONFIGURABLE SETTINGS		
Function	Label	Position
í Secondary cache write select write back	W1	Pins 2 & 3 closed
Secondary cache write select write through	W1	Pins 1 & 2 closed
í Internal cache write select write through	W4	Open
Internal cache write select write back	W4	Closed
í BIOS normal operation	W6	Pins 2 & 3 closed
BIOS recovery mode	W6	Pins 1 & 2 closed
í Factory configured - do not alter	W8	Closed
í PS/2 mouse enabled	W10	Closed
PS/2 mouse disabled	W10	Open
DPU generates parity	W17	Pins 1 & 2 closed
CPU generates parity	W17	Pins 2 & 3 closed
í DPU parity error disabled	W18	Pins 2 & 3 closed
DPU parity error enabled	W18	Pins 1 & 2 closed
í Cache enabled	W21	Open
Cache disabled	W21	Closed
í PCI IDE IRQ14 enabled	W35	Closed
PCI IDE IRQ14 disabled	W35	Open
í PCI IDE PCI INT A disabled	W37	Closed
PCI IDE PCI INT A enabled	W37	Open
í PCI IRQ15 disabled	W38	Open
PCI IRQ15 enabled	W38	Closed
ISA IDE IRQ select IRQ14	W42	Pins 1 & 2 closed
ISA IDE IRQ select IRQ15	W42	Pins 2 & 3 closed

Continued on next page. . .

IBM CORPORATION

PC SERVER 300 (TYPE 8640) ONO, 1NO, 1NJ, ONJ

... continued from previous page

SIMM CONFIGURATION				
Size	Bank 0	Bank 1	Bank 2	Bank 3
4MB	(1) 1M x 36	None	None	None
8MB	(1) 2M x 36	None	None	None
8MB	(1) 1M x 36	(1) 1M x 36	None	None
12MB	(1) 2M x 36	(1) 1M x 36	None	None
12MB	(1) 1M x 36	(1) 1M x 36	(1) 1M x 36	None
12MB	(1) 1M x 36	(1) 2M x 36	None	None
16MB	(1) 2M x 36	(1) 1M x 36	(1) 1M x 36	None
16MB	(1) 2M x 36	(1) 2M x 36	None	None
16MB	(1) 1M x 36	(1) 1M x 36	(1) 1M x 36	(1) 1M x 36
20MB	(1) 4M x 36	(1) 1M x 36	None	None
20MB	(1) 2M x 36	(1) 1M x 36	(1) 1M x 36	(1) 1M x 36
24MB	(1) 4M x 36	(1) 1M x 36	(1) 1M x 36	None
24MB	(1) 4M x 36	(1) 2M x 36	None	None
24MB	(1) 2M x 36	(1) 2M x 36	(1) 2M x 36	None
28MB	(1) 4M x 36	(1) 1M x 36	(1) 1M x 36	(1) 1M x 36
32MB	(1) 8M x 36	None	None	None
32MB	(1) 4M x 36	(1) 2M x 36	(1) 2M x 36	None
32MB	(1) 4M x 36	(1) 4M x 36	None	None
32MB	(1) 2M x 36	(1) 2M x 36	(1) 2M x 36	(1) 2M x 36
36MB	(1) 8M x 36	(1) 1M x 36	None	None
40MB	(1) 8M x 36	(1) 1M x 36	(1) 1M x 36	None
40MB	(1) 8M x 36	(1) 2M x 36	None	None
40MB	(1) 4M x 36	(1) 2M x 36	(1) 2M x 36	(1) 2M x 36
44MB	(1) 8M x 36	(1) 1M x 36	(1) 1M x 36	(1) 1M x 36
48MB	(1) 8M x 36	(1) 2M x 36	(1) 2M x 36	None
48MB	(1) 8M x 36	(1) 4M x 36	None	None
48MB	(1) 4M x 36	(1) 4M x 36	(1) 4M x 36	None
56MB	(1) 8M x 36	(1) 2M x 36	(1) 2M x 36	(1) 2M x 36
64MB	(1) 8M x 36	(1) 4M x 36	(1) 4M x 36	None
64MB	(1) 8M x 36	(1) 8M x 36	None	None
64MB	(1) 4M x 36	(1) 4M x 36	(1) 4M x 36	(1) 4M x 36
80MB	(1) 8M x 36	(1) 4M x 36	(1) 4M x 36	(1) 4M x 36
96MB	(1) 8M x 36	(1) 8M x 36	(1) 8M x 36	None
112MB	(1) 4M x 36	(1) 8M x 36	(1) 8M x 36	(1) 8M x 36
128MB	(1) 8M x 36	(1) 8M x 36	(1) 8M x 36	(1) 8M x 36

Continued on next page. . .

IBM CORPORATION
 PC SERVER 300 (TYPE 8640) ONO, 1NO, 1NJ, ONJ

... continued from previous page

CACHE CONFIGURATION

Note: The location of the cache is unidentified.

CACHE JUMPER CONFIGURATION

Size	W5	W22	W23
128KB	Open	Closed	Open
256KB	Closed	Open	Closed

TAG CONFIGURATION

Type	W24	W26
7-bit	Open	Closed
8-bit	Closed	Closed
í 9-bit	Closed	Open
Reserved	Open	Open

CPU SPEED SELECTION

Speed	W16	W20
25MHz	Open	Closed
33MHz	Closed	Open
50iMHz	Open	Closed
66iMHz	Closed	Open
75iMHz	Open	Closed
100iMHz	Closed	Open

CPU TYPE SELECTION

Type	W2	W3
80486SX	Pins 2 & 3 closed	Closed
80486DX	Pins 1 & 2, 3 & 4 closed	Closed
80486DX2	Pins 1 & 2, 3 & 4 closed	Closed
80486DX4	Pins 1 & 2, 3 & 4 closed	Closed
P24T	Pins 1 & 2, 3 & 4 closed	Open

CPU MULTIPLIER SELECTION

Multiplier	W33
80486DX4	Pins 1 & 2 closed
80486DX4 (2x)	Pins 2 & 3 closed
80486SX/DX/DX2/DX4 (3x)	Open

IDE DMA CHANNEL SELECTION

Channel	W43
í PIO transfer	Open
6	Pins 1 & 2 closed
7	Pins 2 & 3 closed

PCI IRQ JUMPER SELECTION

Note: The jumper settings for J101 are unidentified.

