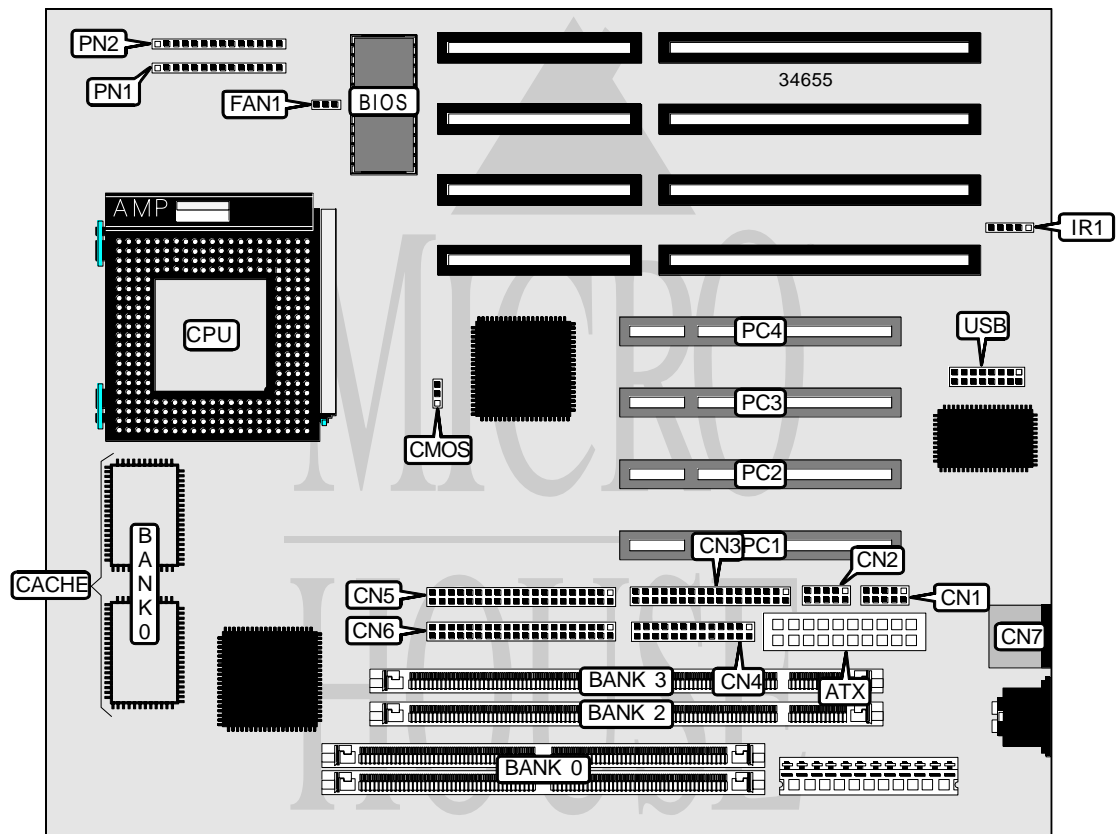


# ABIT COMPUTER CORPORATION

## AB - P X 5

<b>Processor</b>	CX 6X86/CX 6X86L/CX 686MX/AM K5/AM K6/Pentium
<b>Processor Speed</b>	100/120/133/150/166/180/200/233/266/300MHz
<b>Chip Set</b>	Intel
<b>Video Chip Set</b>	None
<b>Maximum Onboard Memory</b>	256MB (EDO supported)
<b>Maximum Video Memory</b>	1MB
<b>Cache</b>	512KB
<b>BIOS</b>	Award
<b>Dimensions</b>	254mm x 218mm
<b>I/O Options</b>	32-bit PCI slots (4), floppy drive interface, green PC connector, IDE interfaces (2), parallel port, PS/2 mouse port, serial ports (2), IR connector, VRM connector, USB connector, ATX power connector
<b>NPU Options</b>	None



*Continued on next page . . .*

ABIT COMPUTER CORPORATION  
 A B - P X 5

... continued from previous page

CONNECTIONS			
Purpose	Location	Purpose	Location
ATX power connector	ATX	32-bit PCI slots	PC1 - PC4
Serial port 1	CN1	Power LED & keylock	PN1/pins 1 - 5
Serial port 2	CN2	IDE interface LED	PN1/pins 7 & 8
Floppy drive interface	CN3	Soft off power supply	PN1/pins 10 & 11
Parallel port	CN4	Green PC connector	PN1/pins 13 & 14
IDE interface 2	CN5	Reset switch	PN2/pins 1 & 2
IDE interface 1	CN6	Speaker	PN2/pins 4 - 7
PS/2 mouse port	CN7	Green PC LED	PN2/pins 9 & 10
CPU fan power	FAN1	USB connector	USB
IR connector	IR1		

USER CONFIGURABLE SETTINGS		
Function	Label	Position
CMOS memory normal operation	CMOS	Pins 1 & 2 closed
CMOS memory clear	CMOS	Pins 2 & 3 closed

SIMM CONFIGURATION	
Size	Bank 0
8MB	(2) 1M x 36
16MB	(2) 2M x 36
32MB	(2) 4M x 36
64MB	(2) 8M x 36
128MB	(2) 16M x 36

Note: Board accepts EDO memory.

DIMM CONFIGURATION		
Size	Bank 2	Bank 3
8MB	(1) 1M x 64	None
16MB	(1) 2M x 64	None
16MB	(1) 1M x 64	(1) 1M x 64
24MB	(1) 2M x 64	(1) 1M x 64
32MB	(1) 4M x 64	None
32MB	(1) 2M x 64	(1) 2M x 64
40MB	(1) 4M x 64	(1) 1M x 64
48MB	(1) 4M x 64	(1) 2M x 64
64MB	(1) 8M x 64	None
64MB	(1) 4M x 64	(1) 4M x 64
72MB	(1) 8M x 64	(1) 1M x 64
80MB	(1) 8M x 64	(1) 2M x 64
96MB	(1) 8M x 64	(1) 4M x 64
128MB	(1) 16M x 64	None
128MB	(1) 8M x 64	(1) 8M x 64
136MB	(1) 16M x 64	(1) 1M x 64

Continued on next page...

ABIT COMPUTER CORPORATION  
A B - P X 5

... continued from previous page

DIMM CONFIGURATION (CON'T)		
Size	Bank 2	Bank 2
144MB	(1) 16M x 64	(1) 2M x 64
160MB	(1) 16M x 64	(1) 4M x 64
192MB	(1) 16M x 64	(1) 8M x 64
256MB	(1) 16M x 64	(1) 16M x 64

CACHE CONFIGURATION	
Size	Bank 0
512KB	(2) 64K x 32