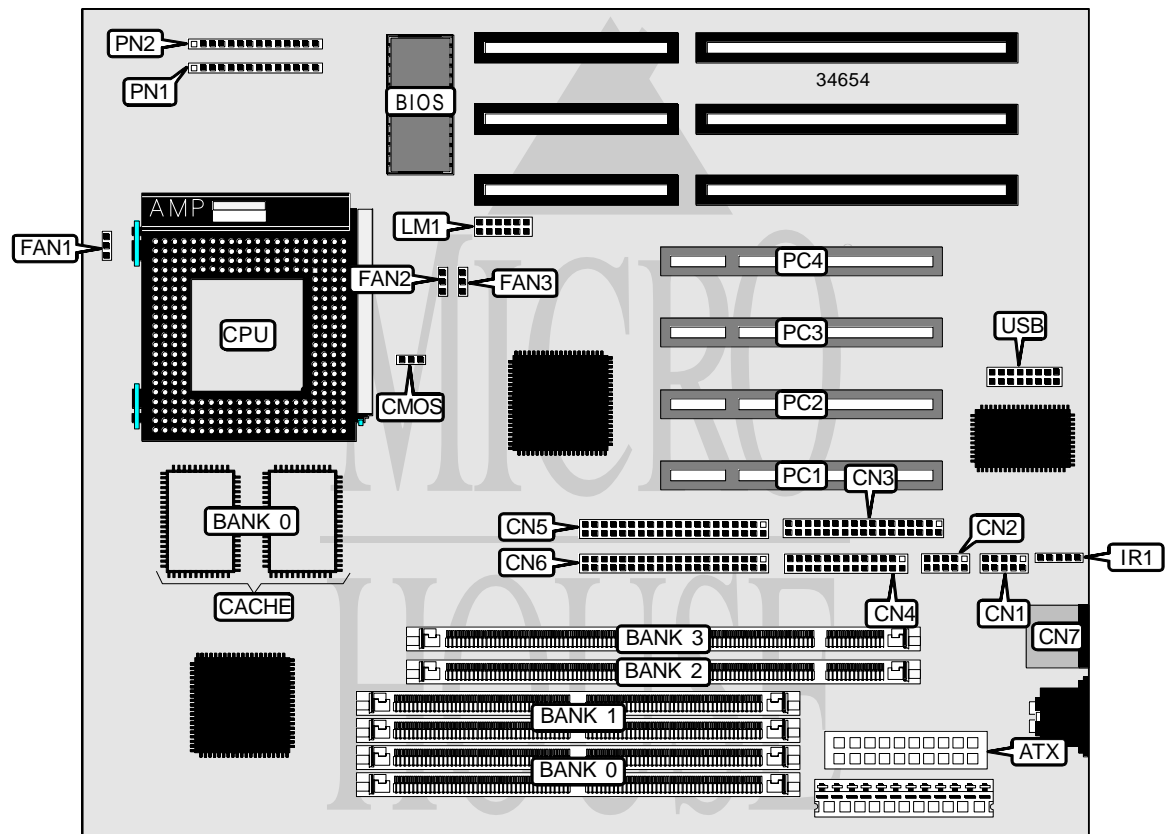


ABIT COMPUTER CORPORATION

AB-TX5

Processor	CX 6X86/CX 6X86L/CX 686MX/AM K5/AM K6/Pentium
Processor Speed	100/120/133/150/166/180/200/233/266MHz
Chip Set	Intel
Video Chip Set	None
Maximum Onboard Memory	256MB (EDO supported)
Maximum Video Memory	1MB
Cache	512KB
BIOS	Award
Dimensions	254mm x 218mm
I/O Options	32-bit PCI slots (4), floppy drive interface, green PC connector, IDE interfaces (2), parallel port, PS/2 mouse port, serial ports (2), IR connector, USB connector, ATX power connector
NPU Options	None



Continued on next page . . .

ABIT COMPUTER CORPORATION
 AB - TX 5

... continued from previous page

CONNECTIONS			
Purpose	Location	Purpose	Location
ATX power connector	ATX	IR connector	IR1
Serial port 1	CN1	Intelligent System Connector	LM1
Serial port 2	CN2	32-bit PCI slots	PC1 - -PC4
Floppy drive interface	CN3	Power LED & keylock	PN1/pins 1 - 5
Parallel port	CN4	IDE interface LED	PN1/pins 7 & 8
IDE interface 2	CN5	Soft off power supply	PN1/pins 10 & 11
IDE interface 1	CN6	Green PC connector	PN1/pins 13 & 14
PS/2 mouse port	CN7	Reset switch	PN2/pins 1 & 2
CPU fan power	FAN1	Speaker	PN2/pins 4 - 7
Chassis fan power	FAN2	Green PC LED	PN2/pins 9 & 10
Chassis fan power	FAN3	USB connector	USB

USER CONFIGURABLE SETTINGS		
Function	Label	Position
í CMOS memory normal operation	CMOS	Pins 1 & 2 closed
CMOS memory clear	CMOS	Pins 2 & 3 closed

SIMM CONFIGURATION		
Size	Bank 0	Bank 1
8MB	(2) 1M x 36	None
16MB	(2) 2M x 36	None
16MB	(2) 1M x 36	(2) 1M x 36
24MB	(2) 2M x 36	(2) 1M x 36
32MB	(2) 4M x 36	None
32MB	(2) 2M x 36	(2) 2M x 36
40MB	(2) 4M x 36	(2) 1M x 36
48MB	(2) 4M x 36	(2) 2M x 36
64MB	(2) 8M x 36	None
64MB	(2) 4M x 36	(2) 4M x 36
72MB	(2) 8M x 36	(2) 1M x 36
80MB	(2) 8M x 36	(2) 2M x 36
96MB	(2) 8M x 36	(2) 4M x 36
128MB	(2) 8M x 36	(2) 8M x 36
128MB	(2) 16M x 36	None
136MB	(2) 16M x 36	(2) 1M x 36
144MB	(2) 16M x 36	(2) 2M x 36
160MB	(2) 16M x 36	(2) 4M x 36
192MB	(2) 16M x 36	(2) 8M x 36
256MB	(2) 16M x 36	(2) 16M x 36

Note: Board accepts EDO memory.

Continued on next page. . .

ABIT COMPUTER CORPORATION
 AB-TX5

... continued from previous page

DIMM CONFIGURATION		
Size	Bank 2	Bank 3
8MB	(1) 1M x 64	None
16MB	(1) 2M x 64	None
16MB	(1) 1M x 64	(1) 1M x 64
24MB	(1) 2M x 64	(1) 1M x 64
32MB	(1) 4M x 64	None
32MB	(1) 2M x 64	(1) 2M x 64
40MB	(1) 4M x 64	(1) 1M x 64
48MB	(1) 4M x 64	(1) 2M x 64
64MB	(1) 8M x 64	None
64MB	(1) 4M x 64	(1) 4M x 64
72MB	(1) 8M x 64	(1) 1M x 64
80MB	(1) 8M x 64	(1) 2M x 64
96MB	(1) 8M x 64	(1) 4M x 64
128MB	(1) 16M x 64	None
128MB	(1) 8M x 64	(1) 8M x 64
136MB	(1) 16M x 64	(1) 1M x 64
144MB	(1) 16M x 64	(1) 2M x 64
160MB	(1) 16M x 64	(1) 4M x 64
192MB	(1) 16M x 64	(1) 8M x 64
256MB	(1) 16M x 64	(1) 16M x 64

CACHE CONFIGURATION	
Size	Bank 0
512KB	(2) 64K x 32