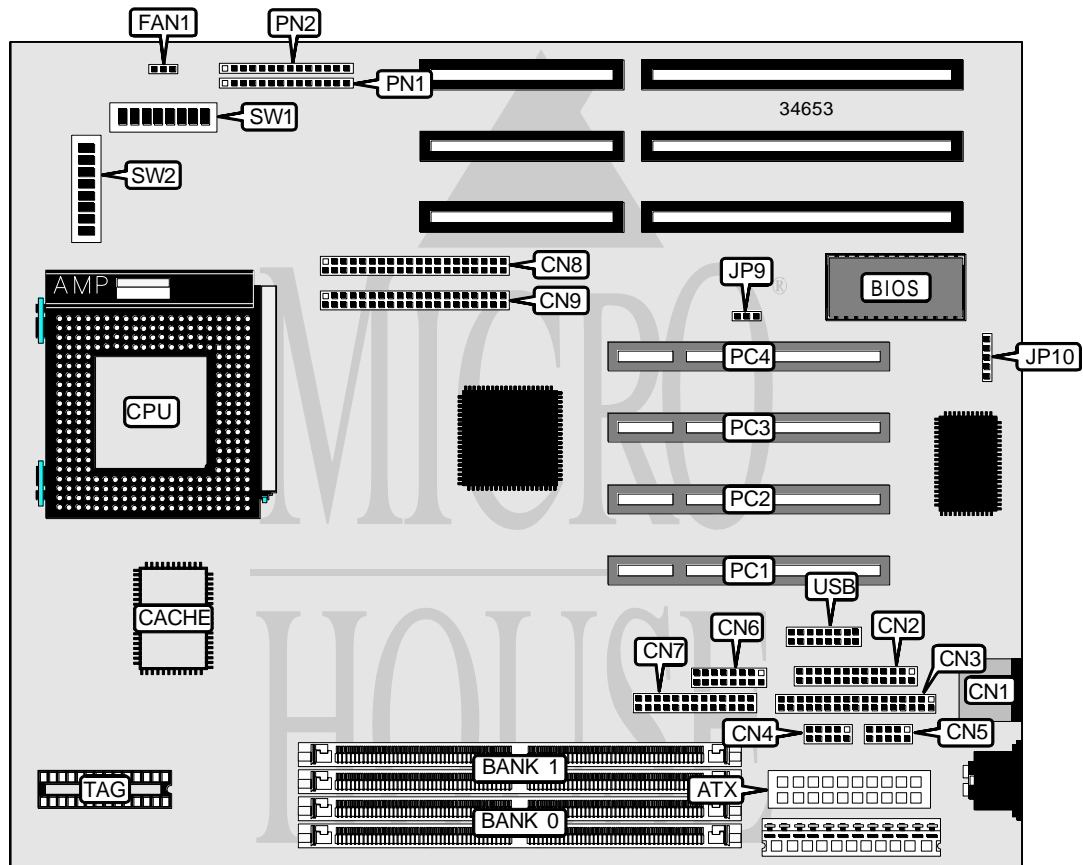


ABIT COMPUTER CORPORATION

AB - P D 5 N

Processor	CX 6X86/CX 6X86L/CX 686MX/IBM 6X86/IBM 6X86L/IBM 686MX/ AM K5/AM K6/Pentium
Processor Speed	75/90/100/120/133/150/166/200/233/266MHz
Chip Set	SIS
Video Chip Set	Unidentified
Maximum Onboard Memory	256MB (EDO supported)
Maximum Video Memory	Unidentified
Cache	256/512KB
BIOS	Award
Dimensions	254mm x 218mm
I/O Options	32-bit PCI slots (4), floppy drive interface, green PC connector, IDE interfaces (2), parallel port, PS/2 mouse port, serial ports (2), VGA feature connector, VGA port, IR connector, USB connector, ATX power connector
NPU Options	None



Continued on next page. . .

ABIT COMPUTER CORPORATION
 AB - PD 5 N

. . . continued from previous page

CONNECTIONS			
Purpose	Location	Purpose	Location
ATX power connector	ATX	IR connector	JP10
PS/2 mouse port	CN1	32-bit PCI slots	PC1 - -PC4
Parallel port	CN2	Power LED & keylock	PN1/pins 1 - 5
Floppy drive interface	CN3	IDE interface LED	PN1/pins 7 & 8
Serial port 1	CN4	Soft off power supply	PN1/pins 10 & 11
Serial port 2	CN5	Green PC connector	PN1/pins 13 & 14
VGA interface	CN6	Reset switch	PN2/pins 1 & 2
VGA feature connector	CN7	Speaker	PN2/pins 4 - 7
IDE connector 1	CN8	Green PC LED	PN2/pins 9 & 10
IDE connector 2	CN9	USB connector	USB
Chassis fan power	FAN1		

USER CONFIGURABLE SETTINGS		
Function	Label	Position
i CMOS memory normal operation	JP9	Pins 1 & 2 closed
CMOS memory clear	JP9	Pins 2 & 3 closed
i Factory configured - do not alter	SW2/4	Off
i Factory configured - do not alter	SW2/5	Off

SIMM CONFIGURATION		
Size	Bank 0	Bank 1
8MB	(2) 1M x 36	None
16MB	(2) 2M x 36	None
16MB	(2) 1M x 36	(2) 1M x 36
24MB	(2) 2M x 36	(2) 1M x 36
32MB	(2) 4M x 36	None
32MB	(2) 2M x 36	(2) 2M x 36
40MB	(2) 4M x 36	(2) 1M x 36
48MB	(2) 4M x 36	(2) 2M x 36
64MB	(2) 8M x 36	None
64MB	(2) 4M x 36	(2) 4M x 36
72MB	(2) 8M x 36	(2) 1M x 36
80MB	(2) 8M x 36	(2) 2M x 36
96MB	(2) 8M x 36	(2) 4M x 36
128MB	(2) 8M x 36	(2) 8M x 36
128MB	(2) 16M x 36	None
136MB	(2) 16M x 36	(2) 1M x 36
144MB	(2) 16M x 36	(2) 2M x 36
160MB	(2) 16M x 36	(2) 4M x 36
192MB	(2) 16M x 36	(2) 8M x 36
256MB	(2) 16M x 36	(2) 16M x 36

Note: Board accepts EDO memory. Banks are interchangeable.

Continued on next page. . .

ABIT COMPUTER CORPORATION
 AB - P D 5 N

. . . continued from previous page

CACHE CONFIGURATION

Note: 256KB/512KB cache is factory installed and is not configurable.

VIDEO MEMORY CONFIGURATION

Note: The size & location of the video memory is unidentified.

CPU SPEED SELECTION (CX 6X86/6X86L)

CPU speed	Clock speed	Multiplier	SW2/1	SW2/2	SW2/3
120MHz	50MHz	2x	On	Off	Off
133MHz	55MHz	2x	On	Off	Off
150MHz	60MHz	2x	On	Off	Off
166MHz	66MHz	2x	On	Off	Off
200MHz	75MHz	2x	On	Off	Off

CPU SPEED SELECTION (CX 6X86/6X86L, CON'T)

CPU speed	Clock speed	Multiplier	SW2/6	SW2/7	SW2/8
120MHz	50MHz	2x	On	On	Off
133MHz	55MHz	2x	Off	Off	Off
150MHz	60MHz	2x	On	Off	Off
166MHz	66MHz	2x	Off	On	Off
200MHz	75MHz	2x	On	Off	On

CPU SPEED SELECTION (CX 6X86MX)

CPU speed	Clock speed	Multiplier	SW2/1	SW2/2	SW2/3
166MHz	66MHz	2x	On	Off	Off
166MHz	60MHz	2.5x	On	On	Off
200MHz	66MHz	2.5x	On	On	Off
200MHz	75MHz	2x	On	Off	Off
233MHz	66MHz	3x	Off	On	Off
233MHz	75MHz	2.5x	On	On	Off
233MHz	83MHz	2x	On	Off	Off
266MHz	66MHz	3.5x	Off	Off	Off

CPU SPEED SELECTION (CX 6X86MX, CON'T)

CPU speed	Clock speed	Multiplier	SW2/6	SW2/7	SW2/8
166MHz	66MHz	2x	Off	On	Off
166MHz	60MHz	2.5x	On	Off	Off
200MHz	66MHz	2.5x	Off	On	Off
200MHz	75MHz	2x	On	Off	On
233MHz	66MHz	3x	Off	On	Off
233MHz	75MHz	2.5x	On	Off	On
233MHz	83MHz	2x	Off	On	On
266MHz	66MHz	3.5x	Off	On	Off

Continued on next page. . .

ABIT COMPUTER CORPORATION
 AB - P D 5 N

. . . continued from previous page

CPU SPEED SELECTION (IBM 6X86/6X86L)					
CPU speed	Clock speed	Multiplier	SW2/1	SW2/2	SW2/3
120MHz	50MHz	2x	On	On	Off
133MHz	55MHz	2x	Off	Off	Off
150MHz	60MHz	2x	On	Off	Off
166MHz	66MHz	2x	Off	On	Off
200MHz	75MHz	2x	On	Off	On

CPU SPEED SELECTION (IBM 6X86/6X86L, CON'T)					
CPU speed	Clock speed	Multiplier	SW2/6	SW2/7	SW2/8
120MHz	50MHz	2x	On	On	Off
133MHz	55MHz	2x	Off	Off	Off
150MHz	60MHz	2x	On	Off	Off
166MHz	66MHz	2x	Off	On	Off
200MHz	75MHz	2x	On	Off	On

CPU SPEED SELECTION (IBM 6X86MX)					
CPU speed	Clock speed	Multiplier	SW2/1	SW2/2	SW2/3
166MHz	66MHz	2x	On	Off	Off
166MHz	60MHz	2.5x	On	On	Off
200MHz	66MHz	2.5x	On	On	Off
200MHz	75MHz	2x	On	Off	Off
233MHz	66MHz	3x	Off	On	Off
233MHz	75MHz	2.5x	On	On	Off
233MHz	83MHz	2x	On	Off	Off
266MHz	66MHz	3.5x	Off	Off	Off

CPU SPEED SELECTION (IBM 6X86MX, CON'T)					
CPU speed	Clock speed	Multiplier	SW2/6	SW2/7	SW2/8
166MHz	66MHz	2x	Off	On	Off
166MHz	60MHz	2.5x	On	Off	Off
200MHz	66MHz	2.5x	Off	On	Off
200MHz	75MHz	2x	On	Off	On
233MHz	66MHz	3x	Off	On	Off
233MHz	75MHz	2.5x	On	Off	On
233MHz	83MHz	2x	Off	On	On
266MHz	66MHz	3.5x	Off	On	Off

Continued on next page. . .

ABIT COMPUTER CORPORATION
 AB - P D 5 N

. . . continued from previous page

CPU SPEED SELECTION (AM K5)					
CPU speed	Clock speed	Multiplier	SW2/1	SW2/2	SW2/3
75MHz	50MHz	1.5x	Off	Off	Off
90MHz	60MHz	1.5x	Off	Off	Off
100MHz	66MHz	1.5x	Off	Off	Off
120MHz	60MHz	1.5x	Off	Off	Off
133MHz	66MHz	1.5x	Off	Off	Off
150MHz	60MHz	2x	On	Off	Off
166MHz	66MHz	2.5x	On	On	Off

CPU SPEED SELECTION (AM K5, CON'T)					
CPU speed	Clock speed	Multiplier	SW2/6	SW2/7	SW2/8
75MHz	50MHz	1.5x	On	On	Off
90MHz	60MHz	1.5x	On	Off	Off
100MHz	66MHz	1.5x	Off	On	Off
120MHz	60MHz	1.5x	On	Off	Off
133MHz	66MHz	1.5x	Off	On	Off
150MHz	60MHz	2x	On	Off	Off
166MHz	66MHz	2.5x	Off	On	Off

CPU SPEED SELECTION (AM K6)					
CPU speed	Clock speed	Multiplier	SW2/1	SW2/2	SW2/3
166MHz	66MHz	2.5x	On	On	Off
200MHz	66MHz	3x	Off	On	Off
233MHz	66MHz	3.5x	Off	Off	Off

CPU SPEED SELECTION (AM K6, CONT')					
CPU speed	Clock speed	Multiplier	SW2/6	SW2/7	SW2/8
166MHz	66MHz	2.5x	Off	On	Off
200MHz	66MHz	3x	Off	On	Off
233MHz	66MHz	3.5x	Off	On	Off

CPU SPEED SELECTION (INTEL)					
CPU speed	Clock speed	Multiplier	SW2/1	SW2/2	SW2/3
75MHz	50MHz	1.5x	Off	Off	Off
90MHz	60MHz	1.5x	Off	Off	Off
100MHz	66MHz	1.5x	Off	Off	Off
120MHz	60MHz	2x	Off	Off	Off
133MHz	66MHz	2x	Off	Off	Off
150MHz	60MHz	2.5x	On	On	Off
166MHz	66MHz	2.5x	On	On	Off
200MHz	66MHz	3x	Off	On	Off
233MHz	66MHz	3.5x	Off	Off	Off

Continued on next page. . .

ABIT COMPUTER CORPORATION
 AB - P D 5 N

. . . continued from previous page

CPU SPEED SELECTION (INTEL, CON'T)					
CPU speed	Clock speed	Multiplier	SW2/6	SW2/7	SW2/8
75MHz	50MHz	1.5x	On	On	Off
90MHz	60MHz	1.5x	On	Off	Off
100MHz	66MHz	1.5x	Off	On	Off
120MHz	60MHz	2x	On	Off	Off
133MHz	66MHz	2x	Off	On	Off
150MHz	60MHz	2.5x	On	Off	Off
166MHz	66MHz	2.5x	Off	On	Off
200MHz	66MHz	3x	Off	On	Off
233MHz	66MHz	3.5x	Off	On	Off

CPU VOLTAGE SELECTION (SINGLE)								
Voltage	SW1/1	SW1/2	SW1/3	SW1/4	SW1/5	SW1/6	SW1/7	SW1/8
3.3v	On	On	Off	On	Off	Off	On	Off

CPU VOLTAGE SELECTION (DUAL)					
Voltage	V core	SW1/1	SW1/2	SW1/3	SW1/4
3.5v	3.3v	On	On	On	On
3.4v	3.3v	On	On	On	Off
3.2v	3.38v	On	On	Off	On
2.9v	3.38v	On	Off	Off	Off
2.8v	3.38v	On	Off	Off	On
2.7v	3.38v	Off	On	On	Off
2.6v	3.38v	Off	On	On	On

CPU VOLTAGE SELECTION (DUAL, CON'T)					
Voltage	V core	SW1/5	SW1/6	SW1/7	SW1/8
3.5v	3.3v	Off	Off	On	Off
3.4v	3.3v	Off	Off	On	Off
3.2v	3.38v	Off	Off	Off	On
2.9v	3.38v	Off	Off	Off	On
2.8v	3.38v	Off	Off	Off	On
2.7v	3.38v	Off	Off	Off	On
2.6v	3.38v	Off	Off	Off	On