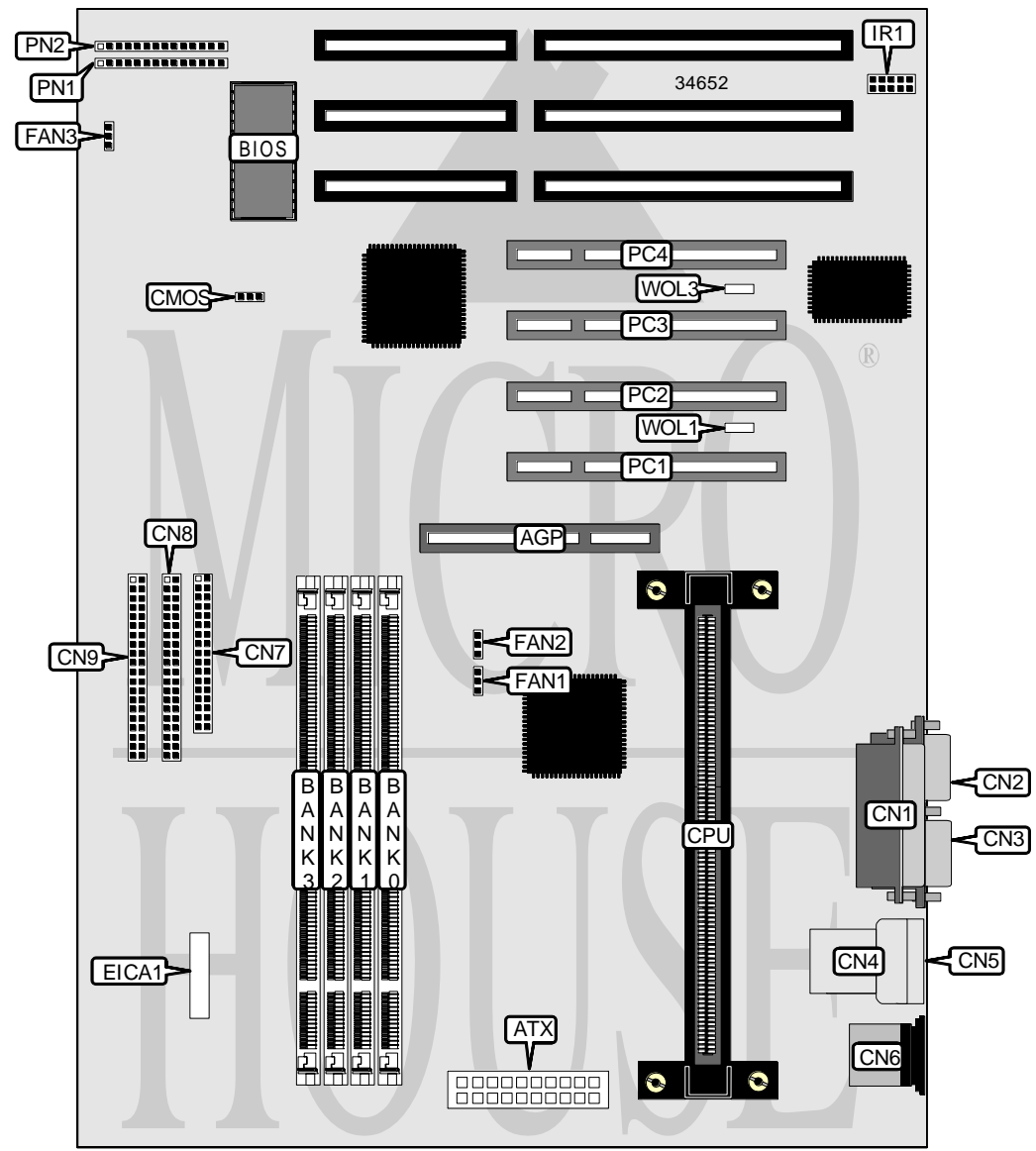


ABIT COMPUTER CORPORATION

L X 6

Processor	Pentium II
Processor Speed	233/266/300/333MHz
Chip Set	Intel
Video Chip Set	None
Maximum Onboard Memory	1GB (EDO supported)
Maximum Video Memory	None
Cache	256/512KB (located on Pentium II CPU)
BIOS	Award
Dimensions	304mm x 204mm
I/O Options	32-bit PCI slots (4), floppy drive interface, green PC connector, IDE interfaces (2), parallel port, PS/2 mouse port, serial ports (2), IR connector, USB connectors (2), ATX power connector, AGP slot
NPU Options	None



Continued on next page . . .

ABIT COMPUTER CORPORATION
LX 6

... continued from previous page

CONNECTIONS			
Purpose	Location	Purpose	Location
AGP slot	AGP	Chassis fan power	FAN2
ATX power connector	ATX	Chassis fan power	FAN3
Parallel port	CN1	IR connector	IR1
Serial port 2	CN2	32-bit PCI slots	PC1 – PC4
Serial port 1	CN3	Power LED & keylock	PN1/pins 1 - 5
USB connector	CN4	IDE interface LED	PN1/pins 7 & 8
USB connector	CN5	Soft off power supply	PN1/pins 10 & 11
PS/2 mouse port	CN6	Green PC connector	PN1/pins 13 & 14
Floppy drive interface	CN7	Reset switch	PN2/pins 1 & 2
IDE interface 2	CN8	Speaker	PN2/pins 4 - 7
IDE interface 1	CN9	Green PC LED	PN2/pins 9 & 10
Chassis fan power	FAN1		

USER CONFIGURABLE SETTINGS		
Function	Label	Position
í CMOS memory normal operation	CMOS	Pins 1 & 2 closed
CMOS memory clear	CMOS	Pins 2 & 3 closed
í Factory configured - do not alter	EICA1	Unidentified
í Factory configured - do not alter	WOL1	Unidentified
í Factory configured - do not alter	WOL3	Unidentified

DIMM CONFIGURATION				
Size	Bank 0	Bank 1	Bank 2	Bank 3
8MB	(1) 1M x 64	None	None	None
16MB	(1) 2M x 64	None	None	None
16MB	(1) 1M x 64	(1) 1M x 64	None	None
24MB	(1) 2M x 64	(1) 1M x 64	None	None
24MB	(1) 1M x 64	(1) 1M x 64	(1) 1M x 64	None
32MB	(1) 4M x 64	None	None	None
32MB	(1) 2M x 64	(1) 2M x 64	None	None
32MB	(1) 1M x 64	(1) 1M x 64	(1) 1M x 64	(1) 1M x 64
40MB	(1) 4M x 64	(1) 1M x 64	None	None
48MB	(1) 4M x 64	(1) 2M x 64	None	None
48MB	(1) 2M x 64	(1) 2M x 64	(1) 2M x 64	None
64MB	(1) 8M x 64	None	None	None
64MB	(1) 4M x 64	(1) 4M x 64	None	None
64MB	(1) 2M x 64	(1) 2M x 64	(1) 2M x 64	(1) 2M x 64
72MB	(1) 8M x 64	(1) 1M x 64	None	None
80MB	(1) 8M x 64	(1) 2M x 64	None	None
96MB	(1) 8M x 64	(1) 4M x 64	None	None
96MB	(1) 4M x 64	(1) 4M x 64	(1) 4M x 64	None
128MB	(1) 16M x 64	None	None	None

Continued on next page...

ABIT COMPUTER CORPORATION
L X 6

... continued from previous page

DIMM CONFIGURATION (CON'T)				
Size	Bank 0	Bank 1	Bank 2	Bank 3
128MB	(1) 8M x 64	(1) 8M x 64	None	None
128MB	(1) 4M x 64	(1) 4M x 64	(1) 4M x 64	(1) 4M x 64
136MB	(1) 16M x 64	(1) 1M x 64	None	None
144MB	(1) 16M x 64	(1) 2M x 64	None	None
160MB	(1) 16M x 64	(1) 4M x 64	None	None
192MB	(1) 16M x 64	(1) 8M x 64	None	None
192MB	(1) 8M x 64	(1) 8M x 64	(1) 8M x 64	None
256MB	(1) 16M x 64	(1) 16M x 64	None	None
256MB	(1) 8M x 64	(1) 8M x 64	(1) 8M x 64	(1) 8M x 64
256MB	(1) 32M x 64	None	None	None
384MB	(1) 16M x 64	(1) 16M x 64	(1) 16M x 64	None
512MB	(1) 16M x 64	(1) 16M x 64	(1) 16M x 64	(1) 16M x 64
512MB	(1) 32M x 64	(1) 32M x 64	None	None
768MB	(1) 32M x 64	(1) 32M x 64	(1) 32M x 64	None
1GB	(1) 32M x 64	(1) 32M x 64	(1) 32M x 64	(1) 32M x 64
Note: Board accepts EDO memory.				

CACHE CONFIGURATION
Note: 256KB/512KB cache is located on the Pentium II CPU.