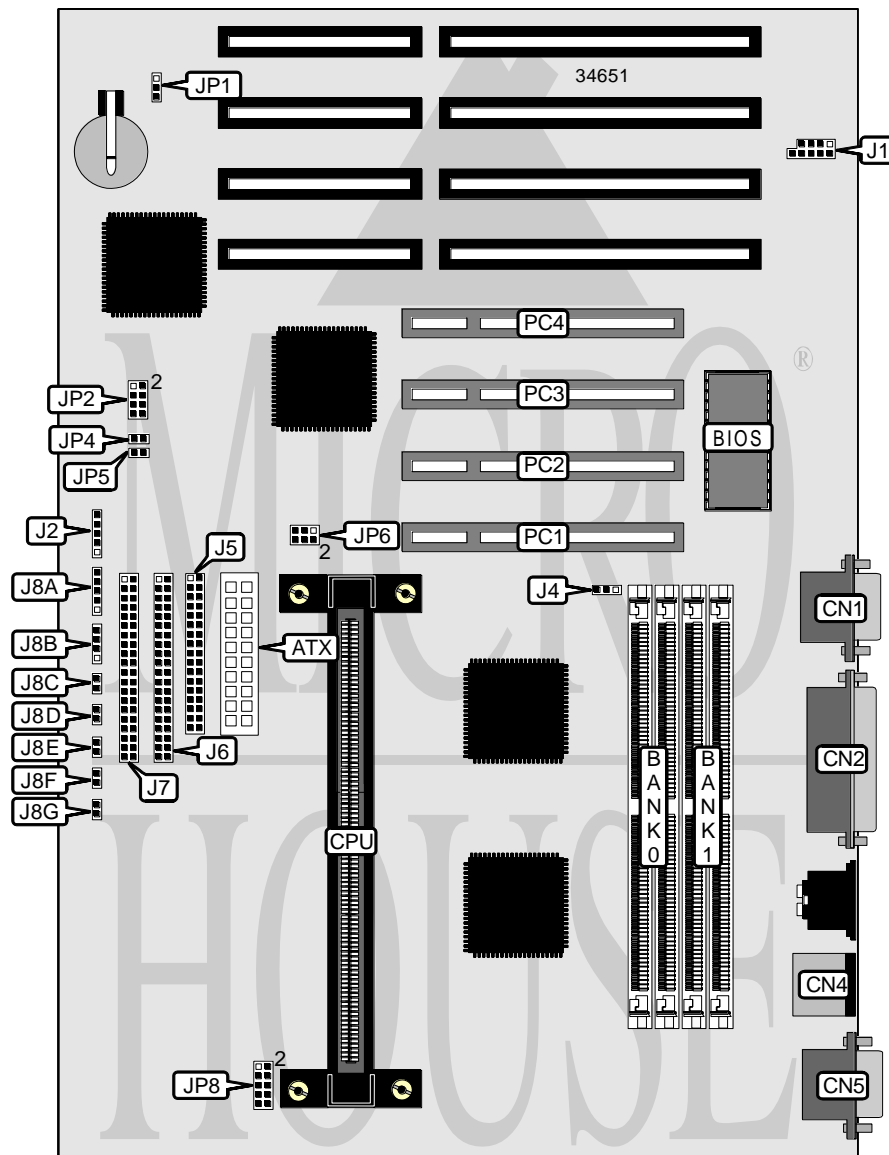


DIAMOND FLOWER, INC. 686IPK (REV. A+)

Processor	Pentium II
Processor Speed	233/266MHz
Chip Set	Intel
Video Chip Set	None
Maximum Onboard Memory	512MB (EDO supported)
Maximum Video Memory	None
Cache	256/512KB (located on Pentium II CPU)
BIOS	Award
Dimensions	305mm x 225mm
I/O Options	32-bit PCI slots (4), floppy drive interface, green PC connector, IDE interfaces (2), parallel port, PS/2 mouse port, serial ports (2), IR connector, USB connector, ATX power connector
NPU Options	None



Continued on next page. . .

DIAMOND FLOWER, INC.
6861PK (REV. A+)

... continued from previous page

CONNECTIONS			
Purpose	Location	Purpose	Location
ATX power connector	ATX	IDE interface 1	J7
Serial port 2	CN1	Power LED & keylock	J8A
Parallel port	CN2	Speaker	J8B
PS/2 mouse port	CN4	Reset switch	J8C
Serial port 1	CN5	Green PC connector	J8D
USB connector	J1	Soft off power supply	J8E
IR connector	J2	Green PC LED	J8F
Chassis fan power	J4	IDE interface LED	J8G
Floppy drive interface	J5	ATX LED	J8H
IDE interface 2	J6	32-bit PCI slots	PC1 – PC4

USER CONFIGURABLE SETTINGS		
Function	Label	Position
í CMOS memory normal operation	JP1	Pins 1 & 2 closed
CMOS memory clear	JP1	Pins 2 & 3 closed
í Factory configured - do not alter	JP4	Open
í CPU fan failure detection disabled	JP5	Open
CPU fan failure detection enabled	JP5	Closed
í Factory configured - do not alter	JP6	Pins 1 & 3, 2 & 4 closed

SIMM CONFIGURATION		
Size	Bank 0	Bank 1
8MB	(2) 1M x 36	None
16MB	(2) 2M x 36	None
16MB	(2) 1M x 36	(2) 1M x 36
24MB	(2) 2M x 36	(2) 1M x 36
32MB	(2) 4M x 36	None
32MB	(2) 2M x 36	(2) 2M x 36
40MB	(2) 4M x 36	(2) 1M x 36
48MB	(2) 4M x 36	(2) 2M x 36
64MB	(2) 8M x 36	None
64MB	(2) 4M x 36	(2) 4M x 36
72MB	(2) 8M x 36	(2) 1M x 36
80MB	(2) 8M x 36	(2) 2M x 36
96MB	(2) 8M x 36	(2) 4M x 36
128MB	(2) 8M x 36	(2) 8M x 36
128MB	(2) 16M x 36	None
136MB	(2) 16M x 36	(2) 1M x 36
144MB	(2) 16M x 36	(2) 2M x 36
160MB	(2) 16M x 36	(2) 4M x 36
192MB	(2) 16M x 36	(2) 8M x 36
256MB	(2) 16M x 36	(2) 16M x 36

Continued on next page...

DIAMOND FLOWER, INC.
686IPK (REV. A+)

... continued from previous page

SIMM CONFIGURATION (CON'T)		
Size	Bank 0	Bank 1
256MB	(2) 32M x 36	None
264MB	(2) 32M x 36	(2) 1M x 36
272MB	(2) 32M x 36	(2) 2M x 36
288MB	(2) 32M x 36	(2) 4M x 36
320MB	(2) 32M x 36	(2) 8M x 36
384MB	(2) 32M x 36	(2) 16M x 36
512MB	(2) 32M x 36	(2) 32M x 36

Note: Board accepts EDO memory. Board also accepts x 32 SIMMs.

CACHE CONFIGURATION
Note: 256KB/512KB cache is located on the Pentium II CPU.

CPU SPEED SELECTION			
CPU speed	Clock speed	Multiplier	JP2
233MHz	66MHz	3.5x	5 & 6, 7 & 8
266MHz	66MHz	4x	1 & 2, 3 & 4, 7 & 8
300MHz	66MHz	4.5x	3 & 4, 7 & 8
333MHz	66MHz	5x	1 & 2, 7 & 8

Note: Pins designated should be in the closed position.

CPU VOLTAGE SELECTION	
Voltage	JP8
VID support enabled	Open

Note: Additional settings unidentified.