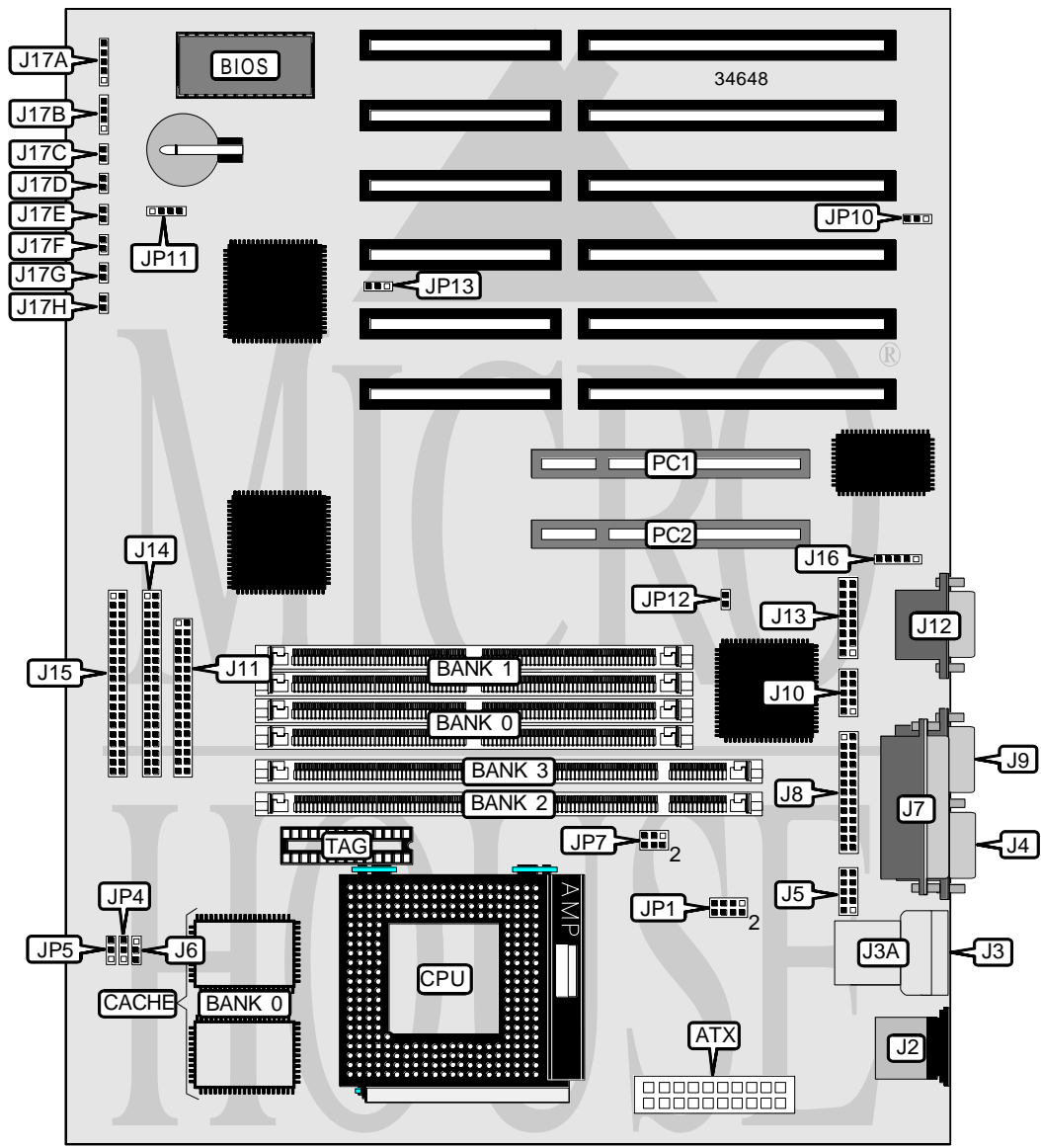


DIAMOND FLOWER, INC.

586ITOX (REV. B+)

Processor	CX 6X86L/CX 686MX/IBM 6X86L/IBM 686MX AM K5/AM K6/Pentium
Processor Speed	90/100/120/133/150/166/180/200/233MHz
Chip Set	Intel
Video Chip Set	S3
Maximum Onboard Memory	256MB (EDO supported)
Maximum Video Memory	Unidentified
Cache	512KB
BIOS	Award
Dimensions	305mm x 244mm
I/O Options	32-bit PCI slots (2), floppy drive interface, green PC connector, IDE interfaces (2), parallel port, PS/2 mouse port, serial ports (2), VGA port, IR connector, USB connectors (2), ATX power connector
NPU Options	None



Continued on next page. . .

DIAMOND FLOWER, INC.
5861TOX (REV. B+)

... continued from previous page

CONNECTIONS			
Purpose	Location	Purpose	Location
ATX power connector	ATX	IDE interface 2	J14
PS/2 mouse port	J2	IDE interface 1	J15
USB connector 2	J3	IR connector	J16
USB connector 1	J3A	Power LED & keylock	J17A
Serial port 2	J4	Speaker	J17B
Serial port 2	J5	Reset switch	J17C
CPU fan power	J6	Green PC connector	J17D
Parallel port	J7	Soft off power supply	J17E
Parallel port	J8	Green PC LED	J17F
Serial port 1	J9	IDE interface LED	J17G
Serial port 1	J10	ATX LED	J17H
Floppy drive interface	J11	Wake on modem connector	JP10
VGA port	J12	32-bit PCI slots	PC1 & PC2
VGA interface	J13		

USER CONFIGURABLE SETTINGS		
Function	Label	Position
í CMOS memory normal operation	JP11	Pins 1 & 2 closed
CMOS memory clear	JP11	Pins 3 & 4 closed
í On board video enabled	JP12	Closed
On board video disabled	JP12	Open
í Power type select ATX	JP13	Pins 1 & 2 closed
Power type select AC	JP13	Pins 2 & 3 closed

SIMM CONFIGURATION		
Size	Bank 0	Bank 1
8MB	(2) 1M x 36	None
16MB	(2) 2M x 36	None
16MB	(2) 1M x 36	(2) 1M x 36
24MB	(2) 2M x 36	(2) 1M x 36
32MB	(2) 4M x 36	None
32MB	(2) 2M x 36	(2) 2M x 36
40MB	(2) 4M x 36	(2) 1M x 36
48MB	(2) 4M x 36	(2) 2M x 36
64MB	(2) 8M x 36	None
64MB	(2) 4M x 36	(2) 4M x 36
72MB	(2) 8M x 36	(2) 1M x 36
80MB	(2) 8M x 36	(2) 2M x 36
96MB	(2) 8M x 36	(2) 4M x 36
128MB	(2) 8M x 36	(2) 8M x 36
128MB	(2) 16M x 36	None
136MB	(2) 16M x 36	(2) 1M x 36

Continued on next page...

DIAMOND FLOWER, INC.
586ITOX (REV. B+)

... continued from previous page

SIMM CONFIGURATION (CON'T)		
Size	Bank 0	Bank 1
144MB	(2) 16M x 36	(2) 2M x 36
160MB	(2) 16M x 36	(2) 4M x 36
192MB	(2) 16M x 36	(2) 8M x 36
256MB	(2) 16M x 36	(2) 16M x 36

Note: Board accepts EDO memory.

DIMM CONFIGURATION		
Size	Bank 2	Bank 3
8MB	(1) 1M x 64	None
16MB	(1) 2M x 64	None
16MB	(1) 1M x 64	(1) 1M x 64
24MB	(1) 2M x 64	(1) 1M x 64
32MB	(1) 4M x 64	None
32MB	(1) 2M x 64	(1) 2M x 64
40MB	(1) 4M x 64	(1) 1M x 64
48MB	(1) 4M x 64	(1) 2M x 64
64MB	(1) 8M x 64	None
64MB	(1) 4M x 64	(1) 4M x 64
72MB	(1) 8M x 64	(1) 1M x 64
80MB	(1) 8M x 64	(1) 2M x 64
96MB	(1) 8M x 64	(1) 4M x 64
128MB	(1) 16M x 64	None
128MB	(1) 8M x 64	(1) 8M x 64
136MB	(1) 16M x 64	(1) 1M x 64
144MB	(1) 16M x 64	(1) 2M x 64
160MB	(1) 16M x 64	(1) 4M x 64
192MB	(1) 16M x 64	(1) 8M x 64
256MB	(1) 16M x 64	(1) 16M x 64

CACHE CONFIGURATION		
Size	Bank 0	TAG
512KB	(2) 64K x 32	Unidentified

VIDEO MEMORY CONFIGURATION

Note: The location & size of the video memory is unidentified.

CPU SPEED SELECTION (CX 6X86L)					
CPU speed	Clock speed	Multiplier	JP4	JP5	JP7
150MHz	60MHz	2x	1 & 2	2 & 3	1 & 2
166MHz	66MHz	2x	2 & 3	1 & 2	1 & 2

Note: Pins designated should be in the closed position.

Continued on next page. . .

DIAMOND FLOWER, INC.
586ITOX (REV. B+)

... continued from previous page

CPU SPEED SELECTION (CX 6X86MX)					
CPU speed	Clock speed	Multiplier	JP4	JP5	JP7
166MHz	60MHz	2.5x	1 & 2	2 & 3	1 & 2, 3 & 4
166MHz	66MHz	2x	2 & 3	1 & 2	1 & 2
200MHz	66MHz	2.5x	2 & 3	1 & 2	1 & 2, 3 & 4

Note: Pins designated should be in the closed position.

CPU SPEED SELECTION (IBM 6X86L)					
CPU speed	Clock speed	Multiplier	JP4	JP5	JP7
150MHz	60MHz	2x	1 & 2	2 & 3	1 & 2
166MHz	66MHz	2x	2 & 3	1 & 2	1 & 2

Note: Pins designated should be in the closed position.

CPU SPEED SELECTION (IBM 6X86MX)					
CPU speed	Clock speed	Multiplier	JP4	JP5	JP7
166MHz	60MHz	2.5x	1 & 2	2 & 3	1 & 2, 3 & 4
166MHz	66MHz	2x	2 & 3	1 & 2	1 & 2
200MHz	66MHz	2.5x	2 & 3	1 & 2	1 & 2, 3 & 4

Note: Pins designated should be in the closed position.

CPU SPEED SELECTION (AM K5)					
CPU speed	Clock speed	Multiplier	JP4	JP5	JP7
90MHz	60MHz	1.5x	1 & 2	2 & 3	Open
100MHz	66MHz	1.5x	2 & 3	1 & 2	Open
120MHz	60MHz	1.5x	1 & 2	2 & 3	Open
133MHz	66MHz	1.5x	2 & 3	1 & 2	Open
166MHz	66MHz	1.75x	2 & 3	1 & 2	1 & 2, 3 & 4

Note: Pins designated should be in the closed position.

CPU SPEED SELECTION (AM K6)					
CPU speed	Clock speed	Multiplier	JP4	JP5	JP7
166MHz	66MHz	2.5x	2 & 3	1 & 2	1 & 2, 3 & 4
200MHz	66MHz	3x	2 & 3	1 & 2	3 & 4
233MHz	66MHz	3.5x	2 & 3	1 & 2	Open

Note: Pins designated should be in the closed position.

Continued on next page...

DIAMOND FLOWER, INC.
586ITOX (REV. B+)

... continued from previous page

CPU SPEED SELECTION (INTEL)					
CPU speed	Clock speed	Multiplier	JP4	JP5	JP7
90MHz	60MHz	1.5x	1 & 2	2 & 3	Open
100MHz	66MHz	1.5x	2 & 3	1 & 2	Open
120MHz	60MHz	2x	1 & 2	2 & 3	1 & 2
133MHz	66MHz	2x	2 & 3	1 & 2	1 & 2
150MHz	60MHz	2.5x	1 & 2	2 & 3	1 & 2, 3 & 4
166MHz	66MHz	2.5x	2 & 3	1 & 2	1 & 2, 3 & 4
200MHz	66MHz	3x	2 & 3	1 & 2	3 & 4

Note: Pins designated should be in the closed position.

CPU SPEED SELECTION (INTEL MMX)					
CPU speed	Clock speed	Multiplier	JP4	JP5	JP7
166MHz	66MHz	2.5x	2 & 3	1 & 2	1 & 2, 3 & 4
200MHz	66MHz	3x	2 & 3	1 & 2	3 & 4
233MHz	66MHz	3.5x	2 & 3	1 & 2	Open

Note: Pins designated should be in the closed position.

CPU VOLTAGE SELECTION	
Voltage	JP1
2.8v	Pins 1 & 2, 3 & 4, 5 & 6 closed
2.9v	Pins 3 & 4, 5 & 6 closed
3.2v	Pins 1 & 2, 3 & 4 closed
3.3v	Pins 3 & 4 closed
3.5v	Open