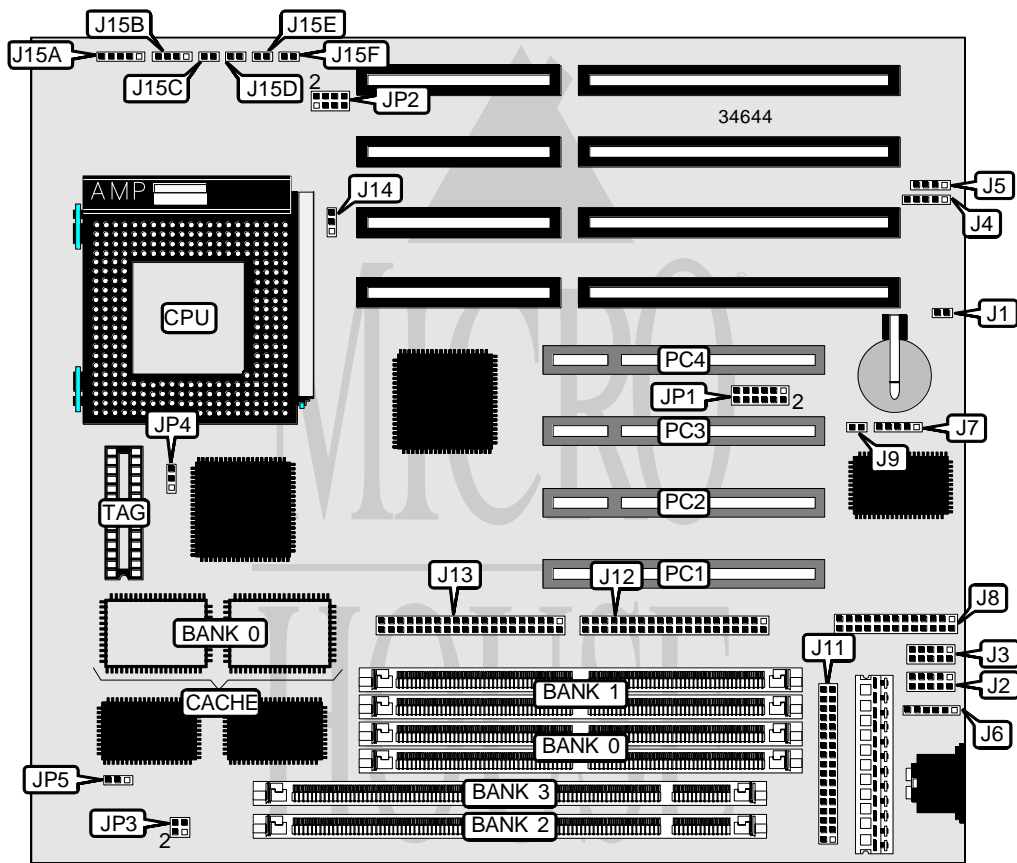


DIAMOND FLOWER, INC.

586IPVG (REV. AD+)

Processor	CX 6X86/CX 6X86L/CX 686MX/IBM 6X86/IBM 6X86L/IBM 686MX/ AM K5/AM K6/Pentium
Processor Speed	90/100/120/133/150/166/180/200/233/266MHz
Chip Set	Intel
Video Chip Set	None
Maximum Onboard Memory	128MB (EDO supported)
Maximum Video Memory	None
Cache	256/512KB
BIOS	Award
Dimensions	230mm x 220mm
I/O Options	32-bit PCI slots (4), floppy drive interface, green PC connector, IDE interfaces (2), parallel port, PS/2 mouse interface, serial ports (2), IR connector, USB connectors (2)
NPU Options	None



Continued on next page . . .

DIAMOND FLOWER, INC.
5861PVG (REV. AD+)

... continued from previous page

CONNECTIONS			
Purpose	Location	Purpose	Location
Serial port 1	J2	IDE interface 2	J13
Serial port 2	J3	Chassis fan power	J14
USB connector	J4	Power LED & keylock	J15A
USB connector	J5	Speaker	J15B
PS/2 mouse interface	J6	Reset switch	J15C
IR connector	J7	Green PC connector	J15D
Parallel port	J8	Green PC LED	J15E
Floppy drive interface	J11	IDE interface LED	J15F
IDE interface 1	J12	32-bit PCI slots	PC1 – PC4

USER CONFIGURABLE SETTINGS		
Function	Label	Position
í CMOS memory normal operation	J1	Closed
CMOS memory clear	J1	Open
í Password normal operation	J9	Closed
Password clear	J9	Open

SIMM CONFIGURATION		
Size	Bank 0	Bank 1
8MB	(2) 1M x 36	None
16MB	(2) 2M x 36	None
16MB	(2) 1M x 36	(2) 1M x 36
24MB	(2) 2M x 36	(2) 1M x 36
32MB	(2) 4M x 36	None
32MB	(2) 2M x 36	(2) 2M x 36
40MB	(2) 4M x 36	(2) 1M x 36
48MB	(2) 4M x 36	(2) 2M x 36
64MB	(2) 8M x 36	None
64MB	(2) 4M x 36	(2) 4M x 36
72MB	(2) 8M x 36	(2) 1M x 36
80MB	(2) 8M x 36	(2) 2M x 36
96MB	(2) 8M x 36	(2) 4M x 36
128MB	(2) 8M x 36	(2) 8M x 36

Note: Board accepts EDO memory. Do not install SIMMs & DIMMs at the same time.

Continued on next page. . .

DIAMOND FLOWER, INC.
586IPVG (REV. AD+)

... continued from previous page

DIMM CONFIGURATION		
Size	Bank 2	Bank 3
8MB	(1) 1M x 64	None
16MB	(1) 2M x 64	None
16MB	(1) 1M x 64	(1) 1M x 64
24MB	(1) 2M x 64	(1) 1M x 64
32MB	(1) 4M x 64	None
32MB	(1) 2M x 64	(1) 2M x 64
40MB	(1) 4M x 64	(1) 1M x 64
48MB	(1) 4M x 64	(1) 2M x 64
64MB	(1) 8M x 64	None
64MB	(1) 4M x 64	(1) 4M x 64
72MB	(1) 8M x 64	(1) 1M x 64
80MB	(1) 8M x 64	(1) 2M x 64
96MB	(1) 8M x 64	(1) 4M x 64
128MB	(1) 8M x 64	(1) 8M x 64

DIMM/SIMM JUMPER CONFIGURATION	
Type	JP5
i SIMMs installed	Pins 1 & 2 closed
DIMMs installed	Pins 2 & 3 closed

CACHE CONFIGURATION		
Size	Bank 0	TAG
256KB	(2) 32K x 32	Unidentified
512KB	(2) 64K x 32	Unidentified

CPU SPEED SELECTION (CX 6X86)			
CPU speed	Clock speed	Multiplier	JP1
120MHz	50MHz	2x	1 & 2, 3 & 4, 7 & 8
150MHz	60MHz	2x	1 & 2, 7 & 8
166MHz	66MHz	2x	3 & 4, 7 & 8

Note: Pins designated should be in the closed position.

CPU SPEED SELECTION (CX 6X86L)			
CPU speed	Clock speed	Multiplier	JP1
166MHz	66MHz	2x	3 & 4, 7 & 8

Note: Pins designated should be in the closed position.

Continued on next page...

DIAMOND FLOWER, INC.
5861PVG (REV. AD+)

... continued from previous page

CPU SPEED SELECTION (CX 6X86MX)			
CPU speed	Clock speed	Multiplier	JP1
166MHz	60MHz	2.5x	1 & 2, 7 & 8, 9 & 10
200MHz	66MHz	2.5x	3 & 4, 7 & 8, 9 & 10

Note: Pins designated should be in the closed position.

CPU SPEED SELECTION (IBM 6X86)			
CPU speed	Clock speed	Multiplier	JP1
120MHz	50MHz	2x	1 & 2, 3 & 4, 7 & 8
150MHz	60MHz	2x	1 & 2, 7 & 8
166MHz	66MHz	2x	3 & 4, 7 & 8

Note: Pins designated should be in the closed position.

CPU SPEED SELECTION (IBM 6X86L)			
CPU speed	Clock speed	Multiplier	JP1
166MHz	66MHz	2x	3 & 4, 7 & 8

Note: Pins designated should be in the closed position.

CPU SPEED SELECTION (IBM 6X86MX)			
CPU speed	Clock speed	Multiplier	JP1
166MHz	60MHz	2.5x	1 & 2, 7 & 8, 9 & 10
200MHz	66MHz	2.5x	3 & 4, 7 & 8, 9 & 10

Note: Pins designated should be in the closed position.

CPU SPEED SELECTION (AM K5)			
CPU speed	Clock speed	Multiplier	JP1
90MHz	60MHz	1.5x	1 & 2
100MHz	66MHz	1.5x	3 & 4
120MHz	60MHz	1.5x	1 & 2
133MHz	66MHz	1.5x	3 & 4
166MHz	66MHz	1.75x	3 & 4, 7 & 8, 9 & 10

Note: Pins designated should be in the closed position.

CPU SPEED SELECTION (AM K6)			
CPU speed	Clock speed	Multiplier	JP1
166MHz	66MHz	2.5x	3 & 4, 7 & 8, 9 & 10
200MHz	66MHz	3x	3 & 4, 9 & 10
233MHz	66MHz	3.5x	3 & 4
266MHz	66MHz	4x	3 & 4, 11 & 12

Note: Pins designated should be in the closed position.

Continued on next page. . .

DIAMOND FLOWER, INC.
586IPVG (REV. AD+)

... continued from previous page

CPU SPEED SELECTION (INTEL)			
CPU speed	Clock speed	Multiplier	JP1
90MHz	60MHz	1.5x	1 & 2
100MHz	66MHz	1.5x	3 & 4
120MHz	60MHz	2x	1 & 2, 7 & 8
133MHz	66MHz	2x	3 & 4, 7 & 8
150MHz	60MHz	2.5x	1 & 2, 7 & 8, 9 & 10
166MHz	66MHz	2.5x	3 & 4, 7 & 8, 9 & 10
200MHz	66MHz	3x	3 & 4, 9 & 10
233MHz	66MHz	3.5x	3 & 4

Note: Pins designated should be in the closed position.

CPU VOLTAGE SELECTION			
Voltage	JP2	JP3	JP4
2.8v	7 & 8	3 & 4	1 & 2
2.9v	1 & 2, 7 & 8	3 & 4	1 & 2
3.2v	5 & 6, 7 & 8	3 & 4	1 & 2
3.3v	1 & 2, 5 & 6, 7 & 8	3 & 4	2 & 3
3.3V (CX 6X86L)	1 & 2, 5 & 6, 7 & 8	1 & 2	1 & 2
3.5v	1 & 2, 3 & 4, 5 & 6, 7 & 8	3 & 4	2 & 3

Note: Pins designated should be in the closed position.