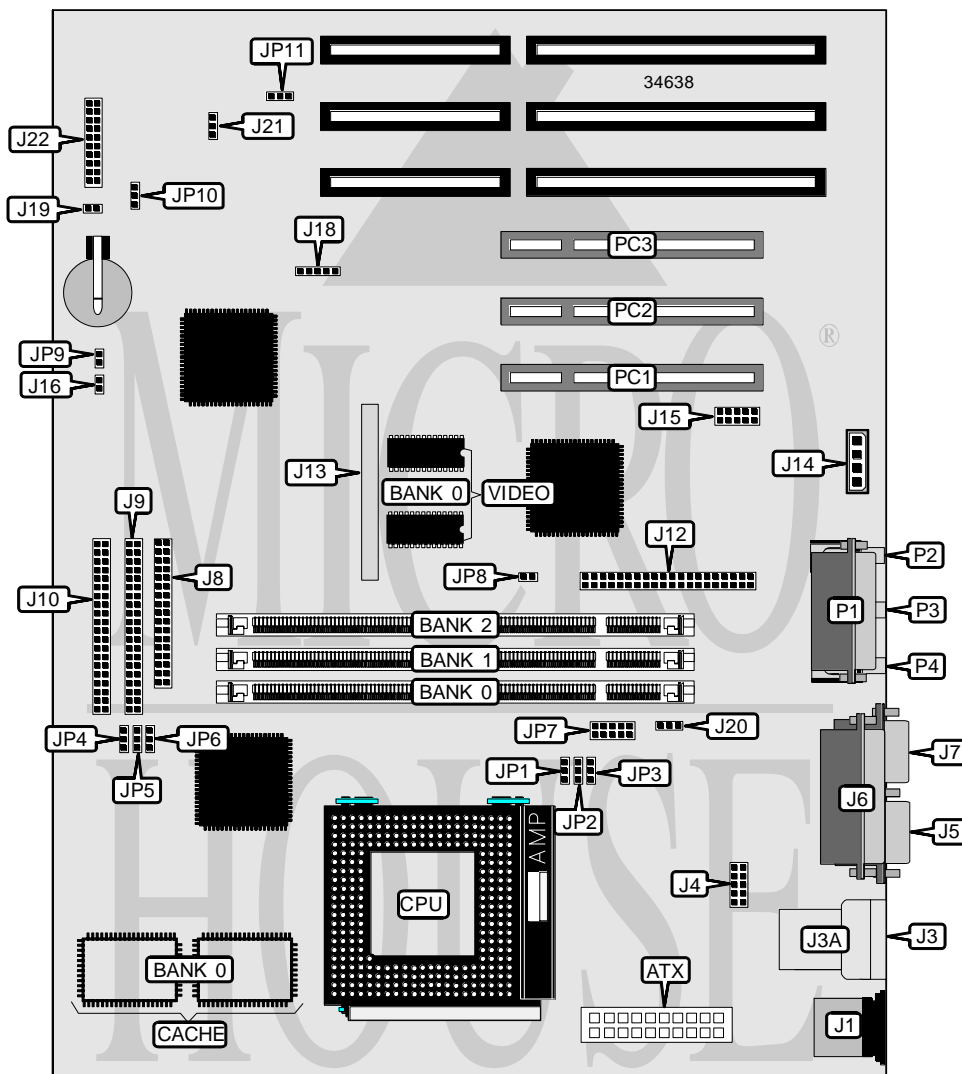


ELITEGROUP COMPUTER SYSTEMS, INC.

P 5 T X - A R

Processor	CX 6X86/CX 686MX/IBM 6X86/IBM 686MX/AM K5/AM K6/Pentium
Processor Speed	75/90/100/120/133/150/166/200/233MHz
Chip Set	Intel
Video Chip Set	ATI
Maximum Onboard Memory	256MB (EDO supported)
Maximum Video Memory	4MB
Cache	256/512KB
BIOS	Award
Dimensions	305mm x 244mm
I/O Options	32-bit PCI slots (3), floppy drive interface, game port, green PC connector, IDE interfaces (2), parallel port, PS/2 mouse port, serial ports (2), VGA feature connector, VGA port, IR connector, USB connectors (2), ATX power connector, microphone in, line in, line out, TV out connector, audio in – CD-ROM
NPU Options	None



Continued on next page . . .

ELITEGROUP COMPUTER SYSTEMS, INC.
P 5 T X - A R

... continued from previous page

CONNECTIONS			
Purpose	Location	Purpose	Location
ATX power connector	ATX	Soft off power supply	J19
PS/2 mouse port	J1	CPU fan power	J20
USB connector	J3	Intrusion connector	J21
USB connector	J3A	Power LED	J22/pins 2 & 3
Serial port 2	J4	Green PC connector	J22/pins 4 & 5
Serial port 1	J5	Turbo switch	J22/pins 6 & 7
Parallel port	J6	Reset switch	J22/pins 9 & 10
VGA port	J7	Keylock	J22/pins 11 - 15
Floppy drive interface	J8	Speaker	J22/pins 17 - 20
IDE interface 2	J9	Green PC LED	JP9
IDE interface 1	J10	Wake on modem connector	JP11
VGA feature connector	J12	Game port	P1
Audio in – CD-ROM	J14	Microphone in	P2
TV out connector	J15	Line in	P3
IDE interface LED	J16	Line out	P4
IR connector	J18	32-bit PCI slots	PC1 – PC3

USER CONFIGURABLE SETTINGS		
Function	Label	Position
í Factory configured - do not alter	JP1	Unidentified
í On board video enabled	JP8	Open
On board video disabled	JP8	Closed
í CMOS memory normal operation	JP10	Pins 2 & 3 closed
CMOS memory clear	JP10	Pins 1 & 2 closed

DIMM CONFIGURATION			
Size	Bank 0	Bank 1	Bank 2
8MB	(1) 1M x 64	None	None
16MB	(1) 2M x 64	None	None
16MB	(1) 1M x 64	(1) 1M x 64	None
24MB	(1) 2M x 64	(1) 1M x 64	None
24MB	(1) 1M x 64	(1) 1M x 64	(1) 1M x 64
32MB	(1) 4M x 64	None	None
32MB	(1) 2M x 64	(1) 2M x 64	None
40MB	(1) 4M x 64	(1) 1M x 64	None
48MB	(1) 4M x 64	(1) 2M x 64	None
48MB	(1) 2M x 64	(1) 2M x 64	(1) 2M x 64
64MB	(1) 8M x 64	None	None
64MB	(1) 4M x 64	(1) 4M x 64	None
72MB	(1) 8M x 64	(1) 1M x 64	None
80MB	(1) 8M x 64	(1) 2M x 64	None

Continued on next page. . .

ELITEGROUP COMPUTER SYSTEMS, INC.
P5TX-AR

... continued from previous page

DIMM CONFIGURATION (CON'T)			
Size	Bank 0	Bank 1	Bank 2
96MB	(1) 8M x 64	(1) 4M x 64	None
96MB	(1) 4M x 64	(1) 4M x 64	(1) 4M x 64
128MB	(1) 16M x 64	None	None
128MB	(1) 8M x 64	(1) 8M x 64	None
136MB	(1) 16M x 64	(1) 1M x 64	None
144MB	(1) 16M x 64	(1) 2M x 64	None
160MB	(1) 16M x 64	(1) 4M x 64	None
192MB	(1) 16M x 64	(1) 8M x 64	None
256MB	(1) 16M x 64	(1) 16M x 64	None

Note: Board accepts EDO memory. Bank 2 will not accept any module larger than 32MB.

CACHE CONFIGURATION	
Size	Bank 0
256KB	(2) 32K x 32
512KB	(2) 64K x 32

VIDEO MEMORY CONFIGURATION		
Size	Bank 0	J13
2MB	2MB	Not Installed
4MB	2MB	2MB module installed

CPU SPEED SELECTION (CX 6X86)							
CPU speed	Clock speed	Multiplier	JP2	JP3	JP4	JP5	JP6
120MHz	50MHz	2x	1 & 2	2 & 3	N/A	N/A	N/A
133MHz	55MHz	2x	1 & 2	2 & 3	2 & 3	1 & 2	2 & 3
150MHz	60MHz	2x	1 & 2	2 & 3	1 & 2	1 & 2	2 & 3
166MHz	66MHz	2x	1 & 2	2 & 3	1 & 2	1 & 2	1 & 2
200MHz	75MHz	2x	1 & 2	2 & 3	2 & 3	1 & 2	1 & 2

Note: Pins designated should be in the closed position.

CPU SPEED SELECTION (CX 6X86MX)							
CPU speed	Clock speed	Multiplier	JP2	JP3	JP4	JP5	JP6
150MHz	75MHz	2x	1 & 2	2 & 3	2 & 3	1 & 2	1 & 2

Note: Pins designated should be in the closed position.

Continued on next page...

ELITEGROUP COMPUTER SYSTEMS, INC.
P5TX-AR

... continued from previous page

CPU SPEED SELECTION (IBM 6X86)							
CPU speed	Clock speed	Multiplier	JP2	JP3	JP4	JP5	JP6
120MHz	50MHz	2x	1 & 2	2 & 3	N/A	N/A	N/A
133MHz	55MHz	2x	1 & 2	2 & 3	2 & 3	1 & 2	2 & 3
150MHz	60MHz	2x	1 & 2	2 & 3	1 & 2	1 & 2	2 & 3
166MHz	66MHz	2x	1 & 2	2 & 3	1 & 2	1 & 2	1 & 2
200MHz	75MHz	2x	1 & 2	2 & 3	2 & 3	1 & 2	1 & 2

Note: Pins designated should be in the closed position.

CPU SPEED SELECTION (IBM 6X86MX)							
CPU speed	Clock speed	Multiplier	JP2	JP3	JP4	JP5	JP6
150MHz	75MHz	2x	1 & 2	2 & 3	2 & 3	1 & 2	1 & 2

Note: Pins designated should be in the closed position.

CPU SPEED SELECTION (AM K5)							
CPU speed	Clock speed	Multiplier	JP2	JP3	JP4	JP5	JP6
75MHz	50MHz	1.5x	1 & 2	1 & 2	N/A	N/A	N/A
90MHz	60MHz	1.5x	1 & 2	1 & 2	1 & 2	1 & 2	2 & 3
100MHz	66MHz	1.5x	1 & 2	1 & 2	1 & 2	1 & 2	1 & 2
120MHz	60MHz	1.5x	1 & 2	1 & 2	1 & 2	1 & 2	2 & 3
133MHz	66MHz	1.5x	1 & 2	1 & 2	1 & 2	1 & 2	1 & 2
150MHz	60MHz	2x	1 & 2	2 & 3	1 & 2	1 & 2	2 & 3
166MHz	66MHz	2x	1 & 2	2 & 3	1 & 2	1 & 2	1 & 2

Note: Pins designated should be in the closed position.

CPU SPEED SELECTION (AM K6)							
CPU speed	Clock speed	Multiplier	JP2	JP3	JP4	JP5	JP6
200MHz	66MHz	3x	2 & 3	1 & 2	1 & 2	1 & 2	1 & 2
233MHz	66MHz	3.5x	1 & 2	1 & 2	1 & 2	1 & 2	1 & 2

Note: Pins designated should be in the closed position.

CPU SPEED SELECTION (INTEL)							
CPU speed	Clock speed	Multiplier	JP2	JP3	JP4	JP5	JP6
75MHz	50MHz	1.5x	1 & 2	1 & 2	N/A	N/A	N/A
90MHz	60MHz	1.5x	1 & 2	1 & 2	1 & 2	1 & 2	2 & 3
100MHz	66MHz	1.5x	1 & 2	1 & 2	1 & 2	1 & 2	1 & 2
120MHz	60MHz	2x	1 & 2	2 & 3	1 & 2	1 & 2	2 & 3
133MHz	66MHz	2x	1 & 2	2 & 3	1 & 2	1 & 2	1 & 2
150MHz	60MHz	2.5x	2 & 3	2 & 3	1 & 2	1 & 2	2 & 3
166MHz	66MHz	2.5x	2 & 3	2 & 3	1 & 2	1 & 2	1 & 2
200MHz	66MHz	3x	2 & 3	1 & 2	1 & 2	1 & 2	1 & 2
233MHz	66MHz	3.5x	1 & 2	1 & 2	1 & 2	1 & 2	1 & 2

Note: Pins designated should be in the closed position.

Continued on next page. . .

ELITEGROUP COMPUTER SYSTEMS, INC.
P5TX-AR

... continued from previous page

CPU VOLTAGE SELECTION	
Voltage	JP7
2.5v	Pins 9 & 10 closed
2.8v	Pins 7 & 8 closed
2.9v	Pins 5 & 6 closed
3.2v	Pins 3 & 4 closed
3.3v	Pins 1 & 2 closed