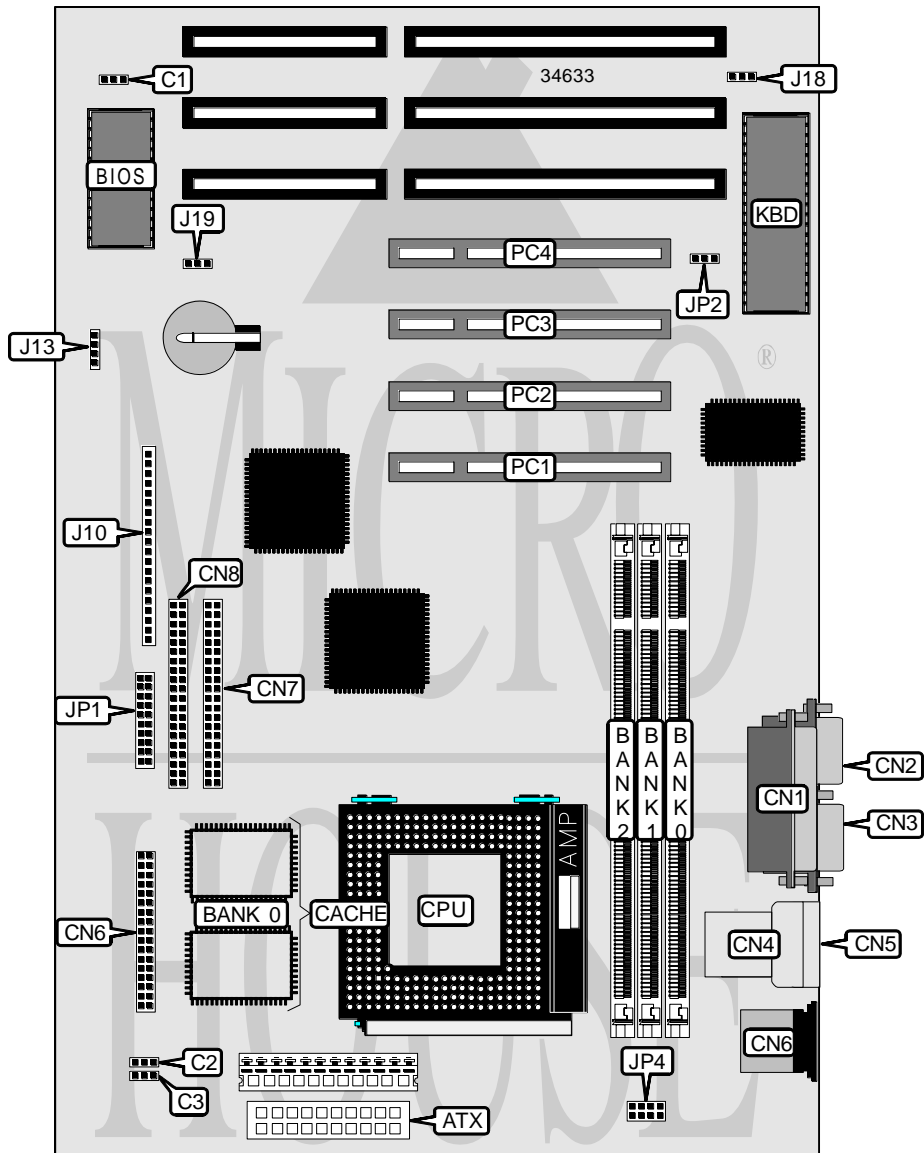


# ELITEGROUP COMPUTER SYSTEMS, INC.

## P5TX-APRO

<b>Processor</b>	CX 6X86/CX 686MX/IBM 6X86/IBM 6X86MX/AM K5/AM K6/Pentium
<b>Processor Speed</b>	75/90/100/120/133/150/166/200/233MHz
<b>Chip Set</b>	Intel
<b>Video Chip Set</b>	None
<b>Maximum Onboard Memory</b>	256MB
<b>Maximum Video Memory</b>	None
<b>Cache</b>	256/512KB
<b>BIOS</b>	Award
<b>Dimensions</b>	305mm x 244mm
<b>I/O Options</b>	32-bit PCI slots (4), floppy drive interface, green PC connector, IDE interfaces (2), parallel port, PS/2 mouse port, serial ports (2), IR connector, USB connectors (2), ATX power connector
<b>NPU Options</b>	None



Continued on next page . . .

ELITEGROUP COMPUTER SYSTEMS, INC.  
P5TX-APRO

... continued from previous page

CONNECTIONS			
Purpose	Location	Purpose	Location
ATX power connector	ATX	Power LED	J10/pins 1 - 3
Chassis fan power	C1	Green PC connector	J10/pins 4 & 5
Chassis fan power	C2	Green PC LED	J10/pins 6 - 8
Chassis fan power	C3	Reset switch	J10/pins 9 & 10
Parallel port	CN1	Keylock	J10/pins 11 & 12
Serial port 2	CN2	Speaker	J10/pins 13 - 16
Serial port 1	CN3	IDE interface LED	J10/pins 17 & 18
USB connector	CN4	Soft off power supply	J10/pins 19 & 20
USB connector	CN5	IR connector	J13
PS/2 mouse port	CN6	Intrusion alarm	J18
IDE interface 2	CN7	Wake up connector	J19
IDE interface 1	CN8	32-bit PCI slots	PC1 – PC4
Floppy drive interface	CN9		

USER CONFIGURABLE SETTINGS		
Function	Label	Position
í CMOS memory normal operation	JP2	Pins 2 & 3 closed
CMOS memory clear	JP2	Pins 1 & 2 closed

DIMM CONFIGURATION			
Size	Bank 0	Bank 1	Bank 2
8MB	(1) 1M x 64	None	None
16MB	(1) 2M x 64	None	None
16MB	(1) 1M x 64	(1) 1M x 64	None
24MB	(1) 2M x 64	(1) 1M x 64	None
24MB	(1) 1M x 64	(1) 1M x 64	(1) 1M x 64
32MB	(1) 4M x 64	None	None
32MB	(1) 2M x 64	(1) 2M x 64	None
40MB	(1) 4M x 64	(1) 1M x 64	None
48MB	(1) 4M x 64	(1) 2M x 64	None
48MB	(1) 2M x 64	(1) 2M x 64	(1) 2M x 64
64MB	(1) 8M x 64	None	None
64MB	(1) 4M x 64	(1) 4M x 64	None
72MB	(1) 8M x 64	(1) 1M x 64	None
80MB	(1) 8M x 64	(1) 2M x 64	None
96MB	(1) 8M x 64	(1) 4M x 64	None
96MB	(1) 4M x 64	(1) 4M x 64	(1) 4M x 64
128MB	(1) 16M x 64	None	None
128MB	(1) 8M x 64	(1) 8M x 64	None
136MB	(1) 16M x 64	(1) 1M x 64	None

Continued on next page. . .

ELITEGROUP COMPUTER SYSTEMS, INC.  
P5TX-APRO

... continued from previous page

DIMM CONFIGURATION (CON'T)			
Size	Bank 0	Bank 1	Bank 2
144MB	(1) 16M x 64	(1) 2M x 64	None
160MB	(1) 16M x 64	(1) 4M x 64	None
192MB	(1) 16M x 64	(1) 8M x 64	None
192MB	(1) 8M x 64	(1) 8M x 64	(1) 8M x 64
256MB	(1) 16M x 64	(1) 16M x 64	None

Note: Board accepts EDO memory.

CACHE CONFIGURATION	
Size	Bank 0
256KB	(2) 32K x 32
512KB	(2) 64K x 32

CPU SPEED SELECTION (CX 6X86)			
CPU speed	Clock speed	Multiplier	JP1
120MHz	50MHz	2x	1 & 3, 4 & 6, 11 & 13, 19 & 20, 21 & 22
133MHz	55MHz	2x	1 & 3, 4 & 6, 11 & 13, 17 & 19, 20 & 22
150MHz	60MHz	2x	1 & 3, 4 & 6, 11 & 13, 17 & 19, 18 & 20
166MHz	66MHz	2x	1 & 3, 4 & 6, , 9 & 11, 17 & 19, 18 & 20
200MHz	75MHz	2x	1 & 3, 4 & 6, 9 & 11, 17 & 19, 20 & 22

Note: Pins designated should be in the closed position.

CPU SPEED SELECTION (CX 6X86MX)			
CPU speed	Clock speed	Multiplier	JP1
150MHz	75MHz	2x	1 & 3, 4 & 6, 9 & 11, 17 & 19, 20 & 22

Note: Pins designated should be in the closed position.

CPU SPEED SELECTION (IBM 6X86)			
CPU speed	Clock speed	Multiplier	JP1
120MHz	50MHz	2x	1 & 3, 4 & 6, 11 & 13, 19 & 20, 21 & 22
133MHz	55MHz	2x	1 & 3, 4 & 6, 11 & 13, 17 & 19, 20 & 22
150MHz	60MHz	2x	1 & 3, 4 & 6, 11 & 13, 17 & 19, 18 & 20
166MHz	66MHz	2x	1 & 3, 4 & 6, 9 & 11, 17 & 19, 18 & 20
200MHz	75MHz	2x	1 & 3, 4 & 6, 9 & 11, 17 & 19, 20 & 22

Note: Pins designated should be in the closed position.

CPU SPEED SELECTION (IBM 6X86MX)			
CPU speed	Clock speed	Multiplier	JP1
150MHz	75MHz	2x	1 & 3, 4 & 6, 9 & 11, 17 & 19, 20 & 22

Note: Pins designated should be in the closed position.

Continued on next page. . .

ELITEGROUP COMPUTER SYSTEMS, INC.  
P5TX-APRO

... continued from previous page

CPU SPEED SELECTION (AM K5)			
CPU speed	Clock speed	Multiplier	JP1
75MHz	50MHz	1.5x	1 & 3, 2 & 4, 11 & 13, 19 & 20, 21 & 22
90MHz	60MHz	1.5x	1 & 3, 2 & 4, 11 & 13, 17 & 19, 18 & 20
100MHz	66MHz	1.5x	1 & 3, 2 & 4, 9 & 11, 17 & 19, 18 & 20
120MHz	60MHz	1.5x	1 & 3, 2 & 4, 11 & 13, 17 & 19, 18 & 20
133MHz	66MHz	1.5x	1 & 3, 2 & 4, 9 & 11, 17 & 19, 18 & 20
150MHz	60MHz	2x	1 & 3, 4 & 6, 11 & 13, 17 & 19, 18 & 20
166MHz	66MHz	2x	1 & 3, 4 & 6, 9 & 11, 17 & 19, 18 & 20

Note: Pins designated should be in the closed position.

CPU SPEED SELECTION (AM K6)			
CPU speed	Clock speed	Multiplier	JP1
200MHz	66MHz	3x	2 & 4, 3 & 5, 9 & 11, 17 & 19, 18 & 20
233MHz	66MHz	3.5x	1 & 3, 2 & 4, 9 & 11, 17 & 19, 18 & 20

Note: Pins designated should be in the closed position.

CPU SPEED SELECTION (INTEL)			
CPU speed	Clock speed	Multiplier	JP1
75MHz	50MHz	1.5x	1 & 3, 2 & 4, 11 & 13, 19 & 21, 20 & 22
90MHz	60MHz	1.5x	1 & 3, 2 & 4, 11 & 13, 17 & 19, 18 & 20
100MHz	66MHz	1.5x	1 & 3, 2 & 4, 9 & 11, 17 & 19, 18 & 20
120MHz	60MHz	2x	1 & 3, 4 & 6, 11 & 13, 17 & 19, 18 & 20
133MHz	66MHz	2x	1 & 3, 2 & 4, 9 & 11, 17 & 19, 18 & 20
150MHz	60MHz	2.5x	3 & 5, 4 & 6, 11 & 13, 17 & 19, 18 & 20
166MHz	66MHz	2.5x	3 & 5, 4 & 6, 9 & 11, 17 & 19, 18 & 20
200MHz	66MHz	3x	2 & 4, 3 & 5, 9 & 11, 17 & 19, 18 & 20
233MHz	66MHz	3.5x	1 & 3, 2 & 4, 9 & 11, 17 & 19, 18 & 20

Note: Pins designated should be in the closed position.

CPU VOLTAGE SELECTION	
Voltage	JP4
2.54v	Pins 1 & 2 closed
2.84v	Pins 3 & 4 closed
2.94v	Pins 5 & 6 closed
3.24v	Pins 7 & 8 closed
3.34v	Pins 9 & 10 closed