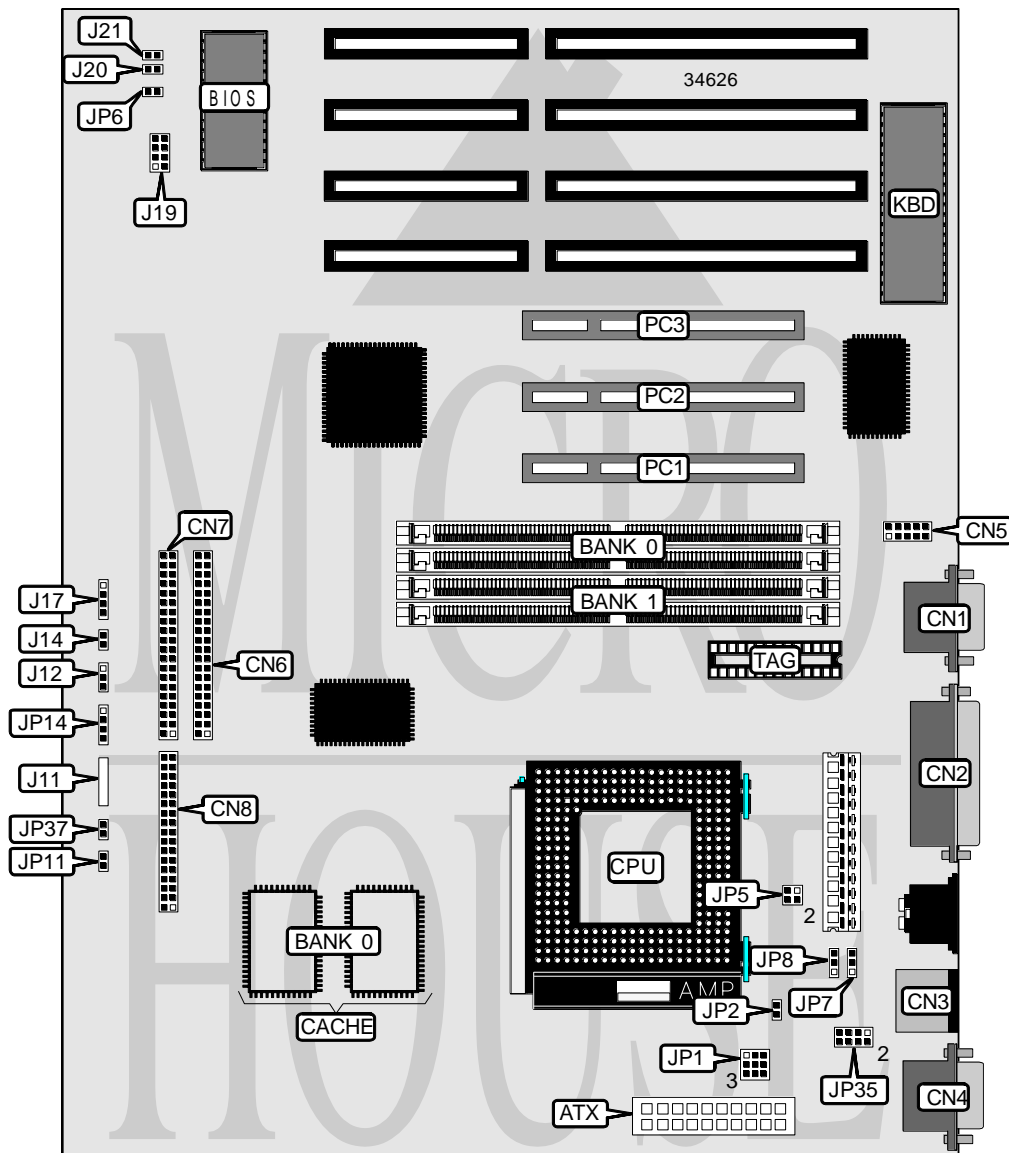


# GIGA-BYTE TECHNOLOGY CO., LTD.

## GA - 5 8 6 M S

<b>Processor</b>	CX M1/AM K5/Pentium
<b>Processor Speed</b>	75/90/100/120/125/133/150/166/180/200MHz
<b>Chip Set</b>	SIS
<b>Video Chip Set</b>	Unidentified
<b>Maximum Onboard Memory</b>	512MB (EDO supported)
<b>Maximum Video Memory</b>	Unidentified
<b>Cache</b>	256/512KB
<b>BIOS</b>	Award
<b>Dimensions</b>	305mm x 244mm
<b>I/O Options</b>	32-bit PCI slots (3), floppy drive interface, green PC connector, IDE interfaces (2), parallel port, PS/2 mouse port, serial ports (2), VGA port, IR connector, ATX power connector
<b>NPU Options</b>	None



Continued on next page . . .

... continued from previous page

CONNECTIONS			
Purpose	Location	Purpose	Location
ATX power connector	ATX	Reset switch	J14
VGA port	CN1	Speaker	J17
Parallel port	CN2	Chassis fan power	JP2
PS/2 mouse port	CN3	Turbo switch	J20
Serial port 1	CN4	Turbo LED	J21
Serial port 2	CN5	Keylock	J26
IDE interface 1	CN6	Green PC LED	JP6
IDE interface 2	CN7	Soft off power supply	JP11
Floppy drive interface	CN8	IDE interface LED	JP14
IR connector	J11	Green PC connector	JP37
Power LED	J12	32-bit PCI slots	PC1 – PC3

Note: The location of J26 is unidentified.

USER CONFIGURABLE SETTINGS		
Function	Label	Position
? Factory configured - do not alter	JP19	Unidentified

DRAM CONFIGURATION		
Size	Bank 0	Bank 1
8MB	(2) 1M x 36	None
16MB	(2) 2M x 36	None
16MB	(2) 1M x 36	(2) 1M x 36
24MB	(2) 2M x 36	(2) 1M x 36
32MB	(2) 4M x 36	None
32MB	(2) 2M x 36	(2) 2M x 36
40MB	(2) 4M x 36	(2) 1M x 36
48MB	(2) 4M x 36	(2) 2M x 36
64MB	(2) 8M x 36	None
64MB	(2) 4M x 36	(2) 4M x 36
72MB	(2) 8M x 36	(2) 1M x 36
80MB	(2) 8M x 36	(2) 2M x 36
96MB	(2) 8M x 36	(2) 4M x 36
128MB	(2) 8M x 36	(2) 8M x 36
128MB	(2) 16M x 36	None
136MB	(2) 16M x 36	(2) 1M x 36
144MB	(2) 16M x 36	(2) 2M x 36
160MB	(2) 16M x 36	(2) 4M x 36
192MB	(2) 16M x 36	(2) 8M x 36
256MB	(2) 16M x 36	(2) 16M x 36
256MB	(2) 32M x 36	None
264MB	(2) 32M x 36	(2) 1M x 36
272MB	(2) 32M x 36	(2) 2M x 36

Continued on next page...

GIGA-BYTE TECHNOLOGY CO., LTD.  
GA - 586MS

... continued from previous page

DRAM CONFIGURATION (CON'T)		
Size	Bank 0	Bank 1
288MB	(2) 32M x 36	(2) 4M x 36
320MB	(2) 32M x 36	(2) 8M x 36
384MB	(2) 32M x 36	(2) 16M x 36
512MB	(2) 32M x 36	(2) 32M x 36

Note: Board accepts EDO memory.

CACHE CONFIGURATION	
Size	Bank 0
256KB	(2) 32K x 32
512KB	(2) 64K x 32

Note: The size of the TAG is unidentified.

VIDEO MEMORY CONFIGURATION
Note: The size and location of the video memory is unidentified.

CPU SPEED SELECTION (CYRIX)				
CPU speed	Clock speed	Multiplier	JP1	JP5
120MHz	50MHz	2x	4 & 7, 5 & 8, 6 & 9	3 & 4
133MHz	55MHz	2x	4 & 7, 5 & 8, 6 & 9	3 & 4
150MHz	60MHz	2x	4 & 7, 5 & 8, 6 & 9	3 & 4

Note: Pins designated should be in the closed position.

CPU SPEED SELECTION (CYRIX, CON'T)					
CPU speed	Clock speed	Multiplier	JP7	JP8	JP35
120MHz	50MHz	2x	1 & 2	1 & 2	1 & 2
133MHz	55MHz	2x	2 & 3	2 & 3	1 & 2
150MHz	60MHz	2x	2 & 3	1 & 2	1 & 2

Note: Pins designated should be in the closed position.

CPU SPEED SELECTION (AMD)				
CPU speed	Clock speed	Multiplier	JP1	JP5
75MHz	50MHz	1.5x	4 & 7, 5 & 8, 6 & 9	Open
90MHz	60MHz	1.5x	4 & 7, 5 & 8, 6 & 9	Open
100MHz	66MHz	1.5x	4 & 7, 5 & 8, 6 & 9	Open

Note: Pins designated should be in the closed position.

Continued on next page. . .

GIGA-BYTE TECHNOLOGY CO., LTD.  
G A - 5 8 6 M S

... continued from previous page

CPU SPEED SELECTION (AMD, CON'T)					
CPU speed	Clock speed	Multiplier	JP7	JP8	JP35
75MHz	50MHz	1.5x	1 & 2	1 & 2	1 & 2
90MHz	60MHz	1.5x	2 & 3	1 & 2	1 & 2
100MHz	66MHz	1.5x	1 & 2	2 & 3	1 & 2

Note: Pins designated should be in the closed position.

CPU SPEED SELECTION (INTEL)				
CPU speed	Clock speed	Multiplier	JP1	JP5
75MHz	50MHz	1.5x	4 & 7, 5 & 8, 6 & 9	Open
90MHz	60MHz	1.5x	4 & 7, 5 & 8, 6 & 9	Open
100MHz	66MHz	1.5x	4 & 7, 5 & 8, 6 & 9	Open
120MHz	60MHz	2x	4 & 7, 5 & 8, 6 & 9	3 & 4
125MHz	50MHz	2.5x	4 & 7, 5 & 8, 6 & 9	1 & 2, 3 & 4
133MHz	66MHz	2x	4 & 7, 5 & 8, 6 & 9	3 & 4
150MHz	60MHz	2.5x	4 & 7, 5 & 8, 6 & 9	1 & 2, 3 & 4
150MHz (P55C)	60MHz	2.5x	1 & 4, 2 & 5, 3 & 6	1 & 2, 3 & 4
166MHz	66MHz	2.5x	4 & 7, 5 & 8, 6 & 9	1 & 2, 3 & 4
166MHz (P55C)	66MHz	2.5x	1 & 4, 2 & 5, 3 & 6	1 & 2, 3 & 4
180MHz	60MHz	3x	4 & 7, 5 & 8, 6 & 9	1 & 2
200MHz	66MHz	3x	4 & 7, 5 & 8, 6 & 9	1 & 2
200MHz (P55C)	66MHz	3x	1 & 4, 2 & 5, 3 & 6	1 & 2

Note: Pins designated should be in the closed position.

CPU SPEED SELECTION (INTEL, CON'T)					
CPU speed	Clock speed	Multiplier	JP7	JP8	JP35
75MHz	50MHz	1.5x	1 & 2	1 & 2	1 & 2
90MHz	60MHz	1.5x	2 & 3	1 & 2	1 & 2
100MHz	66MHz	1.5x	1 & 2	2 & 3	1 & 2
120MHz	60MHz	2x	2 & 3	1 & 2	1 & 2
125MHz	50MHz	2.5x	1 & 2	1 & 2	1 & 2
133MHz	66MHz	2x	1 & 2	2 & 3	1 & 2
150MHz	60MHz	2.5x	2 & 3	1 & 2	1 & 2
150MHz (P55C)	60MHz	2.5x	2 & 3	1 & 2	1 & 2
166MHz	66MHz	2.5x	1 & 2	2 & 3	1 & 2
166MHz (P55C)	66MHz	2.5x	1 & 2	2 & 3	1 & 2
180MHz	60MHz	3x	2 & 3	1 & 2	1 & 2
200MHz	66MHz	3x	1 & 2	2 & 3	1 & 2
200MHz (P55C)	66MHz	3x	1 & 2	2 & 3	1 & 2

Note: Pins designated should be in the closed position.