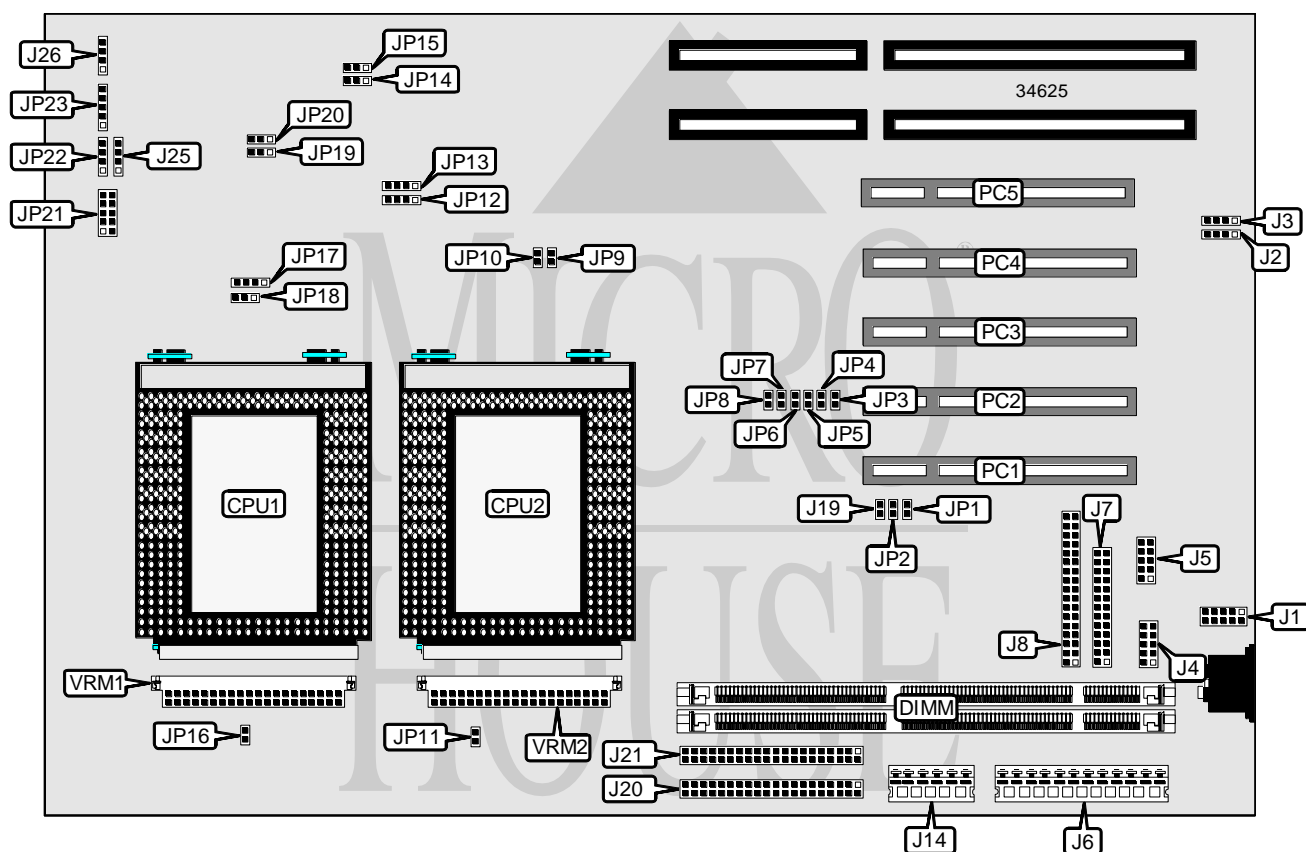


CSS LABORATORIES, INC.

M B - 6 8 6 3

Processor	Pentium Pro
Processor Speed	180/200/266MHz
Chip Set	Intel
Video Chip Set	None
Maximum Onboard Memory	512MB
Maximum Video Memory	None
Cache	256/512KB (located on Pentium Pro CPU)
BIOS	Award
Dimensions	330mm x 218mm
I/O Options	32-bit PCI slots (5), floppy drive interface, IDE interfaces (2), parallel port, PS/2 mouse interface, serial ports (2), IR connector, VRM connectors (2), USB connectors (2)
NPU Options	None



Continued on next page. . .

CSS LABORATORIES, INC.
M B - 6 8 6 3

... continued from previous page

CONNECTIONS			
Purpose	Location	Purpose	Location
PS/2 mouse/keyboard interface	J1	Speaker	J26
USB connector	J2	Chassis fan power	JP11
USB connector	J3	IR connector	JP12
Serial port 1	J4	External battery	JP13
Serial port 2	J5	Chassis fan power	JP16
5v power	J6	Front panel connector	JP21
Parallel port	J7	Reset switch	JP22/pins 1 & 2
Floppy drive interface	J8	Turbo LED	JP22/pins 3 & 4
3.3v power	J14	Power LED & keylock	JP23
IDE interface 1	J20	32-bit PCI slots	PC1 – PC5
IDE interface 2	J21	VRM connector 1	VRM1
IDE interface LED	J25	VRM connector 2	VRM2

USER CONFIGURABLE SETTINGS		
Function	Label	Position
í Factory configured - do not alter	J19	Unidentified
í Factory configured - do not alter (DBX EXTSMI)	JP7	Unidentified
í Factory configured - do not alter	JP8	Unidentified
í Factory configured - do not alter	JP17	Unidentified
í Factory configured - do not alter	JP18	Unidentified
í Factory configured - do not alter	JP19	Unidentified
í ISA bus speed select /4	JP20	Pins 2 & 3 closed
ISA bus speed select /3	JP20	Pins 1 & 2 closed

DIMM CONFIGURATION		
Size	Bank 0	Bank 1
8MB	(1) 1M x 64	None
16MB	(1) 2M x 64	None
16MB	(1) 1M x 64	(1) 1M x 64
24MB	(1) 2M x 64	(1) 1M x 64
32MB	(1) 4M x 64	None
32MB	(1) 2M x 64	(1) 2M x 64
40MB	(1) 4M x 64	(1) 1M x 64
48MB	(1) 4M x 64	(1) 2M x 64
64MB	(1) 8M x 64	None
64MB	(1) 4M x 64	(1) 4M x 64
72MB	(1) 8M x 64	(1) 1M x 64
80MB	(1) 8M x 64	(1) 2M x 64
96MB	(1) 8M x 64	(1) 4M x 64
128MB	(1) 16M x 64	None
128MB	(1) 8M x 64	(1) 8M x 64
136MB	(1) 16M x 64	(1) 1M x 64

Continued on next page...

CSS LABORATORIES, INC.
M B - 6 8 6 3

... continued from previous page

DIMM CONFIGURATION (CON'T)		
Size	Bank 0	Bank 1
144MB	(1) 16M x 64	(1) 2M x 64
160MB	(1) 16M x 64	(1) 4M x 64
192MB	(1) 16M x 64	(1) 8M x 64
256MB	(1) 16M x 64	(1) 16M x 64
256MB	(1) 32M x 64	None
264MB	(1) 32M x 64	(1) 1M x 64
272MB	(1) 32M x 64	(1) 2M x 64
288MB	(1) 32M x 64	(1) 4M x 64
320MB	(1) 32M x 64	(1) 8M x 64
384MB	(1) 32M x 64	(1) 16M x 64
512MB	(1) 32M x 64	(1) 32M x 64

CACHE CONFIGURATION
Note: 256KB/512KB cache is located on the Pentium Pro CPU.

CPU SPEED SELECTION						
CPU speed	Clock speed	Multiplier	JP1	JP2	JP3	JP4
180MHz	60MHz	3x	Closed	Open	Closed	Open
200MHz	66MHz	3x	Open	Closed	Closed	Open
266MHz	66MHz	4x	Open	Closed	Closed	Closed

CPU SPEED SELECTION (CON'T)						
CPU speed	Clock speed	Multiplier	JP5	JP6	JP9	JP10
180MHz	60MHz	3x	Closed	Closed	Open	Closed
200MHz	66MHz	3x	Closed	Closed	Closed	Open
266MHz	66MHz	4x	Open	Closed	Closed	Open

FLASH BIOS SELECTION		
Setting	JP14	JP15
í Enabled	Pins 1 & 2 closed	Pins 2 & 3 closed
Disabled	Pins 2 & 3 closed	Pins 1 & 2 closed