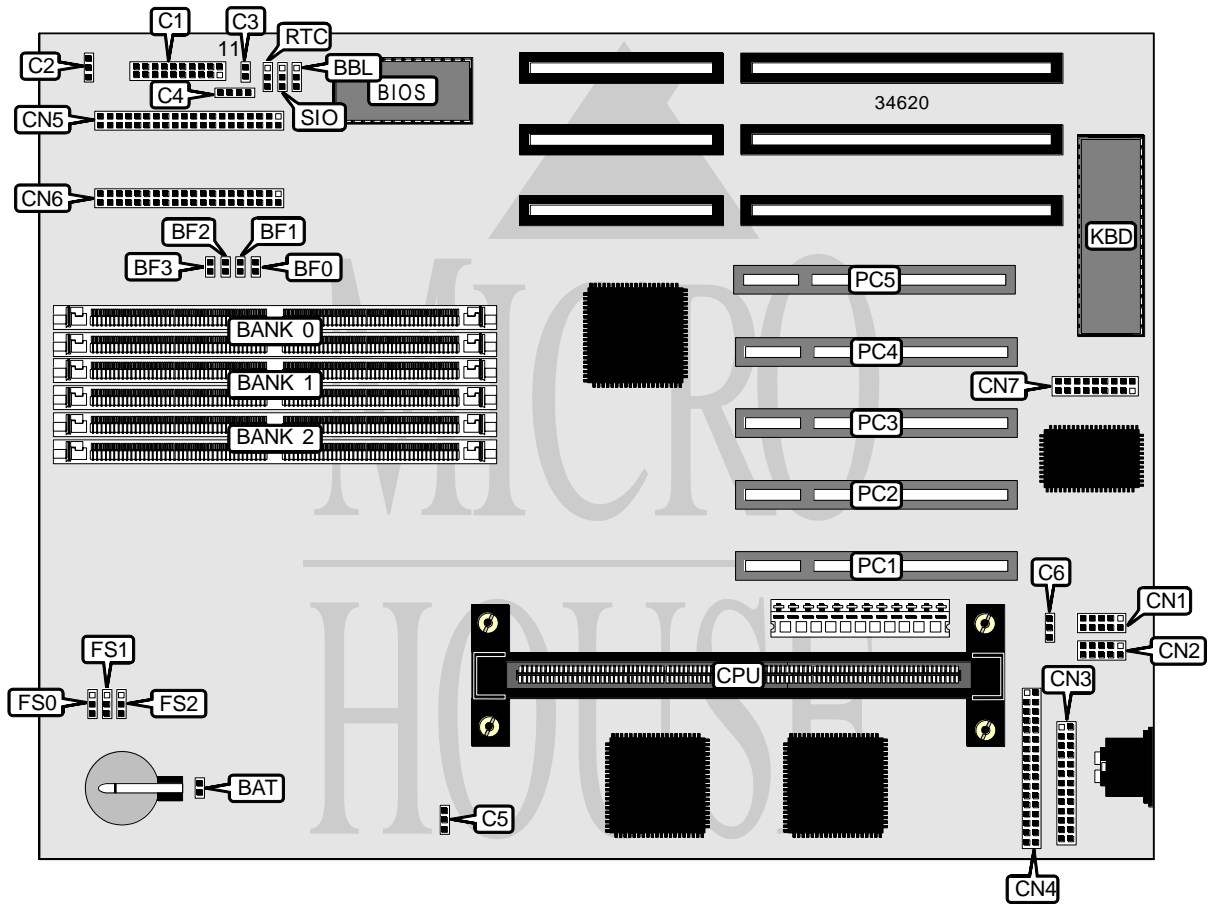


ASUS COMPUTER INTERNATIONAL

KN-97 (REV. 1.03)

Processor	Pentium Pro/Pentium II
Processor Speed	150/166/180/200/233/266/300/333MHz
Chip Set	Intel
Video Chip Set	None
Maximum Onboard Memory	384MB (EDO supported)
Maximum Video Memory	None
Cache	256/512KB (located on Pentium Pro/Pentium II CPU)
BIOS	Unidentified
Dimensions	330mm x 218mm
I/O Options	32-bit PCI slots (5), floppy drive interface, green PC connector, IDE interfaces (2), parallel port, PS/2 mouse interface, serial ports (2), IR connector, USB connector
NPU Options	None



Continued on next page...

ASUS COMPUTER INTERNATIONAL
KN-97 (REV. 1.03)

... continued from previous page

CONNECTIONS			
Purpose	Location	Purpose	Location
Power LED & keylock	C1/pins 1 - 5	Power fan	C6
Speaker	C1/pins 7 - 10	Serial port 1	CN1
Message LED	C1/pins 12 & 13	Serial port 2	CN2
Green PC connector	C1/pins 14 & 15	Parallel port	CN3
Soft off power supply	C1/pins 16 & 17	Floppy drive interface	CN4
Reset switch	C1/pins 19 & 20	IDE interface 1	CN5
Chassis fan power	C2	IDE interface 2	CN6
IDE interface LED	C3	USB, PS/2 mouse, IR connector	CN7
Chassis alarm	C4	32-bit PCI slots	PC1 – PC5
CPU fan power	C5		

USER CONFIGURABLE SETTINGS		
Function	Label	Position
í Battery current test disabled	BAT	Closed
Battery current test enabled	BAT	Open
í Flash BIOS boot block write protect disabled	BBL	Pins 1 & 2 closed
Flash BIOS boot block write protect enabled	BBL	Pins 2 & 3 closed
í CMOS memory normal operation	RTC	Pins 1 & 2 closed
CMOS memory clear	RTC	Pins 2 & 3 closed
í On board I/O enabled	SIO	Pins 1 & 2 closed
On board I/O disabled	SIO	Pins 2 & 3 closed

SIMM CONFIGURATION			
Size	Bank 0	Bank 1	Bank 2
8MB	(2) 1M x 36	None	None
16MB	(2) 1M x 36	(2) 1M x 36	None
16MB	(2) 2M x 36	None	None
24MB	(2) 1M x 36	(2) 1M x 36	(2) 1M x 36
32MB	(2) 2M x 36	(2) 2M x 36	None
32MB	(2) 4M x 36	None	None
48MB	(2) 2M x 36	(2) 2M x 36	(2) 2M x 36
64MB	(2) 4M x 36	(2) 4M x 36	None
64MB	(2) 8M x 36	None	None
96MB	(2) 4M x 36	(2) 4M x 36	(2) 4M x 36
128MB	(2) 8M x 36	(2) 8M x 36	None
128MB	(2) 16M x 36	None	None
192MB	(2) 8M x 36	(2) 8M x 36	(2) 8M x 36
256MB	(2) 16M x 36	(2) 16M x 36	None
384MB	(2) 16M x 36	(2) 16M x 36	(2) 16M x 36

Note: Board accepts EDO memory.

Continued on next page. . .

ASUS COMPUTER INTERNATIONAL
KN-97 (REV. 1.03)

... continued from previous page

CACHE CONFIGURATION

Note: 256KB/512KB cache is located on the Pentium Pro/Pentium II CPU.

CPU SPEED SELECTION (PENTIUM PRO)

CPU speed	Clock speed	Multiplier	BF0	BF1	BF2	BF3
150MHz	66MHz	2.5x	Open	Closed	Closed	Closed
166MHz	60MHz	2.5x	Open	Closed	Closed	Closed
180MHz	66MHz	3x	Closed	Open	Closed	Closed
200MHz	66MHz	3x	Closed	Open	Closed	Closed

Note: Pins designated should be in the closed position.

CPU SPEED SELECTION (PENTIUM PRO, CON'T)

CPU speed	Clock speed	Multiplier	FS0	FS1	FS2
150MHz	66MHz	2.5x	2 & 3	1 & 2	1 & 2
166MHz	60MHz	2.5x	1 & 2	1 & 2	1 & 2
180MHz	66MHz	3x	2 & 3	1 & 2	1 & 2
200MHz	66MHz	3x	1 & 2	1 & 2	1 & 2

Note: Pins designated should be in the closed position.

CPU SPEED SELECTION (PENTIUM II)

CPU speed	Clock speed	Multiplier	BF0	BF1	BF2	BF3
233MHz	66MHz	3.5x	Open	Open	Closed	Closed
266MHz	66MHz	4x	Closed	Closed	Open	Closed
300MHz	66MHz	4.5x	Open	Closed	Open	Closed
333MHz	66MHz	5x	Closed	Open	Open	Closed

Note: Pins designated should be in the closed position.

CPU SPEED SELECTION (PENTIUM II, CON'T)

CPU speed	Clock speed	Multiplier	FS0	FS1	FS2
233MHz	66MHz	3.5x	1 & 2	1 & 2	1 & 2
266MHz	66MHz	4x	1 & 2	1 & 2	1 & 2
300MHz	66MHz	4.5x	1 & 2	1 & 2	1 & 2
333MHz	66MHz	5x	1 & 2	1 & 2	1 & 2

Note: Pins designated should be in the closed position.