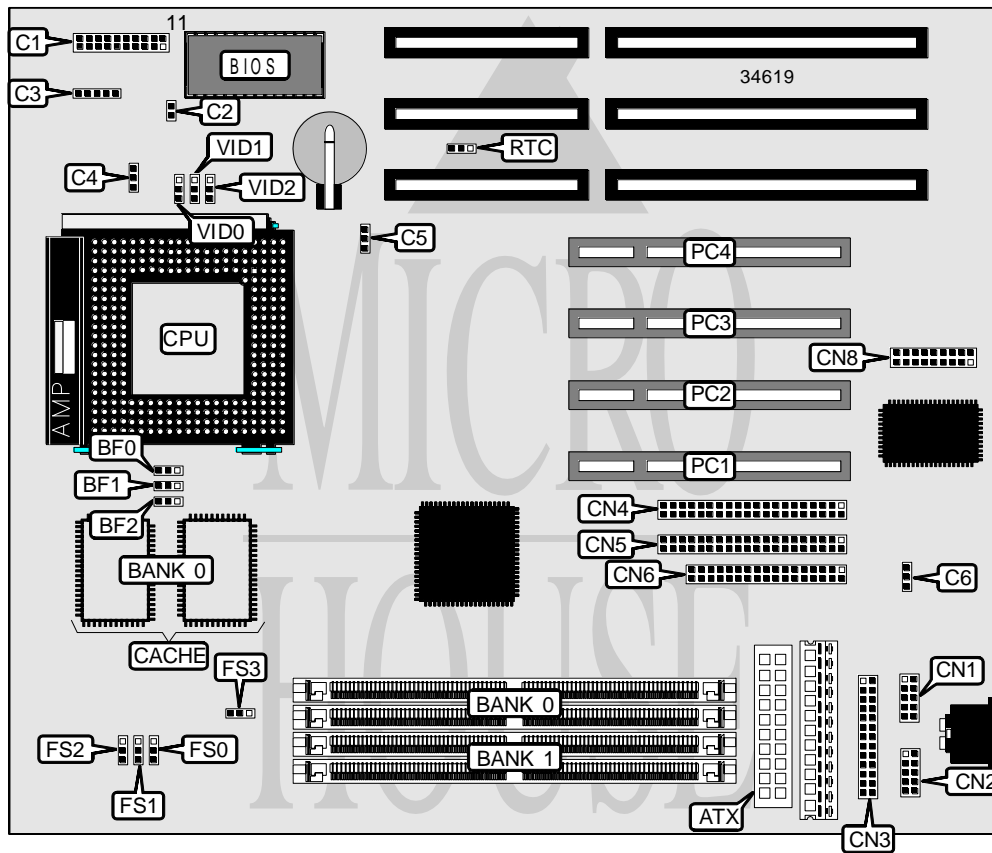


ASUS COMPUTER INTERNATIONAL

SP97 (REV. 1.02)

Processor	CX 6X86/CX 6X86/CX 686MX/IBM 6X86/IBM 6X86MX/AM K5/ K6/Pentium	AM
Processor Speed	75/90/100/120/133/150/166/200/233MHz	
Chip Set	SIS	
Video Chip Set	None	
Maximum Onboard Memory	256MB (EDO supported)	
Maximum Video Memory	None	
Cache	256/512KB	
BIOS	Unidentified	
Dimensions	254mm x 218mm	
I/O Options	32-bit PCI slots (4), floppy drive interface, green PC connector, IDE interfaces (2), parallel port, PS/2 mouse interface, serial ports (2), IR connectors (2), USB connector, ATX power connector	
NPU Options	None	



Continued on next page...

ASUS COMPUTER INTERNATIONAL
SP97 (REV. 1.02)

... continued from previous page

CONNECTIONS			
Purpose	Location	Purpose	Location
ATX power connector	ATX	CPU fan power	C5
Power LED & keylock	C1/pins 1 - 5	Power fan	C6
Speaker	C1/pins 7 - 10	Serial port 1	CN1
Message LED	C1/pins 12 & 13	Serial port 2	CN2
Green PC connector	C1/pins 14 & 15	Parallel port	CN3
Soft off power supply	C1/pins 16 & 17	IDE interface 1	CN4
Reset switch	C1/pins 19 & 20	IDE interface 2	CN5
IDE interface LED	C2	Floppy drive interface	CN6
IR connector	C3	USB, PS/2 mouse, IR connector	CN8
Chassis fan power	C4	32-bit PCI slots	PC1 – PC4

USER CONFIGURABLE SETTINGS		
Function	Label	Position
CMOS memory normal operation	RTC	Pins 1 & 2 closed
CMOS memory clear	RTC	Pins 2 & 3 closed

SIMM CONFIGURATION		
Size	Bank 0	Bank 1
8MB	(2) 1M x 36	None
16MB	(2) 2M x 36	None
16MB	(2) 1M x 36	(2) 1M x 36
24MB	(2) 2M x 36	(2) 1M x 36
32MB	(2) 4M x 36	None
32MB	(2) 2M x 36	(2) 2M x 36
40MB	(2) 4M x 36	(2) 1M x 36
48MB	(2) 4M x 36	(2) 2M x 36
64MB	(2) 8M x 36	None
64MB	(2) 4M x 36	(2) 4M x 36
72MB	(2) 8M x 36	(2) 1M x 36
80MB	(2) 8M x 36	(2) 2M x 36
96MB	(2) 8M x 36	(2) 4M x 36
128MB	(2) 8M x 36	(2) 8M x 36
128MB	(2) 16M x 36	None
136MB	(2) 16M x 36	(2) 1M x 36
144MB	(2) 16M x 36	(2) 2M x 36
160MB	(2) 16M x 36	(2) 4M x 36
192MB	(2) 16M x 36	(2) 8M x 36
256MB	(2) 16M x 36	(2) 16M x 36

Note: Board accepts EDO memory.

Continued on next page. . .

ASUS COMPUTER INTERNATIONAL
SP97 (REV. 1.02)

... continued from previous page

CACHE CONFIGURATION	
Size	Bank 0
256KB	(2) 32K x 32
512KB	(2) 64K x 32

CPU SPEED SELECTION (CX 6X86)									
CPU speed	Clock speed	Multiplier	BF0	BF1	BF2	FS0	FS1	FS2	FS3
166MHz	66MHz	2x	2 & 3	1 & 2	1 & 2	2 & 3	1 & 2	2 & 3	1 & 2
200MHz	75MHz	2x	2 & 3	1 & 2	1 & 2	1 & 2	2 & 3	1 & 2	2 & 3

Note: Pins designated should be in the closed position. 166MHz CPU must be rev. 2.7 or later.

CPU SPEED SELECTION (IBM 6X86)									
CPU speed	Clock speed	Multiplier	BF0	BF1	BF2	FS0	FS1	FS2	FS3
166MHz	66MHz	2x	2 & 3	1 & 2	1 & 2	2 & 3	1 & 2	2 & 3	1 & 2
200MHz	75MHz	2x	2 & 3	1 & 2	1 & 2	1 & 2	2 & 3	1 & 2	2 & 3

Note: Pins designated should be in the closed position. 166MHz CPU must be rev. 2.7 or later.

CPU SPEED SELECTION (CX 6X86MX)									
CPU speed	Clock speed	Multiplier	BF0	BF1	BF2	FS0	FS1	FS2	FS3
166MHz	60MHz	2.5x	2 & 3	2 & 3	1 & 2	1 & 2	2 & 3	2 & 3	1 & 2
200MHz	66MHz	2.5x	2 & 3	2 & 3	1 & 2	2 & 3	1 & 2	2 & 3	1 & 2
233MHz	66MHz	3x	1 & 2	2 & 3	1 & 2	2 & 3	1 & 2	2 & 3	1 & 2

Note: Pins designated should be in the closed position.

CPU SPEED SELECTION (IBM 6X86MX)									
CPU speed	Clock speed	Multiplier	BF0	BF1	BF2	FS0	FS1	FS2	FS3
166MHz	60MHz	2.5x	2 & 3	2 & 3	1 & 2	1 & 2	2 & 3	2 & 3	1 & 2
200MHz	66MHz	2.5x	2 & 3	2 & 3	1 & 2	2 & 3	1 & 2	2 & 3	1 & 2
233MHz	66MHz	3x	1 & 2	2 & 3	1 & 2	2 & 3	1 & 2	2 & 3	1 & 2

Note: Pins designated should be in the closed position.

CPU SPEED SELECTION (AM K5)									
CPU speed	Clock speed	Multiplier	BF0	BF1	BF2	FS0	FS1	FS2	FS3
75MHz	50MHz	1.5x	1 & 2	1 & 2	1 & 2	2 & 3	2 & 3	2 & 3	1 & 2
90MHz	60MHz	1.5x	1 & 2	1 & 2	1 & 2	1 & 2	2 & 3	2 & 3	1 & 2
100MHz	66MHz	1.5x	1 & 2	1 & 2	1 & 2	2 & 3	1 & 2	2 & 3	1 & 2
120MHz	60MHz	1.5x	1 & 2	1 & 2	1 & 2	1 & 2	2 & 3	2 & 3	1 & 2
133MHz	66MHz	1.5x	1 & 2	1 & 2	1 & 2	2 & 3	1 & 2	2 & 3	1 & 2

Note: Pins designated should be in the closed position.

Continued on next page...

ASUS COMPUTER INTERNATIONAL
SP97 (REV. 1.02)

... continued from previous page

CPU SPEED SELECTION (AM K6)									
CPU speed	Clock speed	Multiplier	BF0	BF1	BF2	FS0	FS1	FS2	FS3
166MHz	66MHz	2.5x	2 & 3	2 & 3	1 & 2	2 & 3	1 & 2	2 & 3	1 & 2
200MHz	66MHz	3x	1 & 2	2 & 3	1 & 2	2 & 3	1 & 2	2 & 3	1 & 2
233MHz	66MHz	3.5x	1 & 2	1 & 2	1 & 2	2 & 3	1 & 2	2 & 3	1 & 2

Note: Pins designated should be in the closed position.

CPU SPEED SELECTION (INTEL)									
CPU speed	Clock speed	Multiplier	BF0	BF1	BF2	FS0	FS1	FS2	FS3
75MHz	50MHz	1.5x	1 & 2	1 & 2	1 & 2	2 & 3	2 & 3	2 & 3	1 & 2
90MHz	60MHz	1.5x	1 & 2	1 & 2	1 & 2	1 & 2	2 & 3	2 & 3	1 & 2
100MHz	66MHz	1.5x	1 & 2	1 & 2	1 & 2	2 & 3	1 & 2	2 & 3	1 & 2
120MHz	60MHz	2x	2 & 3	1 & 2	1 & 2	1 & 2	2 & 3	2 & 3	1 & 2
133MHz	66MHz	2x	2 & 3	1 & 2	1 & 2	2 & 3	1 & 2	2 & 3	1 & 2
150MHz	60MHz	2.5x	2 & 3	2 & 3	1 & 2	1 & 2	2 & 3	2 & 3	1 & 2
166MHz	66MHz	2.5x	2 & 3	2 & 3	1 & 2	2 & 3	1 & 2	2 & 3	1 & 2
200MHz	66MHz	3x	1 & 2	2 & 3	1 & 2	2 & 3	1 & 2	2 & 3	1 & 2
233MHz	66MHz	3.5x	1 & 2	1 & 2	1 & 2	2 & 3	1 & 2	2 & 3	1 & 2

Note: Pins designated should be in the closed position.

CPU VOLTAGE SELECTION (SINGLE)			
Voltage	VID0	VID1	VID2
3.4v	Pins 2 & 3 closed	Pins 2 & 3 closed	Pins 2 & 3 closed
3.5v	Pins 1 & 2 closed	Pins 1 & 2 closed	Pins 2 & 3 closed

CPU VOLTAGE SELECTION (DUAL)			
Voltage	VID0	VID1	VID2
2.8v	Pins 2 & 3 closed	Pins 2 & 3 closed	Pins 2 & 3 closed
2.9v	Pins 1 & 2 closed	Pins 2 & 3 closed	Pins 2 & 3 closed
3.2v	Pins 2 & 3 closed	Pins 2 & 3 closed	Pins 1 & 2 closed