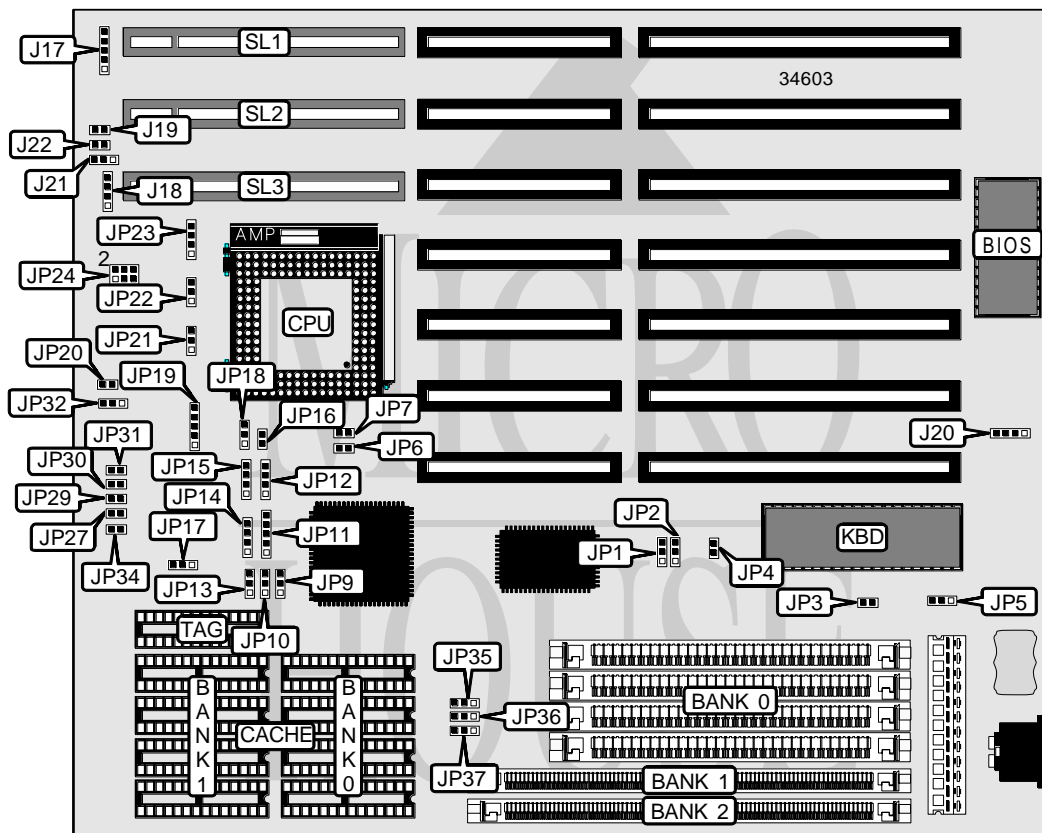


SOYO COMPUTER CO., LTD.
SY-25 J/K/L

Processor	CX486S/80486SX/CX486DX/AM486DX/SL80486DX/AM486DX2/ 80486DX2/AM486DX4/80486DX4/P24D/P24T
Processor Speed	25/33/40/50(internal)/50/66(internal)/75(internal)/100(internal)MHz
Chip Set	Unidentified
Video Chip Set	None
Maximum Onboard Memory	128MB (EDO supported)
Maximum Video Memory	None
Cache	64/128/256KB
BIOS	Award
Dimensions	254mm x 218mm
I/O Options	32-bit VESA local bus slots (3), green PC connector
NPU Options	None



Continued on next page. . .

SOYO COMPUTER CO., LTD.
SY-25 J/K/L

... continued from previous page

CONNECTIONS			
Purpose	Location	Purpose	Location
Power LED & keylock	J17	Turbo LED	J22
Speaker	J18	Green PC connector	JP4
Reset switch	J19	Green PC connector	JP6
External battery	J20	Green PC connector	JP7
Turbo switch	J21	32-bit VESA local bus slots	SL1 – SL3

USER CONFIGURABLE SETTINGS		
Function	Label	Position
í Monitor type select monochrome	JP3	Open
Monitor type select color/EGA/VGA	JP3	Closed
í CMOS memory normal operation	JP5	Pins 1 & 2 closed
CMOS memory clear	JP5	Pins 2 & 3 closed
í Factory configured - do not alter	JP17	Pins 1 & 2 closed
í Factory configured - do not alter	JP27	Pins 1 & 2 closed
í Factory configured - do not alter	JP32	Pins 1 & 2 closed
í Factory configured - do not alter	JP34	Unidentified

SIMM CONFIGURATION 1			
Size	Bank 0	Bank 1	Bank 2
1MB	(4) 256K x 9	None	None
2MB	(4) 256K x 9	(1) 256K x 36	None
4MB	(4) 1M x 9	None	None
5MB	(4) 256K x 9	(1) 1M x 36	None
6MB	(4) 256K x 9	(1) 256K x 36	(1) 1M x 36
8MB	(4) 1M x 9	(1) 1M x 36	None
12MB	(4) 1M x 9	(1) 1M x 36	(1) 1M x 36
16MB	(4) 4M x 9	None	None
17MB	(4) 256K x 9	(1) 4M x 36	None
18MB	(4) 256K x 9	(1) 256K x 36	(1) 4M x 36
20MB	(4) 1M x 9	(1) 4M x 36	None
24MB	(4) 1M x 9	(1) 1M x 36	(1) 4M x 36
32MB	(4) 4M x 9	(1) 4M x 36	None
36MB	(4) 1M x 9	(1) 4M x 36	(1) 4M x 36
48MB	(4) 4M x 9	(1) 4M x 36	(1) 4M x 36
64MB	(4) 16M x 9	None	None
65MB	(4) 256K x 9	(1) 16M x 36	None
68MB	(4) 1M x 9	(1) 16M x 36	None
72MB	(4) 1M x 9	(1) 1M x 36	(1) 16M x 36
80MB	(4) 4M x 9	(1) 16M x 36	None
96MB	(4) 4M x 9	(1) 4M x 36	(1) 16M x 36
128MB	(4) 16M x 9	(1) 16M x 36	None

Continued on next page. . .

SOYO COMPUTER CO., LTD.
SY-25 J/K/L

... continued from previous page

SIMM CONFIGURATION 2			
Size	Bank 0	Bank 1	Bank 2
1MB	None	(1) 256K x 36	None
2MB	None	(1) 256K x 36	(1) 256K x 36
2MB	None	(1) 512K x 36	None
4MB	None	(1) 512K x 36	(1) 512K x 36
4MB	None	(1) 1M x 36	None
5MB	None	(1) 256K x 36	(1) 1M x 36
6MB	(4) 1M x 9	(1) 256K x 36	(1) 256K x 36
6MB	None	(1) 512K x 36	(1) 1M x 36
8MB	None	(1) 1M x 36	(1) 1M x 36
8MB	None	(1) 2M x 36	None
12MB	(4) 1M x 9	(1) 1M x 36	(1) 1M x 36
12MB	None	(1) 1M x 36	(1) 2M x 36
16MB	None	(1) 2M x 36	(1) 2M x 36
16MB	None	(1) 4M x 36	None
17MB	None	(1) 256K x 36	(1) 4M x 36
18MB	(4) 4M x 9	(1) 256K x 36	(1) 256K x 36
18MB	None	(1) 512K x 36	(1) 4M x 36
20MB	None	(1) 1M x 36	(1) 4M x 36
24MB	(4) 4M x 9	(1) 1M x 36	(1) 1M x 36
32MB	None	(1) 4M x 36	(1) 4M x 36
32MB	None	(1) 8M x 36	None
36MB	(4) 4M x 9	(1) 1M x 36	(1) 4M x 36
36MB	None	(1) 1M x 36	(1) 8M x 36
48MB	(4) 4M x 9	(1) 4M x 36	(1) 4M x 36
48MB	None	(1) 4M x 36	(1) 8M x 36
64MB	None	(1) 8M x 36	(1) 8M x 36
65MB	None	(1) 256K x 36	(1) 16M x 36
68MB	None	(1) 1M x 36	(1) 16M x 36
72MB	(4) 16M x 9	(1) 1M x 36	(1) 1M x 36
80MB	None	(1) 4M x 36	(1) 16M x 36
96MB	(4) 16M x 9	(1) 4M x 36	(1) 4M x 36
128MB	None	(1) 16M x 36	(1) 16M x 36

Note: Board also accepts x 32 SIMMs.

SIMM JUMPER CONFIGURATION			
Configuration	JP35	JP36	JP37
1	Pins 1 & 2 closed	Pins 1 & 2 closed	Pins 1 & 2 closed
2	Pins 2 & 3 closed	Pins 2 & 3 closed	Pins 2 & 3 closed

Continued on next page...

SOYO COMPUTER CO., LTD.
SY-25 J/K/L

... continued from previous page

CACHE CONFIGURATION			
Size	Bank 0	Bank 1	TAG
64KB	(4) 8K x 8	(4) 8K x 8	(1) 8K x 8
128KB	(4) 32K x 8	None	(1) 8K x 8
256KB (A)	(4) 32K x 8	(4) 32K x 8	(1) 16K/32K x 8
256KB (B)	(4) 64K x 8	None	(1) 16K/32K x 8

CACHE JUMPER CONFIGURATION			
Size	JP9	JP10	JP13
64KB	Pins 2 & 3 closed	Open	Pins 1 & 2 closed
128KB	Pins 2 & 3 closed	Pins 1 & 2 closed	Pins 2 & 3 closed
256KB (A)	Pins 1 & 2 closed	Pins 2 & 3 closed	Pins 2 & 3 closed
256KB (B)	Pins 1 & 2 closed	Pins 2 & 3 closed	Pins 2 & 3 closed

CPU SPEED SELECTION			
Speed	JP29	JP30	JP31
25MHz	Closed	Open	Closed
33MHz	Open	Closed	Closed
40MHz	Closed	Open	Open
50iMHz	Closed	Open	Closed
50MHz	Open	Closed	Open
66iMHz	Open	Closed	Closed
75iMHz	Closed	Open	Closed
80iMHz	Closed	Open	Open
100iMHz	Open	Closed	Closed

CPU TYPE SELECTION					
Type	JP1	JP2	JP11	JP12	JP14
CX 486S	1 & 2	2 & 3	2 & 3	1 & 2	1 & 2
80486SX	2 & 3	1 & 2	3 & 4	2 & 3	2 & 3
CX 486DX	1 & 2	2 & 3	2 & 3	1 & 2	1 & 2
AM486DX	2 & 3	1 & 2	3 & 4	2 & 3	3 & 4
SL80486DX	2 & 3	1 & 2	3 & 4	2 & 3	3 & 4
AM486DX2	2 & 3	1 & 2	3 & 4	2 & 3	3 & 4
80486DX2	2 & 3	1 & 2	3 & 4	2 & 3	3 & 4
AM486DX4	2 & 3	1 & 2	3 & 4	2 & 3	3 & 4
80486DX4	2 & 3	1 & 2	3 & 4	2 & 3	3 & 4
80486DX4 (ODP)	2 & 3	1 & 2	3 & 4	2 & 3	3 & 4
P24D	1 & 2	1 & 2	1 & 2, 3 & 4	2 & 3	1 & 2, 3 & 4
P24T	2 & 3	1 & 2	3 & 4	2 & 3	3 & 4

Note: Pins designated should be in the closed position.

Continued on next page...

SOYO COMPUTER CO., LTD.
SY-25 J/K/L

... continued from previous page

CPU TYPE SELECTION (CON'T)				
Type	JP15	JP16	JP18	JP19
CX 486S	2 & 3	Open	2 & 3	2 & 3
80486SX	Open	Open	2 & 3	4 & 5
CX 486DX	2 & 3	Open	2 & 3	2 & 3
AM486DX	2 & 3	Open	2 & 3	4 & 5
SL80486DX	2 & 3	Open	2 & 3	4 & 5
AM486DX2	2 & 3	Open	2 & 3	4 & 5
80486DX2	2 & 3	Open	2 & 3	4 & 5
AM486DX4	2 & 3	Open	2 & 3	4 & 5
80486DX4	2 & 3	Open	2 & 3	4 & 5
80486DX4 (ODP)	2 & 3	Open	2 & 3	4 & 5
P24D	2 & 3	Closed	1 & 2	4 & 5
P24T	1 & 2	Open	2 & 3	1 & 2

Note: Pins designated should be in the closed position.

CPU TYPE SELECTION (CON'T)				
Type	JP20	JP21	JP22	JP23
CX 486S	Open	Open	2 & 3	2 & 3
80486SX	Open	1 & 2	Open	Open
CX 486DX	Open	Open	2 & 3	2 & 3
AM486DX	Open	1 & 2	Open	Open
SL80486DX	Open	1 & 2	Open	Open
AM486DX2	2 & 3	1 & 2	Open	Open
80486DX2	Open	1 & 2	Open	Open
AM486DX4	1 & 2	1 & 2	Open	Open
80486DX4	Open	1 & 2	Open	Open
80486DX4 (ODP)	Open	1 & 2	Open	Open
P24D	1 & 2	2 & 3	1 & 2	Open
P24T	Open	Open	1 & 2	1 & 2

Note: Pins designated should be in the closed position.

CPU VOLTAGE SELECTION	
Voltage	JP24
3.45v	Pins 3 & 5, 4 & 6 closed
5v	Pins 1 & 3, 2 & 4 closed