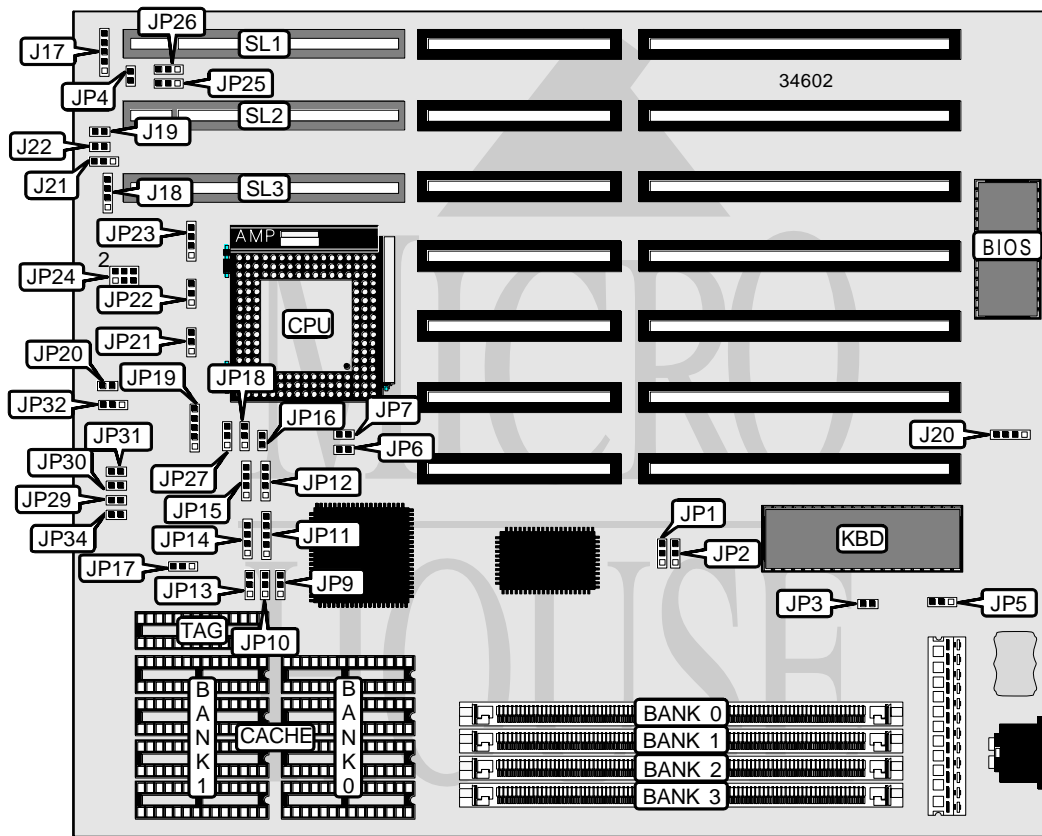


SOYO COMPUTER CO., LTD.
SY-25M/N/P

| | |
|-------------------------------|--|
| Processor | CX486S/80486SX/80486DX/AM486DX/80486DX2/CX486DX/ 80486DX4/P24D/P24T |
| Processor Speed | 25/33/40/50(internal)/50/66(internal)/75(internal)/100(internal)MHz |
| Chip Set | Unidentified |
| Video Chip Set | None |
| Maximum Onboard Memory | 128MB (EDO supported) |
| Maximum Video Memory | None |
| Cache | 64/128/256KB |
| BIOS | Award |
| Dimensions | 254mm x 218mm |
| I/O Options | 32-bit VESA local bus slots (3), green PC connector |
| NPU Options | None |



JP8
LOCATION UNIDENTIFIED

Continued on next page...

... continued from previous page

| CONNECTIONS | | | |
|---------------------|----------|-----------------------------|-----------|
| Purpose | Location | Purpose | Location |
| Power LED & keylock | J17 | Green PC connector | JP4 |
| Speaker | J18 | Green PC connector | JP6 |
| Reset switch | J19 | Green PC connector | JP7 |
| External battery | J20 | Green PC connector | JP8 |
| Turbo switch | J21 | 32-bit VESA local bus slots | SL1 – SL3 |
| Turbo LED | J22 | | |

| USER CONFIGURABLE SETTINGS | | |
|-------------------------------------|-------|-------------------|
| Function | Label | Position |
| í Monitor type select monochrome | JP3 | Open |
| Monitor type select color/EGA/VGA | JP3 | Closed |
| í CMOS memory normal operation | JP5 | Pins 1 & 2 closed |
| CMOS memory clear | JP5 | Pins 2 & 3 closed |
| í Factory configured - do not alter | JP17 | Pins 2 & 3 closed |
| í Factory configured - do not alter | JP27 | Pins 1 & 2 closed |
| í Factory configured - do not alter | JP34 | Unidentified |

| SIMM CONFIGURATION | | | | |
|--------------------|---------------|---------------|---------------|-------------|
| Size | Bank 0 | Bank 1 | Bank 2 | Bank 3 |
| 1MB | (1) 256K x 36 | None | None | None |
| 2MB | (1) 256K x 36 | (1) 256K x 36 | None | None |
| 2MB | (1) 512K x 36 | None | None | None |
| 4MB | (1) 256K x 36 | (1) 256K x 36 | (1) 512K x 36 | None |
| 4MB | (1) 512K x 36 | (1) 512K x 36 | None | None |
| 4MB | (1) 1M x 36 | None | None | None |
| 5MB | (1) 256K x 36 | (1) 1M x 36 | None | None |
| 6MB | (1) 256K x 36 | (1) 256K x 36 | (1) 1M x 36 | None |
| 6MB | (1) 256K x 36 | (1) 256K x 36 | (1) 1M x 36 | None |
| 8MB | (1) 256K x 36 | (1) 256K x 36 | (1) 512K x 36 | (1) 1M x 36 |
| 8MB | (1) 512K x 36 | (1) 512K x 36 | (1) 1M x 36 | None |
| 8MB | (1) 1M x 36 | (1) 1M x 36 | None | None |
| 8MB | (1) 2M x 36 | None | None | None |
| 10MB | (1) 256K x 36 | (1) 256K x 36 | (1) 1M x 36 | (1) 1M x 36 |
| 12MB | (1) 512K x 36 | (1) 512K x 36 | (1) 1M x 36 | (1) 1M x 36 |
| 12MB | (1) 1M x 36 | (1) 1M x 36 | (1) 1M x 36 | None |
| 16MB | (1) 1M x 36 | (1) 1M x 36 | (1) 1M x 36 | (1) 1M x 36 |
| 16MB | (1) 2M x 36 | (1) 2M x 36 | None | None |
| 16MB | (1) 4M x 36 | None | None | None |
| 17MB | (1) 256K x 36 | (1) 4M x 36 | None | None |
| 18MB | (1) 256K x 36 | (1) 256K x 36 | (1) 4M x 36 | None |
| 18MB | (1) 512K x 36 | (1) 4M x 36 | None | None |

Continued on next page...

SOYO COMPUTER CO., LTD.
SY-25M/N/P

... continued from previous page

| SIMM CONFIGURATION (CON'T) | | | | |
|----------------------------|---------------|---------------|--------------|-------------|
| Size | Bank 0 | Bank 1 | Bank 2 | Bank 3 |
| 20MB | (1) 512K x 36 | (1) 512K x 36 | (1) 4M x 36 | None |
| 20MB | (1) 1M x 36 | (1) 4M x 36 | None | None |
| 24MB | (1) 512K x 36 | (1) 512K x 36 | (1) 1M x 36 | (1) 4M x 36 |
| 24MB | (1) 1M x 36 | (1) 1M x 36 | (1) 4M x 36 | None |
| 24MB | (1) 2M x 36 | (1) 2M x 36 | (1) 2M x 36 | None |
| 32MB | (1) 2M x 36 | (1) 2M x 36 | (1) 2M x 36 | (1) 2M x 36 |
| 32MB | (1) 4M x 36 | (1) 4M x 36 | None | None |
| 32MB | (1) 8M x 36 | None | None | None |
| 36MB | (1) 512K x 36 | (1) 512K x 36 | (1) 4M x 36 | (1) 4M x 36 |
| 36MB | (1) 1M x 36 | (1) 4M x 36 | (1) 4M x 36 | None |
| 36MB | (1) 1M x 36 | (1) 8M x 36 | None | None |
| 40MB | (1) 1M x 36 | (1) 1M x 36 | (1) 4M x 36 | (1) 4M x 36 |
| 48MB | (1) 4M x 36 | (1) 4M x 36 | (1) 4M x 36 | None |
| 48MB | (1) 4M x 36 | (1) 8M x 36 | None | None |
| 64MB | (1) 4M x 36 | (1) 4M x 36 | (1) 4M x 36 | (1) 4M x 36 |
| 64MB | (1) 4M x 36 | (1) 4M x 36 | (1) 8M x 36 | None |
| 64MB | (1) 16M x 36 | None | None | None |
| 64MB | (1) 8M x 36 | (1) 8M x 36 | None | None |
| 65MB | (1) 256K x 36 | (1) 16M x 36 | None | None |
| 68MB | (1) 1M x 36 | (1) 16M x 36 | None | None |
| 68MB | (1) 1M x 36 | (1) 8M x 36 | (1) 8M x 36 | None |
| 72MB | (1) 1M x 36 | (1) 1M x 36 | (1) 16M x 36 | None |
| 72MB | (1) 1M x 36 | (1) 1M x 36 | (1) 8M x 36 | (1) 8M x 36 |
| 80MB | (1) 4M x 36 | (1) 16M x 36 | None | None |
| 80MB | (1) 4M x 36 | (1) 8M x 36 | (1) 8M x 36 | None |
| 96MB | (1) 4M x 36 | (1) 4M x 36 | (1) 16M x 36 | None |
| 96MB | (1) 4M x 36 | (1) 4M x 36 | (1) 8M x 36 | (1) 8M x 36 |
| 96MB | (1) 8M x 36 | (1) 8M x 36 | (1) 8M x 36 | None |
| 128MB | (1) 16M x 36 | (1) 16M x 36 | None | None |
| 128MB | (1) 8M x 36 | (1) 8M x 36 | (1) 8M x 36 | (1) 8M x 36 |

| CACHE CONFIGURATION | | | |
|---------------------|-------------|-------------|-----------------|
| Size | Bank 0 | Bank 1 | TAG |
| 64KB | (4) 8K x 8 | (4) 8K x 8 | (1) 8K x 8 |
| 128KB | (4) 32K x 8 | None | (1) 8K x 8 |
| 256KB (A) | (4) 32K x 8 | (4) 32K x 8 | (1) 16K/32K x 8 |
| 256KB (B) | (4) 64K x 8 | None | (1) 16K/32K x 8 |

Continued on next page...

SOYO COMPUTER CO., LTD.
SY-25M/N/P

... continued from previous page

| CACHE JUMPER CONFIGURATION | | | |
|----------------------------|-------------------|-------------------|-------------------|
| Size | JP9 | JP10 | JP13 |
| 64KB | Pins 2 & 3 closed | Open | Pins 1 & 2 closed |
| 128KB | Pins 2 & 3 closed | Pins 1 & 2 closed | Pins 2 & 3 closed |
| 256KB (A) | Pins 1 & 2 closed | Pins 2 & 3 closed | Pins 2 & 3 closed |
| 256KB (B) | Pins 1 & 2 closed | Pins 2 & 3 closed | Pins 2 & 3 closed |

| CPU SPEED SELECTION | | | |
|---------------------|--------|--------|--------|
| Speed | JP29 | JP30 | JP31 |
| 25MHz | Closed | Open | Closed |
| 33MHz | Open | Closed | Closed |
| 40MHz | Closed | Open | Open |
| 50iMHz | Closed | Open | Closed |
| 50MHz | Open | Closed | Open |
| 66iMHz | Open | Closed | Closed |
| 75iMHz | Closed | Open | Closed |
| 100iMHz | Open | Closed | Closed |

| CPU TYPE SELECTION | | | | | |
|--------------------|-------|-------|--------------|-------|--------------|
| Type | JP1 | JP2 | JP11 | JP12 | JP14 |
| CX 486S | 1 & 2 | 2 & 3 | 2 & 3 | 1 & 2 | 2 & 3 |
| 80486SX | 2 & 3 | 1 & 2 | 3 & 4 | 2 & 3 | 2 & 3 |
| CX 486DX | 1 & 2 | 2 & 3 | 2 & 3 | 1 & 2 | 1 & 2 |
| 80486DX | 2 & 3 | 1 & 2 | 3 & 4 | 2 & 3 | 1 & 2 |
| AM486DX | 2 & 3 | 1 & 2 | 3 & 4 | 2 & 3 | 1 & 2 |
| 80486DX2 | 2 & 3 | 1 & 2 | 3 & 4 | 2 & 3 | 1 & 2 |
| 80486DX4 | 2 & 3 | 1 & 2 | 3 & 4 | 2 & 3 | 1 & 2 |
| P24D | 2 & 3 | 1 & 2 | 1 & 2, 3 & 4 | 2 & 3 | 1 & 2, 3 & 4 |
| P24T | 2 & 3 | 1 & 2 | 3 & 4 | 2 & 3 | 2 & 3 |

Note: Pins designated should be in the closed position.

| CPU TYPE SELECTION (CON'T) | | | | | |
|----------------------------|-------|--------|-------|-------|------|
| Type | JP15 | JP16 | JP18 | JP19 | JP20 |
| CX 486S | Open | Open | 2 & 3 | 2 & 3 | Open |
| 80486SX | Open | Open | 2 & 3 | 4 & 5 | Open |
| CX 486DX | 3 & 4 | Open | 2 & 3 | 2 & 3 | Open |
| 80486DX | 3 & 4 | Open | 2 & 3 | 4 & 5 | Open |
| AM486DX | 3 & 4 | Open | 2 & 3 | 4 & 5 | Open |
| 80486DX2 | 3 & 4 | Open | 2 & 3 | 4 & 5 | Open |
| 80486DX4 | 3 & 4 | Open | 2 & 3 | 4 & 5 | Open |
| P24D | 3 & 4 | Closed | 1 & 2 | 4 & 5 | Open |
| P24T | 2 & 3 | Open | 1 & 2 | 1 & 2 | Open |

Note: Pins designated should be in the closed position.

Continued on next page...

SOYO COMPUTER CO., LTD.
SY-25M/N/P

... continued from previous page

| CPU TYPE SELECTION (CON'T) | | | | |
|----------------------------|-------|-------|-------|-------|
| Type | JP21 | JP22 | JP23 | JP32 |
| CX 486S | Open | 2 & 3 | 2 & 3 | 1 & 2 |
| 80486SX | 1 & 2 | Open | Open | 1 & 2 |
| CX 486DX | Open | 2 & 3 | 2 & 3 | 1 & 2 |
| 80486DX | 1 & 2 | Open | Open | 1 & 2 |
| AM486DX | 1 & 2 | Open | Open | 1 & 2 |
| 80486DX2 | 1 & 2 | Open | Open | 1 & 2 |
| 80486DX4 | 1 & 2 | Open | Open | 1 & 2 |
| P24D | 2 & 3 | 1 & 2 | Open | 1 & 2 |
| P24T | Open | 1 & 2 | 1 & 2 | 1 & 2 |

Note: Pins designated should be in the closed position.

| CPU VOLTAGE SELECTION | |
|-----------------------|--------------------------|
| Voltage | JP24 |
| 3.3v | Pins 3 & 5, 4 & 6 closed |
| 5v | Pins 1 & 3, 2 & 4 closed |

| VL BUS WAIT STATE SELECTION | |
|-----------------------------|-------------------|
| Setting | JP25 |
| 0 | Pins 1 & 2 closed |
| 1 | Pins 2 & 3 closed |

| VL BUS SPEED SELECTION | |
|------------------------|-------------------|
| Speed | JP26 |
| <= 33MHz | Pins 1 & 2 closed |
| >33 MHz | Pins 2 & 3 closed |