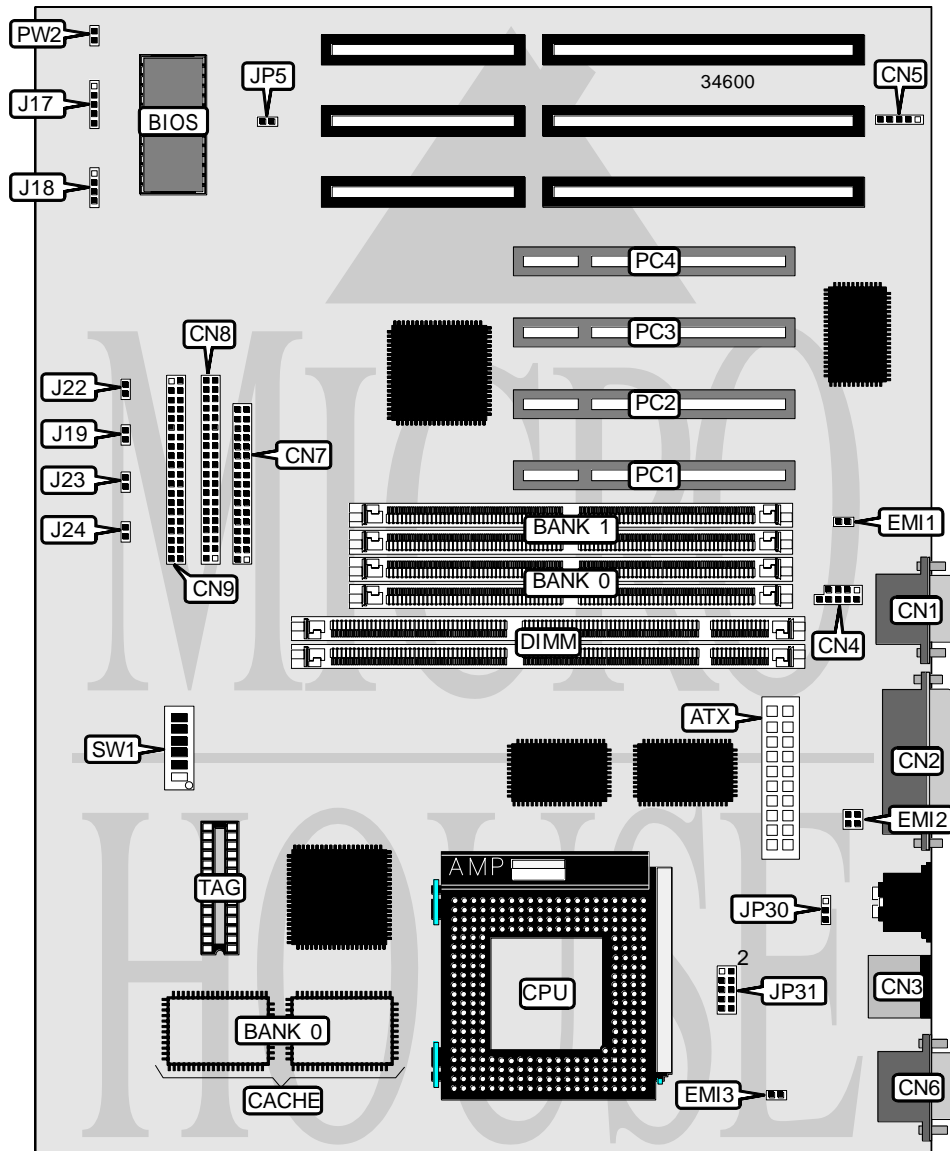


SOYO COMPUTER CO., LTD.

5 V M 2 / M 5

Processor	CX 6X86/CX 6X86L/AM K5/AM K6/Pentium
Processor Speed	75/90/100/120/133/150/166/180/200/233/266MHz
Chip Set	Intel
Video Chip Set	None
Maximum Onboard Memory	128MB (EDO supported)
Maximum Video Memory	None
Cache	256/512KB
BIOS	Unidentified
Dimensions	305mm x 244mm
I/O Options	32-bit PCI slots (4), floppy drive interface, green PC connector, IDE interfaces (2), parallel port, PS/2 mouse port, serial ports (2), IR connector, USB connector, ATX connector
NPU Options	None



Continued on next page. . .

... continued from previous page

CONNECTIONS			
Purpose	Location	Purpose	Location
ATX power connector	ATX	IDE interface 2	CN9
Serial port 2	CN1	Power LED & keylock	J17
Parallel port	CN2	Speaker	J18
PS/2 mouse port	CN3	Reset switch	J19
USB connector	CN4	Turbo LED	J22
IR connector	CN5	Green PC connector	J23
Serial port 1	CN6	IDE interface LED	J24
Floppy drive interface	CN7	32-bit PCI slots	PC1 – PC4
IDE interface 1	CN8	Soft off power supply	PW2

USER CONFIGURABLE SETTINGS		
Function	Label	Position
CMOS memory normal operation	JP5	Open
CMOS memory clear	JP5	Closed

SIMM CONFIGURATION		
Size	Bank 0	Bank 1
8MB	(2) 1M x 36	None
16MB	(2) 2M x 36	None
16MB	(2) 1M x 36	(2) 1M x 36
24MB	(2) 2M x 36	(2) 1M x 36
32MB	(2) 4M x 36	None
32MB	(2) 2M x 36	(2) 2M x 36
40MB	(2) 4M x 36	(2) 1M x 36
48MB	(2) 4M x 36	(2) 2M x 36
64MB	(2) 8M x 36	None
64MB	(2) 4M x 36	(2) 4M x 36
72MB	(2) 8M x 36	(2) 1M x 36
80MB	(2) 8M x 36	(2) 2M x 36
96MB	(2) 8M x 36	(2) 4M x 36
128MB	(2) 8M x 36	(2) 8M x 36

Note: Board accepts EDO memory.

DIMM CONFIGURATION		
Size	Bank 0	Bank 1
8MB	(1) 1M x 64	None
16MB	(1) 2M x 64	None
16MB	(1) 1M x 64	(1) 1M x 64
24MB	(1) 2M x 64	(1) 1M x 64
32MB	(1) 4M x 64	None
32MB	(1) 2M x 64	(1) 2M x 64
40MB	(1) 4M x 64	(1) 1M x 64
48MB	(1) 4M x 64	(1) 2M x 64
64MB	(1) 4M x 64	(1) 4M x 64

Continued on next page. . .

SOYO COMPUTER CO., LTD.
5 V M 2 / M 5

... continued from previous page

CACHE CONFIGURATION		
Size	Bank 0	TAG
256KB	(2) 32K x 32	(1) 16K x 8
512KB	(2) 64K x 32	(1) 16K x 8

CPU SPEED SELECTION (CX 6X86/6X 86L)								
CPU speed	Clock speed	Multiplier	SW1/1	SW1/2	SW1/3	SW1/4	SW1/5	SW1/6
133MHz	55MHz	2x	On	Off	On	Off	On	Off
150MHz	60MHz	2x	On	Off	On	Off	Off	Off
166MHz	66MHz	2x	On	Off	Off	On	Off	Off
200MHz	75MHz	2x	On	Off	Off	On	On	Off

CPU SPEED SELECTION (AM K5)								
CPU speed	Clock speed	Multiplier	SW1/1	SW1/2	SW1/3	SW1/4	SW1/5	SW1/6
75MHz	50MHz	1.5x	Off	Off	On	On	Off	Off
90MHz	60MHz	1.5x	Off	Off	On	Off	Off	Off
100MHz	66MHz	1.5x	Off	Off	Off	On	Off	Off
120MHz	60MHz	1.5x	Off	Off	On	Off	Off	Off
133MHz	66MHz	1.5x	Off	Off	Off	On	Off	Off
150MHz	60MHz	2x	On	Off	On	Off	Off	Off
166MHz	66MHz	2.5x	On	On	Off	On	Off	Off
200MHz	66MHz	3x	Off	On	Off	On	Off	Off

CPU SPEED SELECTION (AM K6)								
CPU speed	Clock speed	Multiplier	SW1/1	SW1/2	SW1/3	SW1/4	SW1/5	SW1/6
166MHz	66MHz	2.5x	On	On	Off	On	Off	Off
200MHz	66MHz	3x	Off	On	Off	On	Off	Off
233MHz	66MHz	3.5x	Off	Off	Off	On	Off	Off
266MHz	66MHz	4x	Off	Off	Off	On	Off	On

CPU SPEED SELECTION (INTEL)								
CPU speed	Clock speed	Multiplier	SW1/1	SW1/2	SW1/3	SW1/4	SW1/5	SW1/6
75MHz	50MHz	1.5x	Off	Off	On	On	Off	Off
90MHz	60MHz	1.5x	Off	Off	On	Off	Off	Off
100MHz	66MHz	1.5x	Off	Off	Off	On	Off	Off
120MHz	60MHz	2x	On	Off	On	Off	Off	Off
133MHz	66MHz	2x	On	Off	Off	On	Off	Off
150MHz	60MHz	2.5x	On	On	On	Off	Off	Off
166MHz	66MHz	2.5x	On	On	Off	On	Off	Off
180MHz	60MHz	3x	Off	On	On	Off	Off	Off
200MHz	66MHz	3x	Off	On	Off	On	Off	Off
233MHz	66MHz	3.5x	Off	Off	Off	On	Off	Off

Continued on next page. . .

SOYO COMPUTER CO., LTD.
5 V M 2 / M 5

... continued from previous page

CPU VOLTAGE SELECTION (SINGLE)		
Voltage	JP30	JP31
3.3v	Pins 1 & 2 closed	Pins 7 & 8 closed
3.52v	Pins 1 & 2 closed	Pins 9 & 10 closed

CPU VOLTAGE SELECTION (DUAL)		
Voltage	JP30	JP31
2.8v	Pins 2 & 3 closed	Pins 1 & 2 closed
2.9v	Pins 2 & 3 closed	Pins 3 & 4 closed
3.2v	Pins 1 & 2 closed	Pins 5 & 6 closed

EMI GROUND SELECTION			
Setting	EMI1	EMI2	EMI3
Enabled	Open	Open	Open
Disabled	Closed	Closed	Closed