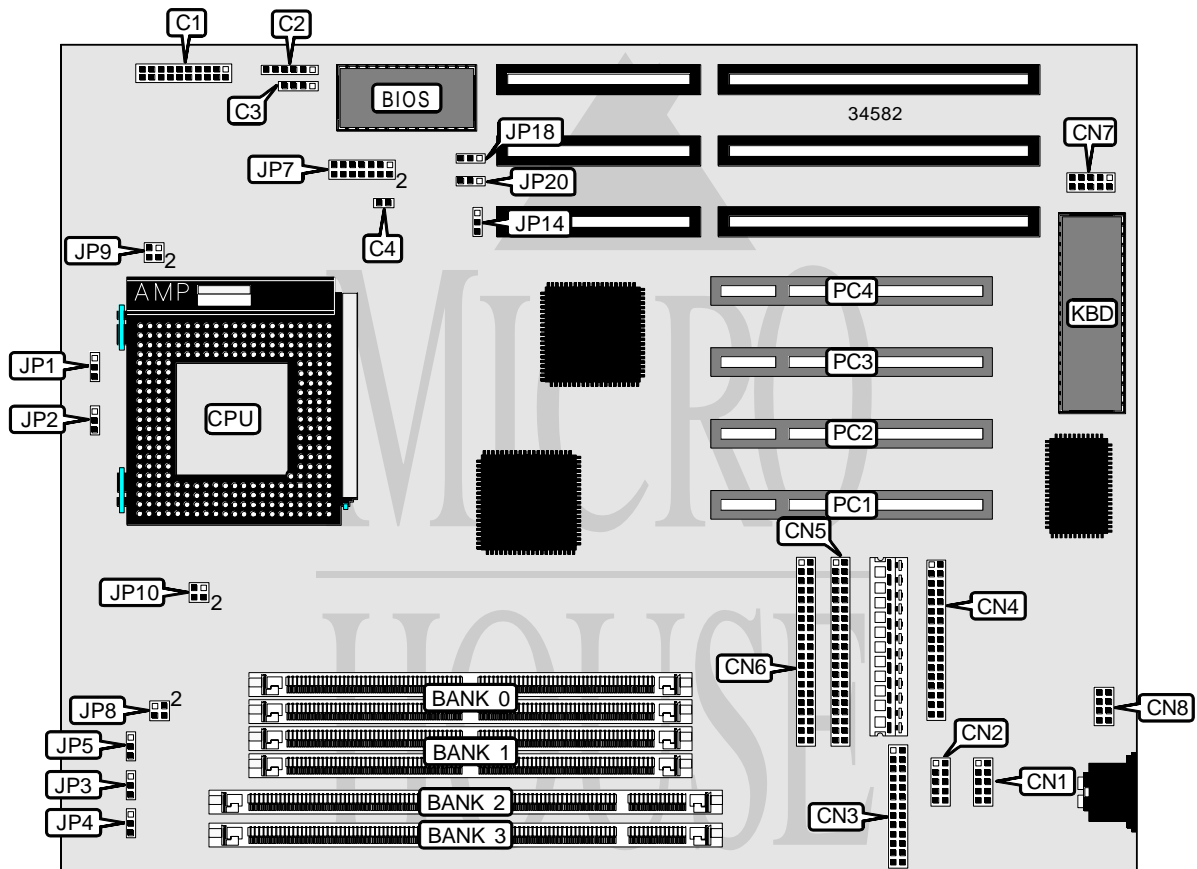


# ACER, INC. AP 5 T

<b>Processor</b>	CX 6X86/CX 6X86L/AM K5/AM K6/Pentium
<b>Processor Speed</b>	90/100/120/133/150/166/200/233MHz
<b>Chip Set</b>	Intel
<b>Video Chip Set</b>	None
<b>Maximum Onboard Memory</b>	256MB (EDO supported)
<b>Maximum Video Memory</b>	None
<b>Cache</b>	256/512KB
<b>BIOS</b>	AMI
<b>Dimensions</b>	280mm x 220mm
<b>I/O Options</b>	32-bit PCI slots (4), floppy drive interface, green PC connector, IDE interfaces (2), parallel port, PS/2 mouse interface, serial ports (2), USB connector, IR connector
<b>NPU Options</b>	None



*Continued on next page . . .*

... continued from previous page

CONNECTIONS			
Purpose	Location	Purpose	Location
Power LED & keylock	C1/pins 1 – 5	Serial port 1	CN2
Speaker	C1/pins 7 - 10	Parallel port	CN3
Green PC LED	C1/pins 12 & 13	Floppy drive interface	CN4
Green PC connector	C1/pins 15 - 17	IDE interface 1	CN5
Reset switch	C1/pins 19 & 20	IDE interface 2	CN6
IR connector	C2	USB connector	CN7
IDE interface LED	C3	PS/2 mouse interface	CN8
Chassis fan power	C4	32-bit PCI slots	PC1 – PC4
Serial port 2	CN1		

USER CONFIGURABLE SETTINGS			
Function	Label	Position	
í CMOS memory normal operation	JP14	Pins 1 & 2 closed	
CMOS memory clear	JP14	Pins 2 & 3 closed	
í On board I/O enabled	JP18	Pins 1 & 2 closed	
On board I/O disabled	JP18	Pins 2 & 3 closed	
í PS/2 mouse enabled	JP20	Pins 1 & 2 closed	
PS/2 mouse disabled	JP20	Pins 2 & 3 closed	

SIMM CONFIGURATION			
Size	Bank 0	Bank 1	
8MB	(2) 1M x 36	None	
16MB	(2) 2M x 36	None	
16MB	(2) 1M x 36	(2) 1M x 36	
24MB	(2) 2M x 36	(2) 1M x 36	
32MB	(2) 4M x 36	None	
32MB	(2) 2M x 36	(2) 2M x 36	
40MB	(2) 4M x 36	(2) 1M x 36	
48MB	(2) 4M x 36	(2) 2M x 36	
64MB	(2) 8M x 36	None	
64MB	(2) 4M x 36	(2) 4M x 36	
72MB	(2) 8M x 36	(2) 1M x 36	
80MB	(2) 8M x 36	(2) 2M x 36	
96MB	(2) 8M x 36	(2) 4M x 36	
128MB	(2) 8M x 36	(2) 8M x 36	
128MB	(2) 16M x 36	None	
136MB	(2) 16M x 36	(2) 1M x 36	
144MB	(2) 16M x 36	(2) 2M x 36	
160MB	(2) 16M x 36	(2) 4M x 36	
192MB	(2) 16M x 36	(2) 8M x 36	
256MB	(2) 16M x 36	(2) 16M x 36	

Note: Board accepts EDO memory.

Continued on next page...

... continued from previous page

DIMM CONFIGURATION		
Size	Bank 0	Bank 1
8MB	(1) 1M x 64	None
16MB	(1) 2M x 64	None
16MB	(1) 1M x 64	(1) 1M x 64
24MB	(1) 2M x 64	(1) 1M x 64
32MB	(1) 4M x 64	None
32MB	(1) 2M x 64	(1) 2M x 64
40MB	(1) 4M x 64	(1) 1M x 64
48MB	(1) 4M x 64	(1) 2M x 64
64MB	(1) 8M x 64	None
64MB	(1) 4M x 64	(1) 4M x 64
72MB	(1) 8M x 64	(1) 1M x 64
80MB	(1) 8M x 64	(1) 2M x 64
96MB	(1) 8M x 64	(1) 4M x 64
128MB	(1) 16M x 64	None
128MB	(1) 8M x 64	(1) 8M x 64
136MB	(1) 16M x 64	(1) 1M x 64
144MB	(1) 16M x 64	(1) 2M x 64
160MB	(1) 16M x 64	(1) 4M x 64
192MB	(1) 16M x 64	(1) 8M x 64
256MB	(1) 16M x 64	(1) 16M x 64

CACHE CONFIGURATION	
Size	Bank 0
256KB	(2) 32K x 32
512KB	(2) 64K x 32

Note: The location of bank 0 is unidentified.

CPU SPEED SELECTION (CX 6X86/6X 86L)							
CPU speed	Clock speed	Multiplier	JP1	JP2	JP3	JP4	JP5
150MHz	60MHz	2x	2 & 3	1 & 2	1 & 2	2 & 3	1 & 2
166MHz	66MHz	2x	2 & 3	1 & 2	2 & 3	1 & 2	1 & 2

Note: Pins designated should be in the closed position.

CPU SPEED SELECTION (AM K5)							
CPU speed	Clock speed	Multiplier	JP1	JP2	JP3	JP4	JP5
90MHz	60MHz	1.5x	1 & 2	1 & 2	1 & 2	2 & 3	1 & 2
100MHz	66MHz	1.5x	1 & 2	1 & 2	2 & 3	1 & 2	1 & 2
120MHz	60MHz	1.5x	1 & 2	1 & 2	1 & 2	2 & 3	1 & 2
133MHz	66MHz	1.5x	1 & 2	1 & 2	2 & 3	1 & 2	1 & 2
166MHz	66MHz	1.75x	2 & 3	2 & 3	2 & 3	1 & 2	1 & 2

Note: Pins designated should be in the closed position.

Continued on next page...

ACER, INC.  
AP5T

... continued from previous page

CPU SPEED SELECTION (AM K6)							
CPU speed	Clock speed	Multiplier	JP1	JP2	JP3	JP4	JP5
166MHz	66MHz	2.5x	2 & 3	2 & 3	2 & 3	1 & 2	1 & 2
200MHz	66MHz	3x	1 & 2	2 & 3	2 & 3	1 & 2	1 & 2
233MHz	66MHz	3.5x	1 & 2	1 & 2	2 & 3	1 & 2	1 & 2

Note: Pins designated should be in the closed position.

CPU SPEED SELECTION (INTEL)							
CPU speed	Clock speed	Multiplier	JP1	JP2	JP3	JP4	JP5
90MHz	60MHz	1.5x	1 & 2	1 & 2	1 & 2	2 & 3	1 & 2
100MHz	66MHz	1.5x	1 & 2	1 & 2	2 & 3	1 & 2	1 & 2
120MHz	60MHz	2x	2 & 3	1 & 2	1 & 2	2 & 3	1 & 2
133MHz	66MHz	2x	2 & 3	1 & 2	2 & 3	1 & 2	1 & 2
150MHz	60MHz	2.5x	2 & 3	2 & 3	1 & 2	2 & 3	1 & 2
166MHz	66MHz	2.5x	2 & 3	2 & 3	2 & 3	1 & 2	1 & 2
200MHz	66MHz	3x	1 & 2	2 & 3	2 & 3	1 & 2	1 & 2
233MHz	66MHz	3.5x	1 & 2	1 & 2	2 & 3	1 & 2	1 & 2

Note: Pins designated should be in the closed position. If board is AP5T-1, ignore JP5.

CPU VOLTAGE SELECTION (SINGLE)				
Voltage	JP7	JP8	JP9	JP10
3.45v	1 & 2	1 & 2	1 & 2, 3 & 4	Open

Note: Pins designated should be in the closed position.

CPU VOLTAGE SELECTION (DUAL)					
Voltage	V core	JP7	JP8	JP9	JP10
3.45v	2.8v	7 & 8	1 & 2	Open	1 & 2, 3 & 4
3.45v	2.9v	5 & 6	1 & 2	Open	1 & 2, 3 & 4
3.45v	3.2v	9 & 10	1 & 2	Open	1 & 2, 3 & 4
3.45v	3.52v	3 & 4	1 & 2	Open	1 & 2, 3 & 4

Note: Pins designated should be in the closed position.