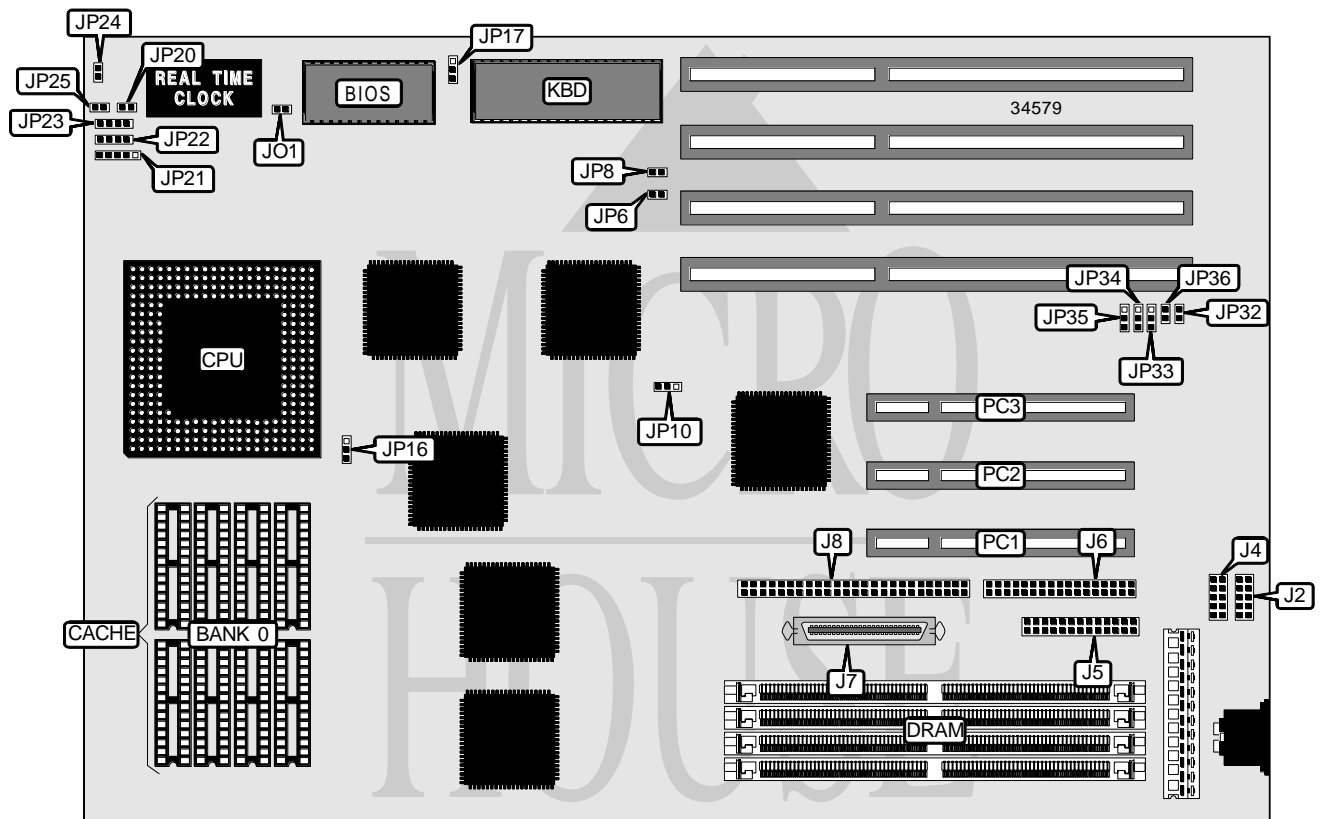



ADVANCED INTEGRATION RESEARCH, INC.

54CEP (REV. 1.2)

Processor	Pentium
Processor Speed	90/100MHz
Chip Set	Intel
Video Chip Set	None
Maximum Onboard Memory	128MB
Maximum Video Memory	None
Cache	256/512KB
BIOS	AMI
Dimensions	330mm x 218mm
I/O Options	32-bit PCI slots (3), floppy drive interface, SCSI interface, Wide SCSI interface, parallel port, serial ports (2)
NPU Options	None




 LOCATION UNIDENTIFIED

Continued on next page . . .

ADVANCED INTEGRATION RESEARCH, INC.
54CEP (REV. 1.2)

... continued from previous page

CONNECTIONS			
Purpose	Location	Purpose	Location
Serial port 1	J2	Power LED & keylock	JP21
Serial port 2	J4	Hard drive interface LED	JP22
Parallel port	J5	Speaker	JP23
Floppy drive interface	J6	Turbo switch	JP24
Wide SCSI interface	J7	Turbo LED	JP25
SCSI interface	J8	32-bit PCI slots	PC1 – PC3
Reset switch	JP20		

USER CONFIGURABLE SETTINGS		
Function	Label	Position
í Factory configured - do not alter (8-bit/16-bit Fast-Wide SCSI)	JP5	Closed
í Monitor type select color	JP6	Open
Monitor type select monochrome	JP6	Closed
í CMOS memory normal operation	JP8	Open
CMOS memory clear	JP8	Closed
í Parallel port IRQ select IRQ7	JP10	Pins 1 & 2 closed
Parallel port IRQ select IRQ5	JP10	Pins 2 & 3 closed
í Flash BIOS normal operation	JP17	Pins 2 & 3 closed
Flash BIOS programming mode	JP17	Pins 1 & 2 closed

SIMM CONFIGURATION		
Size	Bank 0	Bank 1
2MB	(2) 256K x 36	None
4MB	(2) 512K x 36	None
4MB	(2) 256K x 36	(2) 256K x 36
6MB	(2) 512K x 36	(2) 256K x 36
8MB	(2) 1M x 36	None
8MB	(2) 512K x 36	(2) 512K x 36
10MB	(2) 1M x 36	(2) 256K x 36
12MB	(2) 1M x 36	(2) 512K x 36
16MB	(2) 2M x 36	None
16MB	(2) 1M x 36	(2) 1M x 36
18MB	(2) 2M x 36	(2) 256K x 36
20MB	(2) 2M x 36	(2) 512K x 36
24MB	(2) 2M x 36	(2) 1M x 36
32MB	(2) 4M x 36	None
32MB	(2) 2M x 36	(2) 2M x 36
34MB	(2) 4M x 36	(2) 256K x 36
36MB	(2) 4M x 36	(2) 512K x 36
40MB	(2) 4M x 36	(2) 1M x 36
48MB	(2) 4M x 36	(2) 2M x 36

Continued on next page. . .

ADVANCED INTEGRATION RESEARCH, INC.
54CEP (REV. 1.2)

... continued from previous page

SIMM CONFIGURATION (CON'T)		
Size	Bank 0	Bank 1
64MB	(2) 8M x 36	None
64MB	(2) 4M x 36	(2) 4M x 36
66MB	(2) 8M x 36	(2) 256K x 36
68MB	(2) 8M x 36	(2) 512K x 36
72MB	(2) 8M x 36	(2) 1M x 36
80MB	(2) 8M x 36	(2) 2M x 36
96MB	(2) 8M x 36	(2) 4M x 36
128MB	(2) 8M x 36	(2) 8M x 36

CACHE CONFIGURATION	
Size	Bank 0
256KB	(8) 32K x 8
512KB	(8) 64K x 8

CACHE JUMPER CONFIGURATION	
Size	JP16
256KB	Pins 1 & 2 closed
512KB	Pins 2 & 3 closed

CPU SPEED SELECTION	
Speed	JO1
90MHz	Open
100MHz	Closed

DMA CHANNEL SELECTION			
Channel	JP34	JP35	JP36
í Normal	Open	Open	Open
1	Pins 1 & 2 closed	Pins 1 & 2 closed	Closed
3	Pins 2 & 3 closed	Pins 2 & 3 closed	Closed

FLOPPY DRIVE SELECTION		
Setting	JP32	JP33
í Normal	Open	Open
Enhanced	Closed	Pins 2 & 3 closed