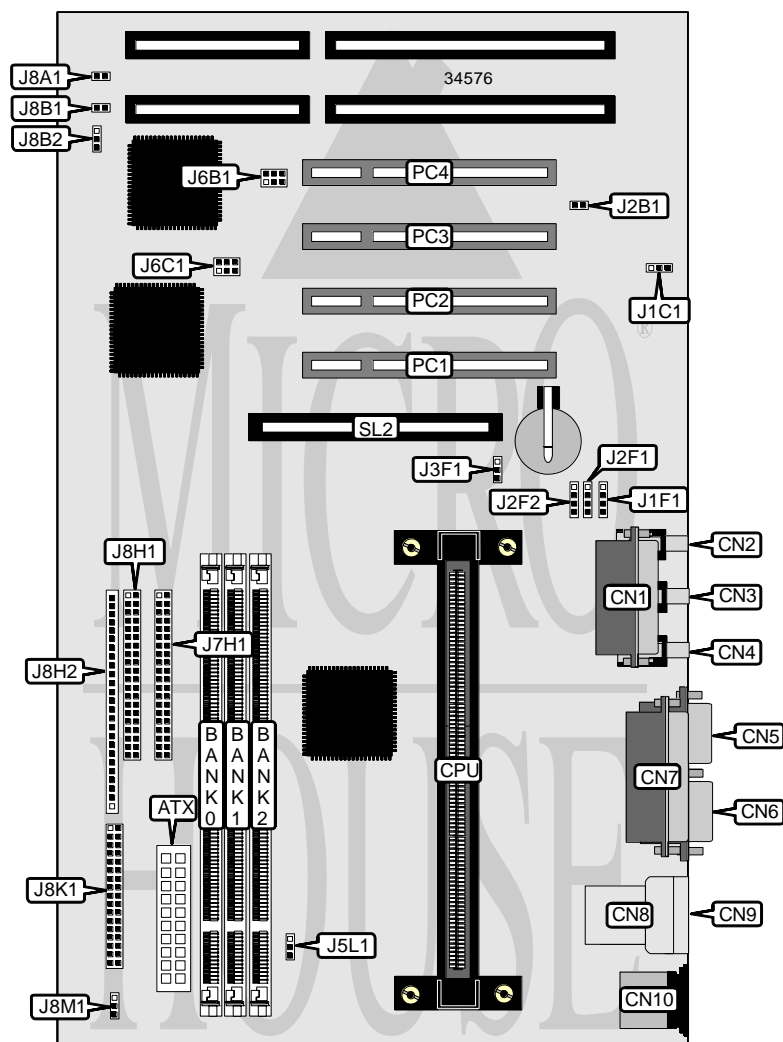


INTEL CORPORATION

AL440LX

Processor	Pentium II
Processor Speed	Unidentified
Chip Set	Intel
Video Chip Set	None
Maximum Onboard Memory	384MB
Maximum Video Memory	None
Cache	512KB
BIOS	Intel/Phoenix
Dimensions	305mm x 244mm
I/O Options	32-bit PCI slots (4), floppy drive interface, game/MIDI port, green PC connector, IDE interfaces (2), parallel port, PS/2 mouse port, serial ports (2), IR connector, USB connectors (2), ATX power connector, AGP slot, line in (2), line out, microphone in
NPU Options	None



Continued on next page. . .

INTEL CORPORATION

AL440LX

... continued from previous page

CONNECTIONS			
Purpose	Location	Purpose	Location
ATX power connector	ATX	Yamaha wavetable connector	J6B1
Game/MIDI port	CN1	Yamaha wavetable connector	J6C1
Microphone in	CN2	IDE interface 2	J7H1
Line in - external	CN3	Wake on ring connector	J8A1
Line out	CN4	SCSI interface LED	J8B1
Serial port 2	CN5	IDE interface 1	J8H1
Serial port 1	CN6	Soft off power supply	J8H2/pins 1 & 2
Parallel port	CN7	Green PC connector	J8H2/pins 3 & 4
USB connector 2	CN8	IR connector	J8H2/pins 6 - 11
USB connector 1	CN9	IDE interface LED	J8H2/pins 13 - 16
PS/2 mouse port	CN10	Power LED	J8H2/pins 18 - 20
Wake on LAN connector	J1C1	Reset	J8H2/pins 22 & 23
Audio in - CD-ROM	J1F1	Speaker	J8H2/pins 24 - 27
Chassis security	J2B1	Floppy drive interface	J8K1
Telephony connector	J2F1	Chassis fan power	J8M1
Line in - internal	J2F2	32-bit PCI slots	PC1 – PC4
Chassis fan power	J3F1	AGP slot	SL2
Chassis fan power	J5L1		

USER CONFIGURABLE SETTINGS		
Function	Label	Position
BIOS normal operation	J8B2	Pins 1 & 2 closed
BIOS configuration mode	J8B2	Pins 2 & 3 closed

DIMM CONFIGURATION			
Size	Bank 0	Bank 1	Bank 2
8MB	(1) 1M x 64	None	None
16MB	(1) 2M x 64	None	None
16MB	(1) 1M x 64	(1) 1M x 64	None
24MB	(1) 2M x 64	(1) 1M x 64	None
24MB	(1) 1M x 64	(1) 1M x 64	(1) 1M x 64
32MB	(1) 4M x 64	None	None
32MB	(1) 2M x 64	(1) 2M x 64	None
40MB	(1) 4M x 64	(1) 1M x 64	None
48MB	(1) 4M x 64	(1) 2M x 64	None
48MB	(1) 2M x 64	(1) 2M x 64	(1) 2M x 64
64MB	(1) 8M x 64	None	None
64MB	(1) 4M x 64	(1) 4M x 64	None
72MB	(1) 8M x 64	(1) 1M x 64	None
80MB	(1) 8M x 64	(1) 2M x 64	None
96MB	(1) 8M x 64	(1) 4M x 64	None
96MB	(1) 4M x 64	(1) 4M x 64	(1) 4M x 64

Continued on next page...

INTEL CORPORATION
AL440LX

... continued from previous page

DIMM CONFIGURATION (CON'T)			
Size	Bank 0	Bank 1	Bank 2
128MB	(1) 8M x 64	(1) 8M x 64	None
128MB	(1) 16M x 64	None	None
192MB	(1) 8M x 64	(1) 8M x 64	(1) 8M x 64
256MB	(1) 16M x 64	(1) 16M x 64	None
384MB	(1) 16M x 64	(1) 16M x 64	(1) 16M x 64

CACHE CONFIGURATION
Note: 512KB cache is located on the Pentium II CPU.