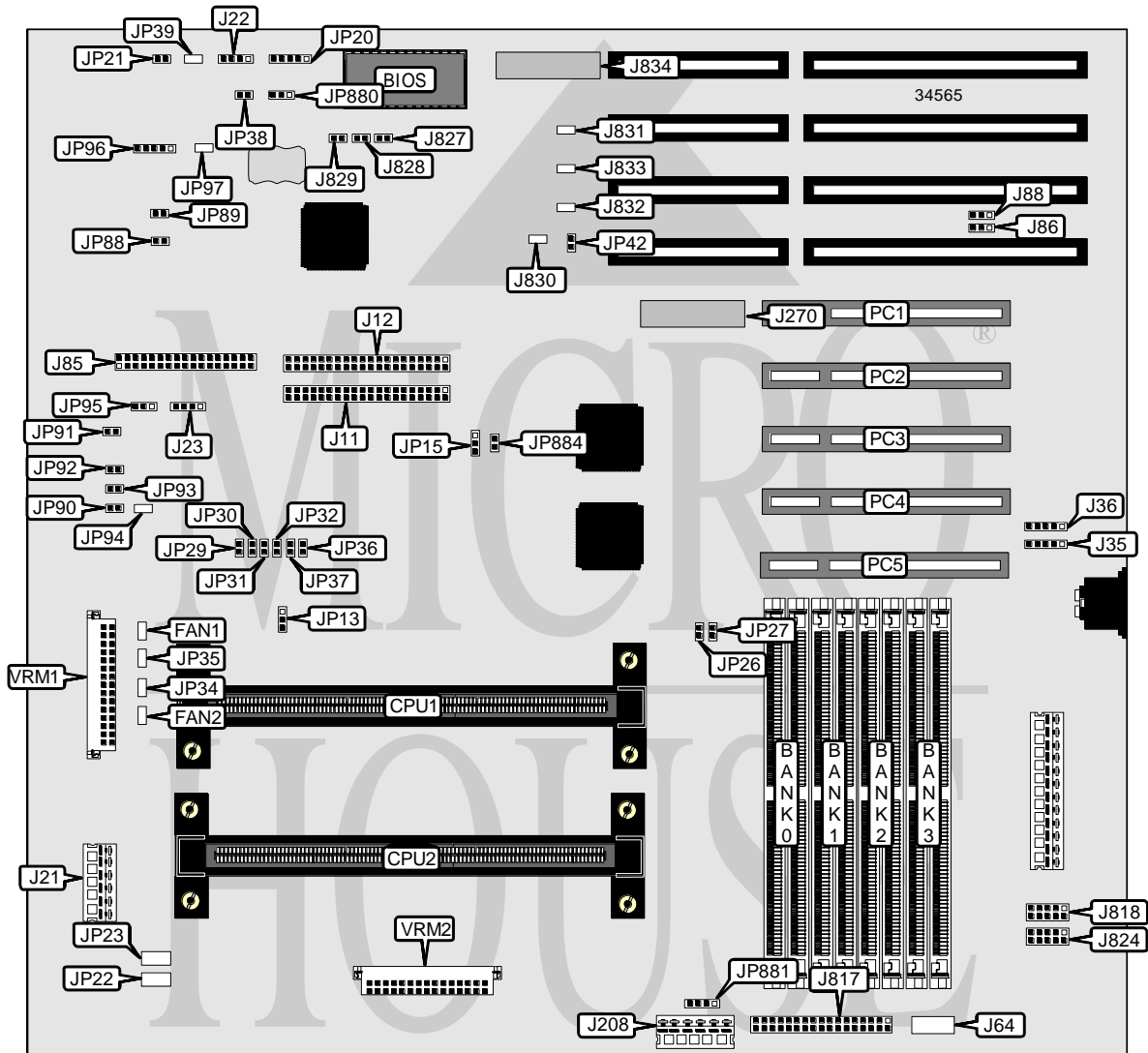


# SUPER MICRO P 6 D K F

<b>Processor</b>	Pentium II
<b>Processor Speed</b>	233/266/300/333/366/400MHz
<b>Chip Set</b>	Intel
<b>Video Chip Set</b>	None
<b>Maximum Onboard Memory</b>	1GB (EDO supported)
<b>Maximum Video Memory</b>	None
<b>Cache</b>	256/512KB (located on Pentium II CPU)
<b>BIOS</b>	AMI
<b>Dimensions</b>	355mm x 304mm
<b>I/O Options</b>	32-bit PCI slots (5), floppy drive interface, IDE interfaces (2), parallel port, PS/2 mouse port, serial ports (2), IR connector, USB connectors (2), ATX power connector
<b>NPU Options</b>	None



Continued on next page . . .

# SUPER MICRO P6DKF

... continued from previous page

CONNECTIONS			
Purpose	Location	Purpose	Location
Chassis fan power	FAN1	Serial port 2	J824
Chassis fan power	FAN2	Power LED & keylock	JP20
IDE interface 1	J11	Reset switch	JP21
IDE interface 2	J12	Green PC connector	JP39
3.3v power	J21	Fan replacement buzzer	JP89
Speaker	J22	Overheat LED	JP90
IDE interface LED	J23	Backup cooling fan power	JP91
USB connector 1	J35	Backup cooling fan power	JP92
USB connector 2	J36	Backup cooling fan power	JP93
PS/2 mouse interface	J64	IR connector	JP96
Floppy drive interface	J85	External battery	JP881
5v power	J208	32-bit PCI slots	PC1 – PC5
Parallel port	J817	VRM connector	VRM1
Serial port 1	J818	VRM connector	VRM2

USER CONFIGURABLE SETTINGS		
Function	Label	Position
í Factory configured - do not alter	J86	Pins 1 & 2 closed
í Factory configured - do not alter	J88	Pins 1 & 2 closed
í Factory configured - do not alter	J270	Unidentified
í Factory configured - do not alter	J827	Closed
í Factory configured - do not alter	J828	Closed
í Factory configured - do not alter	J829	Closed
í Factory configured - do not alter	J830	Unidentified
í Factory configured - do not alter	J831	Unidentified
í Factory configured - do not alter	J832	Unidentified
í Factory configured - do not alter	J833	Unidentified
í Factory configured - do not alter	J834	Unidentified
í Factory configured - do not alter	JP13	Pins 2 & 3 closed
í Factory configured - do not alter	JP15	Pins 2 & 3 closed
í Factory configured - do not alter	JP22	Unidentified
í Factory configured - do not alter	JP23	Unidentified
í Factory configured - do not alter	JP26	Open
í Factory configured - do not alter	JP27	Closed
í Factory configured - do not alter	JP35	Unidentified
í Factory configured - do not alter	JP38	Open
í ISA CLK = PCI CLK/4	JP42	Closed
ISA CLK = PCI CLK/3	JP42	Open
í Buzzer control select standby	JP88	Closed
Buzzer control select disabled	JP88	Open
í Factory configured - do not alter	JP94	Unidentified

Continued on next page...

# SUPER MICRO P6DKF

... continued from previous page

USER CONFIGURABLE SETTINGS (CON'T)		
Function	Label	Position
í Factory configured - do not alter	JP97	Unidentified
í CMOS memory normal operation	JP880	Pins 1 & 2 closed
CMOS memory clear	JP880	Pins 2 & 3 closed
í Factory configured - do not alter	JP884	Open

SIMM CONFIGURATION				
Size	Bank 0	Bank 1	Bank 2	Bank 3
8MB	(2) 1M x 36	None	None	None
16MB	(2) 2M x 36	None	None	None
16MB	(2) 1M x 36	(2) 1M x 36	None	None
24MB	(2) 2M x 36	(2) 1M x 36	None	None
24MB	(2) 1M x 36	(2) 1M x 36	(2) 1M x 36	None
32MB	(2) 4M x 36	None	None	None
32MB	(2) 2M x 36	(2) 2M x 36	None	None
32MB	(2) 1M x 36	(2) 1M x 36	(2) 1M x 36	(2) 1M x 36
40MB	(2) 4M x 36	(2) 1M x 36	None	None
48MB	(2) 4M x 36	(2) 2M x 36	None	None
48MB	(2) 2M x 36	(2) 2M x 36	(2) 2M x 36	None
64MB	(2) 8M x 36	None	None	None
64MB	(2) 4M x 36	(2) 4M x 36	None	None
64MB	(2) 2M x 36	(2) 2M x 36	(2) 2M x 36	(2) 2M x 36
72MB	(2) 8M x 36	(2) 1M x 36	None	None
80MB	(2) 8M x 36	(2) 2M x 36	None	None
96MB	(2) 8M x 36	(2) 4M x 36	None	None
96MB	(2) 4M x 36	(2) 4M x 36	(2) 4M x 36	None
128MB	(2) 8M x 36	(2) 8M x 36	None	None
128MB	(2) 16M x 36	None	None	None
128MB	(2) 4M x 36	(2) 4M x 36	(2) 4M x 36	(2) 4M x 36
136MB	(2) 16M x 36	(2) 1M x 36	None	None
144MB	(2) 16M x 36	(2) 2M x 36	None	None
160MB	(2) 16M x 36	(2) 4M x 36	None	None
192MB	(2) 16M x 36	(2) 8M x 36	None	None
192MB	(2) 8M x 36	(2) 8M x 36	(2) 8M x 36	None
256MB	(2) 16M x 36	(2) 16M x 36	None	None
256MB	(2) 32M x 36	None	None	None
256MB	(2) 8M x 36	(2) 8M x 36	(2) 8M x 36	(2) 8M x 36
264MB	(2) 32M x 36	(2) 1M x 36	None	None
272MB	(2) 32M x 36	(2) 2M x 36	None	None
288MB	(2) 32M x 36	(2) 4M x 36	None	None
320MB	(2) 32M x 36	(2) 8M x 36	None	None

Continued on next page...

SUPER MICRO  
P6DKF

... continued from previous page

SIMM CONFIGURATION (CON'T)				
Size	Bank 0	Bank 1	Bank 2	Bank 3
384MB	(2) 32M x 36	(2) 16M x 36	None	None
384MB	(2) 16M x 36	(2) 16M x 36	(2) 16M x 36	None
512MB	(2) 32M x 36	(2) 32M x 36	None	None
512MB	(2) 16M x 36	(2) 16M x 36	(2) 16M x 36	(2) 16M x 36
768MB	(2) 32M x 36	(2) 32M x 36	(2) 32M x 36	None
1GB	(2) 32M x 36	(2) 32M x 36	(2) 32M x 36	(2) 32M x 36

Note: Board accepts EDO memory.

CACHE CONFIGURATION
Note: 256KB/512KB cache is located on the Pentium II CPU.

CPU SPEED SELECTION						
CPU speed	JP29	JP30	JP31	JP32	JP36	JP37
233MHz	Open	Open	Closed	Closed	Open	Closed
266MHz	Closed	Closed	Open	Closed	Open	Closed
300MHz	Open	Closed	Open	Closed	Open	Closed
333MHz	Closed	Open	Open	Closed	Open	Closed
366MHz	Open	Open	Open	Closed	Open	Closed
400MHz	Closed	Closed	Closed	Open	Open	Closed

THERMAL CONTROL SELECTION	
Temperature	JP95
41C	Pins 1 & 2 closed
46C	Pins 2 & 3 closed

Note: Depending on temperature selected, a backup fan or alarm will sound, letting user know the system is overheating.