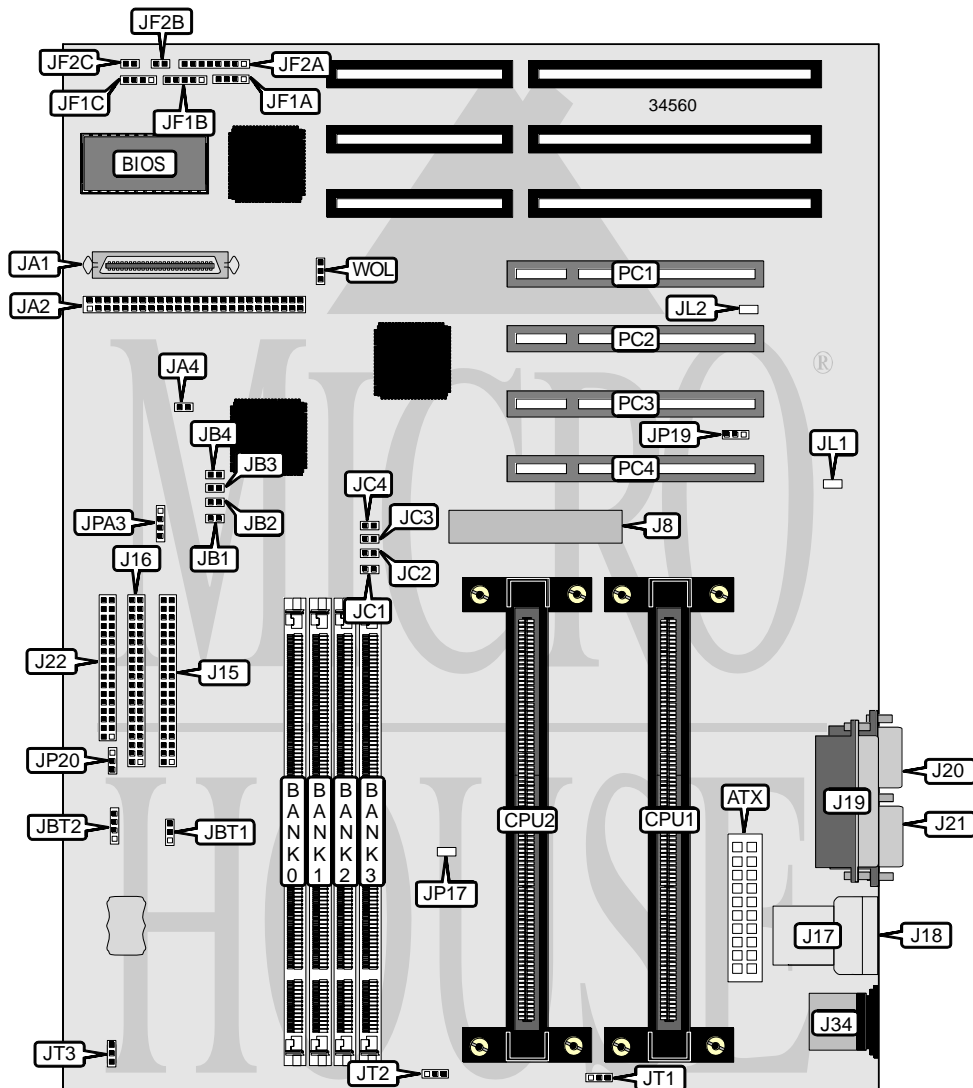


# SUPER MICRO P6DLS, P6SLS

<b>Processor</b>	Pentium II
<b>Processor Speed</b>	200/233/266/300/333/366/400MHz
<b>Chip Set</b>	Intel
<b>Video Chip Set</b>	None
<b>Maximum Onboard Memory</b>	1GB (EDO supported)
<b>Maximum Video Memory</b>	None
<b>Cache</b>	256/512KB (located on Pentium II CPU)
<b>BIOS</b>	AMI
<b>Dimensions</b>	305mm x 244mm
<b>I/O Options</b>	32-bit PCI slots (4), floppy drive interface, IDE interfaces (2), Ultra Wide SCSI interface, Ultra SCSI interface, parallel port, PS/2 mouse port, serial ports (2), IR connector, USB connectors (2), ATX power connector, AGP slot
<b>NPU Options</b>	None



Continued on next page . . .

# SUPER MICRO P6DLS, P6SLS

... continued from previous page

CONNECTIONS			
Purpose	Location	Purpose	Location
ATX power connector	ATX	IDE interface LED	JF1A
AGP slot	J8	Power LED & keylock	JF1B
IDE interface 1	J15	Speaker	JF1C
IDE interface 2	J16	IR connector	JF2A
USB connector	J17	Soft off power supply	JF2B
USB connector	J18	Reset switch	JF2C
Parallel port	J19	Chassis intrusion connector	JL1
Serial port 1	J20	SCSI interface LED	JPA3
Serial port 2	J21	CPU fan	JT1
Floppy drive interface	J22	CPU fan	JT2
PS/2 mouse port	J34	Thermal control fan	JT3
Ultra Wide SCSI interface	JA1	32-bit PCI slots	PC1 – PC4
Ultra SCSI interface	JA2	Wake on LAN connector	WOL
External battery	JBT2		

USER CONFIGURABLE SETTINGS		
Function	Label	Position
í Factory configured - do not alter	JA4	Unidentified
í CMOS memory normal operation	JBT1	Pins 1 & 2 closed
CMOS memory clear	JBT1	Pins 2 & 3 closed
í Factory configured - do not alter	JC4	Open
í Factory configured - do not alter	JL2	Open
í Factory configured - do not alter	JP17	Pins 2 & 3 closed
í SMI select APIC SMI	JP19	Pins 1 & 2 closed
SMI select PIIX4 SMI	JP19	Pins 2 & 3 closed
í Power on/off select save PD state	JP20	Pins 2 & 3 closed
Power on/off select PIIX4	JP20	Pins 1 & 2 closed

DIMM CONFIGURATION				
Size	Bank 0	Bank 1	Bank 2	Bank 3
8MB	(1) 1M x 64	None	None	None
16MB	(1) 2M x 64	None	None	None
16MB	(1) 1M x 64	(1) 1M x 64	None	None
24MB	(1) 2M x 64	(1) 1M x 64	None	None
24MB	(1) 1M x 64	(1) 1M x 64	(1) 1M x 64	None
32MB	(1) 4M x 64	None	None	None
32MB	(1) 2M x 64	(1) 2M x 64	None	None
32MB	(1) 1M x 64	(1) 1M x 64	(1) 1M x 64	(1) 1M x 64
40MB	(1) 4M x 64	(1) 1M x 64	None	None
48MB	(1) 4M x 64	(1) 2M x 64	None	None

Continued on next page. . .

# SUPER MICRO P6DLS, P6SLS

... continued from previous page

DIMM CONFIGURATION (CON'T)				
Size	Bank 0	Bank 1	Bank 2	Bank 3
48MB	(1) 2M x 64	(1) 2M x 64	(1) 2M x 64	None
64MB	(1) 8M x 64	None	None	None
64MB	(1) 4M x 64	(1) 4M x 64	None	None
64MB	(1) 2M x 64	(1) 2M x 64	(1) 2M x 64	(1) 2M x 64
72MB	(1) 8M x 64	(1) 1M x 64	None	None
80MB	(1) 8M x 64	(1) 2M x 64	None	None
96MB	(1) 8M x 64	(1) 4M x 64	None	None
96MB	(1) 4M x 64	(1) 4M x 64	(1) 4M x 64	None
128MB	(1) 8M x 64	(1) 8M x 64	None	None
128MB	(1) 4M x 64	(1) 4M x 64	(1) 4M x 64	(1) 4M x 64
128MB	(1) 16M x 64	None	None	None
256MB	(1) 8M x 64	(1) 8M x 64	(1) 8M x 64	(1) 8M x 64
256MB	(1) 16M x 64	(1) 16M x 64	None	None
384MB	(1) 16M x 64	(1) 16M x 64	(1) 16M x 64	None
1024MB	(1) 16M x 64	(1) 16M x 64	(1) 16M x 64	(1) 16M x 64

Note: Board accepts EDO memory.

CACHE CONFIGURATION
Note: 256KB/512KB cache is located on the Pentium II CPU.

CPU SPEED SELECTION							
Speed	JB1	JB2	JB3	JB4	JC1	JC2	JC3
200MHz	Closed	Open	Closed	Closed	Open	Open	Open
233MHz	Open	Open	Closed	Closed	Open	Open	Open
266MHz	Closed	Closed	Open	Closed	Open	Open	Open
300MHz	Open	Closed	Open	Closed	Open	Open	Open
333MHz	Closed	Open	Open	Closed	Open	Open	Open
366MHz	Open	Open	Open	Closed	Open	Open	Open
400MHz	Closed	Closed	Closed	Open	Open	Open	Open

MISCELLANEOUS TECHNICAL NOTE
The CPU fan will automatically turn on when the CPU temperature exceeds the user defined temperature.