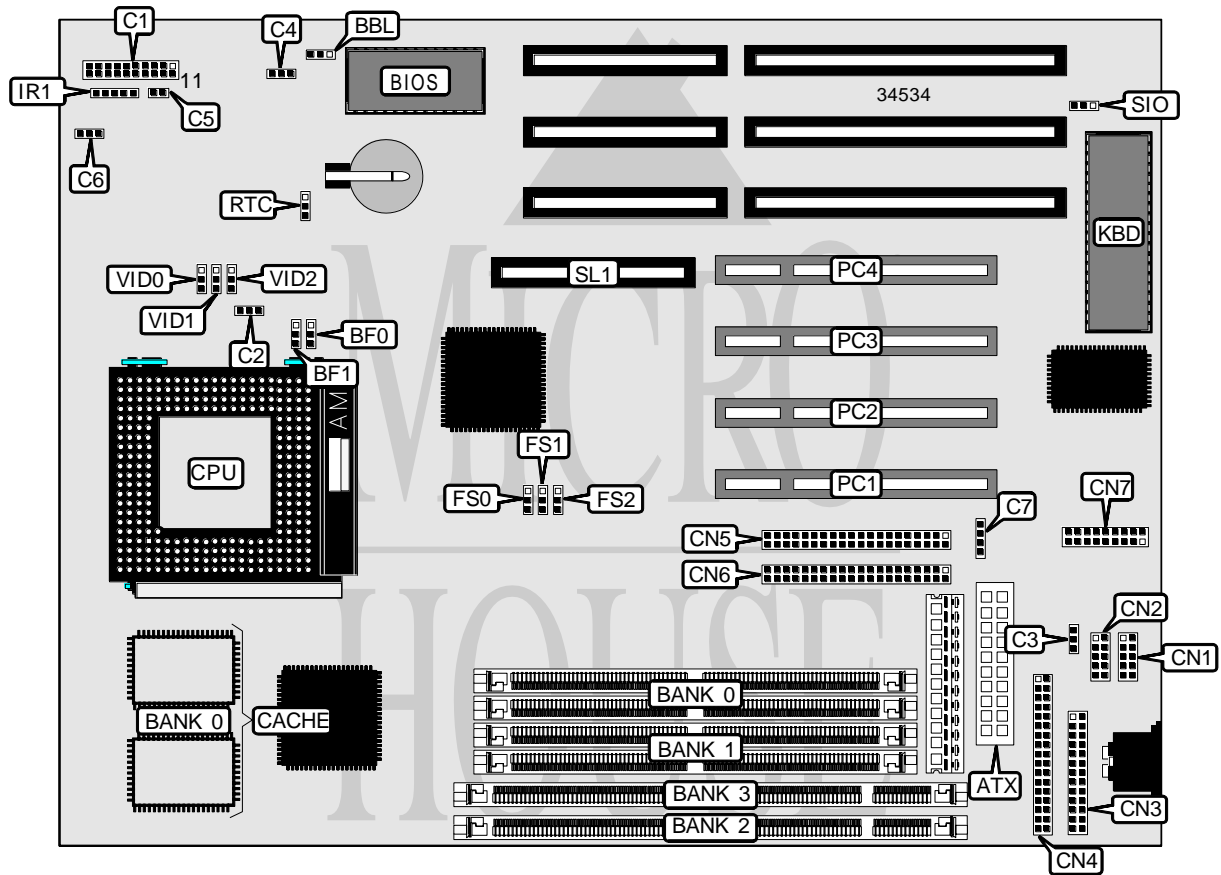


# ASUS COMPUTER INTERNATIONAL

## TX97-E

<b>Processor</b>	CX 6X86/AM K5/AM K6/Pentium
<b>Processor Speed</b>	75/90/100/120/133/150/166/200/233MHz
<b>Chip Set</b>	Intel
<b>Video Chip Set</b>	None
<b>Maximum Onboard Memory</b>	256MB (EDO supported)
<b>Maximum Video Memory</b>	None
<b>Cache</b>	256/512KB
<b>BIOS</b>	Unidentified
<b>Dimensions</b>	254mm x 218mm
<b>I/O Options</b>	32-bit PCI slots (4), floppy drive interface, green PC connector, IDE interfaces (2), parallel port, PS/2 mouse interface, serial ports (2), IR connector, USB connector, ATX power connector, RAID slot
<b>NPU Options</b>	None



Continued on next page. . .

ASUS COMPUTER INTERNATIONAL  
TX97 - E

... continued from previous page

CONNECTIONS			
Purpose	Location	Purpose	Location
ATX power connector	ATX	Soft off power supply	C7
Turbo LED	C1/pins 2 & 3	Serial port 1	CN1
Green PC connector	C1/pins 4 & 5	Serial port 2	CN2
Reset switch	C1/pins 9 & 10	Parallel port	CN3
Power LED & keylock	C1/pins 11 – 15	Floppy drive interface	CN4
Speaker	C1/pins 17 - 20	IDE interface 1	CN5
CPU fan power	C2	IDE interface 2	CN6
Chassis fan power	C3	PS/2 mouse, USB, IR connector	CN7
Chassis alarm	C4	IR connector	IR1
IDE interface LED	C5	32-bit PCI slots	PC1 – PC4
Chassis fan power	C6	RAID slot	SL1

USER CONFIGURABLE SETTINGS		
Function	Label	Position
í Flash BIOS programming disabled	BBL	Pins 1 & 2 closed
Flash BIOS programming enabled	BBL	Pins 2 & 3 closed
í CMOS memory normal operation	RTC	Pins 2 & 3 closed
CMOS memory clear	RTC	Pins 1 & 2 closed
í On board I/O enabled	SIO	Pins 1 & 2 closed
On board I/O disabled	SIO	Pins 2 & 3 closed

SIMM CONFIGURATION		
Size	Bank 0	Bank 1
8MB	(2) 1M x 36	None
16MB	(2) 2M x 36	None
16MB	(2) 1M x 36	(2) 1M x 36
24MB	(2) 2M x 36	(2) 1M x 36
32MB	(2) 4M x 36	None
32MB	(2) 2M x 36	(2) 2M x 36
40MB	(2) 4M x 36	(2) 1M x 36
48MB	(2) 4M x 36	(2) 2M x 36
64MB	(2) 8M x 36	None
64MB	(2) 4M x 36	(2) 4M x 36
72MB	(2) 8M x 36	(2) 1M x 36
80MB	(2) 8M x 36	(2) 2M x 36
96MB	(2) 8M x 36	(2) 4M x 36
128MB	(2) 8M x 36	(2) 8M x 36
128MB	(2) 16M x 36	None
136MB	(2) 16M x 36	(2) 1M x 36
144MB	(2) 16M x 36	(2) 2M x 36
160MB	(2) 16M x 36	(2) 4M x 36
192MB	(2) 16M x 36	(2) 8M x 36
256MB	(2) 16M x 36	(2) 16M x 36

Note: Board accepts EDO memory. Do not install SIMMS & DIMMs at the same time.

*Continued on next page. . .*

ASUS COMPUTER INTERNATIONAL  
TX97-E

... continued from previous page

DIMM CONFIGURATION		
Size	Bank 0	Bank 1
8MB	(1) 1M x 64	None
16MB	(1) 2M x 64	None
16MB	(1) 1M x 64	(1) 1M x 64
24MB	(1) 2M x 64	(1) 1M x 64
32MB	(1) 4M x 64	None
32MB	(1) 2M x 64	(1) 2M x 64
40MB	(1) 4M x 64	(1) 1M x 64
48MB	(1) 4M x 64	(1) 2M x 64
64MB	(1) 8M x 64	None
64MB	(1) 4M x 64	(1) 4M x 64
72MB	(1) 8M x 64	(1) 1M x 64
80MB	(1) 8M x 64	(1) 2M x 64
96MB	(1) 8M x 64	(1) 4M x 64
128MB	(1) 16M x 64	None
128MB	(1) 8M x 64	(1) 8M x 64
136MB	(1) 16M x 64	(1) 1M x 64
144MB	(1) 16M x 64	(1) 2M x 64
160MB	(1) 16M x 64	(1) 4M x 64
192MB	(1) 16M x 64	(1) 8M x 64
256MB	(1) 16M x 64	(1) 16M x 64

CACHE CONFIGURATION	
Size	Bank 0
256KB	(2) 32K x 32
512KB	(2) 64K x 32

CPU SPEED SELECTION (CYRIX)							
CPU speed	Clock speed	Multiplier	BF0	BF1	FS0	FS1	FS2
166MHz	66MHz	2x	2 & 3	1 & 2	1 & 2	2 & 3	2 & 3

Note: Pins designated should be in the closed position.

CPU SPEED SELECTION (AM K5)							
CPU speed	Clock speed	Multiplier	BF0	BF1	FS0	FS1	FS2
75MHz	50MHz	1.5x	1 & 2	1 & 2	2 & 3	1 & 2	2 & 3
90MHz	60MHz	1.5x	1 & 2	1 & 2	2 & 3	2 & 3	2 & 3
100MHz	66MHz	1.5x	1 & 2	1 & 2	1 & 2	2 & 3	2 & 3
120MHz	60MHz	1.5x	1 & 2	1 & 2	2 & 3	2 & 3	2 & 3
133MHz	66MHz	1.5x	1 & 2	1 & 2	1 & 2	2 & 3	2 & 3

Note: Pins designated should be in the closed position.

Continued on next page...

# ASUS COMPUTER INTERNATIONAL

## TX97-E

... continued from previous page

CPU SPEED SELECTION (AM K6)							
CPU speed	Clock speed	Multiplier	BF0	BF1	FS0	FS1	FS2
166MHz	66MHz	2.5x	2 & 3	2 & 3	1 & 2	2 & 3	2 & 3
200MHz	66MHz	3x	1 & 2	2 & 3	1 & 2	2 & 3	2 & 3
233MHz	66MHz	3.5x	1 & 2	1 & 2	1 & 2	2 & 3	2 & 3

Note: Pins designated should be in the closed position.

CPU SPEED SELECTION (INTEL)							
CPU speed	Clock speed	Multiplier	BF0	BF1	FS0	FS1	FS2
75MHz	50MHz	1.5x	1 & 2	1 & 2	2 & 3	1 & 2	2 & 3
90MHz	60MHz	1.5x	1 & 2	1 & 2	2 & 3	2 & 3	2 & 3
100MHz	66MHz	1.5x	1 & 2	1 & 2	1 & 2	2 & 3	2 & 3
120MHz	60MHz	2x	2 & 3	1 & 2	2 & 3	2 & 3	2 & 3
133MHz	66MHz	2x	2 & 3	1 & 2	1 & 2	2 & 3	2 & 3
150MHz	60MHz	2.5x	2 & 3	2 & 3	2 & 3	2 & 3	2 & 3
166MHz	66MHz	2.5x	2 & 3	2 & 3	1 & 2	2 & 3	2 & 3
200MHz	66MHz	3x	1 & 2	2 & 3	1 & 2	2 & 3	2 & 3

Note: Pins designated should be in the closed position.

CPU VOLTAGE SELECTION (SINGLE)		
Voltage	VID0	VID2
3.4v	Pins 2 & 3 closed	Pins 2 & 3 closed
3.5v	Pins 1 & 2 closed	Pins 2 & 3 closed

CPU VOLTAGE SELECTION (DUAL)			
Voltage	VID0	VID1	VID2
2.8v	Pins 2 & 3 closed	Pins 2 & 3 closed	Pins 2 & 3 closed
2.9v	Pins 1 & 2 closed	Pins 2 & 3 closed	Pins 2 & 3 closed
3.2v	Pins 2 & 3 closed	Pins 2 & 3 closed	Pins 1 & 2 closed